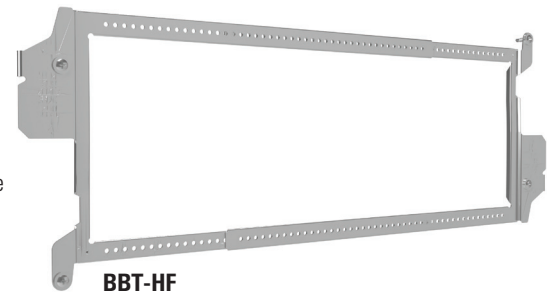


Telescoping bracket and box mounting brackets

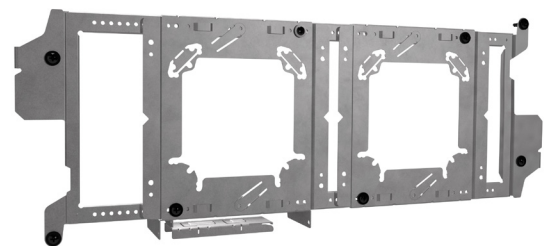
Hands-free telescoping brackets

With an auto-height adjustment, the rigid BBT-HF telescoping bracket is quick and easy to install. Simply slide the bracket to the width required and snap both ends of the bracket to the stud and secure with screws.

- Easily adjust to accommodate stud widths of 14½" through 25"; a secure fit at all stud spacings
- Available in BBT-16 for 9¼" thru 16½" stud spacings
- Bracket includes an auto-height adjustment feature
- Self-leveling when snapped onto stud; no need for additional leveling tools
- Easy to identify center line on both sides of the bracket
- Snap on feature works on 1¼" through 1⅜" inch width studs
- For studs wider than 1⅜" utilize the BBT-WF
- Designed to mount boxes at the exact height on either side of the stud without overlap of adjacent brackets
- Continuous hole pattern allows for positioning of the box mounting bracket anywhere along the length of the bracket
- BBT-WF UL listed for ceiling luminaire installation on 16" spans
- Listed for U.S. and Canada; CSA certified



BBT-HF



Telescoping bracket with BBA-4 and BBA added

Catalog #	Description	Stud spacing	Box qty.
BBT-HF	"Hands free" telescoping bracket for standard width studs (1-3/8" or less)	14½" - 25"	25
BBT-WF	Telescoping bracket for universal stud types & ceiling installation	14½" - 25"	25
BBT-16	Telescoping bracket for smaller spaces	9¼" - 16½"	25

Patent pending (all parts)

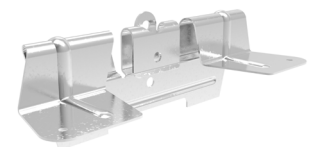
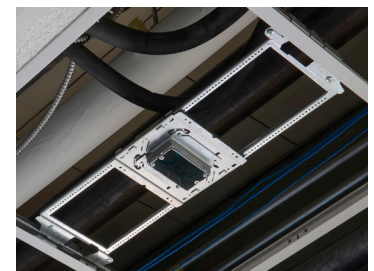
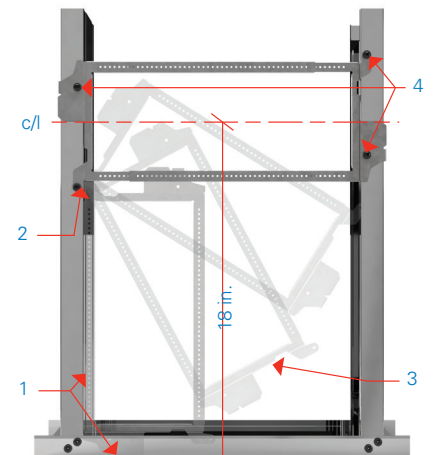
1. With bracket fully collapsed, align next to stud with right side at the floor.
2. Install sheet metal screw into pivot point.
3. Rotate bracket around the installed screw at the pivot point.
4. Expand bracket, snap to stud and affix with screws. Center line will be 18" AFF.

Ceiling clips for BBT brackets

- Installs onto BBT-WF with two screws for installation into T-Grid ceilings
- Box attached with BBA or BBA-4 alignment bracket
- Wide support prevents bracket from rocking, and rigidity of BBT-WF reduces pressure on the ceiling tile
- Sheet metal screw location and loop hole for support drop wire aids compliance with NEC 314.23 (D)
- Install fire alarm boxes, nurse call, lighting controls, etc. into the ceiling grid using the same brackets installed in the wall, reducing overall SKU count
- Install multiple boxes into the same ceiling tile
- Available for field or prefab shop assembly, or preassembled on a BBT-WF bracket with box and cover preinstalled

The combination of the BBT-WF and BBT-TG bracket is not listed to support a luminaire.

Catalog #	Description	Box qty.
BBT-TG	Ceiling clips for BBT brackets	100

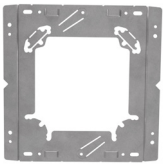


Powering Business Worldwide

Box mounting brackets

The BBA box mounting bracket and the BBA-4 box mounting bracket with support flange snap easily onto the BBT-HF telescoping bracket.

Catalog #	Description	Stud Depth	Box Qty.
BBA	Box mounting bracket	---	25
BBA-2	Box mounting bracket with back side support	2½"	25
BBA-4	Box mounting bracket with back side support	2½" - 6"	25
BBA-MG	Box mounting bracket for multi-gang and 4 ¹¹ / ₁₆ " boxes	2½" - 3 ⁵ / ₈ "	25



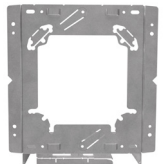
BBA front



BBA back



BBA-2 side



BBA-4 front



BBA-4 back



BBA-MG

Features

- Marty Mouse™ ears to retain the box when plaster ring is removed
- Rabbit Ears™ to attach a plaster ring for data devices without using a box
- Accepts 4", 4¹¹/₁₆" and 5" square box sizes
- Built-in, snap off back support extension for studs from 2.5" to 6" studs
- No need to measure additional box heights – features interlocking brackets to easily and quickly mount boxes side-by-side
- Faster daisy chain boxes; two brackets mount to the same side of the stud
- Works with standard or adjustable mud rings and Rapid Ring self-adjusting pre-fab ring
- Use with BBT-HF or directly to stud
- BBA-MG bracket supports boxes in ceiling or wall
- BBA-MG UL is listed for multiple gang box
- BBA-MG is ideal for fire alarm speaker strobes and nurse call stations in hospitals
- UL Listed for U.S. and Canada; CSA certified

Patent pending (all parts)

Advantage of B-Line series brackets

No need to measure box heights with interlocking brackets

Mounting boxes side-by-side has never been easier.

- Designed to mount two boxes at exactly the same height on either side of the stud.

No box needed for DataComm accessories

Innovative rabbit ears make it possible.

- Rabbit Ears and mud ring allow data communication devices, such as card readers, to be attached to the bracket without the use of a box.

One SKU mounts multiple box sizes - fewer parts to handle on the job-site

Built-in back support accessory for job-site flexibility.

- Bracket accepts 4" 4¹¹/₁₆", and 5" boxes.
- Bracket extender easily snaps off of the bracket to snap into place as a back support for up to 6" stud depths.

Faster daisy chain boxes

Faster installs with B-Line series solutions.

- Two brackets mount to the same side of a stud at the same height.



Eaton.com/BBT-HF

Eaton
1000 Eaton Boulevard
Cleveland, OH 44122
United States
Eaton.com

© 2024 Eaton
All Rights Reserved
Printed in USA
Publication No. SA306031EN
November 2024

EATON
Powering Business Worldwide

Eaton is a registered trademark.

All other trademarks are property of their respective owners.

Follow us on social media to get the latest product and support information.

