


Spring steel fasteners

B-LINE
SERIES



KwikWire™
Hanging system

EATON

Powering Business Worldwide

KwikWire hanging system

Takes the strain out of hanging with chain



The KwikWire™ Hanging System is a flexible indoor replacement for jack chain and all thread rod that will help reduce your hanging time.

- Installs up to 50% faster - can quickly wrap around beams with no drilling required
- Simple height adjustments are made by releasing the clamp's adjustment pin - **no tools required**
- Aesthetic appeal - blends in with upper structural supports
- Compatible with many fastener, anchor, and hanger products
- Ideal for sloped ceiling applications - will support loads at up to a 60° angle from vertical
- 2 sku's cover a wide range of application requirements



Application Photos

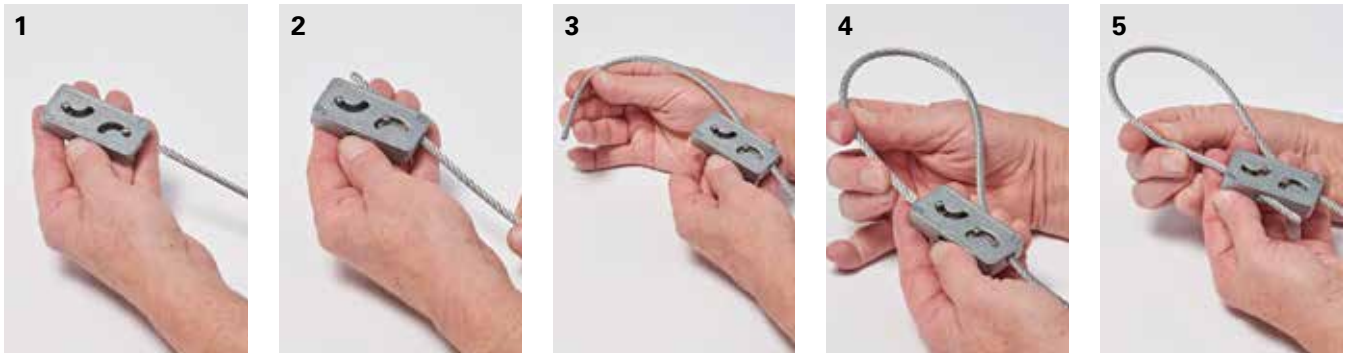


Applications for the KwikWire Hanging System include:

- Light fixtures
- Sway bracing
- Wire basket cable tray
- Air handling equipment
- HVAC duct support
- Sign/banner supports
- Bus duct
- Drop ceilings

KwikWire installation

Instructions for installing the wire rope in the clamp



1. Pass the wire rope through the KwikWire™ clamp
2. Loop wire rope through or around support
3. Pass wire rope back through KwikWire clamp
4. Push wire rope through clamp leaving 2" to 3" tail, then apply tension on wire rope
5. To adjust, remove tension and pull wire rope slightly to disengage teeth, slide adjustment pin in direction shown by arrow to release wire rope.

No tools are required.

KwikWire System Recommendations:

- Do not exceed the safe working load of the products
- KwikWire clamp load ratings are guaranteed only when used in combination with B-Line series wire rope
- Do not use for overhead lifting or hoisting
- Do not use if cable or components are visibly distorted or worn
- Remove damaged cable end prior to inserting in KwikWire clamp
- Do not paint cable near working area of KwikWire clamp
- Do not apply lubricant
- Keep product clean and free of dirt
- Do not use clamp on coated wire rope
- Do not use in chlorinated or caustic atmospheres
- For use in dry locations
- Our BKCC tool is recommended for cutting wire rope to prevent fraying

Note: Only use B-Line series wire rope with KwikWire clamps.

KwikWire clamps, wire rope & cable cutter

KwikWire Clamps

KwikWire™ Clamps

| UPC/Part Number | Catalog Number | For Use With Wire Rope Diameters | Box Qty. |
|-----------------|----------------|----------------------------------|----------|
| 782051 54697 | BKC100 | 1/16" & 3/32" | 100 |
| 782051 54698 | BKC200-1 | 3/32", 1/8" & 3/16" | 50 |

See table below for KwikWire Clamp Working Loads

KwikWire Clamp Working Loads*

| Clamp Part No. | Wire Rope Diameter | Lbs. Safety Factor 4 |
|----------------|--------------------|----------------------|
| BKC100 | 1/16" | 0-75 |
| BKC100 | 3/32" | 25-150 |
| BKC200-1 | 3/32" | 25-150 |
| BKC200-1 | 1/8" | 25-250 |
| BKC200-1 | 3/16" | 50-500 |



* Working loads shown are for hanging vertically. For suspending at 15°, 30°, 45°, or 60° angles from vertical, use the following percentage of the working loads from the chart:
 15° = 96% | 30° = 86% | 45° = 70% | 60° = 50%

KwikWire Wire Rope

KwikWire Wire Rope (Uncoated Galvanized Wire)

| UPC/Part Number | Catalog Number | Rope Diameter | Working Load Lbs. | Spool Qty. |
|-----------------|----------------|---------------|-------------------|------------|
| 782051 40725 | BKW063 (1) | 1/16" | 96 | 500 ft. |
| 782051 40727 | BKW094 (1) | 3/32" | 184 | 500 ft. |
| 782051 40733 | BKW125 (1) | 1/8" | 340 | 500 ft. |
| 782051 40734 | BKW188 (2) | 3/16" | 840 | 200 ft. |

- (1) Wire Rope Construction Type 7x7
- (2) Wire Rope Construction Type 7x19



KwikWire Cable Cutter

KwikWire Cable Cutter**

| UPC/Part Number | Catalog Number | Box Qty. |
|-----------------|----------------|----------|
| 782051 40297 | BKCC | 1 |

** Danger: Never use cutters on energized circuits, wire, or cable

- Wire rope cutter for cutting all wire rope sizes



KwikWire Kits

KwikPak Wire Rope & Clamps

KwikPak™ Wire Rope & Clamps

| UPC/Part Number | Catalog Number | Kit Includes | Box Qty. |
|-----------------|----------------|---|----------|
| 78205140749 | BKP10063 | BKC100 (100 pcs.) 1/16" Ø Wire Rope (500 ft.) | 1 |
| 78205140751 | BKP10094 | BKC100 (100 pcs.) 3/32" Ø Wire Rope (500 ft.) | 1 |
| 78205140761 | BKP20125 | BKC200-1 (50 pcs.) 1/8" Ø Wire Rope (500 ft.) | 1 |
| 78205140763 | BKP20188 | BKC200-1 (50 pcs.) 3/16" Ø Wire Rope (500 ft.) | 1 |



- KwikPak include KwikWire clamps and a spool of wire rope
- KwikPaks are shipped in a specially designed dispenser box to ease field cutting of wire

KwikWire Hanger

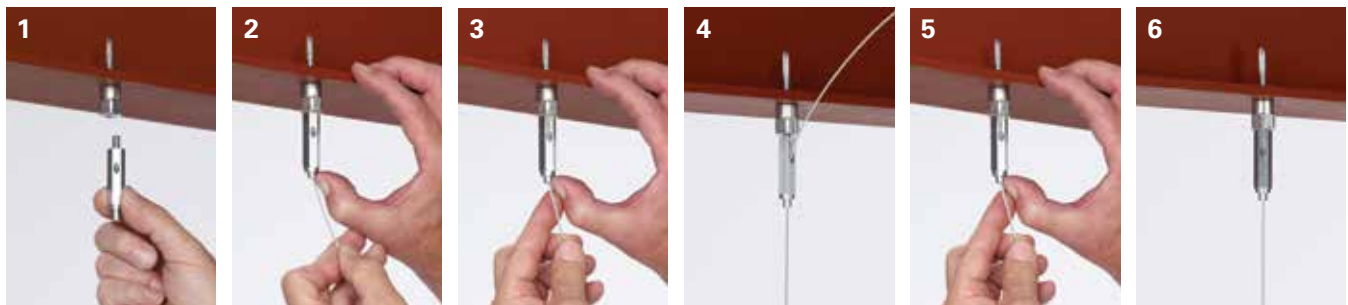
KwikWire Hanger

| UPC/Part Number | Thread Size | Wire Rope Diameter in. (mm) | Loading* lbs. (kg) | SF5 | Box Qty. |
|-----------------|-------------|-----------------------------|--------------------|------|----------|
| BKF100-4 | 1/4"-20 | 1/16" (1.5) | 45 | (20) | 50 |
| BKF100-6 | 3/8"-16 | 3/32" (2.5) | 90 | (40) | 50 |



- KwikWire hanger combines the versatility of a bolt with an adjustable wire rope solution
- Can be quickly installed in existing anchors or metal brackets with a nut
- ARS, ARC, and ARW anchors are ideal for use with KwikWire hangers
- Ideal for supporting light fixtures, wire basket cable tray, HVAC ducts, and sign/banner supports
- Allows for tool-less adjustment of wire rope

KwikWire Hanger Installation



1. Screw KwikWire Hanger into installed hanger support (ARS anchor pictured)
2. Push cable wire up through the bottom of KwikWire Hanger
3. Continue pushing through until 1/4" minimum is extending out the side of the KwikWire Hanger
4. To adjust up - pull or push more cable wire through KwikWire Hanger
5. To adjust down - push up on bottom of KwikWire Hanger and allow cable wire to feed down
6. When hanging the cable wire is complete, cut off any excess cable wire if desired

KwikWire accessory features & numbering system

KwikWire Features & Benefits

- Helps reduce on the job installation time
- Can be installed quickly without drilling into existing structure
- Increases versatility in the field
- KwikWire accessory system reduces inventory and shipping costs
- No more sawing, filing, or fixing nuts
- Ideal for use for hanging cable tray, lighting, and HVAC
- Eliminates the need for all threaded rod
- Cost effective solution for jack chain
- "Y" style accessories require 50% less drilling

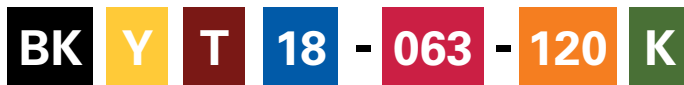


KwikWire Accessory Numbering System

| Product Line | Assembly Configuration | Leg Termination | Leg Length | Wire Rope Diameter | Straight Length | Assembly or Kit |
|---------------|--|---|---|----------------------------|--|--|
| BK = KwikWire | Blank = Single Leg Y = 2 Legs 3 = 3 Legs | A = Angle Bracket with Pin H = Hook L = Loop T = Toggle W = Fuse Cut B25 = Bolt with 1/4"-20" Thread B38 = Bolt with 3/8"-16" Thread BM6 = Bolt with M6 Thread BM8 = Bolt with M8 Thread BM10 = Bolt with M10 Thread | Blank = See Straight Length 18 = 18" Leg 30 = 30" Leg | 063 = 1/16" 094 = 3/32" | Blank = Loop with Plastic Tube 18 = 18" 30 = 30" 40 = 40" 80 = 80" 120 = 120" 180 = 180" 240 = 240" 360 = 360" | Blank = Assembly Only K = Kit (Assembly & BKC100 Clamp) |

Examples

KwikWire Accessory
BKYT18-094-120K



2 legs - toggle leg termination - 18" legs - 1/16" diameter wire - 120" straight length - kit with clamp

KwikWire Accessory
BKL-063-120K



single leg - looped leg termination - 1/16" diameter wire - 120" straight length - kit with clamp

KwikWire Loop Termination

KwikWire Loop Termination

| UPC/Part Number | Catalog Number | Wire Rope Diameter | Length |
|-----------------|----------------|--------------------|--------|
| 782051 67517 | BKL-063-40 | 1/16" | 40" |
| 782051 67518 | BKL-063-80 | 1/16" | 80" |
| 782051 67519 | BKL-063-120 | 1/16" | 120" |
| 782051 67521 | BKL-063-180 | 1/16" | 180" |
| 782051 68980 | BKL-063-240 | 1/16" | 240" |
| 782051 67522 | BKL-063-360 | 1/16" | 360" |
| 782051 67523 | BKL-094-40 | 3/32" | 40" |
| 782051 67524 | BKL-094-80 | 3/32" | 80" |
| 782051 67525 | BKL-094-120 | 3/32" | 120" |
| 782051 67526 | BKL-094-180 | 3/32" | 180" |
| 782051 68981 | BKL-094-240 | 3/32" | 240" |
| 782051 67538 | BKL-094-360 | 3/32" | 360" |



Box Quantity - 20
5 bags containing 4 pieces per bag

KwikWire Loop Termination Kits

KwikWire Loop Termination Kits

| UPC/Part Number | Catalog Number | Wire Rope Diameter | Length |
|-----------------|----------------|--------------------|--------|
| 782051 67346 | BKL-063-40K | 1/16" | 40" |
| 782051 67347 | BKL-063-80K | 1/16" | 80" |
| 782051 67348 | BKL-063-120K | 1/16" | 120" |
| 782051 67349 | BKL-063-180K | 1/16" | 180" |
| 782051 68838 | BKL-063-240K | 1/16" | 240" |
| 782051 67350 | BKL-063-360K | 1/16" | 360" |
| 782051 67351 | BKL-094-40K | 3/32" | 40" |
| 782051 67352 | BKL-094-80K | 3/32" | 80" |
| 782051 67353 | BKL-094-120K | 3/32" | 120" |
| 782051 67354 | BKL-094-180K | 3/32" | 180" |
| 782051 68839 | BKL-094-240K | 3/32" | 240" |
| 782051 67355 | BKL-094-360K | 3/32" | 360" |



Box Quantity - 20
5 bags containing 4 pieces per bag

- Available as a wire rope with loop termination only or as a ready-to-use kit with a BKC100 clamp
- Available in lengths of 40", 80", 120", 180", 240", and 360"

KwikWire accessories

KwikWire Single Style Hook Termination

KwikWire™ Single Style Hook Termination

| UPC/Part Number | Catalog Number | Wire Rope Diameter | Length |
|-----------------|----------------|--------------------|--------|
| 782051 67501 | BKH-094-40 | 3/32" | 40" |
| 782051 67502 | BKH-094-80 | 3/32" | 80" |
| 782051 67503 | BKH-094-120 | 3/32" | 120" |
| 782051 68986 | BKH-094-180 | 3/32" | 180" |
| 782051 68987 | BKH-094-240 | 3/32" | 240" |
| 782051 67504 | BKH-094-360 | 3/32" | 360" |



Box Quantity - 20

5 bags containing 4 pieces per bag

KwikWire Single Style Hook Termination Kits

KwikWire Single Style Hook Termination Kits

| UPC/Part Number | Catalog Number | Wire Rope Diameter | Length |
|-----------------|----------------|--------------------|--------|
| 782051 67337 | BKH-094-40K | 3/32" | 40" |
| 782051 67338 | BKH-094-80K | 3/32" | 80" |
| 782051 67339 | BKH-094-120K | 3/32" | 120" |
| 782051 68841 | BKH-094-180K | 3/32" | 180" |
| 782051 68944 | BKH-094-240K | 3/32" | 240" |
| 782051 67340 | BKH-094-360K | 3/32" | 360" |



Box Quantity - 20

5 bags containing 4 pieces per bag

KwikWire 'Y' Style Hook Termination With Loop

KwikWire 'Y' Style Hook Termination With Loop

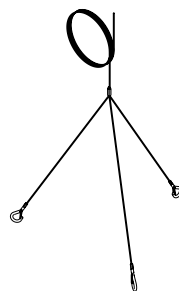
| UPC/Part Number | Catalog Number | Wire Rope Diameter | Length |
|-----------------|----------------|--------------------|--------|
| 782051 67341 | BKYH18-094 | 3/32" | 18" |
| 782051 68978 | BKYH30-094 | 3/32" | 30" |



Box Quantity - 10

5 bags containing 2 pieces per bag

- Hook designed to accept up to 3/8" diameter wire
- Available as a wire rope with hook termination only or as a ready-to-use kit with a BKC100 clamp
- Available in lengths of 40", 80", 120", 180", 240", and 360"
- Available in single, double (Y), and triple (3) leg styles



Triple (3) leg style

KwikWire 'Y' Style Hook Termination

KwikWire 'Y' Style Hook Termination

| UPC/Part Number | Catalog Number | Leg Length | Wire Rope Diameter | Length |
|-----------------|----------------|------------|--------------------|--------|
| 782051 67505 | BKYH18-094-40 | 18" | 3/32" | 40" |
| 782051 67506 | BKYH18-094-80 | 18" | 3/32" | 80" |
| 782051 67514 | BKYH18-094-120 | 18" | 3/32" | 120" |
| 782051 68988 | BKYH18-094-180 | 18" | 3/32" | 180" |
| 782051 68989 | BKYH18-094-240 | 18" | 3/32" | 240" |
| 782051 67515 | BKYH18-094-360 | 18" | 3/32" | 360" |
| 782051 68990 | BKYH30-094-40 | 30" | 3/32" | 40" |
| 782051 68991 | BKYH30-094-80 | 30" | 3/32" | 80" |
| 782051 68992 | BKYH30-094-120 | 30" | 3/32" | 120" |
| 782051 68993 | BKYH30-094-180 | 30" | 3/32" | 180" |
| 782051 68994 | BKYH30-094-240 | 30" | 3/32" | 240" |
| 782051 68995 | BKYH30-094-360 | 30" | 3/32" | 360" |



Box Quantity - 10
5 bags containing 2 pieces per bag

KwikWire 'Y' Style Hook Termination Kits

KwikWire 'Y' Style Hook Termination Kits

| UPC/Part Number | Catalog Number | Leg Length | Wire Rope Diameter | Length |
|-----------------|-----------------|------------|--------------------|--------|
| 782051 67342 | BKYH18-094-40K | 18" | 3/32" | 40" |
| 782051 67343 | BKYH18-094-80K | 18" | 3/32" | 80" |
| 782051 67344 | BKYH18-094-120K | 18" | 3/32" | 120" |
| 782051 68856 | BKYH18-094-180K | 18" | 3/32" | 180" |
| 782051 68945 | BKYH18-094-240K | 18" | 3/32" | 240" |
| 782051 67345 | BKYH18-094-360K | 18" | 3/32" | 360" |
| 782051 68946 | BKYH30-094-40K | 30" | 3/32" | 40" |
| 782051 68948 | BKYH30-094-80K | 30" | 3/32" | 80" |
| 782051 68949 | BKYH30-094-120K | 30" | 3/32" | 120" |
| 782051 68950 | BKYH30-094-180K | 30" | 3/32" | 180" |
| 782051 68951 | BKYH30-094-240K | 30" | 3/32" | 240" |
| 782051 68952 | BKYH30-094-360K | 30" | 3/32" | 360" |



Box Quantity - 10
5 bags containing 2 pieces per bag

- Hook designed to accept up to 3/8" diameter wire
- Available as a wire rope with loop termination only or as a ready-to-use kit with a BKC100 clamp
- Available in lengths of 40", 80", 120", 180", 240", and 360"

KwikWire accessories

KwikWire Single Style Toggle Termination

KwikWire Single Style Toggle Termination

| UPC/Part Number | Catalog Number | Wire Rope Diameter | Length |
|-----------------|----------------|--------------------|--------|
| 782051 68996 | BKT-063-40 | 1/16" | 40" |
| 782051 68997 | BKT-063-80 | 1/16" | 80" |
| 782051 68998 | BKT-063-120 | 1/16" | 120" |
| 782051 68999 | BKT-063-180 | 1/16" | 180" |
| 782051 69000 | BKT-063-240 | 1/16" | 240" |
| 782051 69001 | BKT-063-360 | 1/16" | 360" |



Box Quantity - 20
5 bags containing 4 pieces per bag

KwikWire Single Style Toggle Termination Kits

KwikWire Single Style Toggle Termination Kits

| UPC/Part Number | Catalog Number | Wire Rope Diameter | Length |
|-----------------|----------------|--------------------|--------|
| 782051 68956 | BKT-063-40K | 1/16" | 40" |
| 782051 68845 | BKT-063-80K | 1/16" | 80" |
| 782051 68842 | BKT-063-120K | 1/16" | 120" |
| 782051 68843 | BKT-063-180K | 1/16" | 180" |
| 782051 68957 | BKT-063-240K | 1/16" | 240" |
| 782051 68844 | BKT-063-360K | 1/16" | 360" |



Box Quantity - 20
5 bags containing 4 pieces per bag

KwikWire 'Y' Style Toggle Termination With Loop

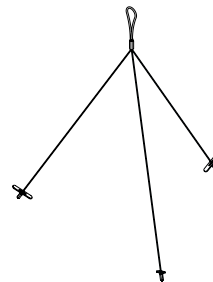
KwikWire 'Y' Style Toggle Termination With Loop

| UPC/Part Number | Catalog Number | Wire Rope Diameter | Length |
|-----------------|----------------|--------------------|--------|
| 782051 68440 | BKYT12-063 | 1/16" | 12" |
| 782051 67356 | BKYT18-063 | 1/16" | 18" |
| 782051 67362 | BKYT30-063 | 1/16" | 30" |



Box Quantity - 10
5 bags containing 2 pieces per bag

- Available as a wire rope with toggle termination only or as a ready-to-use kit with a BKC100 clamp
- Available in lengths of 40", 80", 120", 180", 240", and 360"
- Available in single, double (Y), and triple (3) leg styles
- All triple (3) leg styles are non-stock, consult us for lead times



Triple (3) leg style

KwikWire 'Y' Style Toggle Termination

KwikWire 'Y' Style Toggle Termination

| UPC/Part Number | Catalog Number | Leg Length | Wire Rope Diameter | Length |
|-----------------|----------------|------------|--------------------|--------|
| 782051 69002 | BKYT12-063-40 | 12" | 1/16" | 40" |
| 782051 69003 | BKYT12-063-80 | 12" | 1/16" | 80" |
| 782051 69004 | BKYT12-063-120 | 12" | 1/16" | 120" |
| 782051 69005 | BKYT12-063-180 | 12" | 1/16" | 180" |
| 782051 69006 | BKYT12-063-240 | 12" | 1/16" | 240" |
| 782051 69007 | BKYT12-063-360 | 12" | 1/16" | 360" |
| 782051 67540 | BKYT18-063-40 | 18" | 1/16" | 40" |
| 782051 67541 | BKYT18-063-80 | 18" | 1/16" | 80" |
| 782051 67542 | BKYT18-063-120 | 18" | 1/16" | 120" |
| 782051 67543 | BKYT18-063-180 | 18" | 1/16" | 180" |
| 782051 69008 | BKYT18-063-240 | 18" | 1/16" | 240" |
| 782051 67544 | BKYT18-063-360 | 18" | 1/16" | 360" |
| 782051 67545 | BKYT30-063-40 | 30" | 1/16" | 40" |
| 782051 67546 | BKYT30-063-80 | 30" | 1/16" | 80" |
| 782051 67547 | BKYT30-063-120 | 30" | 1/16" | 120" |
| 782051 67548 | BKYT30-063-180 | 30" | 1/16" | 180" |
| 782051 69009 | BKYT30-063-240 | 30" | 1/16" | 240" |
| 782051 67549 | BKYT30-063-360 | 30" | 1/16" | 360" |



Box Quantity - 10
5 bags containing 2 pieces per bag

KwikWire 'Y' Style Toggle Termination Kits

KwikWire 'Y' Style Toggle Termination Kits

| UPC/Part Number | Catalog Number | Leg Length | Wire Rope Diameter | Length |
|-----------------|-----------------|------------|--------------------|--------|
| 782051 68958 | BKYT12-063-40K | 12" | 1/16" | 40" |
| 782051 68959 | BKYT12-063-80K | 12" | 1/16" | 80" |
| 782051 68960 | BKYT12-063-120K | 12" | 1/16" | 120" |
| 782051 68961 | BKYT12-063-180K | 12" | 1/16" | 180" |
| 782051 68962 | BKYT12-063-240K | 12" | 1/16" | 240" |
| 782051 68963 | BKYT12-063-360K | 12" | 1/16" | 360" |
| 782051 67357 | BKYT18-063-40K | 18" | 1/16" | 40" |
| 782051 67358 | BKYT18-063-80K | 18" | 1/16" | 80" |
| 782051 67359 | BKYT18-063-120K | 18" | 1/16" | 120" |
| 782051 67360 | BKYT18-063-180K | 18" | 1/16" | 180" |
| 782051 68964 | BKYT18-063-240K | 18" | 1/16" | 240" |
| 782051 67361 | BKYT18-063-360K | 18" | 1/16" | 360" |
| 782051 67363 | BKYT30-063-40K | 30" | 1/16" | 40" |
| 782051 67364 | BKYT30-063-80K | 30" | 1/16" | 80" |
| 782051 67365 | BKYT30-063-120K | 30" | 1/16" | 120" |
| 782051 67366 | BKYT30-063-180K | 30" | 1/16" | 180" |
| 782051 68965 | BKYT30-063-240K | 30" | 1/16" | 240" |
| 782051 67367 | BKYT30-063-360K | 30" | 1/16" | 360" |



Box Quantity - 10
5 bags containing 2 pieces per bag

- Available as a wire rope with loop termination only or as a ready-to-use kit with a BKC100 clamp
- Available in lengths of 40", 80", 120", 180", 240", and 360"

KwikWire accessories

KwikWire Bolt Termination

KwikWire Bolt Termination

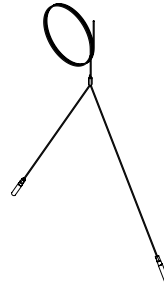
| UPC/Part Number | Catalog Number | Thread Size | Wire Rope Diameter | Length |
|-----------------|----------------|-------------|--------------------|--------|
| 782051 67492 | BKB25-063-40 | 1/4"-20 | 1/16" | 40" |
| 782051 67493 | BKB25-063-80 | 1/4"-20 | 1/16" | 80" |
| 782051 67494 | BKB25-063-120 | 1/4"-20 | 1/16" | 120" |
| 782051 69010 | BKB25-063-180 | 1/4"-20 | 1/16" | 180" |
| 782051 69011 | BKB25-063-240 | 1/4"-20 | 1/16" | 240" |
| 782051 67495 | BKB25-063-360 | 1/4"-20 | 1/16" | 360" |
| 782051 67496 | BKB38-094-40 | 3/8"-16 | 3/32" | 40" |
| 782051 67497 | BKB38-094-80 | 3/8"-16 | 3/32" | 80" |
| 782051 67498 | BKB38-094-120 | 3/8"-16 | 3/32" | 120" |
| 782051 69012 | BKB38-094-180 | 3/8"-16 | 3/32" | 180" |
| 782051 69013 | BKB38-094-240 | 3/8"-16 | 3/32" | 240" |
| 782051 67499 | BKB38-094-360 | 3/8"-16 | 3/32" | 360" |



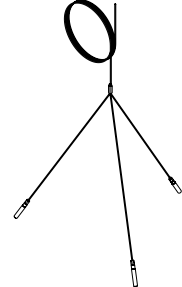
Box Quantity - 20

5 bags containing 4 pieces per bag

- Ideal for use with ARS, ARC, ADI, ACPW, or ACPD anchors
- Available as a wire rope with bolt termination only or as a ready-to-use kit with a BKC100 clamp
- Available in lengths of 40", 80", 120", 180", 240", and 360"
- Available in single, double (Y), and triple (3) leg styles
- All triple (3) leg styles are non-stock, consult us for lead times



Double (Y) leg style



Triple (3) leg style

KwikWire Bolt Termination Kits

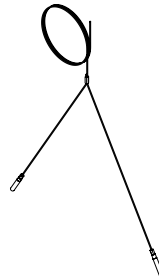
KwikWire Bolt Termination Kits

| UPC/Part Number | Catalog Number | Thread Size | Wire Rope Diameter | Length |
|-----------------|----------------|-------------|--------------------|--------|
| 782051 67329 | BKB25-063-40K | 1/4"-20 | 1/16" | 40" |
| 782051 67330 | BKB25-063-80K | 1/4"-20 | 1/16" | 80" |
| 782051 67331 | BKB25-063-120K | 1/4"-20 | 1/16" | 120" |
| 782051 68966 | BKB25-063-180K | 1/4"-20 | 1/16" | 180" |
| 782051 68967 | BKB25-063-240K | 1/4"-20 | 1/16" | 240" |
| 782051 67332 | BKB25-063-360K | 1/4"-20 | 1/16" | 360" |
| 782051 67333 | BKB38-094-40K | 3/8"-16 | 3/32" | 40" |
| 782051 67334 | BKB38-094-80K | 3/8"-16 | 3/32" | 80" |
| 782051 67335 | BKB38-094-120K | 3/8"-16 | 3/32" | 120" |
| 782051 68968 | BKB38-094-180K | 3/8"-16 | 3/32" | 180" |
| 782051 68969 | BKB38-094-240K | 3/8"-16 | 3/32" | 240" |
| 782051 67336 | BKB38-094-360K | 3/8"-16 | 3/32" | 360" |

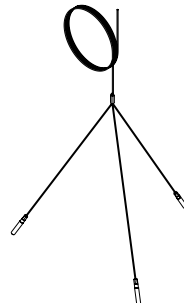


Box Quantity - 20
5 bags containing 4 pieces per bag

- Ideal for use with ARS, ARC, ADI, ACPW, or ACPD anchors
- Available as a wire rope with bolt termination only or as a ready-to-use kit with a BKC100 clamp
- Available in lengths of 40", 80", 120", 180", 240", and 360"
- Available in single, double (Y), and triple (3) leg styles
- All triple (3) leg styles are non-stock, consult us for lead times



Double (Y) leg style



Triple (3) leg style

KwikWire cable assemblies & accessories

KwikWire Angle Bracket Termination

KwikWire Angle Bracket Toggle Termination

| UPC/Part Number | Catalog Number | Wire Rope Diameter | Length |
|-----------------|----------------|--------------------|--------|
| 782051 68982 | BKA-063-40 | 1/16" | 40" |
| 782051 68983 | BKA-063-80 | 1/16" | 80" |
| 782051 67550 | BKA-063-120 | 1/16" | 120" |
| 782051 67551 | BKA-063-180 | 1/16" | 180" |
| 782051 68984 | BKA-063-240 | 1/16" | 240" |
| 782051 68985 | BKA-063-360 | 1/16" | 360" |



Box Quantity - 20
5 bags containing 4 pieces per bag

KwikWire Angle Bracket Termination Kits

KwikWire Angle Bracket Toggle Termination Kits

| UPC/Part Number | Catalog Number | Wire Rope Diameter | Length |
|-----------------|----------------|--------------------|--------|
| 782051 68933 | BKA-063-40K | 1/16" | 40" |
| 782051 68934 | BKA-063-80K | 1/16" | 80" |
| 782051 67368 | BKA-063-120K | 1/16" | 120" |
| 782051 67369 | BKA-063-180K | 1/16" | 180" |
| 782051 68935 | BKA-063-240K | 1/16" | 240" |
| 782051 68943 | BKA-063-360K | 1/16" | 360" |



Box Quantity - 20
5 bags containing 4 pieces per bag

- Available as a wire rope with angle bracket termination only or as a ready-to-use kit with a BKC100 clamp
- Available in lengths of 40", 80", 120", 180", 240", and 360"

KwikWire Accessories

KwikWire Bolt Termination

| UPC/Part Number | Catalog Number | Description | Box Qty. |
|-----------------|----------------|--|----------|
| 782051 40766 | BKCP | Air Duct Corner Protectors | 100 |
| 781011 56059 | B601-62† | Air Duct Support | 100 |
| 781011 04270 | BF3† | Vertical Flange Hanger For 1/16" to 1/4" Thick Flanges | 100 |
| 781011 04271 | BF4† | 'Z' Purlin Hanger For 1/16" to 1/4" Thick Flanges | 100 |
| 781011 18290 | BE-1-2† | Beam Fastener For 3/32" to 9/64" Thick Flanges | 100 |
| 781011 18295 | BE-2-4† | Beam Fastener For 1/8" to 1/4" Thick Flanges | 100 |
| 781011 18300 | BE-5-8 | Beam Fastener For 5/16" to 1/2" Thick Flanges | 100 |
| 781011 18305 | BE-9-12† | Beam Fastener For 9/16" to 3/4" Thick Flanges | 100 |
| 781011 01236 | BH15† | Side Mount Fluorescent Light Fixture Hanger | 100 |
| 781011 01237 | BH16† | Top Mount Fluorescent Light Fixture Hanger | 100 |
| 782051 53323 | ARS-25-100SW† | Steel Side Mount Rod Hanger | 100 |
| 782051 53336 | ARW-25-100SW† | Concrete Side Mount Rod Hanger | 100 |
| 781011 04294 | AWA-25-200WH† | Wedge Expansion Wire Hanger | 100 |
| 781011 53277 | ADA-18WH† | Drive Anchor Wire Hanger | 100 |
| 781011 04297 | ADA-25WH† | Drive Anchor Wire Hanger | 100 |
| 781011 53342 | ASA-31-150WH† | Sleeve Type Expansion Wire Hanger | 100 |

† For loading, see spring steel fastener catalog



BKCP



BH15



BH16



BE-1-2
BE-2-4

BE-5-8
BE-9-12



B601-62



ARS-25-100SW



ARW-25-100SW



ASA-31-150WH



AWA-25-200WH



ADA-18WH
ADA-25WH



BF3



BF4

For more information
visit [Eaton.com/kwikwire](https://www.eaton.com/kwikwire).

U.S. Customer Service Center is staffed Monday through Friday from 7 a.m. to 5 p.m. Central Standard Time.



Eaton
1000 Eaton Boulevard
Cleveland, OH 44122
United States
[Eaton.com](https://www.eaton.com)

© 2024 Eaton
All Rights Reserved
Printed in USA
Publication No. CA306003EN / KWHS-23
March 2024

Eaton is a registered trademark.

All other trademarks are property
of their respective owners.

Follow us on social media to get the
latest product and support information.

