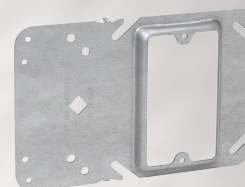
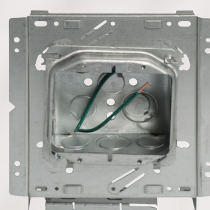
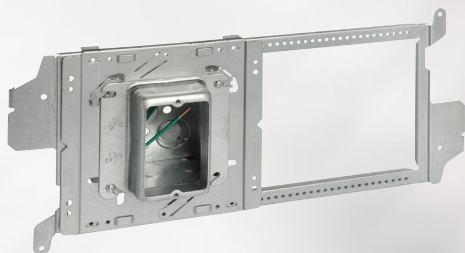
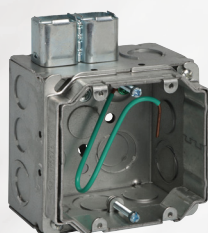
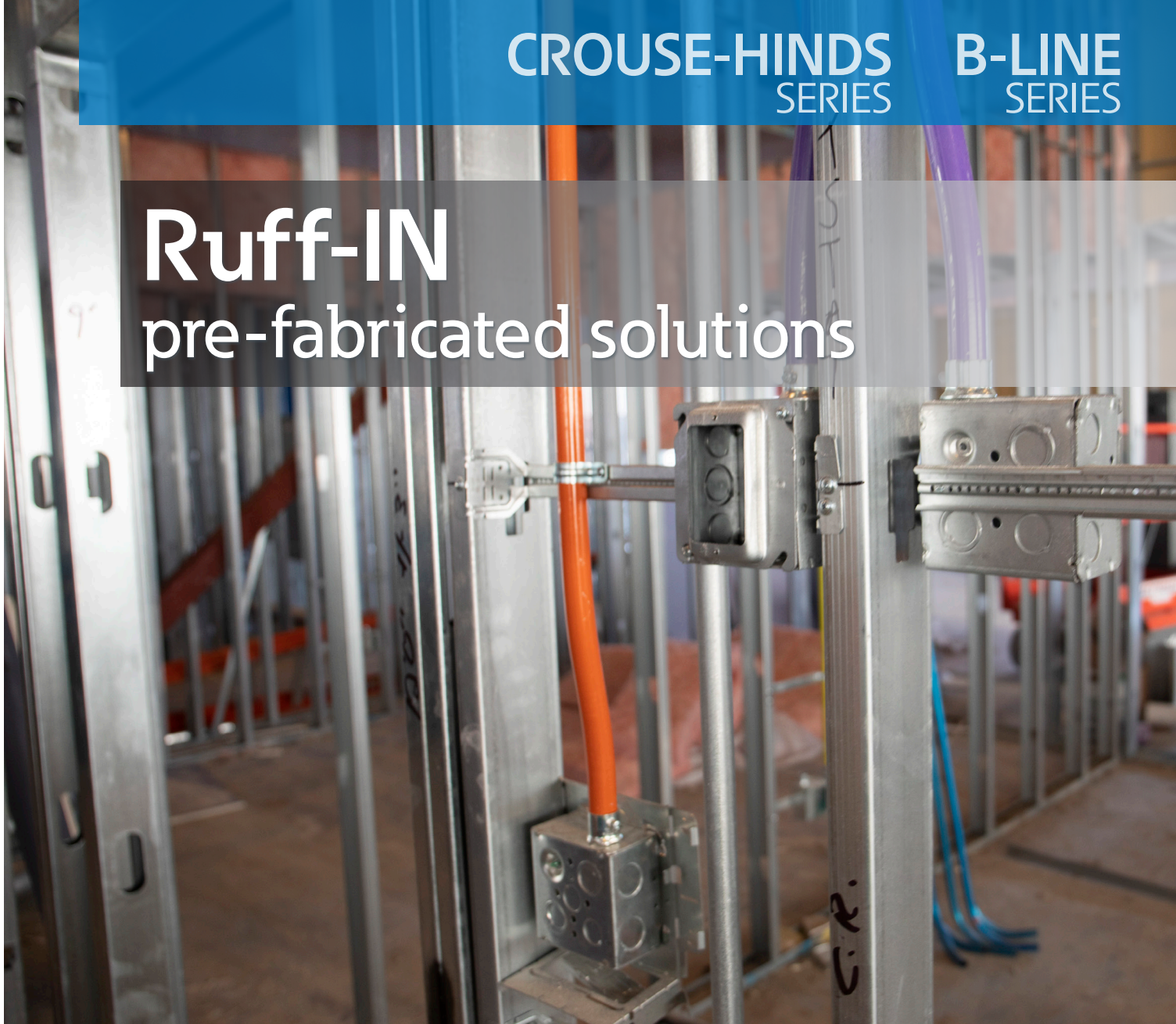


CROUSE-HINDS
SERIES

B-LINE
SERIES

Ruff-IN pre-fabricated solutions



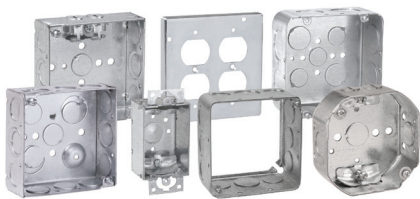
EATON

Powering Business Worldwide

Ruff-IN™ prefabricated electrical assemblies are backed by a full commercial product offering designed for **dependable performance & productivity.**



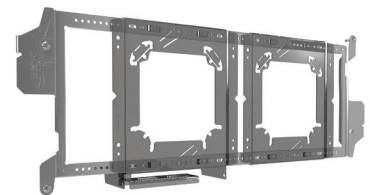
The portfolio delivers the quality and breadth of offering in styles and materials to meet customer requirements and preferences. With industry-leading innovation, our products deliver real customer value.



Outlet Boxes & Covers



Electrical Fittings



Fasteners & Supports



NOTICE
Eaton reserves the right to change the specifications, materials, equipment, prices or the availability of products at any time without prior notice. While every effort has been made to assure the accuracy of information contained in this catalog at the time of publication, we are not responsible for inaccuracies resulting from undetected errors or omissions.

Ruff-IN pre-fabricated solutions catalog

Table of contents

Ruff-IN overview	4
Ruff-IN portfolio overview	5
Ruff-IN Made-to-Stock — Standard assemblies	6
Ruff-IN Made-to-Order — Configured assemblies	7
Ruff-IN Engineered-to-Order — Fully engineered solutions	8 - 9
Ruff-in solution overview	10 - 13
Ruff-IN product components	14 - 33
BBA box mounting brackets	14
Hands-free telescoping brackets	15
Telescoping brackets and mounting clips	16
Multiple box and open box mounting brackets	17
Single sided and double sided box support brackets	18 - 19
Floor mount box support brackets	20 - 21
Ceiling hangers	22
Quick-Lok outlet boxes	22
TP4, TP5 outlet boxes and Uni-Mount covers	23
Mud rings	24
Metal protector plates	25
Wiring devices	25
Concrete box clamp/cable support	26-27
Catalog numbering trees	28-29
Components listings	30-33

Industry challenges impact your bottom line

Demands of electrical contractors are at an all-time high.

Incredibly tight budgets paired with scope creep, digital deliverables, and green building initiatives like waste reduction create unique opportunities and challenges for nearly every project.

Pairing these challenges with a shrinking workforce and expedited construction schedules requires contractors to optimize labor in new ways.

Productivity challenges hit hardest at rough-in.

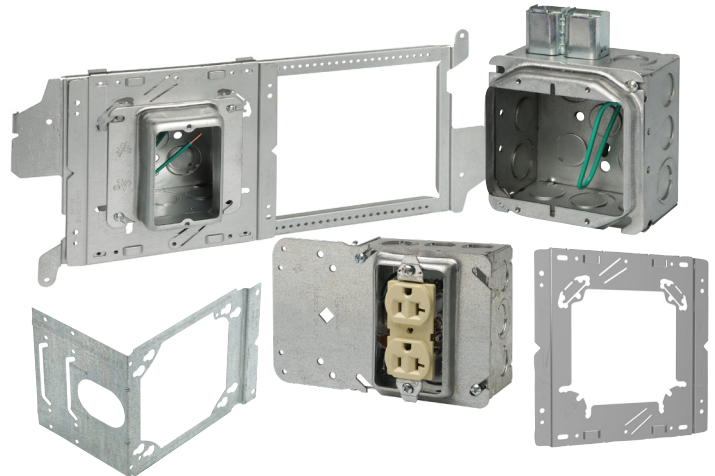
Inefficient material management and slow installation when working in ceilings and walls is costly.

Contractors need efficiency and consistency to get it done right and quickly. Eaton is here to help.



Introducing Ruff-IN solutions

- Ruff-IN is our extensive portfolio of innovative, pre-fabricated in-wall and overhead electrical assemblies
- Our Ruff-IN pre-fab solutions save on time and help reduce costs for a healthier bottom line
- Ruff-IN supports your needs for standardization, installation speed and optimization of your work force



Turn rough-in into a win!

- **Reduce material management**
- **Speed up installation**
- **Optimize skilled labor**

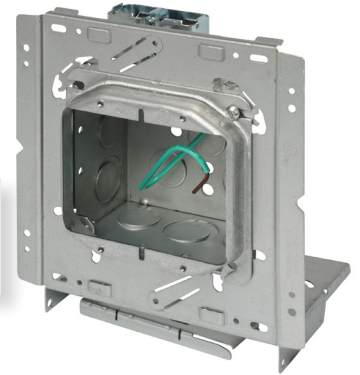
Ruff-IN your way!

Ruff-IN is available in multiple tiers, from simple assemblies to a complete engineered solution for a project. Choose the Ruff-IN solution below that best fits your needs, job-by-job or driving towards a standard solution. Contact our team for guidance toward the solution that best fits your project.

1. Ruff-IN Made-to-Stock - standard assemblies

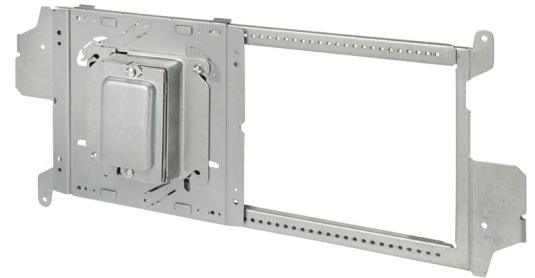
- Our most common and popular pre-fab assemblies
- Helps reduce material management costs and eliminate assembly for all your work
- Factory assembled and available for immediate shipment from stock

If you're building assemblies yourself, consider our pre-fab optimized components like Quick-Lok™ and BBT series brackets.



2. Ruff-IN Made-to-Order - configured assemblies

- Configured according to your specific project type and schedule, optimizing labor usage and maximizing installation speed
- Assembled from our extensive line of brackets, boxes, plaster rings, wiring devices, push-in connectors, cable leads, and other branch wiring accessories
- When you establish standard assemblies, your MTO assemblies become your standard, and we'll work with distributors to stock them for you



3. Ruff-IN Engineered-to-Order - fully engineered solutions

- Complete turnkey solution that begins with a free takeoff based on the construction documents. When a PO is awarded, a complete Revit model will be created to design the pre-fab solution.
- Revit model can be shared to help with trade coordination and serves as owner-as-built drawing once completed.
- Fully engineered to the project requirements using a 15+ year proven system, delivering a fast and consistent installation to optimize labor.
- Ideal for highly repetitive projects like apartments, dormitories and hotels.



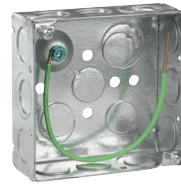
1. Ruff-IN Made-to-Stock - standard assemblies



TP403PF



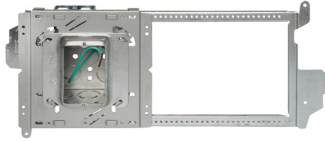
TP403G



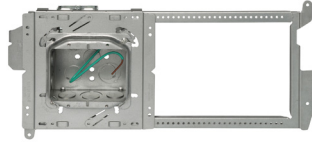
TP404PF



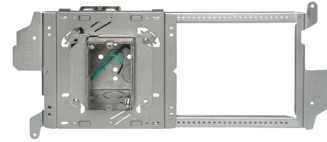
TP404G



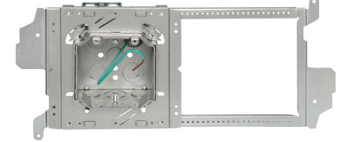
PFTWFA 4Q1075



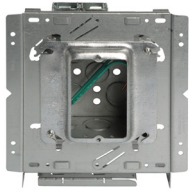
PFTWFA 4Q10275



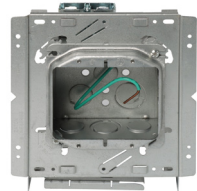
PFTWFA 4Q10AR58



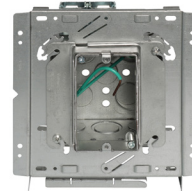
PFTWFA 4Q102AR



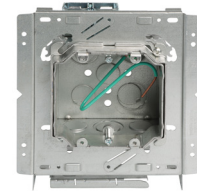
PFTA4 4Q1075



PFTA4 4Q10275



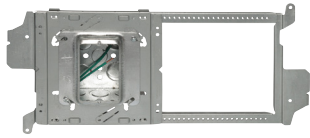
PFTA4 4Q10AR58



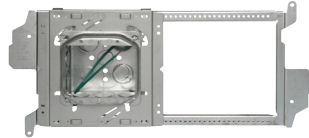
PFTA4 4Q102AR

Catalog #	EAN/UPC code	Description
TP403PF	3078618900028	4" square X 2-1/8" D. box with ground pigtail
TP403G	3078618980403	4" square X 2-1/8" D. box with ground screw installed
TP404PF	3078618900027	4" square X 1-1/2" D. box with ground pigtail
TP404G	3066227901861	4" square X 1-1/2" D. box with ground screw installed
PFTWFA 4Q1075	3066227919215	BBT-WF + BBA - 14.5" - 25" telescoping open bracket w/ alignment plate + TP4Q10PF - 4" SQ. X 2-1/8" D. box with Quick-Lok connector and ground pigtail + TP486 - 3/4" raised single gang
PFTWFA 4Q10275	3066227919216	BBT-WF + BBA - 14.5" - 25" telescoping open bracket w/ alignment plate + TP4Q10PF - 4" SQ. X 2-1/8" D. box w/ Quick-Lok connector and ground pigtail + TP500 - 3/4" raised two gang
PFTWFA 4Q10AR58	3066227919217	BBT-WF + BBA - 14.5" - 25" telescoping open bracket w/ alignment plate + TP4Q10PF - 4" SQ. X 2-1/8" D. box w/ Quick-Lok connector and ground pigtail + ARM158 - adjustable depth single gang
PFTWFA 4Q102AR	3066227919218	BBT-WF + BBA - 14.5" - 25" telescoping open bracket w/ alignment plate + TP4Q10PF - 4" SQ. X 2-1/8" D. Box w/ Quick-Lok connector and ground pigtail + AMR2 - adjustable depth two gang
PFTA4 4Q1075	3066227918264	BBA-4 - double sided stud mount bracket w/ backside support + TP4Q10PF - 4" SQ. X 2-1/8" D. box w/ Quick-Lok connector and ground pigtail + TP486 - 3/4" raised single gang
PFTA4 4Q10275	3066227712612	BBA-4 - double sided stud mount bracket w/ backside support + TP4Q10PF - 4" SQ. X 2-1/8" D. box w/ Quick-Lok connector and ground pigtail + TP500 - 3/4" raised two gang
PFTA4 4Q10AR58	3066227919224	BBA-4 - double sided stud mount bracket w/ backside support + TP4Q10PF - 4" SQ. X 2-1/8" D. box w/ Quick-Lok connector and ground pigtail + ARM158 - adjustable depth single gang
PFTA4 4Q102AR	3066227918263	BBA-4 - double sided stud mount bracket w/ backside support + TP4Q10PF - 4" SQ. X 2-1/8" D. box w/ Quick-Lok connector and ground pigtail + AMR2 - adjustable depth two gang

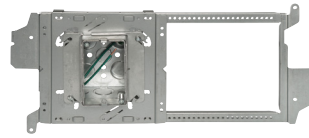
1. Ruff-IN Made-to-Stock - standard assemblies



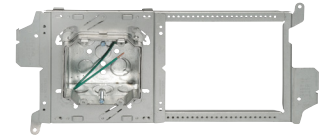
PFTWFA 4D75



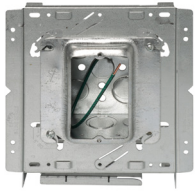
PFTWFA 4D275



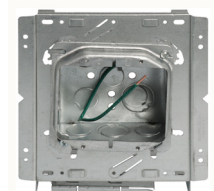
PFTWFA 4DAR58



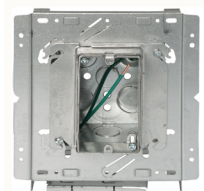
PFTWFA 4D2AR



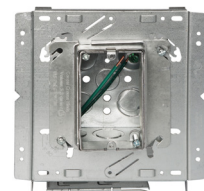
PFTA4 4D75



PFTA4 4D275



PFTA4 4DAR58



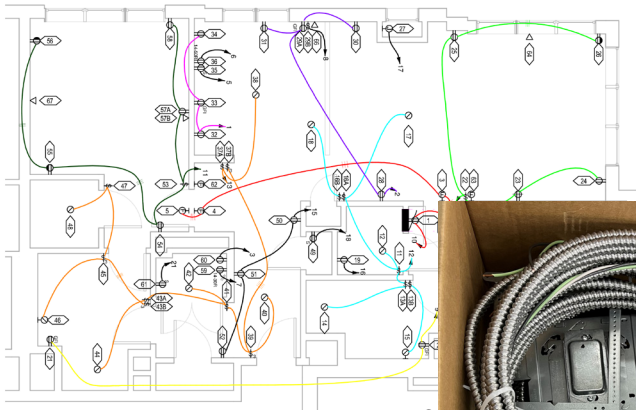
PFTA4 4D2AR

Catalog #	EAN/UPC code	Description
PFTWFA 4D75	3066227920164	BBA-4 - double sided stud mount bracket w/ backside support + TP403PF - 4" SQ. X 2-1/8" D. box and ground pigtail + TP500 - 3/4" raised two gang
PFTWFA 4D275	3066227920165	BBA-4 - double sided stud mount bracket w/ backside support + TP403PF - 4" SQ. X 2-1/8" D. box and ground pigtail + AMR158 - Adjustable single gang mud ring
PFTWFA 4DAR58	3066227920166	BBA-4 - double sided stud mount bracket w/ backside support + TP403PF - 4" SQ. X 2-1/8" D. box and ground pigtail + AMR2 - Adjustable two gang mud ring
PFTWFA 4D2AR	3066227919653	BBT-WF + BBA - 14.5" - 25" telescoping open bracket w/ alignment plate + TP403PF - 4" SQ. X 2-1/8" D. box and ground pigtail + TP486 - 3/4" raised single gang
PFTA4 4D75	3066227918227	BBT-WF + BBA - 14.5" - 25" telescoping open bracket w/ alignment plate + TP403PF - 4" SQ. X 2-1/8" D. box and ground pigtail + TP500 - 3/4" raised two gang
PFTA4 4D275	3066227918328	BBT-WF + BBA - 14.5" - 25" telescoping open bracket w/ alignment plate + TP403PF - 4" SQ. X 2-1/8" D. box and ground pigtail + ARM158 - adjustable depth single gang
PFTA4 4DAR58	3066227920096	BBT-WF + BBA - 14.5" - 25" telescoping open bracket w/ alignment plate + TP403PF - 4" SQ. X 2-1/8" D. Box and ground pigtail + AMR2 - adjustable depth two gang
PFTA4 4D2AR	3066227918591	BBA-4 - double sided stud mount bracket w/ backside support + TP403PF - 4" SQ. X 2-1/8" D. box and ground pigtail + TP486 - 3/4" raised single gang

3. Ruff-IN Engineered-to-Order solutions

How you save with Ruff-IN fully engineered solutions

- Eliminate time-consuming job site “engineering”
- Eliminate spot buying and excessive material handling
- Eliminate job site material “piles” and wasted time searching for pieces and parts
- Reduce material overages and scrap, including expensive wire and cable
- Speed installations and improve project savings



8

Minutes

Estimated time saved per assembly by rough-in crews on a typical hotel over traditional “stick-build” wiring methods

Interested in using Ruff-IN assemblies on your next project? Use the QR code to contact our experts.



Contact us about RUFF-IN pre-fabricated solutions

Questions about RUFF-IN? Interested in using RUFF-IN assemblies on your next project?

Submit the form below and one of our pre-fab experts will connect with you shortly.

Meet our experts >

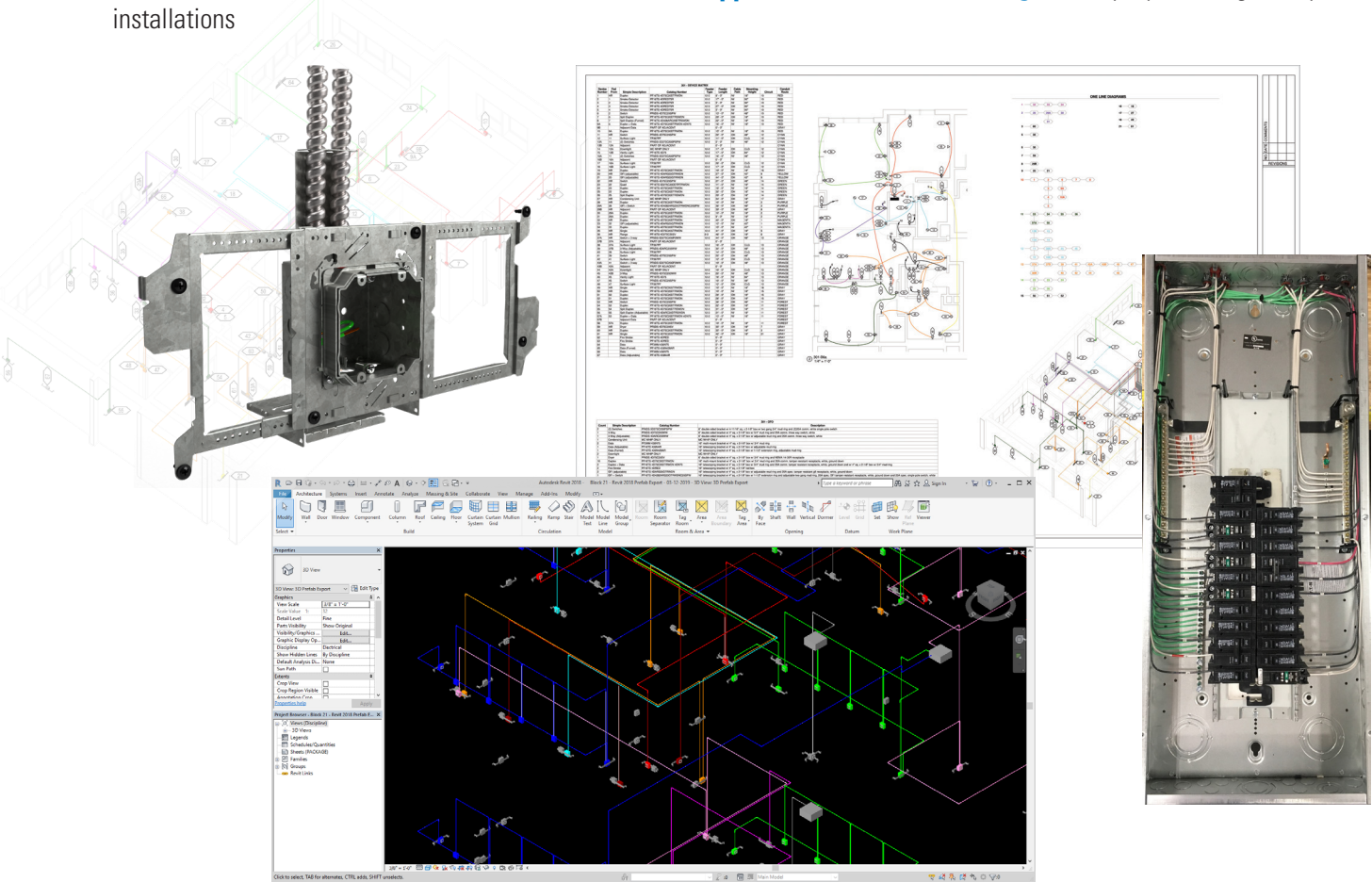


3. Ruff-IN Engineered-to-Order solutions

Engineered-to-Order solutions are used in commercial buildings such as hotels, condominiums, dormitories, retail offices, hospitals and apartments, where the **architectural design is typically repeated from room to room**.

Our experienced engineering team will work with you to plan and design the exact requirements for your next big project. We'll provide:

- **Dedicated project management**, local sales and distribution support
- **Expert recommendations** on the products and assemblies that best fit your project and align to your preferred installation methods
- **Digital integration** – We can incorporate our design data right into your software plans, further streamlining material management and job complexity
- Assemblies include **custom labels** and are **kitted, and shipped with detailed drawings** to simplify handling and speed installations



Experience and agility to manage change

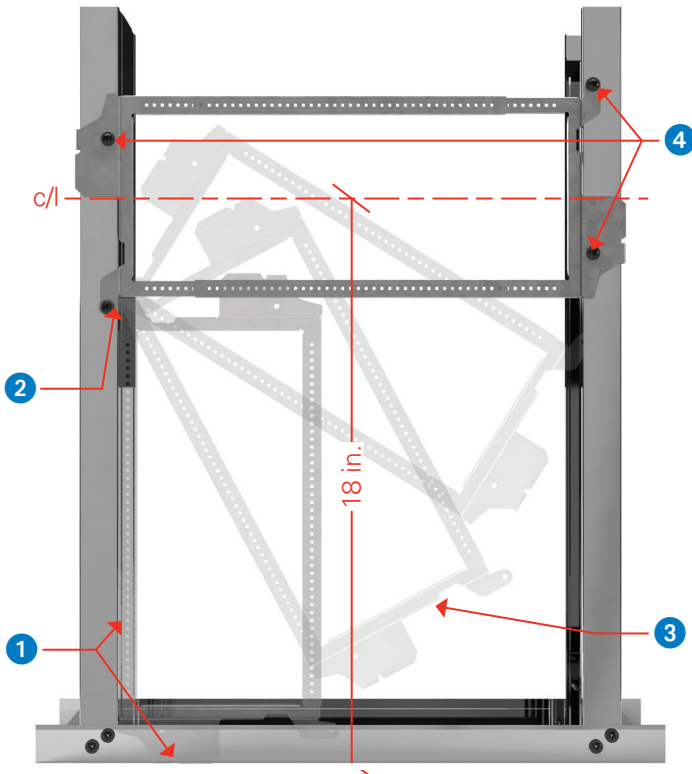
We understand that **unexpected change** occurs on large commercial projects – changes that can come at you fast and are beyond your control. Whatever the obstacle, we'll work with you to make the necessary modifications for future assemblies and keep your project on track and on time.



Ruff-in solution overview

Telescoping brackets

With an auto-height adjustment, the rigid BBT-HF telescoping bracket is quick and easy to install. Simply slide the bracket to the width required and snap both ends of the bracket to the stud and secure with screws.



Telescoping bracket

- 1 With bracket fully collapsed, align next to stud with right side at the floor.
- 2 Install sheet metal screw into pivot point.
- 3 Rotate bracket around the installed screw at the pivot point.
- 4 Expand bracket, snap to stud and affix with screws. Center line will be 18" AFF.

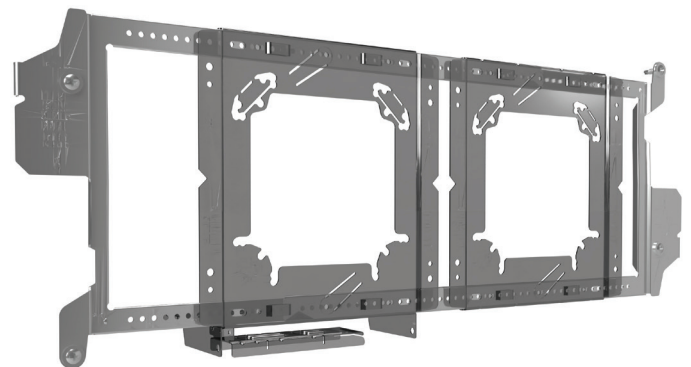


Features

- Easily adjust to accommodate stud widths of 14½" through 25"; a secure fit at all stud spacings
- Available in BBT-16 for 9¼" thru 16½" stud spacings
- Bracket includes an auto-height adjustment feature
- Self-leveling when snapped onto stud; no need for additional leveling tools
- Easy to identify center line on both sides of the bracket
- Snap-on feature works on 1¼" through 1¾" inch width studs
- For studs wider than 1¾" utilize the BBT-WF
- Designed to mount boxes at the exact height on either side of the stud without overlap of adjacent brackets
- Continuous hole pattern allows for positioning of the box mounting bracket anywhere along the length of the bracket
- UL Listed for U.S. and Canada; CSA certified

Patent pending (all parts)

Catalog #	Description	Stud spacing	Box qty.
BBT-HF	Telescoping box bracket	14½" - 25"	25
BBT-WF	Telescoping box bracket for wide flange studs	14½" - 25"	25
BBT-16	Telescoping box bracket	9¼" - 16½"	25



Telescoping bracket with box mounting brackets installed

Ruff-in solution overview

Box mounting brackets

The BBA box mounting bracket and the BBA-4 box mounting bracket with support flange snap easily onto the BBT-HF telescoping bracket.

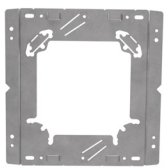


Catalog #	Description	Stud depth	Box qty.
BBA	Box mounting bracket	---	25
BBA-2	Box mounting bracket with back side support	2½"	25
BBA-4	Box mounting bracket with back side support	2½" - 6"	25
BBA-MG	Box mounting bracket for multi-gang and 4 ¹¹ / ₁₆ " boxes	2½" - 3 ⁵ / ₈ "	25

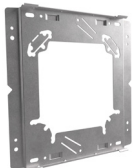
Features

- Marty Mouse™ ears to retain the box when plaster ring is removed
- Rabbit Ears™ to attach a plaster ring for data devices without using a box
- Accepts 4", 4¹¹/₁₆" and 5" square box sizes
- Built-in, snap off back support extension for studs from 2.5" to 6" studs
- No need to measure additional box heights – features interlocking brackets to easily and quickly mount boxes side-by-side
- Faster daisy chain boxes; two brackets mount to the same side of the stud
- Works with standard or adjustable mud rings and Rapid Ring self-adjusting pre-fab ring
- Use with BBT-HF or directly to stud
- BBA-MG bracket supports boxes in ceiling or wall
- BBA-MG UL is listed for multiple gang box
- BBA-MG is ideal for fire alarm speaker strobes and nurse call stations in hospitals
- UL Listed for U.S. and Canada; CSA certified

Patent pending (all parts)



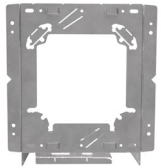
BBA front



BBA back



BBA-2 side



BBA-4 front



BBA-4 back



BBA-MG

Advantage of B-Line series brackets

No need to measure box heights with interlocking brackets

Mounting boxes side-by-side has never been easier.

- Designed to mount two boxes at exactly the same height on either side of the stud.

No box needed for DataComm accessories

Innovative rabbit ears make it possible.

- Rabbit Ears and mud ring allow data communication devices, such as card readers, to be attached to the bracket without the use of a box.

One SKU mounts multiple box sizes - fewer parts to handle on the job-site

Built-in back support accessory for job-site flexibility.

- Bracket accepts 4", 4¹¹/₁₆", and 5" boxes.
- Bracket extender easily snaps off of the bracket to snap into place as a back support for up to 6" stud depths.

Faster daisy chain boxes

Faster installs with B-Line series solutions.

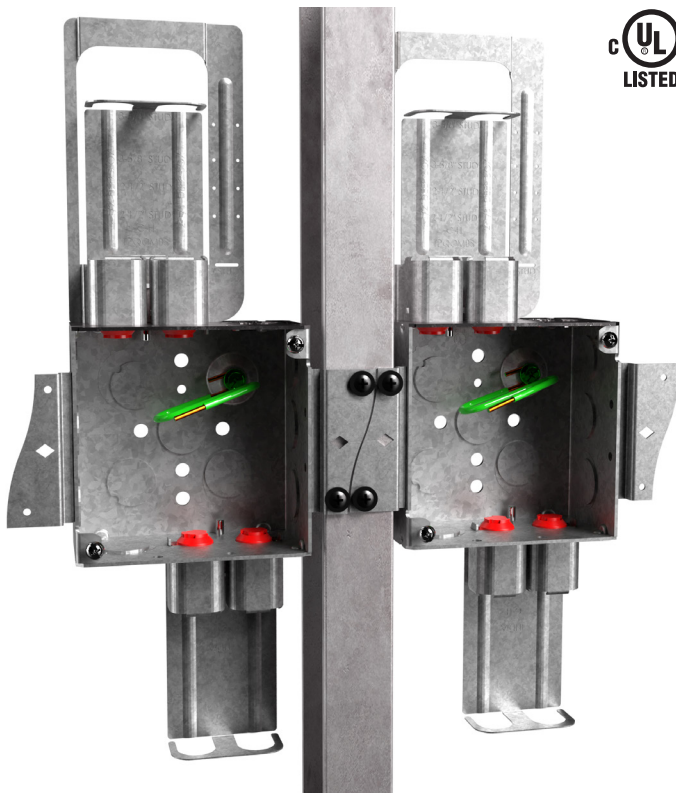
- Two brackets mount to the same side of a stud at the same height.



Eaton.com/BBT-HF

Ruff-in solution overview

Quick-Lok outlet boxes and assemblies



More space and options

- UL Listed
- Large 44 cubic inch capacity for the entire 4^{11/16}" square offering
- 33.3 cubic inch capacity for entire 4" square offering
- Extra 1/2" and 3/4" eccentric knockouts available on select models
- Ground bump available on all models
- Pre-installed pigtail provided as an option on all models

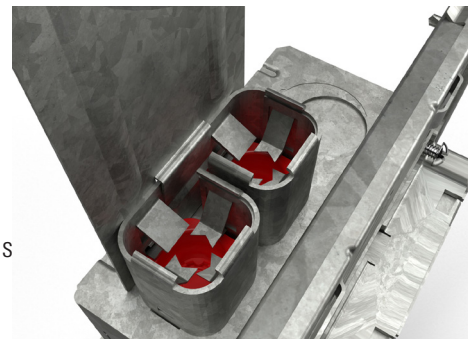


Easy to mount

- Patented S-curved shape allows for two brackets to be interlocked and mounted side by side on same stud
- Available with single or double sided options
- Assemblies without flat face bracket can be installed in conjunction with B-Line series stud mounting brackets

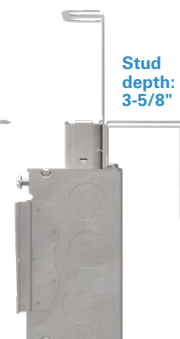
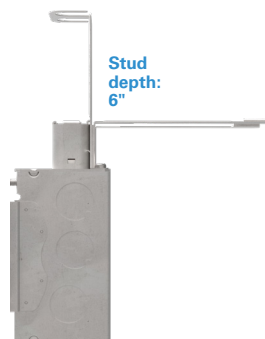
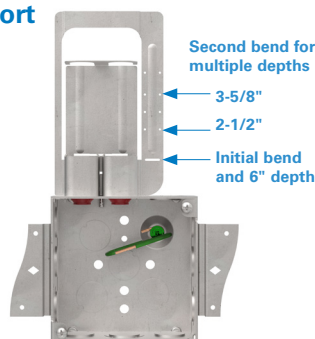
Patented pre-installed external connectors

- 4" square:
(2) top only cable entries or (2) top & (2) bottom cable entry options
- 4-11/16" square:
(2-4) top only cable entries or (2-4) top & (2-4) bottom cable entry options
- Extra 1/2" and 3/4" eccentric knockouts available on select models
- Integral insulator and easily removable knockout plug



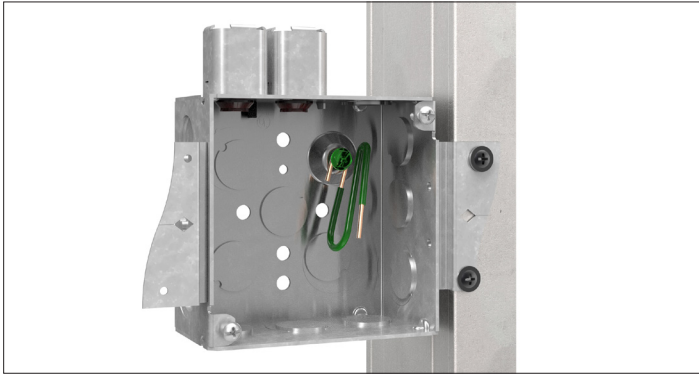
Cable management & support

Patented field installable cable management & backside support accessories

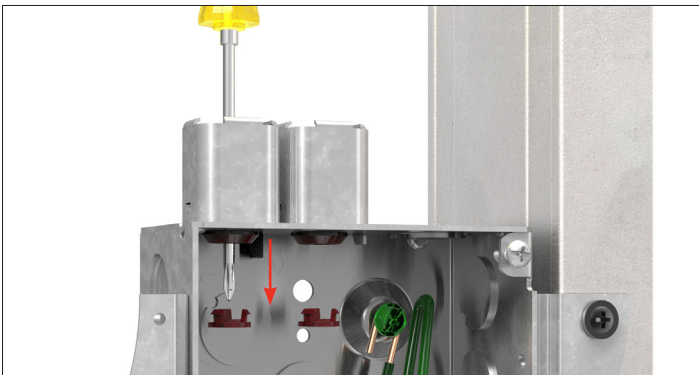


Ruff-in solution overview

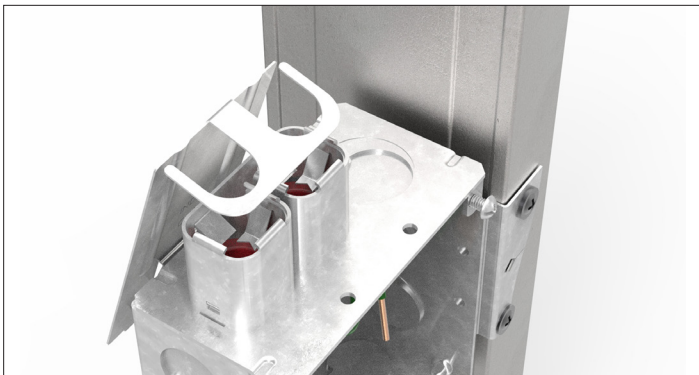
Quick-Lok outlet boxes and assemblies



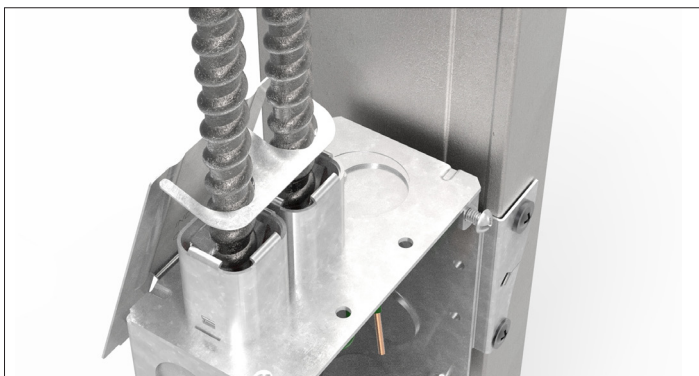
Step 1. Mount box to stud.



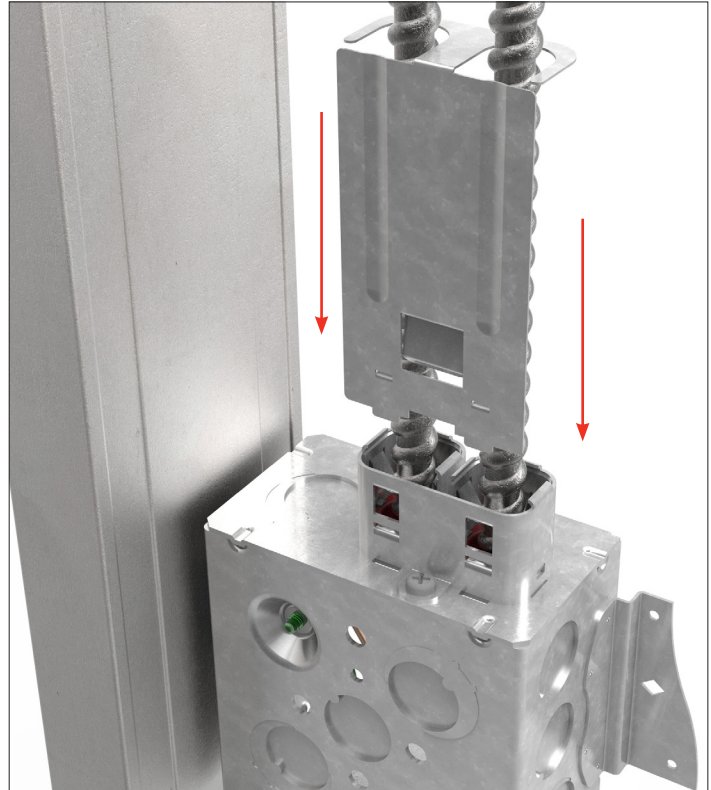
Step 2. Pop out the plug by inserting a screwdriver through the top of the Quick-Lok connector in the location where cable will be installed. If you accidentally pop out too many plugs, you can reinstall.



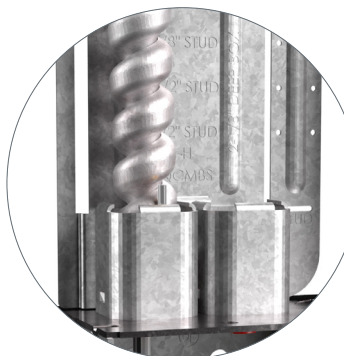
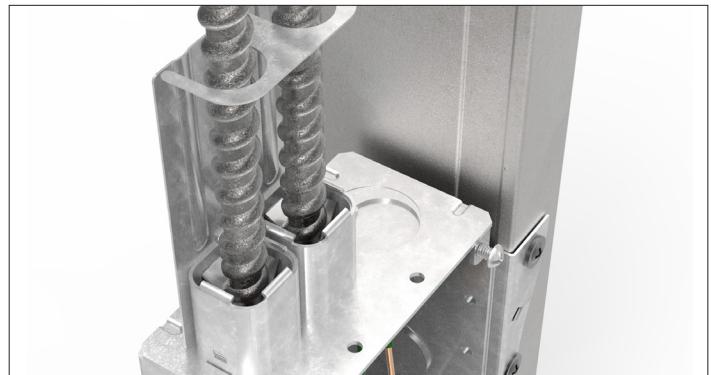
Step 3. Align the cable openings on the cable management with the top of the Quick-Lok connector.



Step 4. Insert cable through the cable management and Quick-Lok connector simultaneously.



Step 5. Slide cable management up and snap into the box and Quick-Lok connector after all cables are installed.



Note:

For type MC-1 cable (*Southwire MCAP, Encore Smartground, or similar*), the bare aluminum ground should be wrapped against the outside jacket and protrude from the top of the Quick-Lok connector $1/8$ ". Any excess will be cut off.

Eaton.com/Quick-Lok



Ruff-IN components - brackets and supports

Box mounting brackets

Quick installation

- BBA easily snaps onto BBT telescoping brackets and accepts 4", 4¹¹/₁₆" and 5" box sizes
- Marty Mouse ears retain the box when plaster ring is removed
- Rabbit Ears to attach a plaster ring for data devices without using a box

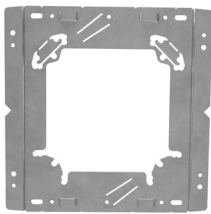
Application versatility

- BBA-2 and BBA-4 come with backside support; both can be stud mount or installed in the BBT bracket
- BBA-2 is designed specifically for 2¹/₂" deep studs without modification
- BBA-4 features built-in, snap off back support extension for studs from 2.5" to 6"
- No need to measure additional box heights – features interlocking brackets to easily and quickly mount boxes side-by-side
- Faster daisy chain boxes; two brackets mount to the same side of the stud
- Works with standard or adjustable mud rings

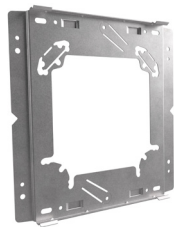
BBA-MG features

- Bracket supports boxes in ceiling or wall
- UL Listed for multiple gang box
- Ideal for fire alarm speaker strobes and nurse call stations in hospitals

Patent pending (all parts)



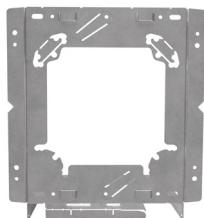
BBA front



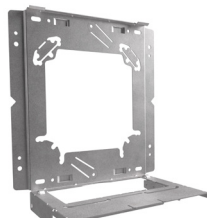
BBA back



BBA-2 side



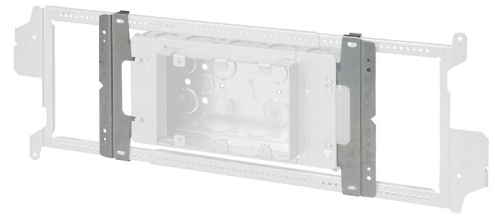
BBA-4 front



BBA-4 back



BBA-MG



BBA-MG shown on 3 gang PFTHFAMG-630653

Catalog #	Description	Stud spacing	Box qty.
BBA	Box mounting bracket	—	25
BBA-2	Box mounting bracket with backside support	2 ¹ / ₂ "	25
BBA-4	Box mounting bracket with backside support	2 ¹ / ₂ " - 6"	25
BBA-MG	Box mounting bracket for multi-gang and 4 ¹¹ / ₁₆ " boxes	2 ¹ / ₂ " - 3 ⁵ / ₈ "	25



Eaton.com/BBT-HF

Ruff-IN components - brackets and supports

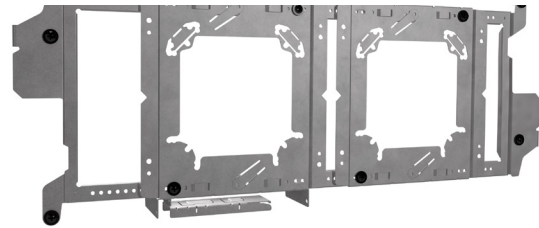
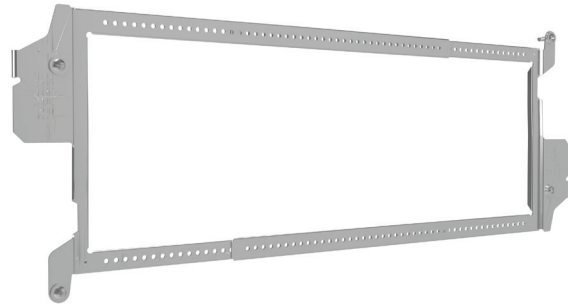
Hands-free telescoping brackets

With an auto-height adjustment, the rigid BBT-HF telescoping bracket is quick and easy to install. Simply slide the bracket to the width required and snap both ends of the bracket to the stud and secure with screws.

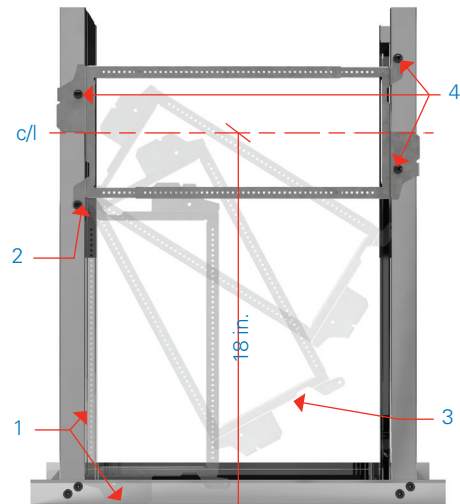
- Easily adjust to accommodate stud widths of 14½" through 25"; a secure fit at all stud spacings
- Bracket includes an auto-height adjustment feature
- Self-leveling when snapped onto stud; no need for additional leveling tools
- Easy to identify center line on both sides of the bracket
- Snap on feature works on 1¼" through 1¾" inch width studs
- For studs wider than 1¾" utilize the BBT-WF
- Designed to mount boxes at the exact height on either side of the stud without overlap of adjacent brackets
- Continuous hole pattern allows for positioning of the box mounting bracket anywhere along the length of the bracket

1. With bracket fully collapsed, align next to stud with right side at the floor.
2. Install sheet metal screw into pivot point.
3. Rotate bracket around the installed screw at the pivot point.
4. Expand bracket, snap to stud and affix with screws. Center line will be 18" AFF.

BBT-HF



Telescoping bracket with BBA-4 and BBA added

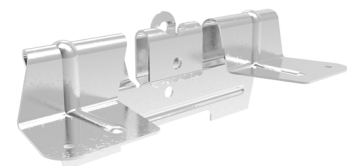
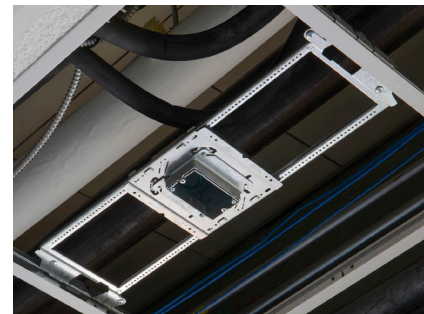


Catalog #	Description	Stud spacing	Box qty.
BBT-HF	Telescoping box bracket	14½" - 25"	25
BBT-WF	Telescoping box bracket for wide flange studs	14½" - 25"	25

Patent pending (all parts)

Ceiling clips for BBT brackets

- Installs onto BBT-WF with two screws for installation into T-Grid ceilings
- Box attached with BBA or BBA-4 alignment bracket
- Wide support prevents bracket from rocking, and rigidity of BBT-WF reduces pressure on the ceiling tile
- Sheet metal screw location and loop hole for support drop wire aids compliance with NEC 314.23 (D)
- Install fire alarm boxes, nurse call, lighting controls, etc. into the ceiling grid using the same brackets installed in the wall, reducing overall SKU count
- Install multiple boxes into the same ceiling tile
- Static load capacity 50lbs.
- Available for field or prefab shop assembly, or preassembled on a BBT-WF bracket with box and cover preinstalled



The combination of the BBT-WF and BBT-TG bracket is not listed to support a luminaire.

UPC/part number	Catalog #	Description	Box qty.
79903885065	BBT-TG	Ceiling clips for BBT brackets	100

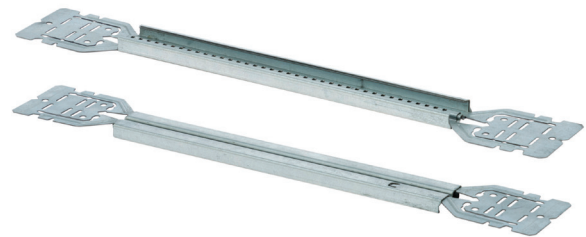
Ruff-IN components - brackets and supports

Telescoping brackets

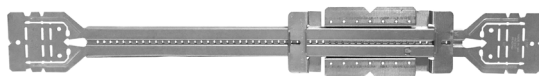
- Completely adjustable, fits a range of stud spacing
- Mounts 1½", 2⅛", 2½", and 2⅓⅓" deep boxes
- Increased rigidity through center groove design
- Only two screws required to mount 1½" and 2⅛" box depths
- Pre-punched screw holes provide for easy box installation
- Bar is marked with a scale for stud spacing
- Finish: pre-galvanized



BB2-16T



BB2-24T



BB2-24TS

UPC/part number	Catalog #	Stud spacing	Box qty.
79903863001	BB2-16T	11" to 18"	50
79903863002	BB2-24T	15½" to 26"	50
78205138614	BB2-16TS	11" to 18"	20
78205138628	BB2-24TS	15" to 26"	20

Patent pending

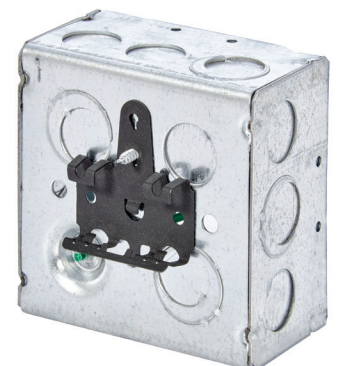
Box mounting clip

- Allows for pre-fabrication of the electrical box prior to installing the box onto the bracket
- Tool-less, simply installs by snapping onto the bracket and requires no hardware to secure



UPC/part number	Catalog #	Description	Box qty.
79903863003	BB2TSC	Box mounting	100

Patent pending

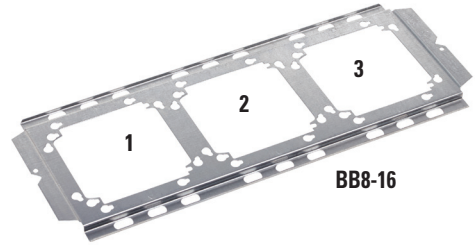
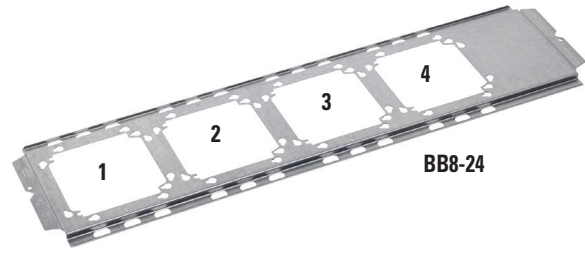


Shown mounted on box

Ruff-IN components - brackets and supports

Multiple box mounting brackets

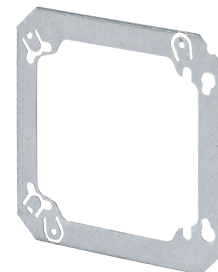
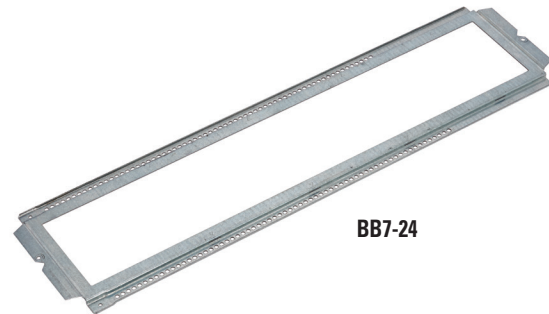
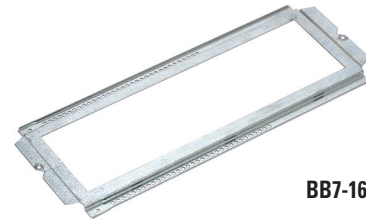
- Increased strength and rigidity help withstand the stress of drywall installation
- Supports most US & Canadian boxes and plaster rings 4" square and 4¹/₁₆" square
- Compatible with adjustable mud rings (see page 26)
- Available factory assembled as part of the Ruff-IN pre-fab line with box(es), mud ring(s), and ground wire(s)
- Finish: pre-galvanized
- Patent pending



UPC/part number	Catalog #	Stud size	Box qty.
78101102898	BB8-16	16"	25
78101102900	BB8-24	24"	25

Open box mounting brackets

- Open box support allows for adjustability of box position between studs
- Supports most U.S. and Canadian boxes and/or plaster rings 4" square, 4¹/₁₆" square, 5" square, and multi-gang boxes
- Fits up to 1¹/₂" wide studs 16" to 24" on center
- Compatible with adjustable mud rings (see page 26)
- Field cut to adjust to non-standard stud spacings
- Stamped markings at 1/4", 1/2", and 1" increments to allow the installer to easily locate the desired box position
- Available factory assembled as part of the Ruff-IN pre-fab line with box(es), mud ring(s), and ground wire(s)
- BB7AP alignment plate centers and secures box to the bracket, allows for easy adjustment of box location
- Finish: pre-galvanized
- Patent pending



UPC/part number	Catalog #	Stud size	Box qty.
78101145325	BB7-16	16"	25
78101145328	BB7-24	24"	25
79903859494	BB7AP	—	100

BB7AP

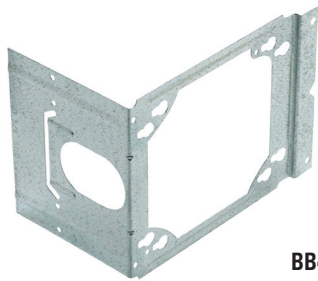
Ruff-IN components - brackets and supports

Single sided box support brackets

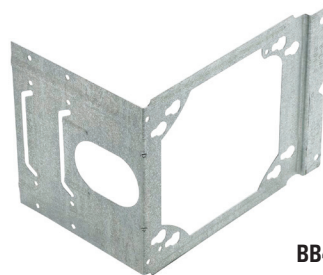
- Improved far-side support prevents box movement in wall cavity
- Adjustable far-side supports designed to help reduce labor
- Brackets may be piggy-backed in series
- Not recommended for pre-installed wiring devices. See BB70 (page 21) for an improved pre-fab assembly solution



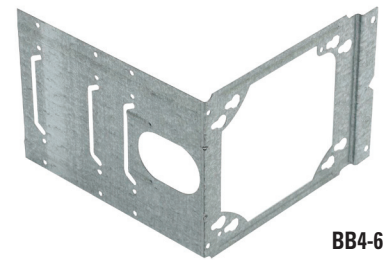
UPC/part number	Catalog #	Stud size	Box qty.
78101118190	BB4-23	3½" & 2½"	100
78101118200	BB4-4	4", 3½" & 2½"	100
78101118202	BB4-6	6", 5½", 3½", 2½"	100



BB4-23



BB4-4



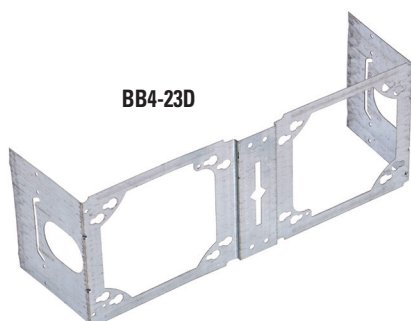
BB4-6

Two gang double sided support brackets

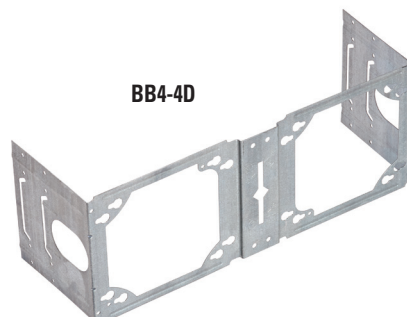
- Improved far-side support prevents box movement in wall cavity
- Adjustable far-side supports designed to help reduce labor
- Ruff-IN assemblies available with box, plaster ring and ground wire



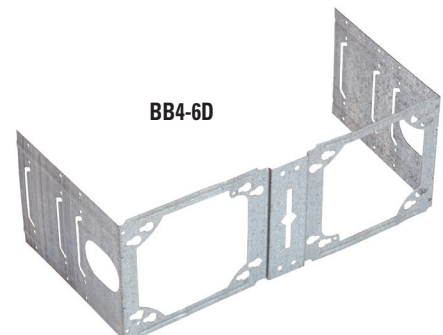
UPC/part number	Catalog #	Stud size	Box qty.
79903848375	BB4-23D	3½" & 2½"	50
79903848376	BB4-4D	4", 3½" & 2½"	50
79903848377	BB4-6D	6", 5½", 3½", 2½"	50



BB4-23D



BB4-4D



BB4-6D

Ruff-IN components - brackets and supports

Box support brackets

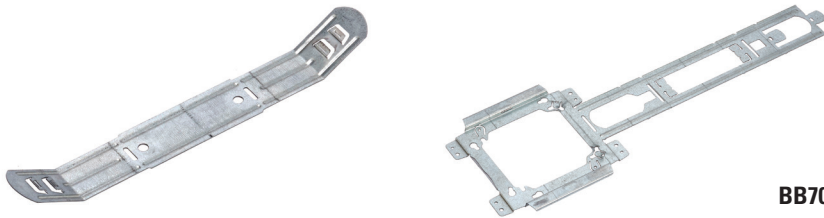
- Interlocking wrap-around design provides extra rigidity
- Compatible with adjustable plaster rings (see page 26)
- Adjustable for varying stud depths (2½" to 6"); simply bend bracket for 2½", 3½" and 4" depths
- For 5½" depth, snap the BB70E into the next notch on the bracket side
- Integral mounting tabs for attaching plaster rings
- Multiple brackets may be ganged together
- Available factory assembled as part of the Ruff-IN pre-fab line with box, mud ring, and ground wire
- Finish: Pre-galvanized



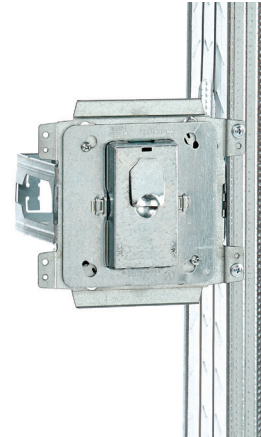
UPC/part number	Catalog #	Stud size	Box qty.
79903856399	BB70	2½" - 4"	50
79903856400	BB70*	5½" - 6"	50

Patent #944236B2

*BB70E (Sold separately, must be used with BB70)



BB70



Can be used with BBFS18 (floor stand); See page 22

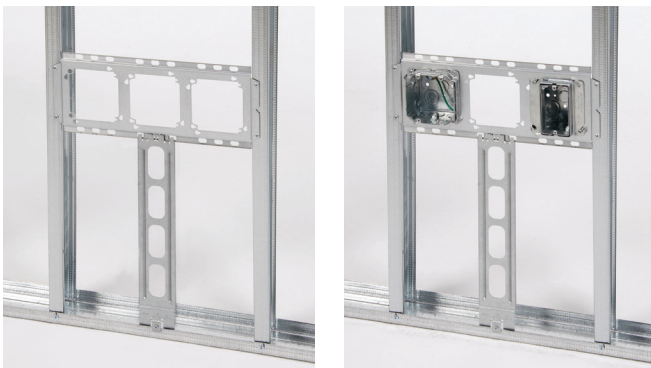
Floor stand box supports

- BBFS-18 floor stand ensures consistent box height and eliminates need to measure for proper install height
- Can be used with BB7 and BB8 brackets
- Finish: pre-galvanized



BBFS-18

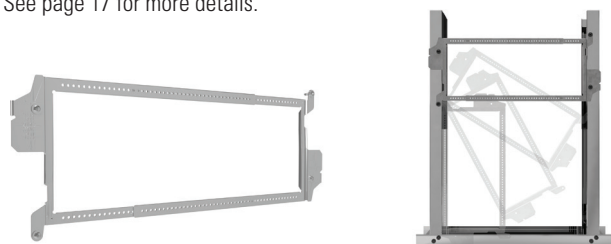
UPC/part number	Catalog #	Description	Box qty.
79903851597	BBFS-18	Floor stand	25



BBFS-18 Installed (can be used with BB7 or BB8 brackets)

Productivity and part reduction opportunity!

Try the auto height on the BBT-HF instead of floor stands - less parts. See page 17 for more details.



Ruff-IN components - brackets and supports

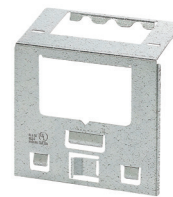
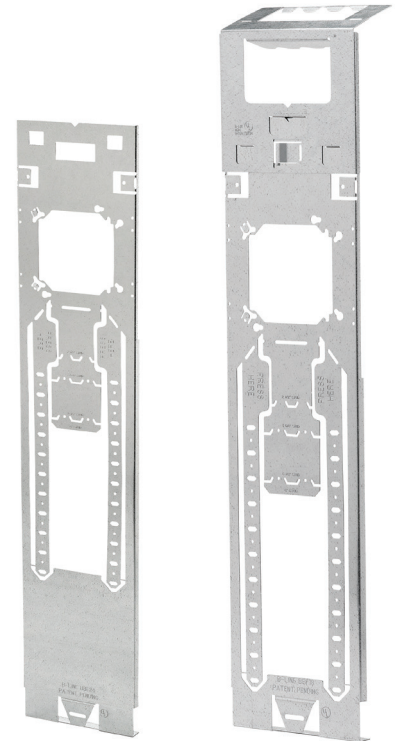
Floor mount box supports

- BBF floor stand provides the most rigid support in the industry
- Far-side support accommodates 6", 5½", 3⅝", and 2½" stud depths
- Fold-out tab built-in to attach floor stand to stud if desired
- Integral "wings" provide rigid support when floor stand is mounted between studs
- Optional cable containment clip securely attaches to floor stand without hardware
- Patented Marty Mouse ears enable boxes to be secured with or without the plaster rings
- Finish: pre-galvanized



UPC/part number	Catalog #	Stud size	Box qty.
78205152944	BBF15	15" Floor stand	25
78205152945	BBF18	18" Floor stand	25
78205152946	BBF24	24" Floor stand	25
78205152947	BBFC	Cable containment clip	25
78205152948	BBF15C	15" Floor stand with cable containment clip	25
78205152949	BBF18C	18" Floor stand with cable containment clip	25
78205152950	BBF24C	24" Floor stand with cable containment clip	25

Patent # 5595362
7956285B2



BBFC

BBF24

BBFxxC

Floor mounted box support

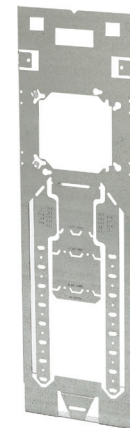
- Provides support for electrical box from floor track or concrete forms
- 18" length with break-away feature for 12" or 16" box mounting
- Finish: pre-galvanized



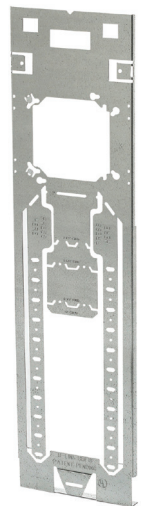
UPC/part number	Catalog #	Description	Box qty.
78101103623	BB-18	Floor mounted box support	50



BB-18



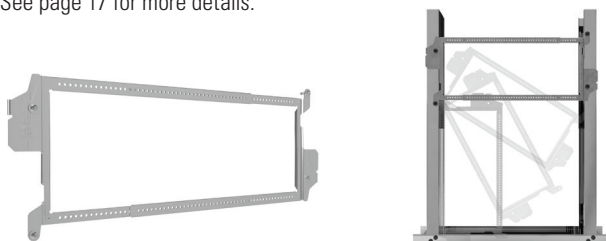
BBF15



BBF18

Productivity and part reduction opportunity!

Try the auto-height on the BBT-HF instead of floor stands - less parts. See page 17 for more details.



Ruff-IN components - brackets and supports

Ceiling hangers

- Supports octagonal or square boxes on 24" span
- Allows for flush mounting or 3/4" offset for plaster ring
- Includes BB27 box mounting clip with screw
- Load capacity: 20 lbs.
- For additional support, attach dropwire to BB27 box mounting clip
- Finish: pre-galvanized



UPC/part number	Catalog #	Description	Box qty.
78101118080	BA12	Box hanger	50



Ceiling assemblies

- Box support bracket, outlet box and cover included
- Outlet boxes feature installed insulated solid ground wire with ground screw
- Finish: pre-galvanized



PFBG812-S18-W2-MC3-525568-BG812-BG812



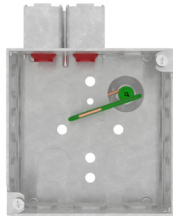
PFBRC51-S18-W2-5Q11568

UPC/part number	Catalog #	Description	Ground pigtail	Depth	Cubic in.	Box qty.
3066227919609	PFBG812-S18-W2-MC3-525568-BG812-BG812	BG812-S18-MC3 bracket with TP525PF box and TP568 cover	Yes	2 1/8"	44	15
3066227921089	PFBRC51-S18-W2-5Q11568	BRC51-S18-W2 bracket with TP5Q11PF box and TP568 cover	Yes	2 1/8"	66	15

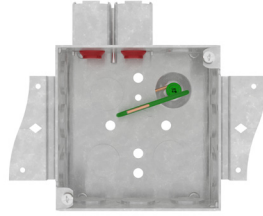
Ruff-IN components - boxes and covers

Quick-Lok outlet boxes

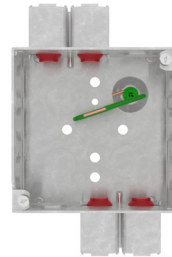
- Large 44 cubic inch capacity for the entire 4¹¹/₁₆" square offering
- 33.3 cubic inch capacity for entire 4" square offering
- Extra 1/2" and 3/4" eccentric knockouts available on select models
- Ground bump available on all models
- Pre-installed pigtail provided as an option on all models
- Listed for use with fire pad box inserts, great for prefabrication!



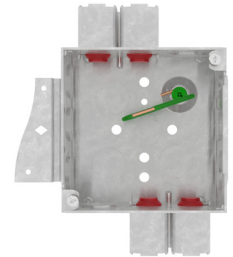
TP4Q10PF



TP4Q10MPF

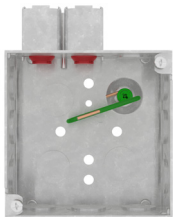


TP4Q11PF

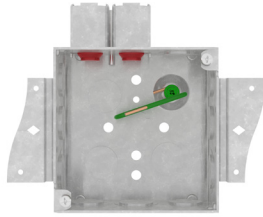


TP4Q11HPF

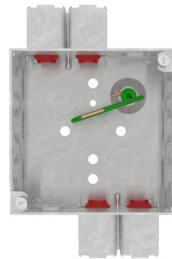
UPC/part number	Catalog #	Stud spacing
66227711495	TP4Q10PF	(2) cable entries on top, 8" solid #12 ground wire
66227711498	TP4Q10MPF	(2) cable entries on top, double sided bracket, 8" solid #12 ground wire
3066227711506	TP4Q10CBMPF	(2) cable entries on top, double sided bracket, TPQCMBS cable management backside support, 8" solid #12 ground wire
66227711508	TP4Q11PF	(2) cable entries on top, (2) cable entries on bottom, 8" solid #12 ground wire
66227711510	TP4Q11HPF	(2) cable entries on top, (2) cable entries on bottom, single sided bracket, 8" solid #12 ground wire



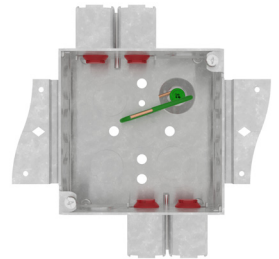
TP5Q10PF



TP5Q10MPF



TP5Q11PF



TP5Q11MPF

UPC/part number	Catalog #	Stud spacing
66227711527	TP5Q10PF	(2) cable entries on top, 8" solid #12 ground wire
66227711528	TP5Q10MPF	(2) cable entries on top, double sided bracket, 8" solid #12 ground wire
66227711533	TP5Q11PF	(2) cable entries on top, (2) cable entries on bottom, 8" solid #12 ground wire
66227711535	TP5Q11MPF	(2) cable entries on top, (2) cable entries on bottom, double sided bracket, 8" solid #12 ground wire
66227711539	TP5Q20PF	(4) cable entries on top, ground bump, solid #12 ground wire
66227711542	TP5Q20MPF	(4) cable entries on top, double sided bracket, 8" solid #12 ground wire

Cable management & support

- Patented field installable cable management & backside support accessories

Catalog #	Description
TPQCMBS	Cable management and backside support
TPQCM	Cable management



TPQCMBS



TPQCM



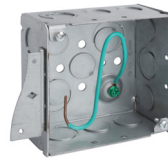
Eaton.com/Quick-Lok

Ruff-IN components - boxes and covers



TP4 4" square outlet boxes

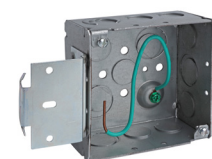
- 33.3 cubic inch capacity for entire 4" square offering
- Ground bump available on all models
- Pre-installed pigtail provided as standard



TP4HPF



TP4MPF



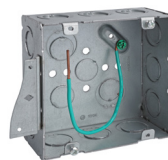
TP4MSBPF

Cat. #	Bracket	Description	Grounding method	Knockouts		Unit qty.	Wt. lbs. per 100
				Sides	Bottom		
TP4H	"S"	Welded	Ground bump	8 - 1/2", 4 - 1/2" + 3/4" E	2 - 1/2", 2 - 1/2" + 3/4" E	25	92
TP4MPF*	"S"	Welded	Ground bump	8 - 1/2", 4 - 1/2" + 3/4" E	2 - 1/2", 2 - 1/2" + 3/4" E	25	96
TP4MSB	MSB	Welded	Ground bump	6 - 1/2", 3 - 1/2" + 3/4" E	2 - 1/2", 2 - 1/2" + 3/4" E	25	98
TP4CS	-	Welded	Ground bump	8 - 1/2", 4 - 1/2" + 3/4" E	2 - 1/2", 2 - 1/2" + 3/4" E	25	88

*cUL Listed.

TP5 4 11/16" square outlet boxes

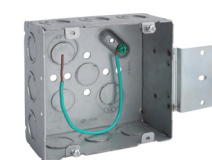
- 42.0 cubic inch capacity
- Ground bump available on all models
- Pre-installed pigtail provided as standard



TP5HPF



TP5MPF



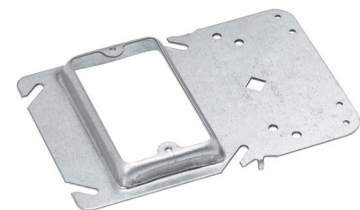
TP5MSBPF

Cat. #	Bracket	Description	Grounding method	Knockouts		Unit qty.	Wt. lbs. per 100
				Sides	Bottom		
TP5H	"S"	Welded	Ground bump	12 - 1/2" + 3/4" C	2 - 1/2", 2 - 1/2" + 3/4" E	25	111
TP5MPF*	"S"	Welded	Ground bump	12 - 1/2" + 3/4" C	2 - 1/2", 2 - 1/2" + 3/4" E	25	115
TP5MSB	MSB	Welded	Ground bump	9 - 1/2" + 3/4" C	2 - 1/2", 2 - 1/2" + 3/4" E	25	120
TP5HS	-	Welded	Ground bump	12 - 1/2" + 3/4" E	1 - 1/2", 2 - 1/2" + 3/4" E	25	109

*cUL Listed.

Uni-Mount™ box supports

- Provides a secure box support and features a built-in plaster ring
- Rigid bracket design eliminates the need for far-side support
- Guide tabs ensure alignment on studs
- Ruff-IN assemblies available with box, plaster ring and ground wire
- Fire stop pad can be pre-installed in boxes if desired
- Not recommended for pre-installed wiring devices; (see BB70 for an improved pre-fab assembly solution)



TP31000



TP35000

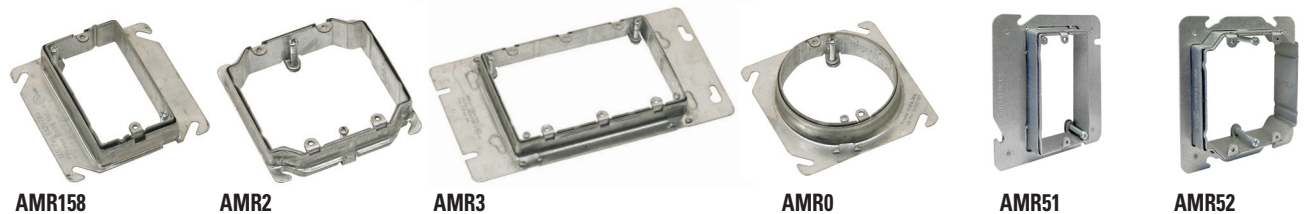
UPC/part number	Catalog #	Description	Box qty.
3078618930000	TP30000	1/2" raise	50
3078618931000	TP31000	5/8" raise	50
3078618932000	TP32000	3/4" raise	50
3078618935000	TP35000	1/2" raise	50
3078618936000	TP36000	5/8" raise	50
3078618937000	TP37000	3/4" raise	50



Ruff-IN components - boxes and covers

Adjustable mud rings

- Adjustable mud ring can be used with 4" square and 4¹¹/₁₆" square, 2¹/₈" deep boxes and fits a range of drywall thicknesses
- Mud ring can be adjusted after sheet rock, mud, or tile is installed without removing the wiring devices
- Helps reduce labor and requirements for multiple products of varying wall thicknesses



UPC/part number	Catalog #	Description	Depth	Box qty.
3066227705986	AMR158	One device adjustable ring for 4" square outlet boxes	5/8" - 1 1/4"	50
3066227701195	AMR1	One device adjustable ring for 4" square outlet boxes	3/4" - 1 1/2"	50
3066227701196	AMR2	Two device adjustable ring for 4" square outlet boxes	5/8" - 1 1/2"	50
3066227705985	AMR3	Three device adjustable ring for 4" square outlet boxes	3/4" - 1 1/2"	50
3066227705987	AMR0	Round device adjustable ring for 4" square outlet boxes	3/4" - 1 1/2"	50
3066227717122	AMR51	One device adjustable ring for 4 ¹¹ / ₁₆ " square outlet boxes	5/8" - 1 1/4"	50
3066227717123	AMR52	Two device adjustable ring for 4 ¹¹ / ₁₆ " square outlet boxes	5/8" - 1 1/2"	50

Mud rings

- Mud rings can be used with 4" square boxes and fits a range of drywall thicknesses



UPC/part number	Catalog #	Description	Depth	Box qty.
3078618910484	TP484	One device ring	1/2"	50
3078618910489	TP489	One device ring	5/8"	50
3078618910486	TP486	One device ring	3/4"	50
3078618910488	TP488	One device ring	1"	50
3078618910490	TP490	One device ring	1 1/4"	50
3078618910498	TP498	Two device ring	1/2"	50
3078618910499	TP499	Two device ring	5/8"	50
3078618910500	TP500	Two device ring	3/4"	50
3078618910502	TP502	Two device ring	1"	50
3078618910501	TP501	Two device ring	1 1/4"	25

Ruff-IN components - accessories

Metal protector plates

- Protects box contents from drywall mud, paint and debris
- Protector plates provided with all wiring device assemblies
- Can be installed on plaster rings with or without pre-installed wiring devices
- Helps protect pre-installed wiring devices from damage during drywall installation
- Design transmits force of drywall installation to the plaster ring - not the wiring device
- Domed plate for toggle switches allows for clearance between the plate and switch, and helps eliminate scratching of the devices
- Two protector plates are required for two device plaster rings

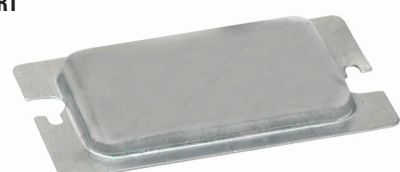
BPS1



BPS2

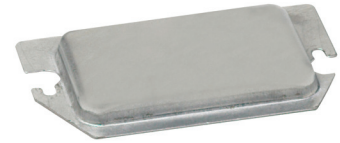


BPR1



UPC/part number	Catalog #	Devices	Plaster ring style	Box qty.
78205149197	BPR1	Receptacles, GFCI, decorator, none	One device	50
78205138937	BPS1	Toggle switches	One device	50
78205149199	BPR2	Receptacles, GFCI, decorator, none	Two device	50
78205138938	BPS2	Toggle switches	Two device	25

BPR2



Wiring devices



Today's commercial buildings must be energy-efficient, intelligent and provide a safe, productive and inviting environment. Whether it's turning lights ON/OFF when motion is detected or controlling receptacle outlets to minimize energy use, Arrow Hart's specification grade commercial wiring devices are engineered with unique features that can help reduce installation time, provide reliable performance and save energy.

Commercial switches

- Designed to save time and labor, our wide range of commercial grade switches include traditional toggle and decorator styles that are thoroughly tested to ensure reliable electrical and mechanical performance.

Commercial specification grade receptacles

- Commercial grade receptacles are engineered for safe and reliable performance while providing installation efficiency to help finish the job on time.
- Straight blade receptacles are UL 498 and Federal Specification WC-596 listed for maximum durability.
- The dual and half controlled receptacles feature a NEMA approved controlled symbol for easy identification of a controlled circuit, meeting the latest NEC® requirements and CA Title 24 and ASHRAE 90.1 Energy Efficiency standards.

Ruff-IN components - accessories

Concrete box clamp

- Secures electrical boxes in concrete block
- Quickly installs with no tools required
- Works for single or double gang boxes
- Completely re-usable
- Able to be used with flush mount rings or penetrating rings when block wall will be covered

UPC/part number	Catalog #	Description	Box qty.
79903863423	BB-4SCBC	Concrete box clamp	25



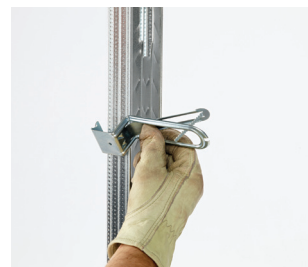
Cable support

- Can be push mounted to stud for positioning
- Stiffening ribs and more material for rigid design
- Zip tie locking tab allows trouble-free securing of cables
- Attaches to stud using only one screw
- Allows cables to be positioned a minimum of 1¼" from face of stud as required by NEC Article 300.4(D)

UPC/part number	Catalog #	Description	Box qty.
79903843761	BRC6M	Cable support	100

Note: Canadian applications are limited to wood studs only.

Cable type	Size	Cable capacity
Non-Metallic cable (NM)	14/2, 14/3, 12/2, 12/3, 10/2, 10/3, 8/2 with ground	8
	8/3, 6/2 with ground	6
Metal Clad cable (MC)	14/2, 14/3, 14/4, 12/2, 12/3, 12/4, 10/2 with ground	6
	10/3, 10/4 with ground	5
Armored Cable (AC)	14/2, 14/3, 14/4, 12/2, 12/3, 12/4, 10/2 with ground	6
	10/3, 10/4 with ground	5
Flexible Cable (BX)	5/16"	6
	3/8"	5



Push support onto stud



Support stays mounted to stud while securely attached with one screw



Insert cables to be secured



Once cables are inserted, wrap zip-tie around the end of the support to secure the cables

Ruff-IN components - accessories

Cable support

- For use on wood or metal stud
- Allows cables to be positioned a minimum of 1 1/4" from face of stud as required by NEC Article 300.4(D)



UPC/part number	Catalog #	Description	Box qty.
79903862843	BRCJ	Cable support	100

Surface	Cable type	Size	Cable capacity
Wood	Non-Metallic cable (NM)	14/2, 14/3, 12/2, 12/3, 10/2, 10/3, with ground	Max 6
		8/2, 6/2 with ground	Max 4
Metal stud	Metal Clad cable (MC)	14/2, 14/3, 14/4, 12/2, 12/3, 12/4, 10/2, 10/3, 10/4 with ground	Max 4
Furring strip & hat channel	Armored Cable (AC)	14/3, 14/4, 12/2, 12/3, 12/4, 10/2, 10/3, 10/4 with ground	Max 4
Furring strip & hat channel	Flexible Cable (BX)	5/16" & 3/8"	Max 4
Metal stud (Canada only)	Non-Metallic sheathed cable	14/2, 14/3, 12/2, 12/3, 10/2, 10/3, with ground	Max 4

Notes: Read safety/installation instruction sheet in packages before use.

Heavy duty box hanger

- Supports octagonal or square boxes on 24" span
- Bendable ends mount 1 1/2" or 2 1/8" deep boxes without tools
- Self-centering feature positions box on center
- Includes BA50C4T box mounting clip
- Ultimate static load capacity: 50 lbs. (without dedicated dropwire)
- Static load capacity: 70 lbs. (with dedicated dropwire) 35 lbs. Canada
- Finish: pre-galvanized



BA50



BA50D



BA50A

UPC/part number	Catalog #	Description	Box qty.
78101196490	BA50	Box hanger	25
78101196491	BA50D	Box hanger for box with 1 1/2" extension	25
78205118460	BA50A	Adjustable box hanger for T-bar	10



TP275BH



TP292BH



TP315

For conduit – no clamps – new work

UPC/part number	Catalog #	Stud spacing	Ground pigtail	Depth	Cubic in.	Fan rated (weight lbs.)	16" Fixture rated (weight lbs.)	24" Fixture rated (weight lbs.)	Box qty.
3078618910315	TP315*	16" - 24"	No	1 1/2"	15.5	35	150	90	12
3078618990292	TP292BH	16" - 24"	No	2 1/8"	21.5	No	50	50	10

*TP315 comes with Romex clamp installed on one side. The other three sides have a 1/2" KO, a bagged MC clamp and screw, and a bagged plastic NM connector.

For non-metallic cable – with clamps – new work

UPC/part number	Catalog #	Stud spacing	Ground pigtail	Depth	Cubic in.	Fan rated (weight lbs.)	16" Fixture rated (weight lbs.)	24" Fixture rated (weight lbs.)	Box qty.
3066227709914	TP275BH	16" - 24"	No	1 1/2"	15.5	70	90	50	10

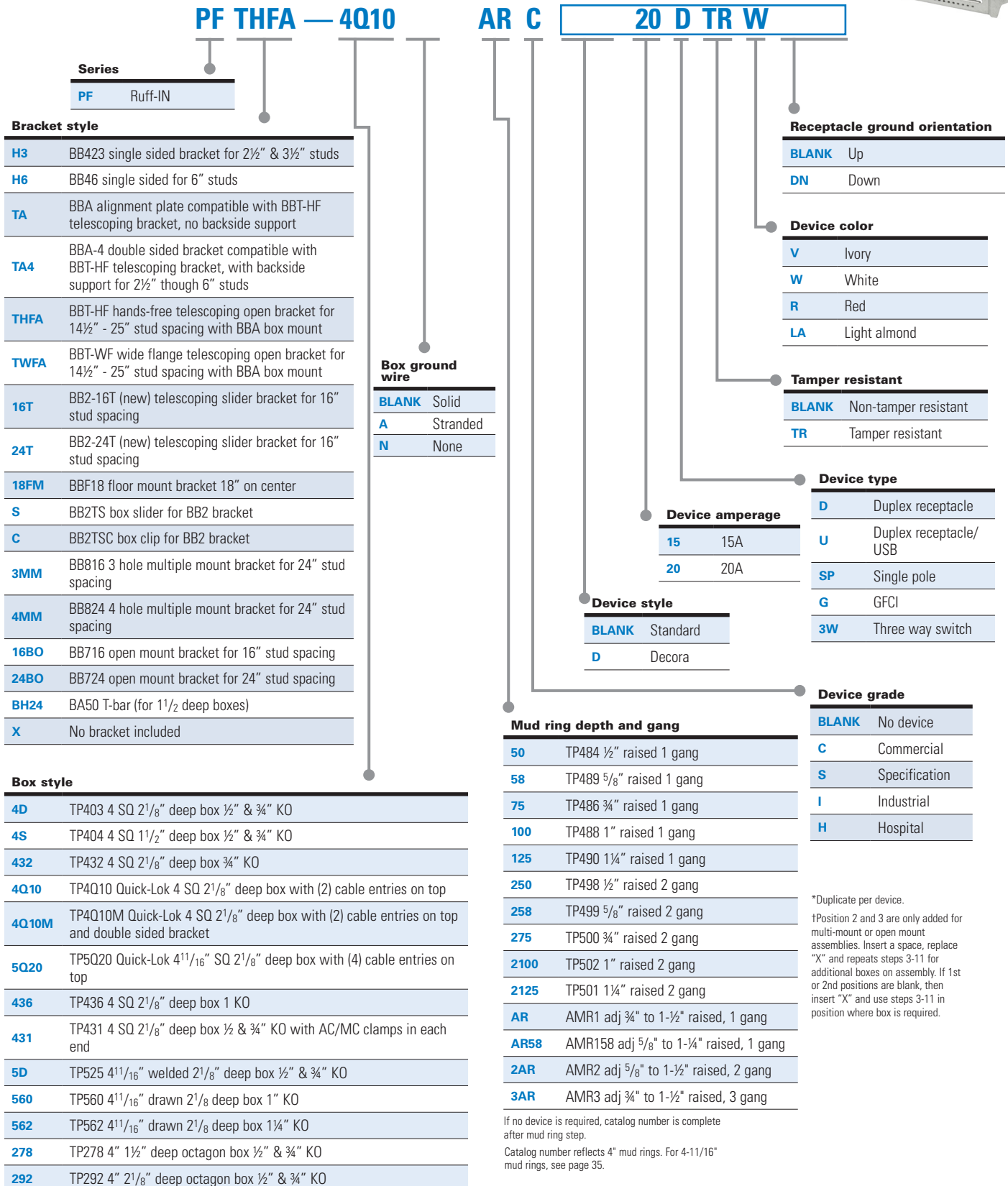
Ruff-IN components - catalog tree

Catalog numbering system for Ruff-IN assembly configurations



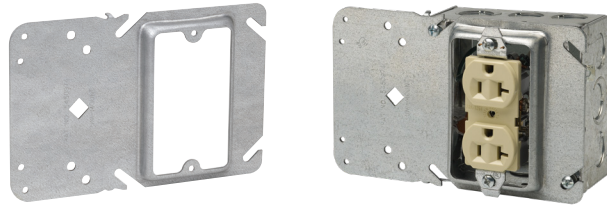
Part number example

PFTHFA-4Q10ARC20DTRW

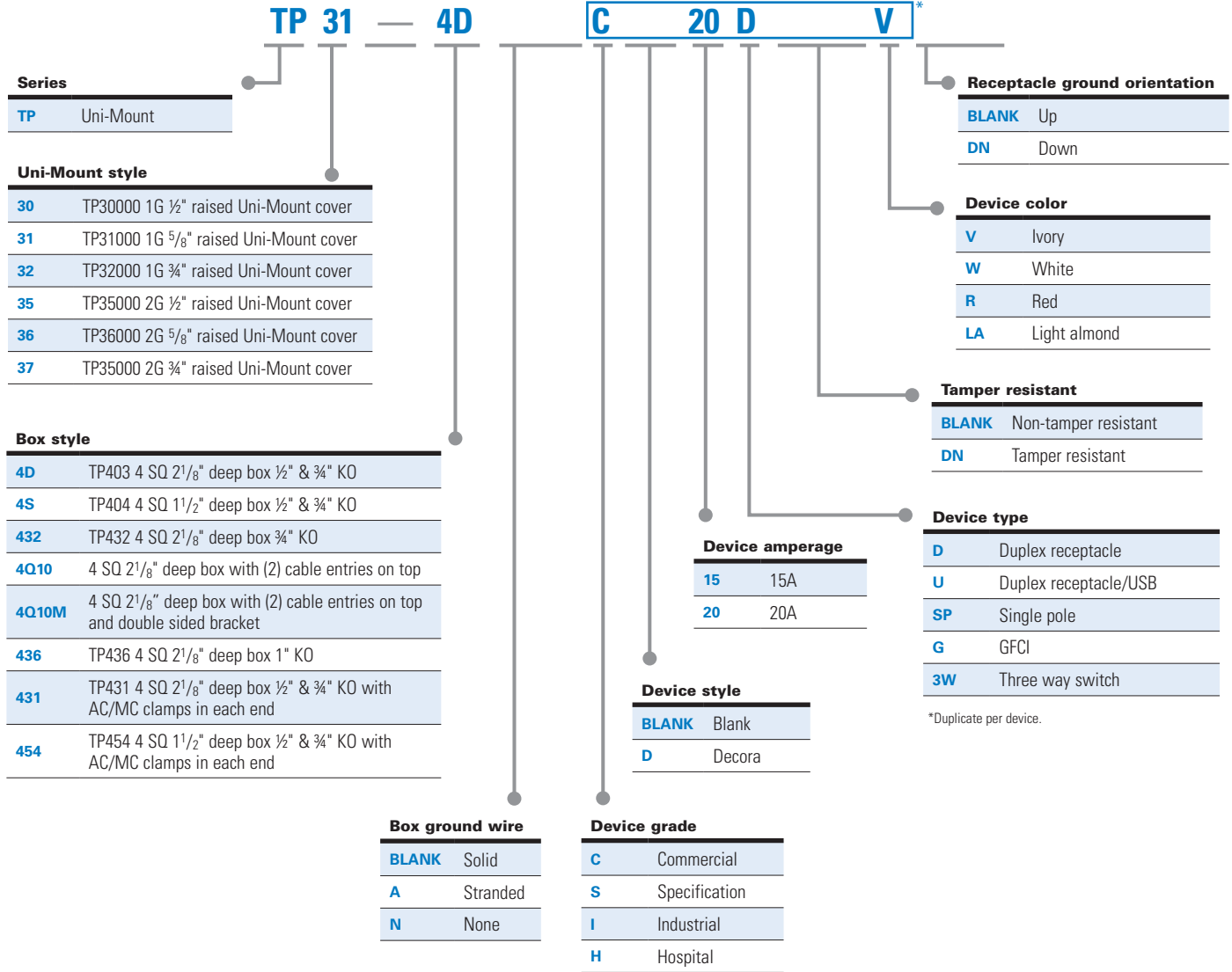


Ruff-IN components - catalog tree

Catalog numbering system for Uni-Mount™ assemblies with wiring devices



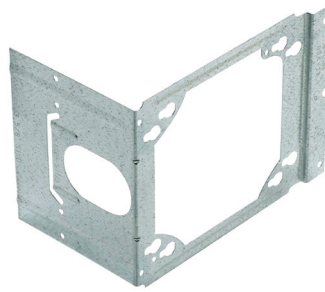
Part number example
TP31-4DC20DV



Ruff-IN component listing - brackets

Listing key:

Designation for
Ruff-IN assembly
part number

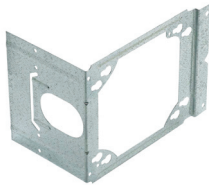


Component
catalog
number

H3 - BB423

Brackets

H3 - BB423



3DS - BB73



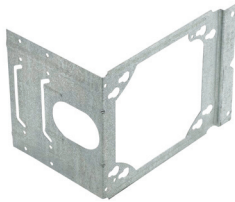
16TS - BB216TS



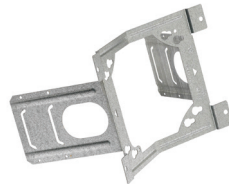
24BO - BB724



H4 - BB44



4DS - BB74



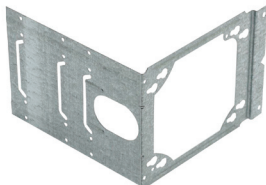
24TS - BB224TS



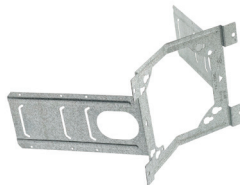
BH24 - BA50



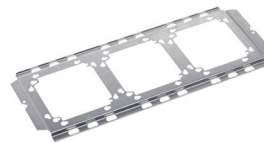
H6 - BB46



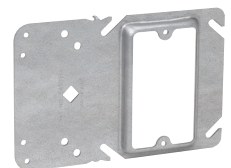
6DS - BB76



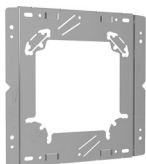
3MM - BB816



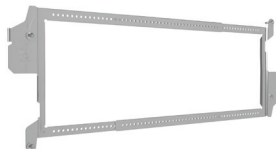
30 - TP3000



TA - BBA



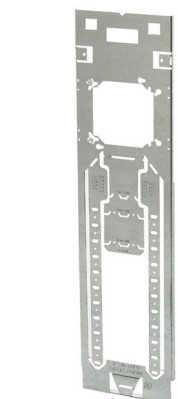
THFA - BBT-HF



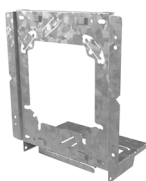
4MM - BB824



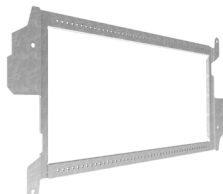
18FM - BBF18



TA4 - BBA-4



TWFA - BBT-WF



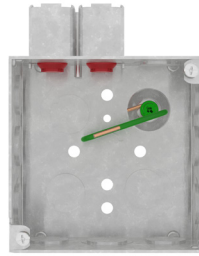
16BO - BB716



Ruff-IN component listing - boxes

Listing key:

Designation for
Ruff-IN assembly
part number



Component
catalog
number

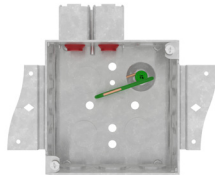
4Q10 - TP4Q10PF

Boxes

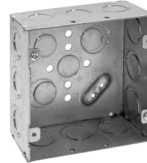
4D - TP403



4Q10M - TP4Q10MPF



5D - TP525



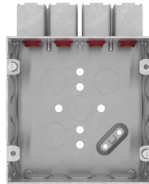
278 - TP278



4S - TP404



5Q20 - TP5Q20



560 - TP560



292 - TP292



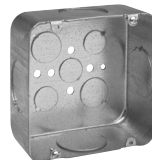
432 - TP432



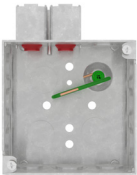
436 - TP436



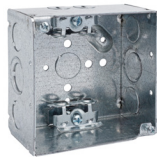
562 - TP562



4Q10 - TP4Q10PF



431 - TP431



Ruff-IN components - mud rings

Listing key:

Designation for
Ruff-IN assembly
part number



Component
catalog
number

AR - AMR1

Mud rings - 4" boxes

50 - TP484



125 - TP490



2100 - TP502



AR - AMR1



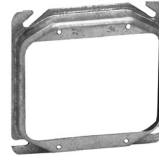
58 - TP489



250 - TP498



2125 - TP501



AR - AMR158



75 - TP486



258 - TP499



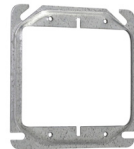
2AR - AR2



100 - TP488



275 - TP500



Ruff-IN components - mud rings

Listing key:

Designation for
Ruff-IN assembly
part number



Component
catalog
number

50 - TP574

Mud rings - 4¹¹/₁₆" boxes

50 - TP574



125 - TP582



275 - TP586



AR - AMR51



58 - TP576



250 - TP583



2100 - TP589



2AR - AMR52



75 - TP579



258 - TP587



2125 - TP593



100 - TP578



**U.S. (global headquarters):
Eaton's Crouse-Hinds, B-Line
and Oil and Gas business**

1201 Wolf Street
Syracuse, NY 13208

(866) 764-5454
FAX: (315) 477-5179
FAX Orders Only:
(866) 653-0640

crousecustomerctr@eaton.com

For more information:

If further assistance is required, please contact an authorized Eaton Distributor, Sales Office, or Customer Service Department.

Canada

Toll Free: 800-265-0502
FAX: (800) 263-9504
FAX Orders only: (866) 653-0645

Mexico/Latin America/Caribbean

52-555-804-4000
FAX: 52-555-804-4020
ventascentromex@eaton.com

Europe (Germany)

49 (0) 6271 806-500
49 (0) 6271 806-476
info-ex@eaton.com

Eaton Middle East

9714-8066100
FAX: 9714-8894813
chbl-me@eaton.com

Singapore

65-6645-9888
FAX: 65-6297-4819
chsi-sales@eaton.com

China

86-21-2899-3600
FAX: 86-21-2899-4055
echsales@eaton.com

Korea

82-2-3484-6783
82-2-3484-6778
ECHKsales@eaton.com

Australia

61-2-8787-2777
FAX: 61-2-9609-2342
Crousehindsanz@eaton.com

India

91-124-4683888
FAX: 91-124-4683899
cchindia@eaton.com

**Eaton's Global Energy Infrastructure Solutions
Crouse-Hinds series and B-Line series products**
1201 Wolf Street
Syracuse, NY 13208
Eaton.com

Eaton
1000 Eaton Boulevard
Cleveland, OH 44122
United States
Eaton.com

© 2025 Eaton
All Rights Reserved
Printed in USA
Publication No. BR406006EN
August 2025

Eaton is a registered trademark.
All other trademarks are property of their respective owners.

**For additional information,
visit Eaton.com**