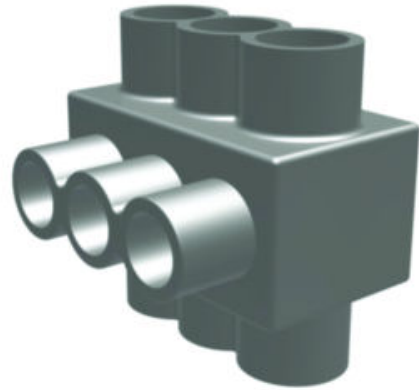




1PLD46, UV Rated Black, 2-sided, 6-ports, #14-4 AWG

By Burndy
Catalog # 1PLD46

Black Covered Distribution Connerctors, 6 Ports, #14-4 AWG,
2.83 IN L.



Features

- UV Rated Covering over AL6061-T6 aluminum body saves time, lowering installation costs and eliminates taping
- Oxide inhibitor pre-installed inhibits moisture and contaminants from entering the contact area
- Range-taking capability reduces the number of connectors necessary to carry in inventory

General

Catalog Number	1PLD46
Connector Type	Multi Tap
Hex Key	1/8
Insulation	Y
Insulation Type	Plastisol
Material	Aluminum
Material - Hardware	Aluminum
Number Of Ports	6
Physical Attribute - Number of Screws	6
Physical Attribute - Screw Type	Allen
Plated	N
Plating Type	Unplated
Temperature Rating	194
Trade Name	UNITAP™
UPC	781810308400
UPC 12 Digit	7818103084000

Dimensions

Dimension - Height fraction	1.25 in
Dimension - Height inch	1.25 in
Dimension - L Length Overall mm	72 mm
Dimension - Length Overall inch	2.83 in
Dimension - Width inch	1.50 in
Dimension - Width mm	38 mm

Electrical Ratings

Voltage - Maximum 600 V

Conductor Related

Conductor - AL Str Size	8 AWG;6 AWG;4 AWG
Conductor - AL Str Size Range	8 AWG-4 AWG
Conductor - Copper Str Size	14 AWG;12 AWG;10 AWG;9 AWG;8 AWG;7 AWG;6 AWG;5 AWG;4 AWG
Conductor - Copper Str Size Range	14 AWG - 4 AWG
Conductor Size	14-4 AWG
Conductor Type	<ul style="list-style-type: none">• AL C Str-Size• CU C Str-Size

Certifications And Compliance

Certification - CSA Approved	No
Certification - ETL	No
Certification - UL Listed Direct Burial	No
Certification - UL Recognized	No
Certification - cULus	No
Standards - RoHS Compliance Status	CM
UL Listed	Yes

Logistics

Minimum Pack Quantity 1

Product Assets

[Catalogs - UNITAP™ Products](#)
[Catalogs - Full Line BURNDY Catalog](#)
[Catalogs - Section A - Mechanical](#)
[Customer Notices - Prop 65 Notice](#)
[Product Cross Section Image\(s\) - BUR_1PLD2010_LineArt](#)
[Sales Drawings - 10013353-01](#)



A proud member of the Hubbell Family.

©2024 Hubbell Incorporated. All rights reserved.
BRDY-1PLD46-SPEC-EN | REV 6/2024

