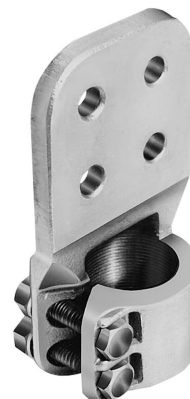


By Burndy
 Catalog # [FD66D6](#)

Cu alloy stud connector, 1-1/4"-12"stud, 4, Amp rating 1300 Amp



Features

- For use on stud to pads
- Allows for bolting cable and tubing terminals to equipment studs
- Hex captured bolts provide one-wrench installation

Application

Substation

Specifications

Buy American Compliant	Contact Manufacturer
EU RoHS Indicator	Yes
Buy America(n) Qualified	Contact Manufacturer
Standards - RoHS Compliance Status	EX
UL Listed	No

Conductor

Conductor - Connection Combination	Stud to Pad
------------------------------------	-------------

Configuration

Physical Attribute - Pad Configuration	4x4 - 4 holes
--	---------------

Dimensions

Dimension - Pad Width inch	4.00 in
Dimension - Pin Diameter fraction	1-1/4 in
Dimension - Pin Diameter inch	1.250 in
Dimension - Height mm	0 mm
Dimension - Thread Size	3/8-12
Dimension - Threads per inch	12
Dimension - B Length fraction	1.75 in
Dimension - Bolt Size fraction	3/8
Dimension - D inch	4.00 in
Dimension - N inch	1.12 in

General

Material - Hardware	DURIUM™ Silicon Bronze
Sub Brand	STUD CONNECTOR
Type	Studs
UPC 12 Digit	781810003237
UPC 14 Digit GTIN	00781810003237
Material	Copper Alloy
UPC	781810003237

Logistics

Minimum Pack Quantity	1
Carton Quantity	4

Product Assets

[Catalog \[English\]](#)