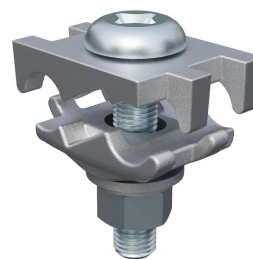


GC2626CT, Mechanical Grounding Connector, One to Two Cables to Bar

By Burndy
Catalog # [GC2626CT](#)



Mechanical Cable Tray Ground Clamp

Features

- Cable Tray Ground Clamp of tin-plated cast copper
- Accommodates either one or two conductors, copper or aluminum cable
- Low profile head with deep Phillips recess
- Galvanized steel bolt has ribbed neck preventing rotation during installation when installed in a 0.44 diameter hole
- Rated for Direct Burial in earth or concrete
- UL467 Listed for the US and Canadian Markets with copper conductor only

Application

For Direct Burial Applications In Concrete Or Earth And For Used With Aluminum Or Galvanized Steel Cable Tray

Specifications

Buy American Compliant	No
Certification - cULus	No
EU RoHS Indicator	Yes
Certification - UL Recognized	No
Industry Standard(s)	UL467
Certification - ETL	No
Standards - Industry Standards Met	UL467
Standards - RoHS Compliance Status	EX
Certification - CSA Approved	No
UL Listed	Yes
Certification - UL Listed Direct Burial	Yes

Conductor

Conductor - Copper Str Size	<ul style="list-style-type: none"> • 2 AWG • 1 AWG • 1/0 • 2/0 AWG
Conductor - AL Str Size	<ul style="list-style-type: none"> • 2 AWG • 1 AWG • 1/0 AWG • 2/0 AWG

Conductor - AL Str Size Range	2 AWG-2/0 AWG
Conductor - Copper Solid Size	<ul style="list-style-type: none"> • 2 AWG • 1 AWG • 1/0 AWG • 2/0 AWG
Conductor - Copper Solid Size Range	2 AWG-2/0 AWG
Conductor - Copper Str Size Range	2 AWG-2/0 AWG

Dimensions

Dimension - Height inch	1.95 in
Dimension - Height mm	49.5 mm
Dimension - Width inch	1.70 in
Dimension - Width mm	43 mm
Dimension - B Length inch	1.12 in
Dimension - Cross Flats inch	0.56 in

Force Related

Installation Torque Recommended in-lb	240 LBS/in
---------------------------------------	------------

General

Sub Brand	MECHANICAL CONNECTOR
Plated	Y
Type	GC-CT
UPC 12 Digit	781810220573
UPC 14 Digit GTIN	00781810220573
Material	Copper Alloy
Plating Type	Tin Plated
UPC	781810220573

Logistics

Minimum Pack Quantity	1
Carton Quantity	50
Pallet Quantity	5400

Product Assets

[Catalog \[English\]](#)