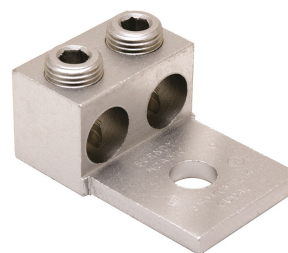


## K2A36U, AL Universal Terminal, 2 Conductor, 1-Hole, #2 AWG Str-600 kcmil, 1/2" Stud, 2 Screws, Al/Cu Rated

By Burndy  
Catalog # K2A36U

Aluminum Universal Terminal, 2 Conductor, 2 Hole, 2 AWG (Str)-600 kcmil



### Features

- Dual rated panelboard lugs
- Constructed from high strength, extruded aluminum alloy
- Electro tin-plated to provide low contact resistance

### Application

For Aluminum And Copper Conductors

### Specifications

Buy American Compliant	Contact Manufacturer
EU RoHS Indicator	Yes
Industry Standard(s)	UL 486A-486B
Standards - Industry Standards Met	UL 486A-486B
Standards - RoHS Compliance Status	EX
Certification - CSA Approved	Yes
UL Listed	Yes
Certification - UL Listed Direct Burial	No

### Conductor

Conductor - Copper Str Size	<ul style="list-style-type: none"> <li>• 2 AWG</li> <li>• 1 AWG</li> <li>• 1/0</li> <li>• 2/0 AWG</li> <li>• 3/0 AWG</li> <li>• 4/0 AWG</li> <li>• 250 kcmil</li> <li>• 300 kcmil</li> <li>• 350 kcmil</li> <li>• 400 kcmil</li> <li>• 450 kcmil</li> <li>• 500 kcmil</li> <li>• 550 kcmil</li> <li>• 600 kcmil</li> </ul>
Conductor - AL Str Size	<ul style="list-style-type: none"> <li>• 2 AWG</li> <li>• 1 AWG</li> <li>• 1/0 AWG</li> <li>• 2/0 AWG</li> <li>• 3/0 AWG</li> <li>• 4/0 AWG</li> <li>• 250 kcmil</li> <li>• 266 kcmil</li> </ul>

- 300 kcmil
- 336 kcmil
- 350 kcmil
- 397 kcmil
- 400 kcmil
- 450 kcmil
- 477 kcmil
- 500 kcmil
- 550 kcmil
- 556 kcmil
- 600 kcmil

Conductor - AL Str Size Range	2 Str. - 600 Kcmil
Number Of Conductors	2
Conductor Size	2 AWG-600 KCMIL
Conductor - Copper Str Size Range	2 Str. - 600 Kcmil
Conductor Type	<ul style="list-style-type: none"> <li>• AL C Str-Size</li> <li>• CU C Str-Size</li> </ul>

### Configuration

Physical Attribute - Number of Holes	1
Connector Type	Parallel Set-Screw

### Current

Voltage - Maximum	35000
Voltage Rating	35000 V

### Dimensions

Package Length	8.100 in
Package Width	3.450 in
Package Weight	1.620 lb.
Dimension - L Length Overall mm	81 mm
Dimension - Pad Width inch	2.42 in
Dimension - Height fraction	1.5714285714285714 in
Dimension - Height inch	1.58 in
Package Height	2.400 in
Dimension - Height mm	40.1 mm
Dimension - Hole Size inch	0.53 in
Dimension - Hole Size mm	13 mm
Dimension - Screw Size inch	3/8
Dimension - Stud Size inch	1/2 in
Dimension - Width fraction	2-41/100 in
Dimension - Width inch	2.42 in

Dimension - Width mm	61 mm
Dimension - Bolt Hole Size inch	0.50 in
Dimension - Bolt Size fraction	1/2
Dimension - Length Overall inch	3.20 in
Dimension - D inch	1.75 in
Dimension - N inch	0.63 in

### Force Related

Installation Torque Recommended in-lb	375 LBS/in
---------------------------------------	------------

### General

Material - Hardware	Aluminum
Sub Brand	UNIVERSAL TERM
Physical Attribute - Screw Type	Slot
Plated	N
Type	Boiled Lugs & Terminals

UPC 12 Digit	781810600207
UPC 14 Digit GTIN	00781810600207
Hardware Type	3/8 UNC Slotted Set Screw
Material	Aluminum
Plating Type	Tin plated
UPC	781810600207

### Logistics

Minimum Pack Quantity	1
Carton Quantity	72
Pallet Quantity	1728

### Operational

Temperature Rating	194
--------------------	-----

### Product Assets

[Catalog \[English\]](#)



A Hubbell brand