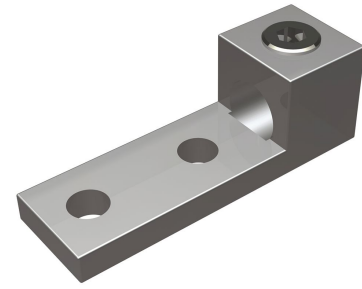




KA44U2N, Aluminum Universal Terminal, 2 Hole, 500-1000 kcmil, 1/2" Stud, 1.75" Stud Hole Spacing, 1 Screw, Al/Cu Rated, Tin Plated.



By Burndy
Catalog # [KA44U2N](#)

Aluminum Universal Terminal, 2 Hole, 500-1000 kcmil, 1/2" Stud, 1.75" Stud Hole Spacing, 1 Screw, Al/Cu Rated, Tin Plated

Features

- Dual Rated Panelboard Lugs
- High strength extruded aluminum alloy
- Electro tin-plated for low contact resistance
- Rated to 35kV

Application

For Aluminum and Copper Conductors

Specifications

Buy American Compliant	No
Certification - cULus	No
EU RoHS Indicator	Yes
Certification - UL Recognized	No
Industry Standard(s)	UL 486A-486B
Certification - ETL	No
Standards - Industry Standards Met	UL 486A-486B
Standards - RoHS Compliance Status	EX
Certification - CSA Approved	Yes
UL Listed	Yes
Certification - UL Listed Direct Burial	No

Conductor

Conductor - Copper Str Size	500 kcmil;550 kcmil;600 kcmil;700 kcmil;750 kcmil;800 kcmil;850 kcmil;900 kcmil;1000 kcmil
Conductor - AL Str Size	500 kcmil;550 kcmil;556 kcmil;600 kcmil;636 kcmil;650 kcmil;700 kcmil;715 kcmil;750 kcmil;795 kcmil;800 kcmil;874 kcmil;900 kcmil;954 kcmil;1000 kcmil
Conductor - AL Str Size Range	500 kcmil-1000 kcmil
Number Of Conductors	1
Conductor Size	500-1000 KCMIL
Conductor - Copper Str Size Range	500 kcmil-1000 kcmil
Conductor Type	CU C Str-Size;AL C Str-Size

Configuration

Physical Attribute - Number of Holes	2
Physical Attribute - Number of Screws	1
Connector Type	Terminal

Dimensions

Dimension - L Length Overall mm	121 mm
Dimension - Pad Width inch	1.77 in
Dimension - Height fraction	1.95 in
Dimension - Height inch	1.95 in
Dimension - Height mm	49.5 mm
Dimension - Hole Size inch	0.56 in
Dimension - Hole Size mm	14 mm
Dimension - Stud Size inch	1/2
Dimension - Width fraction	1-3/4 in
Dimension - Width inch	1.75 in
Dimension - Width mm	44 mm
Dimension - Bolt Hole Size inch	0.50 in
Dimension - Bolt Size fraction	1/2
Dimension - Length Overall inch	4.75 in
Dimension - D inch	3.03 in
Dimension - N inch	0.63 in

Force Related

Installation Torque Recommended in-lb	550 LBS/in
---------------------------------------	------------

General

Material - Hardware	Aluminum
Sub Brand	UNIVERSAL TERM
Physical Attribute - Screw Type	Allen
Plated	Y
Type	Bolted Lugs & Terminals
UPC 14 Digit GTIN	00781810370506
Material	Aluminum
Plating Type	Tin
UPC	781810370506

Logistics

Minimum Pack Quantity 1
Carton Quantity 54
Pallet Quantity 54

Product Assets

[Catalog \[English\]](#)



A Hubbell brand

© 2025 Hubbell Incorporated. All rights reserved
BRDY-KA44U2N-SPEC-EN | REV 11/2025