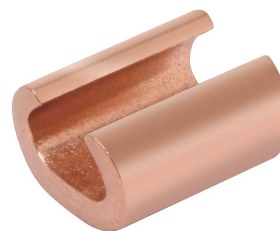


YC2C2, Copper C-Shape Connector

By Burndy
Catalog # YC2C2

CU Compression C Shape Compression Connector



Features

- Range-taking connector lowering inventory requirements
- Compact size, easy to tape and insulate connection
- High conductivity wrought copper provides low resistance and excellent electrical conductivity

Application

For Range Of Copper And Making Tap Or Parallel Copper Connections

Specifications

Buy American Compliant	No
Certification - cULus	No
EU RoHS Indicator	Yes
Certification - UL Recognized	No
Industry Standard(s)	UL 486A;UL486B
Certification - ETL	No
Standards - Industry Standards Met	UL 486A;UL486B
Standards - RoHS Compliance Status	CM
Certification - CSA Approved	No
UL Listed	Yes

Conductor

Conductor - Copper Solid Run Range	2 AWG
Conductor - Copper Solid Tap Range	2 AWG
Conductor - Copper Str Run	2 AWG

Conductor - Copper Str Run Range	2 Sol. - 2 Str
Conductor - Copper Str Tap Range	2 Sol. - 2 Str
Conductor Type	Cu C Sol-Size

Dimensions

Dimension - L Length Overall mm	17 mm
Dimension - Height inch	1.05 in
Dimension - Height mm	0 mm
Dimension - Length Overall inch	0.67 in

General

Die Index	C
Trade Name	CRIMPIT™
Sub Brand	CRIMPIT
Plated	N
Type	YC-C Series
UPC 12 Digit	781810111505
UPC 14 Digit GTIN	00781810111505
Material	Copper
Plating Type	Unplated
UPC	781810111505

Logistics

Minimum Pack Quantity	1
Carton Quantity	100
Pallet Quantity	23200

Product Assets

[Catalog \[English\]](#)