

Calbrite Stainless Steel Conduit Systems

Product Catalog



Atkore[™]
Calbrite

Choose Calbrite...

For the harshest environments and sanitary requirements.

Calbrite Stainless Steel Electrical Conduit Systems, Strut Support Systems and Accessories provide the sanitary protection and performance that stand up to the harshest environments.



BriteRail® Sanitary
Strut Support System

NSF 169
Certified



Call a Calbrite expert or visit Calbrite.com to better protect your electrical raceway system. 800-536-2248

Introduction

Broadest Selection. Better Response. Best Performance.

Calbrite™ the leader in stainless steel conduit systems features the largest product offering in the industry. Headquartered in Hobart, IN, Calbrite manufactures more than 2,800 SKUs for harsh and corrosive environments. Manufactured to strict guidelines set forth by UL and NEMA.

Supporting US and Canadian customers from two manufacturing and distribution centers in the USA, Calbrite is committed to providing quality products with the shortest lead times. Calbrite's world class service helps customers develop unique products, convert installations to stainless steel, efficiently resolve challenging issues – all at a competitive price.

Calbrite's quality assurance program complies with industry standards established by Underwriters Laboratories (UL), ANSI and NEMA UL® listings.

Product breadth, durability, cost-effectiveness, and design flexibility makes Calbrite Stainless Steel the preferred choice for harsh environments and corrosive applications.





Food and Beverage

Ideal for food and beverage processing applications, Calbrite stainless steel conduit, fittings, and applicable accessories stand up to the often acidic content of chemicals commonly used in these wash-down environments.

Cleaning agents and chemical disinfectants can quickly corrode equipment, promoting bacterial growth and enabling food contamination. Stainless steel is safe, easily sterilized and a more hygienic choice for these applications providing resistance to pitting and stress corrosion cracking.

Pharmaceutical, Petrochemical and Chemical Industries

Stainless steel resists corrosion in aqueous, gaseous and high-temperature environments and maintains its mechanical properties in all temperatures. Equally important, its long-term value provides substantial cost savings in applications using acidic, toxic and flammable chemical combinations which can rapidly deteriorate traditional material conduit systems. Cleaning agents

Stainless steel's corrosion-resistance, weldability, strength, ductility, fabrication versatility and composition stability can significantly guard against product contamination. It is important the surfaces of the conduit and fittings are smooth and easy to maintain and clean in order

Calbrite Stainless Steel products address the three basic requirements when working with food or beverage processing equipment and workstations:

1. Must be extremely easy to clean
2. Must be corrosion and damage resistant
3. Must be easy to sanitize

Cleanliness and hygiene are critical in these environments, and stainless steel has a wide range of preferred performance qualities in comparison to traditional galvanized, aluminum and PVC Coated conduit systems. The smooth polished surface of Calbrite's stainless steel conduit and fittings not only promotes cleanliness, but also greatly reduces the risk of corrosion. Calbrite Stainless Steel products are UL and NSA listed for safety and sanitation.

to minimize microbial contamination, reduce corrosion and prevent the adherence of particulates to surfaces.



Markets Served

Pulp and Paper



In pulp and paper applications, stainless steel is used extensively because of its superior mechanical properties and resistance to liquor used in the process. These benefits will become even more of a priority as pulp mills move into the realm of bio-refineries.

Stainless steel's properties prevent contamination of the end product and are resistant to process corrosion. Although the process is mostly standard in all mills, there can be small operational differences that may affect levels of corrosion. Stainless steel is able to withstand these differences in a stable, uniform

manner making it the most reliable material choice for these applications.

Some of the more common applications for stainless steel conduit in the pulp and paper industry include:

- Batch and continuous digesters
- Brown stock washers
- Black liquor equipment and tanks and recovery circuits
- Bleach plant
- Lime kiln (for high temperature properties)
- Air and water pollution control equipment
- Waste paper recycling
- Stock preparation equipment
- Paper machines including suction rolls

Transportation/Infrastructure

Structure owners and users are becoming increasingly aware of the liabilities and costs of corrosion.

The cost of carrying out remedial work particularly on highway structures, bridges and tunnels has led to a renewed interest in the use of stainless steel reinforcement. Stainless steel has proven to minimize the risk of corrosion to structures exposed to marine/coastal environments, road de-icing salts, chlorides, and other harsh elements. The use of stainless steel conduit systems drastically reduces or even eliminates the need for difficult and costly future maintenance.



Providing the lowest annualized cost to maintain, stainless steel conduit also reduces the need for costly repair shutdowns lessening the impact to traffic and safety. Stainless steel is known for its durability, strength and resistance to fire and water damage, making it a practical choice for public and industrial structures.

Water and Waste Water

In recent years, the use of stainless steel in water and wastewater treatment plants (WWTP) has grown significantly, where type 304 and 316 grades have been increasingly utilized as standard materials for construction due to superior performance and cost-saving factors.

A WWTP is a complex, sophisticated system with a high-level of standards for the entire plant, including technical installations. The materials needed to construct a WWTP must be able to withstand the wide range of corrosive environments and conditions.

For maintaining a clean, environmentally safe and cost-effective plant, there is no better material than stainless steel. Stainless steel will improve efficiency, reduce maintenance costs, and in many cases, provide the most cost-effective solution.

Benefits to this industry include:

- Corrosion resistance to a wide range of waters and chemicals, such as Hydrogen Sulfide (H₂S)
- A protective layer forms naturally on all stainless steels because of the inclusion of chromium. Even if damaged and oxygen is present, the invisible passive layer “self-heals” and protects the steel from corrosion, ensuring a long life
- Stainless steel is not harmful to people during its production or use, recycling and ultimate disposal
- Good strength and ductility
- Ease of fabrication
- Lightweight and easy to transport
- Availability in a wide range of product forms
- Durability
- Fully recyclable



Markets Served

Power Plants, Energy and Power Generation



Regardless of the form of energy production (nuclear, fossil or renewable), safety and long term value are the utmost concerns for energy and power generation companies with the nuclear power industry requiring absolute reliability. These characteristics are provided by using high quality stainless steel.

Stainless steel is now extensively used in the power generation industry to combat corrosion, particularly at elevated temperatures. In particular, type 304 and 316 stainless are used for high temperature, strength and oxidation resistance in fossil fueled power plants.

The nuclear power industry uses large quantities of stainless, often specified for both power generation and radiation containment. Steam and gas turbines also use stainless because of its corrosion-resistant and heat-resistant qualities.

Shipbuilding and Marine

Stainless steel is increasingly recognized as the material of choice for shipbuilding and marine applications due to its corrosion resistance, durability, appearance, stability, and overall quality.

Remedial work, particularly on vessels, docks/piers, offshore platforms, and within marinas has led to an increased use of stainless steel to minimize the risk of corrosion to structures exposed to marine/coastal environments and other harsh elements. The use of Calbrite stainless steel conduit systems drastically reduces or even eliminates the need for future maintenance.

Where resistance to constant sun and salt-water corrosion is a dominant requirement, the more highly-alloyed, molybdenum-containing types of stainless steel may be necessary to prevent the material from failing under these conditions. Stainless steel is used in marine building projects above or below the water line. Stainless steel has proven to be one of the most economical solutions to combat the ever

present elements that cause corrosion. Easy to fabricate and light enough for simple transport, stainless steel is available in a wide range of product forms. A protective layer forms naturally on all stainless steel because of the inclusion of chromium. Even if damaged and oxygen is present, the invisible passive layer self-heals and protects the steel from corrosion.



Introduction 03

Conduit 11

Elbows, Nipples, Couplings 17

Connectors 27

Conduit Hubs..... 35

Conduit Bodies 41

Device Boxes & Covers 49

Hazardous Location Fittings..... 59

Expansion Fittings 65

Flex Conduit & Fittings 69

Cord Grip and Cable Connectors 83

Straps & Clamps..... 89

Miscellaneous Fittings..... 103

Sanitary Strut 115

Strut & Strut Accessories 127

Hardware 145









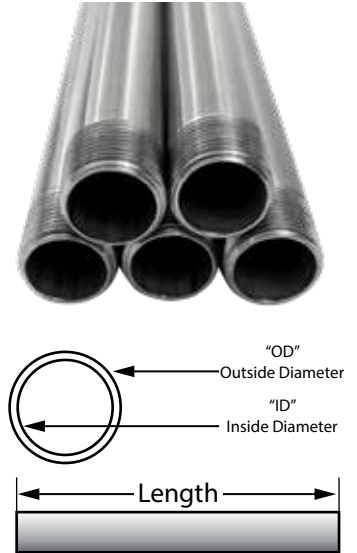
Conduit

Stainless Steel Rigid Conduit	12
Stainless Steel EMT	13
Stainless Steel Threaded & Non-Threaded IMC	14

Stainless Steel Rigid Conduit

Features:

- Manufactured in type 304L and 316L stainless steel to meet the demands of any corrosive environment
- Polished with standard “brite” finish to increase corrosion resistance and aesthetic appearance
- Calbrite stainless steel rigid conduit is installed in the same way as any other metallic conduit; there are none of the labor-intensive procedures that come with PVC-coated installations, nor the complicated maintenance and repair procedures
- Standard NPT threads allow for trouble-free installations
- Approx. Heat Tolerance = -150°F to 1600°F
- Includes one coupling with each length purchased



Certifications and Compliances:

- UL/cUL 6A Listed
- UL File # E230584
- Article 344, National Electrical Code (NEC)
- CSA C22.1
- Canadian Electrical Code (CEC), Part 1, Standard for Electrical Installations
- NSF/ANSI 169 Certified

Applications:

Stainless conduit is specified in corrosive applications that exceed the limitations of aluminum, fiberglass, rigid steel, PVC, and PVC coated conduit. Calbrite’s Type 304 and 316 UL-listed stainless steel conduit meets and exceeds current requirements for wash down and harsh/corrosive environments and satisfies the strictest mandates for plant cleanliness by various state agencies and hundreds of common regulatory requirements.



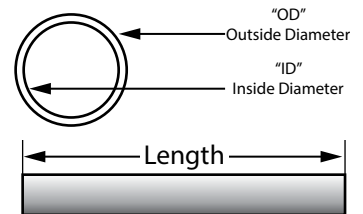
Type 304 Part Number	Type 316 Part Number	Trade Size (in)	Outside Diameter (in)	Inside Diameter (in)	Threads per inch	Length w/o Coupling (ft in)	Weight per feet (lb)
S40510CT00	S60510CT00	½	0.840	0.622	14	9' 11¼	0.820
S40710CT00	S60710CT00	¾	1.050	0.824	14	9' 11¼	1.090
S41010CT00	S61010CT00	1	1.315	1.049	11.5	9' 11	1.610
S41210CT00	S61210CT00	1¼	1.660	1.380	11.5	9' 11	2.180
S41510CT00	S61510CT00	1½	1.900	1.610	11.5	9' 11	2.630
S42010CT00	S62010CT00	2	2.375	2.067	11.5	9' 11	3.500
S42510CT00	S62510CT00	2½	2.875	2.469	8	9' 10½	5.590
S43010CT00	S63010CT00	3	3.500	3.068	8	9' 10½	7.270
S44010CT00	S64010CT00	4	4.500	4.026	8	9' 10¼	10.080
S45010CT00	S65010CT00	5	5.563	5.073	8	9' 10	14.610
S46010CT00	S66010CT00	6	6.625	6.093	8	9' 10	18.970

All dimensions are for informational purposes only *Tolerances +/- 5%

Stainless Steel EMT

Features:

- Manufactured in type 304L and 316L stainless steel to meet any stringent sanitary condition
- Polished with standard “brite” finish to increase corrosion resistance and aesthetic appearance
- Calbrite is the exclusive manufacturer of stainless EMT
- Stainless steel EMT requires no threading and is joined together by utilizing Calbrite EMT set screw or compression fittings, providing simplified installations and reduced costs
- Lighter weight provides cost savings on installation and shipping (weighs 58% less than stainless steel rigid conduit and 43% less than IMC)



Certifications and Compliances:

- UL/cUL 6A Listed
- UL File # E315441
- UL 797A Listed
- NSF/ANSI 169 Certified
- Inclusive for installation in accordance with Article 358 of ANSI/NFPA 70, National Electrical Code (NEC)

Applications:

Stainless steel EMT conduit and fittings combine strength with ductility, resulting in an affordable, lightweight and easy-to-handle conduit assembly. EMT can be installed indoors and outdoors in accordance with UL and NEC® requirements.



Type 304 Part Number 10' Length	Type 316 Part Number 10' Length	Type 304 Part Number 5' Length	Type 316 Part Number 5' Length	Trade Size (in)	Outside Diameter (in)	Inside Diameter (in)	Weight per feet (lb)
S10510CT00	S20510CT00	S10505CT00	S20505CT00	½	0.706	0.612	0.330
S10710CT00	S20710CT00	S10705CT00	S20705CT00	¾	0.922	0.796	0.602
S11010CT00	S21010CT00	S11005CT00	S21005CT00	1	1.163	1.000	0.938
S11210CT00	S21210CT00	S11205CT00	S21205CT00	1¼	1.510	1.352	1.238
S11510CT00	S21510CT00	S11505CT00	S21505CT00	1½	1.740	1.610	1.409
S12010CT00	S22010CT00	S12005CT00	S22005CT00	2	2.200	2.020	2.269
S12510CT00	S22510CT00	S12505CT00	S22505CT00	2½	2.875	2.708	2.480
S13010CT00	S23010CT00	S13005CT00	S23005CT00	3	3.500	3.334	3.030
S14010CT00	S24010CT00	S14005CT00	S24005CT00	4	4.500	4.334	3.920

All dimensions are for informational purposes only *Tolerances +/- 5%



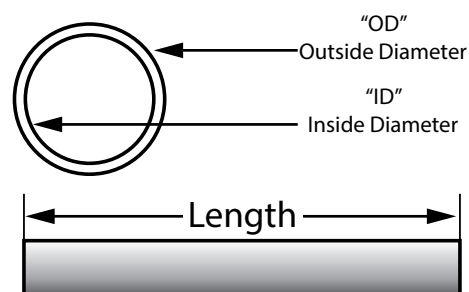
Stainless Steel Threaded & Non-Threaded IMC

Features:

- Manufactured in type 304L and 316L stainless steel to meet any stringent sanitary condition
- Polished with standard “brite” finish to increase corrosion resistance and aesthetic appearance
- No special tools or processes required for installation
- Standard NPT threads allow for trouble-free installations
- Lighter weight provides cost savings with labor and shipping
- Any custom size available up to 20’ in length

Certifications and Compliances:

- UL 1242 Listed
- UL File # E363502
- Inclusive for installation in accordance with Article 344 of ANSI/NFPA 70, National Electrical Code (NEC)
- NSF/ANSI 169 Certified



Non-Threaded					
Type 304 Part Number	Type 316 Part Number	Trade Size (in)	Outside Diameter (OD) (in)	Inside Diameter (ID) (in)	Weight per Feet (lb)
S50510CT00	S70510CT00	½	0.840	0.660	0.640
S50710CT00	S70710CT00	¾	1.050	0.864	0.880
S51010CT00	S71010CT00	1	1.315	1.120	1.350
S51210CT00	S71210CT00	1¼	1.660	1.442	1.900
S51510CT00	S71510CT00	1½	1.900	1.703	2.020
S52010CT00	S72010CT00	2	2.375	2.170	2.560

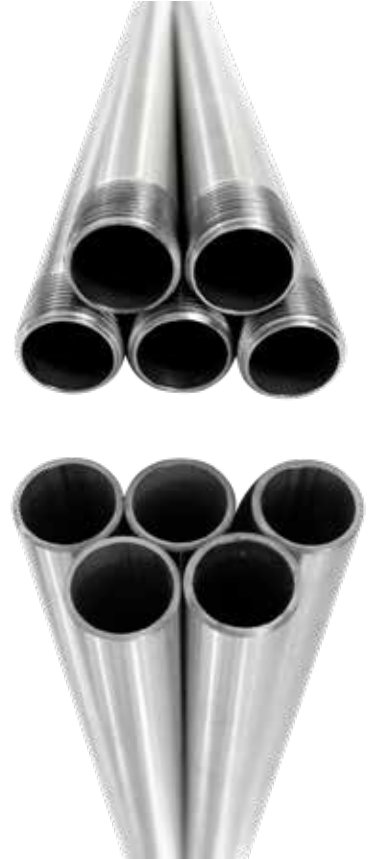
Threaded					
Type 304 Part Number	Type 316 Part Number	Trade Size (in)	Outside Diameter (OD) (in)	Inside Diameter (ID) (in)	Weight per Feet (lb)
S50510CTWT	S70510CTWT	½	0.840	0.660	0.620
S50710CTWT	S70710CTWT	¾	1.050	0.864	0.840
S51010CTWT	S71010CTWT	1	1.315	1.120	1.190
S51210CTWT	S71210CTWT	1¼	1.660	1.442	1.810
S51510CTWT	S71510CTWT	1½	1.900	1.703	1.940
S52010CTWT	S72010CTWT	2	2.375	2.170	2.390

All dimensions are for informational purposes only *Tolerances +/- 5%

Stainless Steel Threaded & Non-Threaded IMC

Applications:

Stainless steel IMC is often specified in corrosive environments where it is subjected to harsh chemical treatments or wash-downs due to its lighter weight, precise tolerances, and ease of installation. Calbrite's IMC is manufactured with or without threads. The threaded conduit can be used with compression or standard threaded couplings, allowing for lowered costs and simplified installations.





Elbows, Nipples, Couplings



Elbows, Nipples, Couplings

Couplings	18
Three-Piece Couplings	19
Rigid 90 & 45 Degree Elbows	20
EMT 90 & 45 Degree Elbows	21
Nipples	22

Stainless Steel Couplings

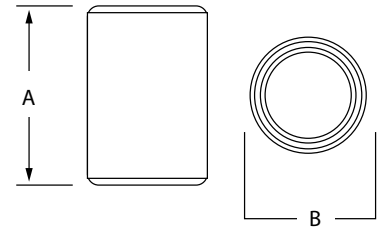
Features:

- Manufactured in type 316 stainless steel to meet any stringent sanitary condition
- Polished with standard “brite” finish to increase corrosion resistance and aesthetic appearance
- Included with each length of stainless threaded conduit
- Straight threads–NPS
- No package quantity required



Certifications and Compliances:

- UL/cUL 6A Listed
- UL File # E230584
- Manufactured in accordance with CSA C22.1, Canadian Electrical Code, Part 1, NOM-001-SEDE Standard for Electrical Installations, Inclusive for installation in accordance with Article 344 of ANSI/NFPA 70, National Electrical Code (NEC)



Applications:

Designed for use with stainless steel threaded conduit, and to connect threaded stainless conduit, nipples and other threaded fittings.



Part Number	Trade Size (in)	A (in)	B (in)	ID (in)	Wall Thickness (in)	Weight per each (lb)
S60500CP00	½	1.650	1.030	0.840	0.110	0.130
S60700CP00	¾	1.670	1.325	1.050	0.140	0.240
S61000CP00	1	2.000	1.585	1.315	0.160	0.370
S61200CP00	1¼	2.060	1.950	1.660	0.160	0.430
S61500CP00	1½	2.090	2.210	1.900	0.200	0.650
S62000CP00	2	2.160	2.700	2.375	0.200	0.850
S62500CP00	2½	3.220	3.280	2.875	0.250	1.940
S63000CP00	3	3.330	3.870	3.500	0.250	2.250
S64000CP00	4	3.550	5.000	4.500	0.250	4.000
S65000CP00	5	3.980	6.250	5.563	0.440	7.850
S66000CP00	6	4.250	7.320	6.625	0.440	9.500

All dimensions are for informational purposes only *Tolerances +/- 5%

Elbows, Nipples, Couplings

Stainless Steel Three-Piece Couplings

Features:

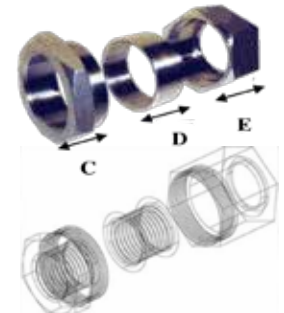
- Manufactured in type 316 stainless steel to meet any stringent sanitary condition
- Polished with standard “brite” finish to increase corrosion resistance and aesthetic appearance
- Designed for use with stainless threaded conduit
- Machined tapered female threads for smooth bore inside diameter
- No package quantity required

Certifications and Compliances:

- UL/cUL 514B Listed
- UL File # E308159
- CSA C22.2 No. 18.3
- Intended for installation in accordance with ANSI/NFPA 70, National Electrical Code (NEC)
- Intended for installation in accordance with CAN/CSA-C22.1, “Canadian Electrical Code, Part I”

Applications:

To join and connect threaded ends of stainless conduit where neither length of conduit can be turned.



Part Number	Trade Size (in)	A (in)	B (in)	C (in)	D (in)	E (in)	Female Thread ID (in)	Weight per each (lb)
S605003U00	½	1.535	1.680	0.800	0.750	1.240	0.840	0.45
S607003U00	¾	1.800	1.750	0.825	0.770	1.300	1.050	0.60
S610003U00	1	2.143	2.130	1.000	0.975	1.553	1.315	0.98
S612003U00	1 ¼	2.540	2.160	1.030	0.985	1.590	1.660	1.18
S615003U00	1 ½	2.870	2.161	1.030	0.985	1.600	1.900	1.50
S620003U00	2	3.525	2.200	1.040	1.000	1.630	2.375	2.27
S625003U00	2 ½	3.400	3.720	1.580	1.560	2.950	2.875	2.50
S630003U00	3	4.070	3.800	1.610	1.610	3.100	3.500	3.28
S640003U00	4	5.250	4.110	1.850	1.750	3.200	4.500	6.35

All dimensions are for informational purposes only *Tolerances +/- 5%



Stainless Steel 45° & 90° Rigid Elbows

Features:

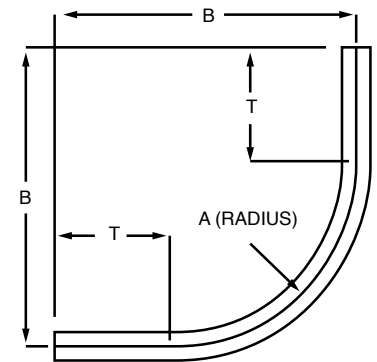
- Manufactured in both type 304 and 316 stainless steel to meet any stringent sanitary condition
- Polished with standard “brite” finish to increase corrosion resistance and aesthetic appearance
- Threaded both ends
- Threads are protected by color coded plastic caps

Certifications and Compliances:

- UL / cUL 6A Listed
- UL File # E230584
- Article 344 and Table 2 Chapter 9, National Electrical Code (NEC)
- CSA C22.1
- Canadian Electrical Code (CEC), Part 1, Standard for Electrical Installations

Options:

Degree of bend can be specified to any value between 5° to 90° Large-radius elbows also available



90° Rigid Elbow

Type 304 Part Number	Type 316 Part Number	Trade Size (in)	A (in)	Degree of Bend (deg)	T (in)	B (in)
S40590EL00	S60590EL00	½ X 90°	4.00	90.00	3.100	7.500
S40790EL00	S60790EL00	¾ X 90°	4.50	90.00	2.900	7.900
S41090EL00	S61090EL00	1 X 90°	5.80	90.00	3.500	9.900
S41290EL00	S61290EL00	1¼ X 90°	7.30	90.00	4.300	12.400
S41590EL00	S61590EL00	1½ X 90°	8.30	90.00	5.000	14.200
S42090EL00	S62090EL00	2 X 90°	9.50	90.00	4.600	15.300
S42590EL00	S62590EL00	2½ X 90°	10.50	90.00	6.500	18.400
S43090EL00	S63090EL00	3 X 90°	13.00	90.00	6.800	21.600
S44090EL00	S64090EL00	4 X 90°	16.00	90.00	8.400	26.700
S45090EL00	S65090EL00	5 X 90°	24.00	90.00	11.200	37.40
S46090EL00	S66090EL00	6 X 90°	30.00	90.00	12.600	48.90

All dimensions are for informational purposes only *Tolerances +/- 5%

Elbows, Nipples, Couplings

Stainless Steel 45° & 90° EMT Elbows

Features:

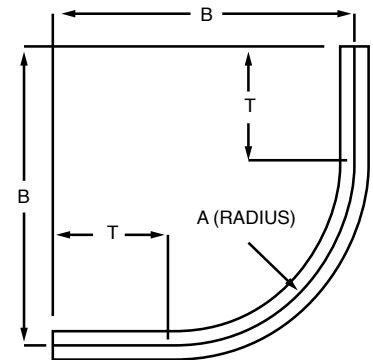
- Manufactured in both type 304 and 316 stainless steel to meet any stringent sanitary condition
- Polished with standard “brite” finish to increase corrosion resistance and aesthetic appearance
- Fabricated from UL Listed Electrical Metallic Tubing (EMT)
- No package quantity required

Certifications and Compliances:

- UL 797A Listed
- UL File # E315441
- Inclusive for installation in accordance with Article 358 of ANSI/NFPA 70, National Electrical Code (NEC)
- NSF/ANSI 169

Applications:

- Stainless steel EMT elbows are to be installed on conduit raceways for the interconnection of conduit runs and other fittings.



90° EMT Elbow



Type 304 Part Number	Type 316 Part Number	Trade Size (in)	A (in)	B (in)	T (in)	Cut Length (in)	Weight per each (lb)
S10590EL00	S20590EL00	½	4.00	7.00	2.90	12.00	0.32
S10790EL00	S20790EL00	¾	4.50	7.60	3.00	12.90	0.44
S11090EL00	S21090EL00	1	5.80	9.40	3.15	15.00	0.88
S11290EL00	S21290EL00	1¼	7.30	10.80	3.35	18.00	1.52
S11590EL00	S21590EL00	1½	8.30	12.00	3.55	20.30	2.08
S12090EL00	S22090EL00	2	9.50	13.64	4.35	23.40	3.05

All dimensions are for informational purposes only *Tolerances +/- 5%



Nipples

Certifications and Compliances:

- UL/cUL 6A Listed
- CSA C22.2 No.45.2-08
- UL File # E230584
- Inclusive for installation in accordance with Article 344 of ANSI/NFPA 70, National Electrical Code (NEC)
- Canadian Electrical Code (CEC), Part 1, Standard for Electrical Installations



Type 304 Part Number	Type 316 Part Number	Trade Size (in)	Length (in)	Weight per each (lb)
S405CLCN00	S605CLCN00	½ X CL	1⅞	0.05
S40515CN00	S60515CN00	½ X 1½	1½	0.08
S40520CN00	S60520CN00	½ X 2	2	0.1
S40525CN00	S60525CN00	½ X 2½	2½	0.14
S40530CN00	S60530CN00	½ X 3	3	0.18
S40535CN00	S60535CN00	½ X 3½	3½	0.22
S40540CN00	S60540CN00	½ X 4	4	0.24
S40550CN00	S60550CN00	½ X 5	5	0.3
S40560CN00	S60560CN00	½ X 6	6	0.4
S40580CN00	S60580CN00	½ X 8	8	0.51
S40510CN00	S60510CN00	½ X 10	10	0.68
S40512CN00	S60512CN00	½ X 12	12	0.80
S407CLCN00	S607CLCN00	¾ X CL	1⅞	0.08
S40715CN00	S60715CN00	¾ X 1½	1½	0.09
S40720CN00	S60720CN00	¾ X 2	2	0.13
S40725CN00	S60725CN00	¾ X 2½	2½	0.19
S40730CN00	S60730CN00	¾ X 3	3	0.23
S40735CN00	S60735CN00	¾ X 3½	3½	0.28
S40740CN00	S60740CN00	¾ X 4	4	0.33
S40745CN00	S60745CN00	¾ X 4½	4½	0.38
S40750CN00	S60750CN00	¾ X 5	5	0.40
S40760CN00	S60760CN00	¾ X 6	6	0.50
S40780CN00	S60780CN00	¾ X 8	8	0.73
S40710CN00	S60710CN00	¾ X 10	10	0.84
S40712CN00	S60712CN00	¾ X 12	12	1.08

All dimensions are for informational purposes only *Tolerances +/- 5%

Elbows, Nipples, Couplings

Type 304 Part Number	Type 316 Part Number	Trade Size (in)	Length (in)	Weight per each (lb)
S410CLCN00	S610CLCN00	1 X CL	1 ½	0.16
S41020CN00	S61020CN00	1 X 2	2	0.20
S41025CN00	S61025CN00	1 X 2½	2½	0.27
S41030CN00	S61030CN00	1 X 3	3	0.34
S41035CN00	S61035CN00	1 X 3½	3½	0.41
S41040CN00	S61040CN00	1 X 4	4	0.47
S41045CN00	S61045CN00	1 X 4½	4½	0.53
S41050CN00	S61050CN00	1 X 5	5	0.63
S41060CN00	S61060CN00	1 X 6	6	0.75
S41080CN00	S61080CN00	1 X 8	8	1.09
S41010CN00	S61010CN00	1 X 10	10	1.38
S41012CN00	S61012CN00	1 X 12	12	1.47
S412CLCN00	S612CLCN00	1¼ X CL	1½	0.19
S41220CN00	S61220CN00	1¼ X 2	2	0.25
S41225CN00	S61225CN00	1¼ X 2½	2½	0.34
S41230CN00	S61230CN00	1¼ X 3	3	0.44
S41235CN00	S61235CN00	1¼ X 3½	3½	0.55
S41240CN00	S61240CN00	1¼ X 4	4	0.62
S41245CN00	S61245CN00	1¼ X 4½	4½	0.80
S41250CN00	S61250CN00	1¼ X 5	5	0.80
S41260CN00	S61260CN00	1¼ X 6	6	1.00
S41280CN00	S61280CN00	1¼ X 8	8	1.36
S41210CN00	S61210CN00	1¼ X 10	10	1.82
S41212CN00	S61212CN00	1¼ X 12	12	1.97
S415CLCN00	S615CLCN00	1½ X CL	1¾	0.24
S41520CN00	S61520CN00	1½ X 2	2	0.28
S41525CN00	S61525CN00	1½ X 2½	2½	0.36
S41530CN00	S61530CN00	1½ X 3	3	0.48
S41535CN00	S61535CN00	1½ X 3½	3½	0.68
S41540CN00	S61540CN00	1½ X 4	4	0.77
S41550CN00	S61550CN00	1½ X 5	5	0.97
S41560CN00	S61560CN00	1½ X 6	6	1.13
S41580CN00	S61580CN00	1½ X 8	8	1.53
S41510CN00	S61510CN00	1½ X 10	10	1.94
S41512CN00	S61512CN00	1½ X 12	12	2.60
S420CLCN00	S620CLCN00	2 X CL	2	0.38
S42025CN00	S62025CN00	2 X 2½	2½	0.59
S42030CN00	S62030CN00	2 X 3	3	0.62

Nipples



Type 304 Part Number	Type 316 Part Number	Trade Size (in)	Length (in)	Weight per each (lb)
S42035CN00	S62035CN00	2 X 3½	3½	0.88
S42040CN00	S62040CN00	2 X 4	4	0.90
S42050CN00	S62050CN00	2 X 5	5	1.32
S42060CN00	S62060CN00	2 X 6	6	1.46
S42080CN00	S62080CN00	2 X 8	8	2.20
S42010CN00	S62010CN00	2 X 10	10	2.85
S42012CN00	S62012CN00	2 X 12	12	3.02
S425CLCN00	S625CLCN00	2½ X CL	2½	0.84
S42530CN00	S62530CN00	2½ X 3	3	1.00
S42535CN00	S62535CN00	2½ X 3½	3½	1.20
S42540CN00	S62540CN00	2½ X 4	4	1.50
S42550CN00	S62550CN00	2½ X 5	5	1.97
S42560CN00	S62560CN00	2½ X 6	6	2.40
S42580CN00	S62580CN00	2½ X 8	8	3.29
S42510CN00	S62510CN00	2½ X 10	10	4.22
S42512CN00	S62512CN00	2½ X 12	12	5.05
S430CLCN00	S630CLCN00	3 X CL	2 ⅝	1.18
S43030CN00	S63030CN00	3 X 3	3	1.30
S43035CN00	S63035CN00	3 X 3½	3½	1.57
S43040CN00	S63040CN00	3 X 4	4	2.00
S43050CN00	S63050CN00	3 X 5	5	2.60
S43060CN00	S63060CN00	3 X 6	6	3.00
S43080CN00	S63080CN00	3 X 8	8	4.11
S43010CN00	S63010CN00	3 X 10	10	5.28
S43012CN00	S63012CN00	3 X 12	12	6.30
S440CLCN00	S640CLCN00	4 X CL	2 ⅞	1.80
S44040CN00	S64040CN00	4 X 4	4	2.85
S44050CN00	S64050CN00	4 X 5	5	3.80
S44060CN00	S64060CN00	4 X 6	6	4.40
S44080CN00	S64080CN00	4 X 8	8	6.00
S44010CN00	S64010CN00	4 X 10	10	7.75
S44012CN00	S64012CN00	4 X 12	12	9.25

All dimensions are for informational purposes only *Tolerances +/- 5%



Notes





Connectors

Male Connector	28
Rigid Compression Coupling	29
EMT Male Compression	30
EMT Compression Coupling	31
EMT Set Screw Male Connector	32
EMT Set Screw Coupling	33

Stainless Steel Male Compression Connectors

Features:

- Manufactured in type 316 stainless steel to meet any stringent sanitary condition
- Polished with standard “brite” finish to increase corrosion resistance and aesthetic appearance
- Designed for use with stainless rigid and IMC
- Addition of stainless and plastic ferrules assures weatherproof seal
- Connectors assembled with ferrules, no separate pieces to purchase or stock
- No package quantity required



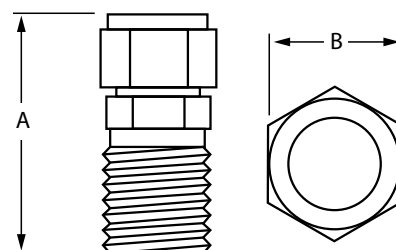
Certifications and Compliances:

- NEMA 4X approved

Applications:

Used to join stainless steel non-threaded conduit to a box, enclosure or other fittings.

Suitable for Damp Locations



Part Number	Trade Size (in)	A Length (in)	B (OD) (in)	Weight per each (lb)
S60500MC00	½	1.710	1.200	0.180
S60700MC00	¾	1.880	1.450	0.280
S61000MC00	1	2.030	1.750	0.400
S61200MC00	1¼	2.780	2.050	0.522
S61500MC00	1½	2.350	2.390	0.700
S62000MC00	2	2.600	2.900	1.120

All dimensions are for informational purposes only *Tolerances +/- 5%

Stainless Steel Male Compression Coupling

Features:

- Manufactured in type 316 stainless steel for increased corrosion resistance
- Polished with standard “brite” finish to increase corrosion resistance and aesthetic appearance
- Designed for use with stainless rigid and IMC
- Addition of stainless and plastic ferrules assures weatherproof seal
- Connectors assembled with ferrules, no separate pieces to purchase or stock
- No package quantity required

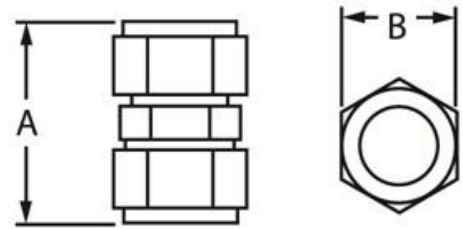


Certifications and Compliances:

- NEMA 4X approved

Applications:

Used to join two lengths of stainless steel conduit.



Part Number	Trade Size (in)	A Length (in)	B OD (in)	ID (in)	Weight per each (lb)
S60500CC00	½	2.150	1.200	0.840	0.260
S60700CC00	¾	2.430	1.450	1.050	0.420
S61000CC00	1	2.650	1.750	1.315	0.600
S61200CC00	1 ¼	2.780	2.050	1.660	0.750
S61500CC00	1½	3.000	2.390	1.900	1.060
S62000CC00	2	3.000	3.000	2.375	1.760

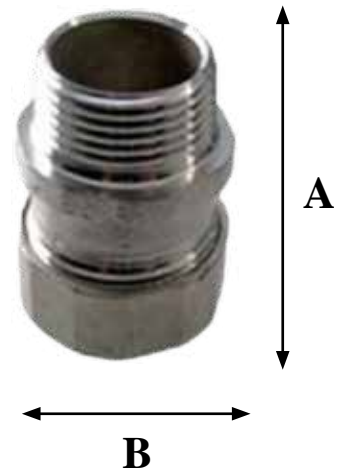
All dimensions are for informational purposes only *Tolerances +/- 5%



Stainless Steel EMT Male Compression Connector

Features:

- Manufactured in type 316 stainless steel for increased corrosion resistance
- Polished with standard “brite” finish to increase corrosion resistance and aesthetic appearance
- Designed for use with stainless EMT conduit
- Addition of stainless and plastic ferrules assures weatherproof seal
- Connectors assembled with ferrules, no separate pieces to purchase or stock
- No package quantity required

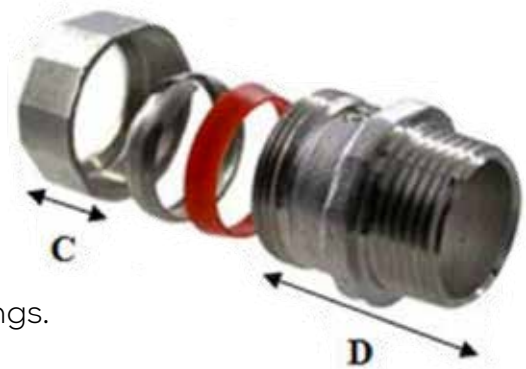


Certifications and Compliances:

- NEMA 4X approved

Materials:

- Body: 316SS
- Stainless Ferrule: 316SS
- Red Ferrule: Plastic



Applications:

Used to join stainless EMT to box, enclosure or other fittings.
Used to join two lengths of stainless EMT.

Part Number	Trade Size (in)	A (in)	B (in)	C (in)	D (in)	Thread Length (in)	Thread OD (in)	Weight per each (lb)
S20500MC00	½	1.620	1.050	0.540	1.260	0.328	0.840	0.16
S20700MC00	¾	1.700	1.250	0.535	1.310	0.430	1.050	0.20
S21000MC00	1	1.800	1.550	0.565	1.470	0.500	1.315	0.23
S21200MC00	1¼	1.850	1.940	0.575	1.500	0.520	1.660	0.33
S21500MC00	1½	2.050	2.250	0.610	1.675	0.630	1.900	0.43
S22000MC00	2	2.140	2.750	0.660	1.820	0.672	2.375	0.58
S22500MC00	2½	2.950	3.390	0.700	2.400	1.190	2.800	1.22
S23000MC00	3	3.180	4.140	0.780	2.590	1.220	2.420	1.95
S24000MC00	4	3.350	5.150	0.790	2.690	1.310	4.420	2.72

All dimensions are for informational purposes only *Tolerances +/- 5%

Stainless Steel EMT Male Compression Coupling

Features:

- Manufactured in type 316 stainless steel for increased corrosion resistance
- Polished with standard “brite” finish to increase corrosion resistance and aesthetic appearance
- Designed for use with stainless EMT conduit
- Addition of stainless and plastic ferrule assures weatherproof seal
- Connectors assembled with ferrules, no separate pieces to purchase or stock
- No package quantity required

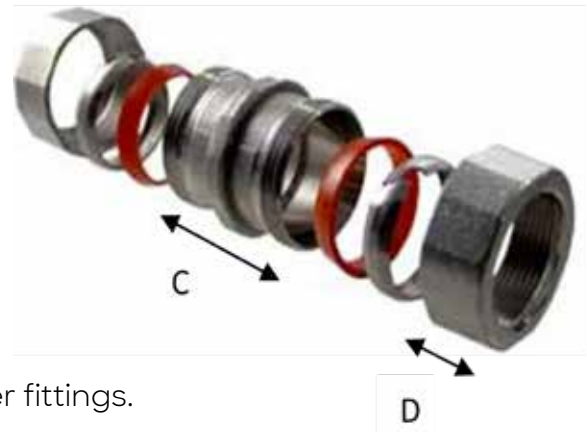


Certifications and Compliances:

- NEMA 4X approved
- NSF/ANSI 169 Certified

Materials:

- Body: 316SS
- Stainless Ferrule: 316SS
- Red Ferrule: Plastic



Applications:

Used to join stainless EMT to box, enclosure or other fittings.
Used to join two lengths of stainless EMT.

Part Number	Trade Size (in)	A (in)	B (in)	C (in)	D (in)	OD (in)	Weight per each (lb)
S20500CC00	½	2.075	1.050	1.350	0.540	0.706	0.16
S20700CC00	¾	2.100	1.250	1.350	0.540	0.922	0.20
S21000CC00	1	2.200	1.550	1.500	0.570	1.163	0.30
S21200CC00	1¼	2.500	1.930	1.770	0.570	1.510	0.48
S21500CC00	1½	2.600	2.250	1.900	0.600	1.740	0.60
S22000CC00	2	2.770	2.750	2.125	0.650	2.200	0.86
S22500CC00	2½	3.450	3.390	2.360	0.710	2.870	1.55
S23000CC00	3	3.420	4.160	2.510	0.820	3.500	2.53
S24000CC00	4	3.600	5.150	2.510	0.800	4.540	3.24

All dimensions are for informational purposes only *Tolerances +/- 5%



Stainless Steel EMT Set Screw Male Connector

Features:

- Manufactured in type 316 stainless steel to meet any stringent sanitary condition
- Polished with standard “brite” finish to increase corrosion resistance and aesthetic appearance
- Type 316 stainless steel locknut included
- Set screw provides fixed alignment and positive ground continuity
- Standard NPT male threads
- Allows easy insertion of grounding conductor for thru or end connection
- Features internal rubber O-rings for protection from water ingress



Applications:

To ground and secure EMT to boxes, enclosures and other threaded fittings.

Part Number	Trade Size (in)	Length (in)	OD (in)	ID (in)	Weight per each (lb)
S20500MCSS	½	1.320	1.005	0.724	0.150
S20700MCSS	¾	1.620	1.270	0.935	0.200
S21000MCSS	1	1.730	1.540	1.173	0.370
S21200MCSS	1¼	1.625	1.750	1.620	0.450
S21500MCSS	1½	1.990	2.062	1.756	0.580
S22000MCSS	2	2.470	2.450	2.215	1.150
S22500MCSS	2½	1.990	2.062	1.756	0.580
S23000MCSS	3	2.470	2.450	2.215	1.150
S24000MCSS	4	2.470	2.450	2.215	1.150

All dimensions are for informational purposes only *Tolerances +/- 5%

Stainless Steel EMT Set Screw Coupling

Features:

- Manufactured in type 316 stainless steel to meet any stringent sanitary condition
- Polished with standard “brite” finish to increase corrosion resistance and aesthetic appearance
- Set screws provide fixed alignment and positive ground continuity
- Allows easy insertion of grounding conductor for thru or end connection
- No package quantity required



Applications:

To ground and secure EMT sections together.

Part Number	Trade Size (in)	Length (in)	OD (in)	ID (in)	Weight per each (lb)
S20500CCSS	½	1.78	0.99	0.71	0.18
S20700CCSS	¾	2.33	1.215	0.935	0.30
S21000CCSS	1	2.92	1.44	1.127	0.46
S21200CCSS	1-¼	3.79	1.795	1.507	0.75
S21500CCSS	1-½	4.36	2.001	1.748	0.89
S22000CCSS	2	5.52	2.481	2.196	1.49
S22500CCSS	2-½	4.32	3.173	2.88	1.69
S22300CCSS	3	5.27	3.8	3.498	2.53
S24000CCSS	4	6.75	4.801	4.509	4.11

All dimensions are for informational purposes only *Tolerances +/- 5%







Conduit Hubs

Stainless Steel Bullet Hubs	36
Stainless Steel Grounding Hubs	37
Stainless Steel Hubs	38

Stainless Steel Bullet Hubs

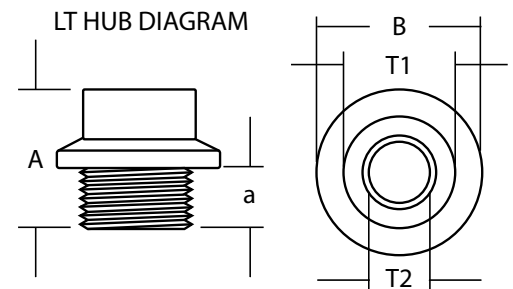
Features:

- Manufactured in type 316 stainless steel to meet any stringent sanitary condition
- Polished with standard “brite” finish to increase corrosion resistance and aesthetic appearance
- Designed for use with stainless threaded conduit
- Use of neoprene O-ring assures weatherproof seal
- Includes a type 316 stainless steel locknut for a secure installation
- No package quantity required



Applications:

To connect threaded stainless conduit to a threadless opening in a box or enclosure in an outdoor or indoor location. To positively bond conduit to a box or enclosure.



Part Number	Trade Size (in)	A (in)	B (in)	a (in)	T1 (in)	T2 (in)	Male Thread OD (in)	Weight per each (lb)
S60500LTV1	½	1.670	1.700	0.620	1.100	0.750	0.840	0.390
S60700LTV1	¾	1.680	1.930	0.675	1.350	0.960	1.050	0.530
S61000LTV1	1	2.070	2.200	0.830	1.600	1.210	1.315	0.750
S61200LTV1	1¼	2.060	2.560	0.850	1.960	1.560	1.660	0.970
S61500LTV1	1½	2.080	2.800	0.870	2.200	1.800	1.900	1.170
S62000LTV1	2	2.100	3.320	0.875	2.730	2.290	2.375	1.650
S62500LTV1	2½	2.720	3.800	0.950	3.310	2.730	2.875	2.250
S63000LTV1	3	2.910	4.500	0.975	3.860	3.350	3.500	3.000
S64000LTV1	4	3.190	5.500	1.090	5.000	4.360	4.500	4.860

All dimensions are for informational purposes only *Tolerances +/- 5%

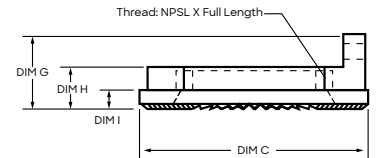
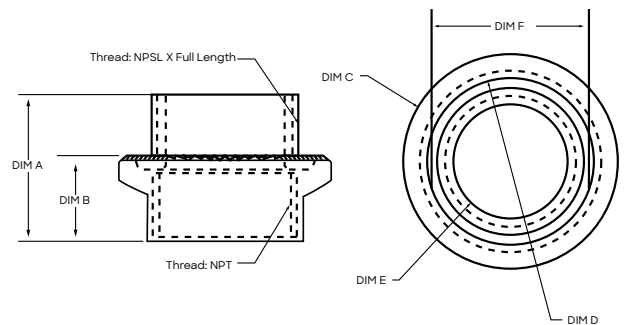
Stainless Steel Grounding Hubs

Features:

- Manufactured in type 316 stainless steel to meet any stringent sanitary condition
- Polished with standard “brite” finish to increase corrosion resistance and aesthetic appearance
- Designed for use with stainless threaded conduit
- Use of neoprene O-ring assures weatherproof seal
- Includes a type 316 stainless steel locknut for a secure installation
- No package quantity required

Applications:

To connect threaded stainless conduit to a threadless opening in a box or enclosure in an outdoor or indoor location. To positively bond conduit to a box or enclosure.



Part Number	Trade Size (in)	A (in)	B (in)	C (in)	D (in)	E (in)	F (in)	G (in)	H (in)	I (in)	Weight per each (lb)
S60500LTV2	1.60	0.91	1.70	1.10	0.59	0.975	0.76	0.44	0.22	0.40	0.390
S60700LTV2	1.66	0.96	1.93	1.33	0.78	1.21	0.87	0.50	0.23	0.54	0.530
S61000LTV2	1.91	1.08	2.20	1.60	1.00	1.48	0.94	0.53	0.25	0.75	0.750
S61200LTV2	1.96	1.12	2.55	1.96	1.30	1.76	1.00	0.55	0.26	0.98	0.970
S61500LTV2	1.96	1.13	2.8	2.20	1.52	2.03	1.03	0.58	0.27	1.14	1.170
S62000LTV2	1.99	1.15	3.31	2.73	1.95	2.55	1.12	0.62	0.28	1.62	1.650
S62500LTV2	2.82	1.60	3.88	3.28	2.26	3.10	1.23	0.66	0.30	2.80	2.250
S64000LTV2	2.81	1.70	4.58	4.00	2.90	3.70	1.33	0.70	0.32	3.82	3.000
S60500LTV2	3.00	1.81	5.58	5.00	3.81	4.72	1.51	0.80	0.36	5.32	4.860

All dimensions are for informational purposes only *Tolerances +/- 5%



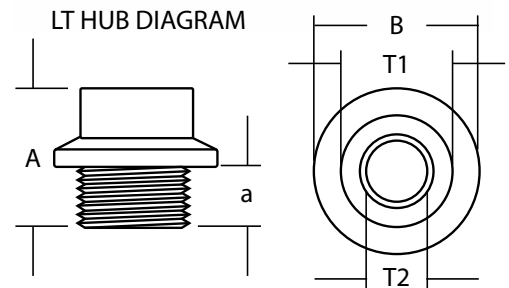
Stainless Steel Hubs

Features:

- Manufactured in type 316 stainless steel to meet any stringent sanitary condition
- Polished with standard “brite” finish to increase corrosion resistance and aesthetic appearance
- Designed for use with stainless threaded conduit
- Use of neoprene O-ring assures weatherproof seal
- Includes a type 316 stainless steel locknut for a secure installation
- No package quantity required

Applications:

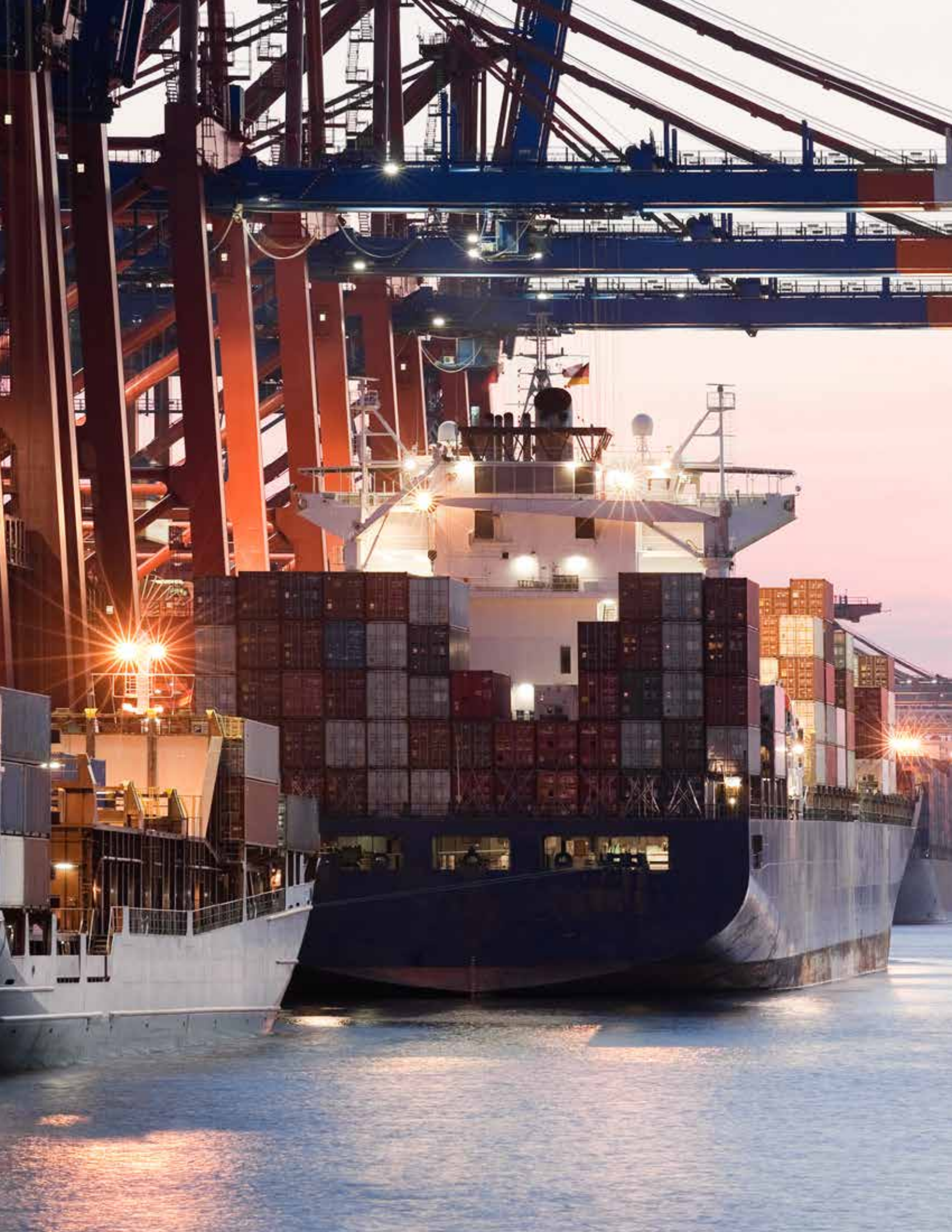
To connect threaded stainless conduit to a threadless opening in a box or enclosure in an outdoor or indoor location. To positively bond conduit to a box or enclosure.



Part Number	Trade Size (in)	A (in)	B (in)	a (in)	T1 (in)	T2 (in)	Male Thread OD (in)	Weight per each (lb)
S60500LT00	½	1.670	1.700	0.620	1.100	0.750	0.840	0.390
S60700LT00	¾	1.680	1.930	0.675	1.350	0.960	1.050	0.530
S61000LT00	1	2.070	2.200	0.830	1.600	1.210	1.315	0.750
S61200LT00	1¼	2.060	2.560	0.850	1.960	1.560	1.660	0.970
S61500LT00	1½	2.080	2.800	0.870	2.200	1.800	1.900	1.170
S62000LT00	2	2.100	3.320	0.875	2.730	2.290	2.375	1.650
S62500LT00	2½	2.720	3.800	0.950	3.310	2.730	2.875	2.250
S63000LT00	3	2.910	4.500	0.975	3.860	3.350	3.500	3.000
S64000LT00	4	3.190	5.500	1.090	5.000	4.360	4.500	4.860

All dimensions are for informational purposes only *Tolerances +/- 5%

Notes



Conduit Bodies



Conduit Bodies

LB Body	43
T Body	43
LL Body	44
LR Body	44
TB Body	45
C Body	45
X Body	46
Conduit Body Cover, Gasket and Screw Set	47



Stainless Steel Conduit Bodies

Features:

- Manufactured in type 316 stainless steel to meet any stringent sanitary condition
- Polished with standard “brite” finish to increase corrosion resistance and aesthetic appearance
- Solid stainless construction permits easy installation using ordinary hand tools
- The flat back design allows extra wiring capacity
- No package quantity required
- Cover and Gasket set included
- Form 8 style

Materials:

- Body: 316SS
- Gasket: Neoprene
- Cover and Screws: 316SS

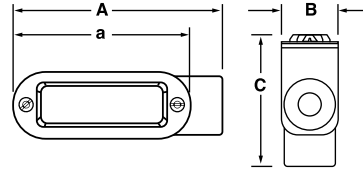
Applications:

To connect and change direction of conduit runs. Can be used as pulling fittings. Accessible wiring chamber provides a spacious location to make splices.

Stainless Steel LB Conduit Bodies

Certifications and Compliances:

- UL/cUL 514A Listed
- UL File # E307133
- CSA C22.2 No. 18.1
- Article 314 of ANSI/NFPA 70, National Electrical Code (NEC)
- Approved for wet locations (when installed with Cover and Gasket)

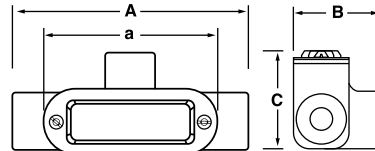


Part Number	Trade Size (in)	A (in)	B (in)	C (in)	a (in)	Cubic Inches (in)	Weight per each (lb)
S60500LB00	½	5.132	1.320	2.510	4.320	4	0.95
S60700LB00	¾	5.739	1.550	2.929	4.950	7	1.25
S61000LB00	1	6.673	1.750	3.025	5.650	11	1.80
S61200LB00	1¼	7.635	2.200	3.925	6.600	20	2.90
S61500LB00	1½	8.868	2.530	4.150	7.810	35	4.25
S62000LB00	2	11.274	3.460	4.478	10.00	71	7.75
S62500LB00	2½	13.612	4.650	6.237	12.00	157	13.10
S63000LB00	3	13.695	4.650	6.320	12.00	177	13.75
S64000LB00	4	16.420	5.850	7.770	14.63	380	29.25

Stainless Steel T Conduit Bodies

Certifications and Compliances:

- UL / cUL 514A Listed
- UL File # E307133
- Article 314 of ANSI/NFPA 70, National Electrical Code (NEC)
- CSA C22.2 No. 18.1
- Canadian Electrical Code (CEC), Part 1, Standard for Electrical Installations
- Approved for wet locations



Part Number	Trade Size (in)	A (in)	B (in)	C (in)	a (in)	Cubic Inches (in)	Weight per each (lb)
S60500TE00	½	5.940	2.132	2.030	4.320	5	1.280
S60700TE00	¾	6.538	2.474	2.320	4.940	9	1.890
S61000TE00	1	7.488	2.735	2.330	5.688	13	2.500
S61200TE00	1¼	8.730	3.280	2.900	6.600	24	3.500
S61500TE00	1½	9.923	3.585	3.000	7.810	35	5.000
S62000TE00	2	12.300	4.700	3.880	10.000	77	9.820
S62500TE00	2½	15.290	6.200	4.550	12.000	160	14.320
S63000TE00	3	15.330	6.280	4.520	12.000	177	15.000
S64000TE00	4	18.340	7.610	5.930	14.630	382	30.000

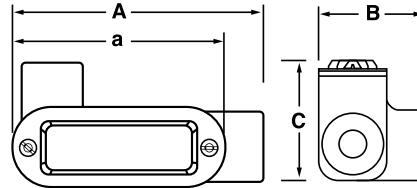
All dimensions are for informational purposes only *Tolerances +/- 5%



Stainless Steel LL Conduit Bodies

Certifications and Compliances:

- UL 514A Listed
- UL File # E307133
- CSA C22.2 No. 18.1
- Intended for installation in accordance with Article 314 of ANSI/NFPA 70, National Electrical Code (NEC)
- Approved for wet locations



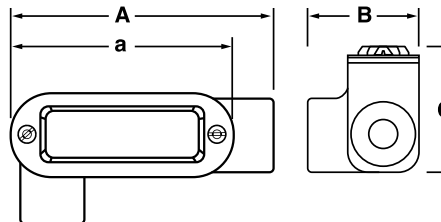
Part Number	Trade Size (in)	A (in)	B (in)	C (in)	a (in)	Cubic Inches (in)	Weight per each (lb)
S60500LL00	½	5.132	2.132	1.700	4.320	4	1.00
S60700LL00	¾	5.739	2.474	1.975	4.950	7	1.40
S61000LL00	1	6.680	2.790	2.225	5.650	11	2.00
S61500LL00	1½	8.868	3.585	3.095	7.810	35	4.40
S62000LL00	2	11.274	4.610	3.353	10.00	71	6.85

All dimensions are for informational purposes only *Tolerances +/- 5%

Stainless Steel LR Conduit Bodies

Certifications and Compliances:

- UL 514A Listed
- UL File # E307133
- CSA C22.2 No. 18.1
- Intended for installation in accordance with Article 314 of ANSI/NFPA 70, National Electrical Code (NEC)
- Approved for wet locations



Part Number	Trade Size (in)	A (in)	B (in)	C (in)	a (in)	Cubic Inches (in)	Weight per each (lb)
S60500LR00	½	5.132	2.132	1.700	4.320	4	1.00
S60700LR00	¾	5.739	2.474	1.975	4.950	7	1.40
S61000LR00	1	6.680	2.790	2.225	5.650	11	2.00
S61500LR00	1½	8.868	3.585	3.095	7.810	35	4.40
S62000LR00	2	11.274	4.610	3.353	10.00	71	6.85

All dimensions are for informational purposes only *Tolerances +/- 5%

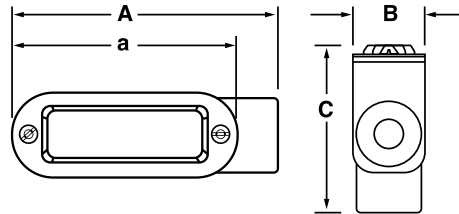
Conduit Bodies

Atkore
Calbrite

Stainless Steel TB Conduit Bodies

Certifications and Compliances:

- UL 514A Listed
- UL File # E307133
- CSA C22.2 No. 18.1
- Intended for installation in accordance with Article 314 of ANSI/NFPA 70, National Electrical Code (NEC)
- Approved for wet locations



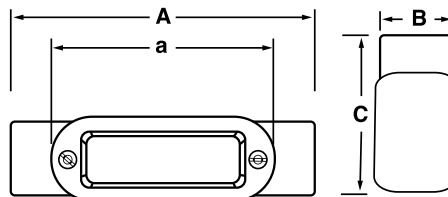
Part Number	Trade Size (in)	A (in)	B (in)	C (in)	a (in)	Cubic Inches (in)	Weight per each (lb)
S60500TB00	½	5.994	1.350	2.847	4.320	5	1.100
S60700TB00	¾	6.538	1.550	3.215	4.950	9	1.750
S61000TB00	1	7.690	1.750	3.234	5.650	13	2.250
S61500TB00	1½	9.923	2.530	4.150	7.810	35	5.250
S62000TB00	2	12.554	3.500	4.500	10.000	77	7.900

All dimensions are for informational purposes only *Tolerances +/- 5%

Stainless Steel C Conduit Bodies

Certifications and Compliances:

- UL 514A Listed
- UL File # E307133
- CSA C22.2 No. 18.1
- Intended for installation in accordance with Article 314 of ANSI/NFPA 70, National Electrical Code (NEC)
- Approved for wet locations



Part Number	Trade Size (in)	A (in)	B (in)	C (in)	a (in)	Cubic Inches (in)	Weight per each (lb)
S60500CE00	½	5.994	1.320	1.700	4.320	5	1.150
S60700CE00	¾	6.538	1.550	1.975	4.950	9	1.600
S61000CE00	1	7.690	1.750	2.225	5.650	13	2.050
S61200CE00	1¼	8.695	2.170	2.630	6.530	24	3.150
S61500CE00	1½	9.898	2.530	3.095	7.810	35	4.500
S62000CE00	2	12.554	3.460	3.353	10.000	77	8.200

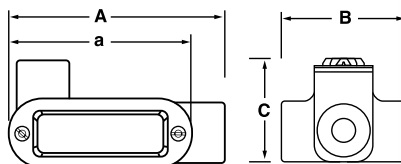
All dimensions are for informational purposes only *Tolerances +/- 5%



Stainless Steel X Conduit Bodies

Certifications and Compliances:

- UL 514A Listed
- UL File # E307133
- Intended for installation in accordance with Article 314 of ANSI/NFPA 70, National Electrical Code (NEC)
- Approved for wet locations



Part Number	Trade Size (in)	A (in)	B (in)	C (in)	a (in)	Cubic Inches (in)	Weight per each (lb)
S60500XB00	1/2	5.994	2.944	2.050	4.320	5	1.350
S60700XB00	3/4	6.538	3.398	2.300	4.950	9	1.800
S61000XB00	1	7.690	3.910	2.450	5.650	13	2.700
S61500XB00	1 1/2	9.923	4.640	3.060	7.810	35	4.850
S62000XB00	2	12.554	5.810	3.700	10.000	77	9.350

All dimensions are for informational purposes only *Tolerances +/- 5%

Conduit Bodies

Conduit Body Cover, Gasket and Screw Set

Features:

- Manufactured in type 316 stainless steel to meet any stringent sanitary condition
- Polished with standard “brite” finish to increase corrosion resistance and aesthetic appearance
- Solid stainless construction permits easy installation using ordinary hand tools

Certifications and Compliances:

- UL 514A Listed
- UL File # E307133
- Intended for installation in accordance with Article 314 of ANSI/NFPA 70, National Electrical Code (NEC)
- Approved for wet locations



Features:

- Body: 316SS
- Gasket: Neoprene
- Cover and Screws: 316SS

Applications:

The conduit body cover, gasket and screw set is a replacement for those provided with a conduit body.

Part Number	Length (in)	Width (in)	Height (in)	Bolt Size (in)	Center Hole to Center Hole (in)	Weight (lb)
S60500CG00	4.320	1.325	.025	6-32	3.750	0.12
S60700CG00	4.940	1.570	.025	6-32	4.340	0.17
S61000CG00	5.690	1.730	.025	6-32	5.070	0.20
S61200CG00	6.600	2.150	.025	6-32	5.800	0.30
S61500CG00	7.810	2.550	.025	6-32	7.140	0.38
S62000CG00	10.00	3.480	.025	6-32	9.300	0.62
S62500CG00	12.00	4.620	.025	6-32	11.31	1.24
S63000CG00	12.00	4.620	.025	6-32	11.31	1.24
S64000CG00	14.63	5.830	.025	6-32	16.05	1.91

All dimensions are for informational purposes only *Tolerances +/- 5%



Device Boxes & Covers



Device Boxes & Covers

FD & FS Single Gang Box	51
FDC Double Gang Box	51
FDC Single Gang Box	52
In-Use Covers	52
FSCT & FDCT Gang Box	53
FDCC & FSCC Single Gang Box	53
FDX & FSX Single Gang Box	54
Weatherproof Device Box Covers	55
Single & Double Gang Blank Covers	56



Device Boxes & Covers

Features:

- Manufactured in type 316 stainless steel for increased corrosion resistance
- Polished with standard “brite” finish to increase corrosion resistance and aesthetic appearance
- Machined standard NPT threads
- Internal grounding screw included
- Manufactured with mounting feet
- No package quantity required

Applications:

Used for wiring devices, such as switches and receptacles.

Device Boxes & Covers

Stainless Steel FD and FS Device Boxes

Certifications and Compliances:

- UL File # E307133
- UL/cUL 514A Listed
- CSA c22.2 No. 18.1-04
- UL File # E307133
- Intended for installation in accordance with Article 314 ANSI/NFPA 70, National Electrical Code (NEC)
- Intended for installation in accordance with CAN/CSA-C22.1, "Canadian Electrical Code, Part I"



Part Number	Trade Size (in)	Overall Length (in)	Overall Width (in)	Depth (in)	Cubic (in)	Center Hole to Center Hole (in)	Mounting Feet Hole Diameter (in)	Weight per each (lb)
S60700FD00	¾	5.430	2.850	0.750	25	3.250	⅝	2.38
S60700FS00	¾	5.430	2.850	0.870	18	3.250	⅝	2.06

All dimensions are for informational purposes only *Tolerances +/- 5%

Stainless Steel FDC Double Gang Boxes

Certifications and Compliances:

- UL File # E307133
- UL/cUL 514A Listed
- Intended for installation in accordance with Article 314 of ANSI/NFPA 70, National Electrical Code (NEC)



Part Number	Trade Size (in)	Overall Length (in)	Overall Width (in)	Depth (in)	Cubic (in)	Center Hole to Center Hole (in)	Mounting Feet Hole Diameter (in)	Weight per each (lb)
S60700FDCD	¾	6.000	4.670	2.500	45	3.300	⅝	3.57
S61000FDCD	1	6.320	4.670	2.500	45	3.300	⅝	3.95

All dimensions are for informational purposes only *Tolerances +/- 5%



Stainless Steel FDC Single Gang Boxes

Certifications and Compliances:

- UL File # E307133
- UL/cUL 514A Listed
- Intended for installation in accordance with Article 314 of ANSI/NFPA 70, National Electrical Code (NEC)



Part Number	Trade Size (in)	Overall Length (in)	Overall Width (in)	Depth (in)	Cubic (in)	Center Hole to Center Hole (in)	Mounting Feet Hole Diameter (in)	Weight per each (lb)
S60700FDCS	¾	6.250	2.850	2.650	25	3.250	⅝ ₁₆	2.48
S61000FDCS	1	6.300	2.850	2.650	25	3.250	⅝ ₁₆	3.10

All dimensions are for informational purposes only *Tolerances +/- 5%

Stainless Steel In-Use Covers

Certifications and Compliances:

- UL File # E307133
- UL Listed UL514D, UL 50E
- CSA C22.2 No. 42.1-13, 94.2-15
- NEMA 4X



Part Number	Description	Length (in)	Width (in)	Overall Depth (in)	Cover Depth (in)	Box Depth (in)	Weight per each (lb)
S60000FVCS	GFCI SHALLOW	6.00	3.200	3.500	2.000	1.900	2.700
S60000FVCD	GFCI DEEP	6.00	3.200	5.500	5.000	1.900	3.600
S60000FV2S	GFCI SHALLOW DBL GANG	6.00	5.125	3.500	2.000	1.900	3.600
S60000FVRS	RECEPT SHALLOW	6.00	3.200	3.500	2.000	1.900	2.700
S60000FVRD	RECEPT DEEP	6.00	3.200	5.500	5.000	1.900	3.600

All dimensions are for informational purposes only *Tolerances +/- 5%

Device Boxes & Covers

Stainless Steel FSCT & FDCT Gang Boxes

Certifications and Compliances:

- UL File # E307133
- UL/cUL 514A Listed
- Intended for installation in accordance with Article 314 of ANSI/NFPA 70, National Electrical Code (NEC)



Part Number	Trade Size (in)	Overall Length (in)	Overall Width (in)	Depth (in)	Cubic (in)	Center Hole to Center Hole (in)	Mounting Feet Hole Diameter (in)	Weight per each (lb)
S60700FDCT	¾	6.250	3.650	2.670	25	3.250	⅝	2.620
S60700FSCT	¾	6.250	3.650	2.000	18	3.250	⅝	2.240

All dimensions are for informational purposes only *Tolerances +/- 5%

Stainless Steel FDCC & FSCT Single Gang Boxes

Certifications and Compliances:

- UL File # E307133
- UL/cUL 514A Listed
- Intended for installation in accordance with Article 314 of ANSI/NFPA 70, National Electrical Code (NEC)



Part Number	Trade Size (in)	Overall Length (in)	Overall Width (in)	Depth (in)	Cubic (in)	Center Hole to Center Hole (in)	Mounting Feet Hole Diameter (in)	Weight per each (lb)
S60700FDCC	¾	5.900	2.850	2.650	25	3.250	⅝	2.44
S60700FSCT	¾	5.900	2.850	2.000	18	3.250	⅝	2.20

All dimensions are for informational purposes only *Tolerances +/- 5%



Stainless Steel FDX & FSX Single Gang Boxes

Certifications and Compliances:

- UL Listed UL514D, UL 50E
- File # E307133
- Intended for installation in accordance with Article 314 of ANSI/NFPA 70, National Electrical Code (NEC)



Part Number	Trade Size (in)	Overall Length (in)	Overall Width (in)	Depth (in)	Cubic (in)	Center Hole to Center Hole (in)	Mounting Feet Hole Diameter (in)	Weight per each (lb)
S60700FDX0	¾	6.25	4.120	2.670	25	3.250	⅝	2.56
S60700FSX0	¾	6.25	4.120	2.000	18	3.250	⅝	2.22

All dimensions are for informational purposes only *Tolerances +/- 5%



Device Boxes & Covers

Stainless Steel Weatherproof Device Box Covers

Features:

- Manufactured in type 316 stainless steel for increased corrosion resistance
- Polished with standard “brite” finish to increase corrosion resistance and aesthetic appearance
- Mounts to all Calbrite stainless steel device boxes
- Neoprene gaskets included
- Approved for use in damp environments
- No package required

Certifications and Compliances:

- UL Listed UL514D, UL 50E
- File # E307133
- CSA C22.2 No. 42.1-13, 94.2-15
- NEMA 3R

Materials:

- Body: 316SS
- Gaskets: Neoprene

Applications:

UL Listed for wet locations. These heavy-duty stainless steel single gang covers are used for switches and GFCI receptacles, and provide high strength, superior corrosion resistance, and wide temperature ranges for use in harsh environments. The spring loaded, self-closing lids cover with neoprene gasket and stainless steel spring provide weatherproof protection.



Part Number	Overall Length (in)	Overall Width (in)	Depth (in)	Center Hole to Center Hole (in)	Mounting Feet Hole Diameter (in)	Weight per each (lb)
S60000GFCI	4.50	2.810	0.625	3.250	5/16	1.000
S60000VTSO	4.50	2.810	1.000	3.250	5/16	1.100
S60000VDRO	4.50	2.810	0.625	3.250	5/16	1.000

All dimensions are for informational purposes only *Tolerances +/- 5%



Stainless Steel Single & Double Gang Blank Covers



Features:

- Manufactured in 316 stainless steel to meet any stringent sanitary condition
- Polished with standard “brite” finish to increase corrosion resistance and aesthetic appearance
- Equipped with stainless steel screws included
- Made of .032” thick stainless steel
- Vinyl gasket included
- No package quantity required



Certifications and Compliances:

- UL514 Listed
- CSA Certified
- Dustproof

Applications:

Calbrite’s polished, dust-proof stainless steel covers and plates are designed for use in corrosive and harsh environments. Fits all Calbrite stainless steel Device Box configurations.

Note: Not suitable for wet locations. Please see Calbrite’s In-Use Covers for requirements in damp environments.

Part Number
Single Gang
S607BLPLTSSS
Double Gang
S607BLPLTD

Notes



Hazardous Location Fittings



Hazardous Location Fittings

UNY Union	60
GUAT Conduit Outlet Box w/ Cover	61
GUAX Conduit Outlet Box w/ Cover	62
EYS Conduit Sealing Fitting	63

Stainless Steel UNY Union

Features:

- Manufactured in type 316 stainless steel to meet any stringent sanitary condition
- Polished with standard “brite” finish to increase corrosion resistance and aesthetic appearance
- Explosion proof, dust-ignition proof
- Designed for use with stainless steel threaded conduit
- NPT male threads and machined tapered female threads for smooth bore inside diameter
- No package quantity required



Certifications and Compliances:

- UL 1203 Listed
- UL File # E465422
- CSA C22.2 Listed
- Suitable for use in:
Class I, Div. 1 & 2, Groups A, B, C & D
Class II, Div. 1, Groups E, F & G
Class II, Div. 2, Groups F & G
Class III

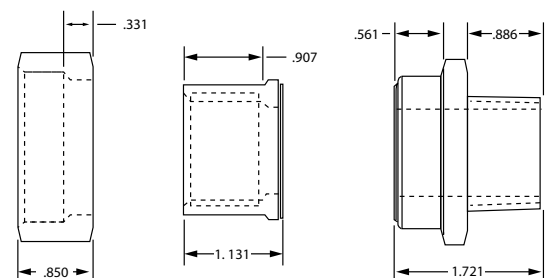
Applications:

Calbrite’s stainless steel UNY’s are used in hazardous areas to join and connect conduit and/or other conduit fittings. Allows for simplified installations by eliminating disassembly of the conduit or fittings with the one piece design.



Part Number	Overall Length (in)	Overall Width (in)	Thread Length (in)	Weight per each (lb)
S60700UNY0	2.700	1.900	0.635	0.750
S61000UNY0	2.825	2.200	0.750	0.960

All dimensions are for informational purposes only *Tolerances +/- 5%



Hazardous Location Fittings

Stainless Steel GUAT Conduit Outlet Box with Cover

Features:

- Manufactured in type 316 stainless steel to meet any stringent sanitary condition
- Polished with standard “brite” finish to increase corrosion resistance and aesthetic appearance
- Explosion proof, dust-ignition proof
- Designed for use with stainless steel threaded conduit
- Machined tapered female threads for smooth bore inside diameter
- Tightening “Ears” cast into cover to allow for easy tightening and removal
- Grounding screw provided
- Neoprene O-ring included
- No package quantity required

Certifications and Compliances:

- UL 1203 Listed
- UL File # E468171
- CSA C22.2 Listed
- Suitable for use in:
Class I, Div. 1 & 2, Groups A, B, C & D
Class II, Div. 1, Groups E, F & G
Class II, Div. 2, Groups F & G
Class III



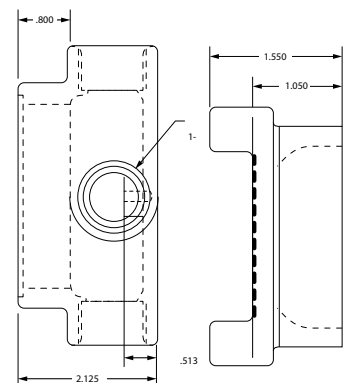
Applications:

Calbrite’s stainless steel GUAT conduit outlet boxes are designed for use in hazardous areas and harsh environments to act as pull and splice boxes, to join and connect conduit and/or other conduit fittings, allow for changes in conduit direction and easy access for maintenance and future system changes or upgrades.



Part Number	Trade Size (in)	Overall Length (in)	Overall Width (in)	Overall Height (in)	Weight per each (lb)
S60700GUAT	¾	4.750	4.200	3.020	3.600
S61000GUAT	1	5.080	4.350	3.100	3.820

All dimensions are for informational purposes only *Tolerances +/- 5%



Stainless Steel GUAX Conduit Outlet Box with Cover

Features:

- Manufactured in type 316 stainless steel to meet any stringent sanitary condition
- Polished with standard "brite" finish to increase corrosion resistance and aesthetic appearance
- Explosion proof, dust-ignition proof
- Designed for use with stainless steel threaded conduit
- Machined tapered female threads for smooth bore inside diameter
- Tightening "Ears" cast into cover to allow for easy tightening and removal
- Grounding screw provided
- Neoprene O-ring included
- No package quantity required



Certifications and Compliances:

- UL 1203 Listed
- UL File # E468171
- CSA C22.2 Listed
- Suitable for use in:
Class I, Div. 1 & 2, Groups A, B, C & D
Class II, Div. 1, Groups E, F & G
Class II, Div. 2, Groups F & G
Class III

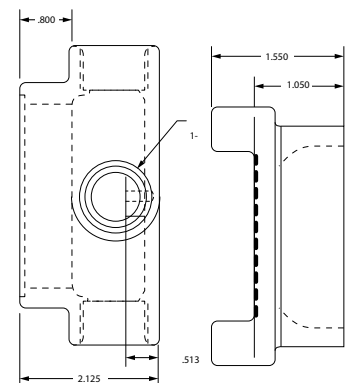
Applications:

Calbrite's stainless steel GUAX conduit outlet boxes are designed for use in hazardous areas and harsh environments to act as pull and splice boxes, to join and connect conduit and/or other conduit fittings, allow for changes in conduit direction and easy access for maintenance and future system changes or upgrades.



Part Number	Trade Size (in)	Overall Length (in)	Overall Width (in)	Overall Height (in)	Weight per each (lb)
S60700GUAX	¾	4.750	4.750	3.020	3.640
S61000GUAX	1	5.080	5.080	3.100	4.060

All dimensions are for informational purposes only *Tolerances +/- 5%



Hazardous Location Fittings

Stainless Steel EYS Conduit Sealing Fitting

Features:

- Manufactured in type 316 stainless steel to meet any stringent sanitary condition
- Polished with standard “brite” finish to increase corrosion resistance and aesthetic appearance
- Explosion proof, dust-ignition proof
- Designed for use with stainless steel threaded conduit
- Machined tapered female threads for smooth bore inside diameter
- Designed for use with vertical and horizontal installations
- Large opening for easy packing and setup of sealing compound and fiber dam
- No package quantity required



Certifications and Compliances:

- UL 1203 Listed
- UL File # E465422
- CSA C22.2 Listed
- Suitable for use in:
Class I, Div. 1 & 2, Groups A, B, C & D
Class II, Div. 1 & 2, Groups E, F & G
Class III Hazardous Locations

Applications:

Calbrite’s stainless steel EYS (Seal-Off) fittings are designed for use in hazardous areas and harsh environments for both horizontal and vertical installations. Used to prevent possible explosions from occurring through conduit systems and igniting outside atmospheres. When properly installed and filled with a UL-listed sealing compound, they create a physical barrier that limits the passage of vapors and gases throughout the conduit system.



Part Number	Trade Size (in)	Overall Length (in)	Overall Width (in)	Overall Height (in)	Sealing Compound Required (oz)	Sm. Plug Hole Opening (in)	Lg. Plug Hole Opening (in)	Weight per each (lb)
S60700EYS0	¾	3.500	1.380	2.100	1¾	0.470	0.920	0.880
S61000EYS0	1	3.760	1.650	2.370	2	0.470	0.920	1.180

All dimensions are for informational purposes only *Tolerances +/- 5%





Expansion Fittings

Atkore[™]
Calbrite



Expansion Fittings

Expansion Deflection Fitting

66



Stainless Steel Expansion Deflection Fitting

Features:

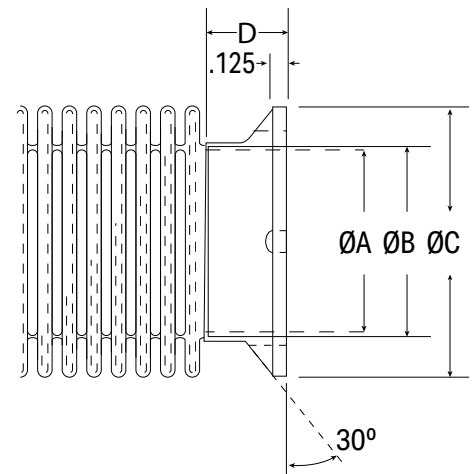
- Manufactured in type 316 stainless steel to meet any stringent sanitary condition
- One piece compact design

Certifications and Compliances:

- UL Verified
- Expansion Travel for the fitting is verified to be 1.5 inches
- Offset Deflection was verified for a total distance of 1.5 inches
- Angular Misalignment was verified to 90 degrees allowing the fitting to be used as an elbow anywhere from 30-90 degrees

Applications:

Calbrite's Expansion/Deflection Fittings couple two sections of Conduit in applications that are subject to movement, expansion, contraction, deflection or angular/parallel misalignment. Ideal for long conduit runs, and provide excellent resistance to damage and corrosion. The ground connection is maintained without the need for an external bonding jumper.



Part Number	Trade Size (in)	A (in)	B (in)	C (in)	D (in)	Overall Length (in)	Weight per each (lb)
S60500EXDF	½	0.860	0.860	1.700	0.590	12.750	1.050
S60700EXDF	¾	1.070	1.070	1.930	0.590	11.500	1.500
S61000EXDF	1	1.330	1.330	2.200	0.740	11.500	1.650
S61200EXDF	1¼	1.680	1.680	2.570	0.740	11.750	2.400
S61500EXDF	1½	1.920	1.920	2.800	0.740	12.000	2.550
S62000EXDF	2	2.390	2.390	3.330	0.740	12.000	3.850
S62500EXDF	2½	2.890	2.890	3.910	1.130	12.500	6.550
S63000EXDF	3	3.520	3.520	4.600	1.130	13.000	8.850
S64000EXDF	4	4.520	4.520	5.600	1.130	13.500	12.200

All dimensions are for informational purposes only *Tolerances +/- 5%

Notes



Flex Conduit & Fittings



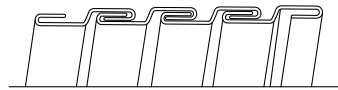
Flex Conduit & Fittings

Bare Flexible Conduit	70
PVC Coated Flexible Conduit	71
Clear Coated Flexible Conduit	72
Flex 90° Connectors	73
Flex Straight Connectors	74
Flex 45° Connectors	75
Flex to Rigid Connectors	76
Stainless Steel Low Smoke Zero Halogen Flexible Conduit	77
Flameproof Barrier Gland	78
Hygienic Liquid Tight Conduit	80
Hygienic Flex Fitting	81

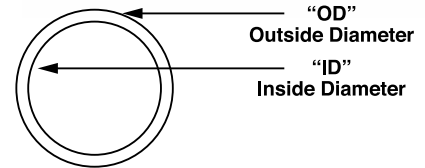
Stainless Steel Bare Flexible Conduit

Features:

- Manufactured in type 316 stainless steel for increased corrosion resistance
- Polished with standard “brite” finish to increase corrosion resistance and aesthetic appearance
- Extremely flexible and durable, with smooth interior ease of installation and wire pull-through
- Compatible with Calbrite™ stainless steel flex connectors and 90’s
- Interlock (double buckle) style
- Manufactured in 25’ coils



Double Buckle



Applications:

Flexible stainless steel conduit can be used for protecting electronic and electrical wires and cable. Suitable for corrosive environments, including pumps, motors, HVAC systems, machine tools, electrical housings and cabinetry. Good absorption of motion and vibration.

Part Number	Trade Size (in)	Outside Diameter (in)	Inside Diameter (in)	Bend Radius (in)	Weight per 25' Coil (lb)
S60500CTFX	½	0.770	0.650	4	4.00
S60700CTFX	¾	0.975	0.840	4½	6.00
S61000CTFX	1	1.210	1.020	6	7.00
S61200CTFX	1¼	1.560	1.400	7½	10.00
S61500CTFX	1½	1.750	1.620	9	10.50
S62000CTFX	2	2.200	2.000	10	14.00

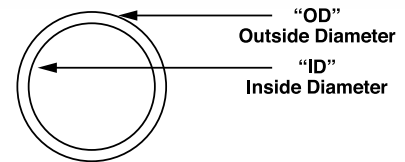
All dimensions are for informational purposes only *Tolerances +/- 5%

Flex Conduit & Fittings

Stainless Steel PVC Coated Flexible Conduit

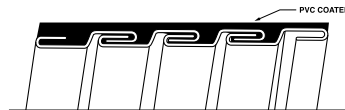
Features:

- The addition of the PVC coated jacket extruded over a 316 stainless steel core, allows for greater resistance to a wide range of corrosion, oils, greases and contaminants
- Interlock (double buckle) style
- Extremely flexible and durable, with smooth interior ease of installation and wire pull through
- Approx. temperature rating of 0°F to 275°F (PVC Coating)
- Approved for damp locations when used with Calbrite Flex Connectors
- Manufactured in 25' coils



Certifications and Compliances:

- NEMA 4X approved



Double Buckle



Applications:

Flexible stainless steel conduit can be used for protecting electronic and electrical wires and cable. Suitable for corrosive environments, including pumps, motors, HVAC systems, machine tools, electrical housings and cabinetry. Good absorption of motion and vibration.

Part Number	Trade Size (in)	Outside Diameter (in)	Inside Diameter (in)	Bend Radius (in)	Weight per 25' Coil (lb)
S60500CTFC	1/2	0.840	0.650	4 1/2	6.00
S60700CTFC	3/4	1.050	0.840	6	8.00
S61000CTFC	1	1.300	1.020	10	11.00
S61200CTFC	1 1/4	1.700	1.400	11	13.00
S61500CTFC	1 1/2	1.900	1.620	12	19.00
S62000CTFC	2	2.400	2.000	14	26.00

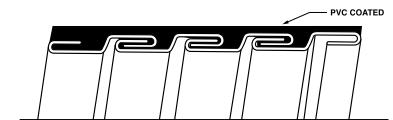
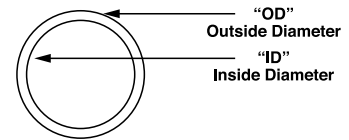
All dimensions are for informational purposes only *Tolerances +/- 5%



Stainless Steel Clear Coated Flexible Conduit

Features:

- The addition of the PVC coated jacket extruded over a 316 stainless steel core, allows for greater resistance to a wide range of corrosion, oils, greases and contaminants
- The clear coating allows for visibility of the stainless core in the corrosive environment
- Interlock (double buckle) style
- Extremely flexible and durable, with smooth interior ease of installation and wire pull-through
- Approx. temperature rating of 0°F to 275°F (PVC Coating)
- Approved for damp locations when used with Calbrite Flex Connectors
- Manufactured in 25' coils



Double Buckle

Certifications and Compliances:

- NEMA 4X approved

Applications:

Flexible stainless steel conduit can be used for protecting electronic and electrical wires and cable. Suitable for corrosive environments, including pumps, motors, HVAC systems, machine tools, electrical housings and cabinetry. Good absorption of motion and vibration.

Part Number	Trade Size (in)	Outside Diameter (in)	Inside Diameter (in)	Bend Radius (in)	Weight per 25' Coil (lb)
S60500CTCC	1/2	0.840	0.650	4 1/2	6.00
S60700CTCC	3/4	1.050	0.840	6	8.00
S61000CTCC	1	1.300	1.050	10	11.00
S61200CTCC	1 1/4	1.700	1.400	11	13.00
S61500CTCC	1 1/2	1.900	1.620	12	16.00
S62000CTCC	2	2.400	2.000	14	24.00

All dimensions are for informational purposes only *Tolerances +/- 5%

Flex Conduit & Fittings

Stainless Steel Flex 90° Connectors

Features:

- Manufactured in type 316 stainless steel for increased corrosion resistance
- Excellent strength and durability
- Polished with standard “brite” finish to increase corrosion resistance and aesthetic appearance
- Approved for damp locations when used with Calbrite’s PVC and Clear Coated flex conduit
- Neoprene O-ring and type 316 stainless steel locknut included
- NPT threads
- No package quantity required

Certifications and Compliances:

- NEMA 4X approved
- Temperature Ratings:
 - Stainless steel body – approx. 1700°F
 - Internal insulated throat (gray) – approx. 350°F
 - Internal plastic ferrule (white) – approx. 450°F
 - Neoprene O-ring – approx. 600°F

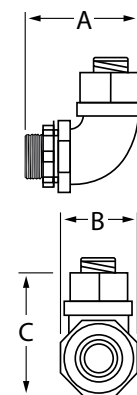
Applications:

Used to connect stainless flexible conduit to other fittings at 90°. Assists in preventing contamination of oils, dirt, dust, and liquid when used with Calbrite PVC coated stainless flexible conduit. Flexible stainless steel conduit can be used for protecting electronic and electrical wires and cable. Suitable for corrosive environments, including pumps, motors, HVAC systems, machine tools, electrical housings and cabinetry.



Part Number	Trade Size (in)	A (in)	B (in)	C (in)	Weight per each (lb)
S60500FC90	½	1.880	1.250	1.950	0.27
S60700FC90	¾	2.300	1.520	2.290	0.50
S61000FC90	1	2.850	1.800	2.850	0.70
S61200FC90	1 ¼	3.150	2.250	3.150	0.92
S61500FC90	1 ½	3.800	2.650	3.750	1.55
S62000FC90	2	4.320	3.210	4.500	2.30

All dimensions are for informational purposes only *Tolerances +/- 5%



Stainless Steel Flex Straight Connectors

Features:

- Manufactured in type 316 stainless steel for increased corrosion resistance
- Excellent strength and durability
- Polished with standard “brite” finish to increase corrosion resistance and aesthetic appearance
- Approved for damp locations when used with Calbrite’s PVC and Clear Coated flex conduit
- Neoprene O-ring and type 316 stainless steel locknut included
- NPT threads
- No package quantity required



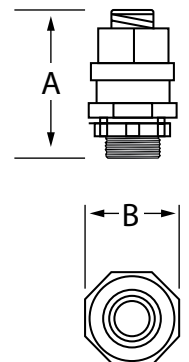
Certifications and Compliances:

- NEMA 4X approved
- Temperature Ratings:
 - Stainless steel body – approx. 1700°F
 - Internal insulated throat (gray) – approx. 350°F
 - Internal plastic ferrule (white) – approx. 450°F
 - Neoprene O-ring – approx. 600°F

Applications:

Used to connect stainless flexible conduit to other fittings. Assists in preventing contamination of oils, dirt, dust, and liquid when used with Calbrite PVC coated stainless flexible conduit. Flexible stainless steel conduit can be used for protecting electronic and electrical wires and cable. Suitable for corrosive environments, including pumps, motors, HVAC systems, machine tools, electrical housings and cabinetry.

Part Number	Trade Size (in)	A (in)	B (in)	Weight per each (lb)
S60500FCSO	½	1.560	1.250	1.950
S60700FCSO	¾	1.610	1.540	2.290
S61000FCSO	1	1.810	1.860	2.850
S61200FCSO	1 ¼	2.000	2.250	3.150
S61500FCSO	1 ½	2.175	2.650	3.750
S62000FCSO	2	2.360	3.210	4.500



All dimensions are for informational purposes only *Tolerances +/- 5%

Flex Conduit & Fittings

Stainless Steel Flex 45° Connectors

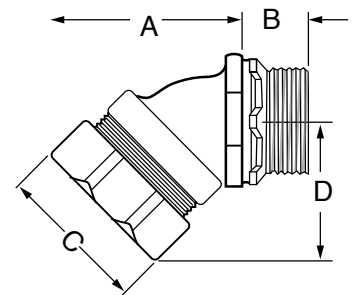
Features:

- Manufactured in type 316 stainless steel for increased corrosion resistance
- Excellent strength and durability
- Polished with standard “brite” finish to increase corrosion resistance and aesthetic appearance
- Approved for damp locations when used with Calbrite’s PVC and Clear Coated flex conduit
- Neoprene O-ring and type 316 stainless steel locknut included
- NPT threads
- No package quantity required



Certifications and Compliances:

- NEMA 4X approved
- Temperature Ratings:
 - Stainless steel body – approx. 1700°F
 - Internal insulated throat (gray) – approx. 350°F
 - Internal plastic ferrule (white) – approx. 450°F
 - Neoprene O-ring – approx. 600°F



Applications:

Used to connect stainless flexible conduit to other fittings at 45°. Assists in preventing contamination of oils, dirt, dust, and liquid when used with Calbrite PVC coated stainless flexible conduit. Flexible stainless steel conduit can be used for protecting electronic and electrical wires and cable. Suitable for corrosive environments, including pumps, motors, HVAC systems, machine tools, electrical housings and cabinetry.

Part Number	Trade Size (in)	A (in)	B (in)	C (in)	D (in)	Weight per each (lb)
S60500FC45	½	1.800	0.500	1.250	1.300	0.25
S60700FC45	¾	2.200	0.575	1.520	1.450	0.38
S61000FC45	1	2.800	0.680	1.800	1.860	0.62

All dimensions are for informational purposes only *Tolerances +/- 5%



Stainless Steel Flex to Rigid Connector

Features:

- Manufactured in type 316 stainless steel for increased corrosion resistance
- Excellent strength and durability
- Polished with standard “brite” finish to increase corrosion resistance and aesthetic appearance
- Approved for damp locations when used with Calbrite’s PVC and Clear Coated flex conduit
- No package quantity required

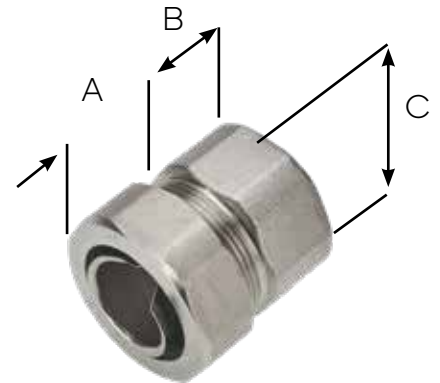


Certifications and Compliances:

- NEMA 4X approved
- Temperature Ratings:
 - Stainless steel body – approx. 1700°F
 - Internal plastic ferrule (white) – approx. 450°F

Applications:

Used to connect stainless flexible conduit to rigid conduit. Assists in preventing contamination of oils, dirt, dust, and liquid when used with Calbrite PVC coated stainless flexible conduit. Flexible stainless steel conduit can be used for protecting electronic and electrical wires and cable. Suitable for corrosive environments, including pumps, motors, HVAC systems, machine tools, electrical housings and cabinetry.



Part Number	Trade Size (in)	A (in)	B (in)	C (in)	Weight per each (lb)
S60500FCR0	½	0.875	0.750	1.310	0.268
S60700FCR0	¾	0.875	0.750	1.630	0.316
S61000FCR0	1	1.000	0.813	1.880	0.568
S61200FCR0	1 ¼	1.130	0.875	2.250	0.718
S61500FCR0	1 ½	1.130	0.875	2.500	0.856
S62000FCR0	2	1.250	0.938	3.000	1.218

All dimensions are for informational purposes only *Tolerances +/- 5%

Flex Conduit & Fittings

Stainless Steel Low Smoke Zero Halogen Flexible Conduit

Features:

- Stainless Steel helically wound flexible conduit with smooth, oil resistant, black Low Fire Hazard coating
- Color: Black,
Note: Grey or orange available on request
- Highly flame retardant, low smoke, low toxicity, self extinguishing, halogen, sulphur and phosphorous free
- Compression Strength (½" size): 400kg/100mm
- Pull-off (Tensile) strength (½" size): 130kg
- Temperature Performance: -25°C to +90°C

Certifications and Compliances:

- IP rating - IP66, IP67, IP68 & IP69
- ROHS
- REACH

Applications:

For use in low ventilated or confined areas, typically within transportation and infrastructure installations.



Part Number	Trade Size	US Trade Size (in)	Real Length (M)	OD (mm)	ID (mm)	Min Bend Radius R (mm)
S60500FCLS	20	½	25	21.1	16.0	100
S60700FCLS	25	¾	25	26.4	21.0	130
S61000FCLS	32	1	25	33.1	26.5	180

All dimensions are for informational purposes only *Tolerances +/- 5%



Stainless Steel Flameproof Barrier Gland

Features:

- Straight, external thread, Stainless Steel, flameproof barrier gland
- Nickel Plated Brass with inner Compound Barrier Nylon compression seal
- Color: Self

Technical Properties:

- High tensile strength
- Oil resistant
- Corrosion resistant
- Conforms to EN 61386
- Metric thread versions available on request
- Temperature Performance: -60°C to +85°C

Certifications and Compliances:

- IP rating - IP66, IP67, IP68 (5 bar), IP69
- ROHS
- IEC EN 61386
- REACH
- Group I and Group II approvals
- Can be used in zone 1, zone 2, zone 21 and zone 22 Hazardous areas when used with Calbrite's Liquid Tight range of flexible conduits

Applications:

For indoor or outdoor use in Zone 1, Zone 2, Zone 21 and Zone 22 Hazardous Areas with all types of cables housed in Liquid Tight flexible conduit systems. Suitable threaded entries. type 316 stainless steel compression fitting comprising of body, nut, insert, pot, cap, nylon compression seal and compound barrier. The compound barrier seals around the cable conductors. The insert is manufactured in machined nickel plated brass to facilitate easy assembly and re-use. Also ensures high mechanical strength and electrical continuity.



Flex Conduit & Fittings

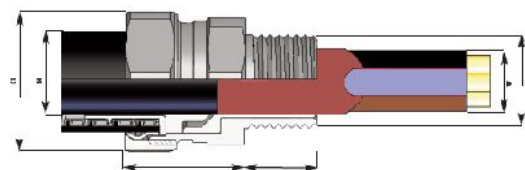
Stainless Steel Flameproof Barrier Gland

Part Number	Conduit Size	NPT Thread A (in)	B (mm)	C (mm)	D (A/F) (mm)	E (A/F) (mm)	F (mm)
LTP16-050-EXD-SS	16	½	20	32	29	29	13
LTP20-050-EXD-SS	20	½	20	32	29	29	13
LTP25-075-EXD-SS	25	¾	20	34	33	33	18
LTP32-100-EXD-SS	32	1	25	37	40	40	24
LTP40-125-EXD-SS	40	1¼	26	48	50	50	31
LTP50-150-EXD-SS	50	1½	26	47	58	58	38
LTP63-200-EXD-SS	63	2	27	47	70	70	45

All dimensions are for informational purposes only *Tolerances +/- 5%

Group I		
ATEX APPROVAL to EN IEC 60079-0 2018		CML Certificate no: CML 15ATEX1037X
Ex d Flameproof	Ex d I Mb	EN 60079-1 2014
Ex e Increased Safety	Ex e I Mb	EN IEC 60079-7 2015 +A1:2018
IECEX APPROVAL to IEC 60079-0 2017		CML Certificate no: CML 15.0020X
Ex d Flameproof	Ex d I Mb	IEC 60079-1 2014-06
Ex e Increased Safety	Ex e I Mb	IEC 60079-7 2017

Group II		
ATEX APPROVAL to EN IEC 60079-0 2018		CML Certificate no: CML 15ATEX1037X
Ex d Flameproof	Ex db IIC Gb	EN 60079-1 2014
Ex e Increased Safety	Ex eb IIC Gb	EN IEC 60079-7 2015 +A1:2018
Ex ta Dust Ignition Proof	Ex ta IIIC Da IP6X	EN 60079-31 2014
IECEX APPROVAL to IEC 60079-0 2017		CML Certificate no: CML 15.0020X
Ex d Flameproof	Ex db IIC Gb	IEC 60079-1 2014-06
Ex e Increased Safety	Ex eb IIC Gb	IEC 60079-7 2017
Ex ta Dust Ignition Proof	Ex ta IIIC Da IP6X	IEC 60079-31 2014



Russian Certificate Number	
TC RU C-GB.BH02.B.00386	
2 part barrier compound included in pack	
LTP16-050-EXD-SS	1 x 15g
LTP20-050-EXD-SS	1 x 15g
LTP25-075-EXD-SS	2 x 15g
LTP32-100-EXD-SS	1 x 55g
LTP40-125-EXD-SS	1 x 55g
LTP50-150-EXD-SS	2 x 55g
LTP63-200-EXD-SS	3 x 55g

Stainless Steel Hygienic Liquid Tight Conduit

Features:

- Type 316 stainless steel helically wound flexible conduit with smooth, oil resistant blue hygienic PVC Coating
- Color: Blue (RAL5012)

Technical Properties:

- Good Flexibility
- High compression strength: 400 kg/100 mm
- Tensile strength: 130 kg
- Temperature Range (-20° to + 105°)
- Oil resistant



Certifications and Compliances:

- IP66, IP67, IP68, IP69
- ROHS
- REACH

Applications:

Ideally suited for applications where there is a washdown requirement such as food processing machinery and a wide temperature range is required.

Part Number	Description	Reel Length (ft)	OD (in)	ID (in)	Min Bend Radius (in)
S60500CTHG	½" SS316 Hygienic PVC Coated Flex Conduit	25	0.83	0.63	2.560
S60700CTHG	¾" SS316 Hygienic PVC Coated Flex Conduit	25	1.04	0.83	3.940
S61000CTHG	1" SS316 Hygienic PVC Coated Flex Conduit	25	1.30	1.04	5.310
S61200CTHG	1-¼" SS316 Hygienic PVC Coated Flex Conduit	10	1.65	1.39	6.890
S61500CTHG	1-½" SS316 Hygienic PVC Coated Flex Conduit	10	1.89	1.59	9.060

All dimensions are for informational purposes only *Tolerances +/- 5%

Flex Conduit & Fittings

Stainless Steel Hygienic Flex Fitting

Features:

- Type 316 stainless steel Straight, External Thread
- Food contact and hygienic conduit fitting for use with Hygienic Flex conduits
- Face Seal & Nut Seal = Polyester elastomer
- Conduit seal and insulated throat = Nylon PA6
- Color = Stainless steel, All plastic parts = Blue



Technical Properties:

- High tensile strength
- Oil resistant
- Corrosion resistant

Certifications and Compliances:

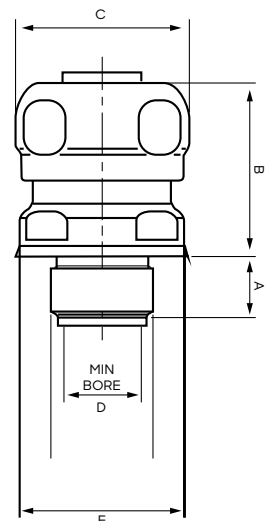
- Designed in accordance with EN1672-2 and EN ISO 14159
- ROHS

Applications:

Suitable for knockouts or threaded entries. Stainless Steel compression fitting comprising of nut, insert and nylon compression seal. The insert is manufactured in machined nickel plated brass to facilitate easy assembly and re-use. Also ensures high mechanical strength.

Part Number	Trade Size (in)	A (in)	B (in)	C (in)	D (in)	E (in)
S60500FCHG	½	0.47	1.34	1.34	0.57	1.26
S60700FCHG	¾	0.55	1.39	1.57	0.74	1.50
S61000FCHG	1	0.59	1.52	1.87	0.97	1.75
S61200FCHG	1¼	0.63	1.67	2.32	1.29	2.17
S61500FCHG	1½	0.63	1.83	2.55	1.48	2.44
S62000FCHG	2	0.63	1.83	2.99	1.93	2.95

All dimensions are for informational purposes only *Tolerances +/- 5%





Cord Grip and Cable Connectors



Cord Grip and Cable Connectors

Cord Grip	84
TECK Connectors	86

Stainless Steel Cord Grip

Features:

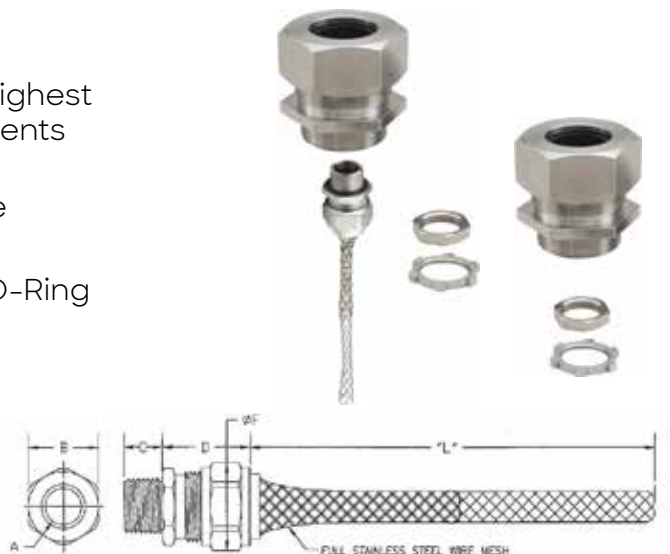
- Manufactured in type 304 stainless steel
- Provides exceptional tensile strength and the highest levels of durability in harsh /corrosive environments
- Polished with standard “brite” finish to increase corrosion resistance and aesthetic appearance
- Neoprene Bushing - Durometer 55 +/- 5
- All connectors include an embedded Buna-A O-Ring
- All connectors include a stainless steel locknut
- No package quantity required

Certifications and Compliances:

- UL 514D Listed
- CSA C22.2 No. 18.3-13 Listed
- NEMA 4X Approved

Applications:

Stainless Cord Grips completely eliminate pull tension on terminals, control cable arc-of-bend, prevent cord pull-out, and provide a liquid-tight seal. All connectors can be ordered with or without wire mesh attachments and accommodate conduit sizes from ½” to 2”.



Part Number (without Mesh)	Part Number (with Mesh)	Trade Size (in)	Cable Range (in)
S40501GR00	-	½	0.125 - 0.188
S40502GR00	S40502GRWM	½	0.188 - 0.250
S40503GR00	S40503GRWM	½	0.250 - 0.312
S40504GR00	S40504GRWM	½	0.312 - 0.375
S40505GR00	S40505GRWM	½	0.375 - 0.438
S40506GR00	S40506GRWM	½	0.438 - 0.500

All dimensions are for informational purposes only *Tolerances +/- 5%

Cord Grip and Cable Connectors

Part Number (without Mesh)	Part Number (with Mesh)	Trade Size (in)	Cable Range (in)
S40507GR00	S40507GRWM	½	0.500 - 0.562
S40508GR00	S40508GRWM	½	0.562 - 0.625
S40701GR00	S40701GRWM	¾	0.438 - 0.500
S40702GR00	S40702GRWM	¾	0.500 - 0.562
S40703GR00	S40703GRWM	¾	0.500 - 0.625
S40704GR00	S40704GRWM	¾	0.562 - 0.688
S40705GR00	S40705GRWM	¾	0.625 - 0.750
S40706GR00	S40706GRWM	¾	0.688 - 0.812
S41001GR00	S41001GRWM	1	0.438 - 0.562
S41003GR00	S41003GRWM	1	0.500 - 0.625
S41004GR00	S41004GRWM	1	0.562 - 0.688
S41005GR00	S41005GRWM	1	0.625 - 0.750
S41006GR00	S41006GRWM	1	0.688 - 0.812
S41007GR00	S41007GRWM	1	0.750 - 0.875
S41008GR00	S41008GRWM	1	0.812 - 0.938
S41009GR00	S41009GRWM	1	0.875 - 1.000
S41201GR00	-	1¼	0.562 - 0.688
S41203GR00	-	1¼	0.688 - 0.812
S41204GR00	S41203GRWM	1¼	0.750 - 0.875
S41205GR00	S41204GRWM	1¼	0.875 - 1.000
S41206GR00	S41205GRWM	1¼	1.000 - 1.125
S41207GR00	S41206GRWM	1¼	1.125 - 1.250
S41501GR00	S41207GRWM	1¼	1.250 - 1.375
S41502GR00	-	1½	0.562 - 0.688
S41502GR00	-	1½	0.688 - 0.812
S41503GR00	S41503GRWM	1½	0.750 - 0.875
S41504GR00	S41504GRWM	1½	0.875 - 1.000
S41505GR00	S41505GRWM	1½	1.000 - 1.125
S41506GR00	S41506GRWM	1½	1.125 - 1.250
S41507GR00	S41507GRWM	1½	1.250 - 1.375
S42001GR00	S42001GRWM	2	1.250 - 1.375
S42002GR00	S42002GRWM	2	1.438 - 1.562
S42003GR00	S42003GRWM	2	1.562 - 1.688
S42004GR00	S42004GRWM	2	1.688 - 1.812
S42005GR00	S42005GRWM	2	1.812 - 1.938
S42006GR00	S42006GRWM	2	1.938 - 2.062
S42007GR00	S42007GRWM	2	2.062 - 2.188
S42008GR00	S42008GRWM	2	2.188 - 2.312
S42009GR00	S42009GRWM	2	2.312 - 2.438

All dimensions are for informational purposes only *Tolerances +/- 5%



Stainless Steel TECK Connectors

Features:

- Manufactured in type 304 stainless steel for increased corrosion resistance
- One Piece Compact Design
- Unique Grounding Seal for superior connectivity
- No disassembly required for easy and fast installations
- Neoprene bushing provides pull out and sealing protection



Certifications and Compliances:

- NEMA 4, IP65
- CSA C22.2 No 18.3-13 Listed

Applications:

Calbrite stainless steel TECK connectors feature a one piece design, require no disassembly and are designed to form a watertight seal around the jacketed metal cable and at the enclosure entry. Rated NEMA 4 and IP65, these connectors are in-stock in ½" to 4" hub sizes. Also available in type 316 stainless steel upon request.

Cord Grip and Cable Connectors

Hub Size (in)	Part Number	Exposed Armor Length (in)	Cable Range Over Jacket		Cable Range Over Armor		Length (in)	Width (in)
			Min (in)	Max (in)	Min (in)	Max (in)		
½	S40501TKOO	⅞	0.525	0.650	0.415	0.570	2.100	1.530
½	S40502TKOO	⅞	0.650	0.775	0.540	0.695	2.100	1.530
½	S40503TKOO	⅞	0.750	0.875	0.640	0.795	2.100	1.530
½	S40504TKOO	⅞	0.860	0.985	0.750	0.905	2.100	1.530
¾	S40705TKOO	1	0.985	1.080	0.845	1.000	2.450	2.200
¾	S40706TKOO	1	1.080	1.205	0.970	1.125	2.450	2.200
1	S41007TKOO	1	1.205	1.350	1.095	1.270	2.450	2.47
1¼	S41208TKOO	1¼	1.350	1.475	1.240	1.395	3.350	2.970
1¼	S41209TKOO	1¼	1.475	1.600	1.365	1.520	3.350	2.970
1¼	S41210TKOO	1¼	1.600	1.725	1.490	1.645	3.350	2.970
1½	S41511TKOO	1½	1.725	1.850	1.615	1.770	3.700	3.500
1½	S41512TKOO	1½	1.850	1.975	1.740	1.895	3.700	3.500
1½	S41513TKOO	1¾	1.975	1.865	2.020	2.020	3.700	3.500
2	S42014TKOO	1¾	2.100	2.225	1.990	2.145	4.050	4.150
2	S42015TKOO	1¾	2.225	2.350	2.115	2.270	4.050	4.150
2	S42016TKOO	1¾	2.350	2.475	2.240	2.395	4.050	4.150
2	S42017TKOO	1¾	2.475	2.600	2.365	2.520	4.050	4.150
2	S42018TKOO	1¾	2.600	2.725	2.490	2.645	4.050	4.150
2½	S42519TKOO	1¾	2.700	2.850	2.560	2.760	4.100	4.600
2½	S42520TKOO	1¾	2.850	3.000	2.710	2.910	4.100	4.600
3	S43021TKOO	1¾	3.000	3.150	2.860	3.060	4.500	5.680
3	S43022TKOO	1¾	3.150	3.300	3.010	3.210	4.500	5.680
3	S43023TKOO	1¾	3.300	3.450	3.160	3.360	4.500	5.680
3½	S43524TKOO	1¾	3.450	3.600	3.300	3.500	4.600	6.020
3½	S43525TKOO	1¾	3.600	3.750	3.450	3.650	4.600	6.020
3½	S43526TKOO	1¾	3.750	3.900	3.600	3.800	4.600	6.020
4	S44027TKOO	1¾	3.900	4.050	3.750	3.940	4.750	6.520
4	S44028TKOO	1¾	4.050	4.200	3.900	4.090	4.750	6.520
4	S44029TKOO	1¾	4.200	4.350	4.050	4.240	4.750	6.520

All dimensions are for informational purposes only *Tolerances +/- 5%





Straps and Clamps



Strap and Clamps

Clamp Backs	90
Clamp Back Spacers	90
U-Bolts	91
Split Ring Clamp	92
Conduit Hanger	93
Beam Clamp	94
Strut Clamps	95
Parallel Clamp	96
Split Ring Extension	96
Split Ring Mounting Plates	97
Right Angle Beam Clamps	98
Right Angle Clamps	99
Two Hole Straps	100
One Hole Straps	100

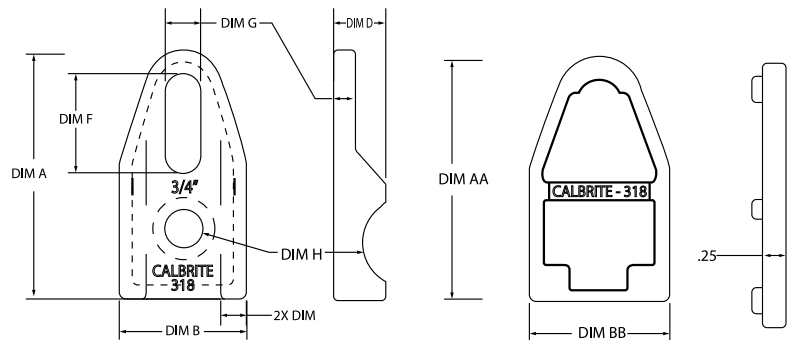
Stainless Steel Clamp Backs & Clamp Back Spacers

Features:

- Manufactured in type 316 stainless steel to meet any stringent sanitary condition
- Polished with standard “brite” finish to increase corrosion resistance and aesthetic appearance
- No package quantity required

Applications:

The stainless steel one piece clamp backs and clamp back spacers provide spacing from the mounting surface when securing both cable and conduit.



Clamp Backs

Part Number	Trade Size (in)	A (in)	B (in)	C (in)	D (in)	E (in)	F (in)	G (in)	H (Dia) (in)	I (in)	Weight per each (lb)
S60500CB00	½	2.500	1.300	0.250	0.500	0.310	1.000	0.380	0.380	0.270	0.150
S60700CB00	¾	2.500	1.300	0.250	0.560	0.540	1.000	0.380	0.380	0.270	0.150
S61000CB00	1	2.500	1.300	0.250	0.620	0.670	1.000	0.380	0.380	0.270	0.150

All dimensions are for informational purposes only *Tolerances +/- 5%

Clamp Back Spacers

Part Number	Trade Size (in)	AA (in)	BB (in)	Thickness (in)	Weight per each (lb)
S60510CBSP	½ - 1 (Universal)	2.500	1.310	0.250	0.080

All dimensions are for informational purposes only *Tolerances +/- 5%

Straps and Clamps

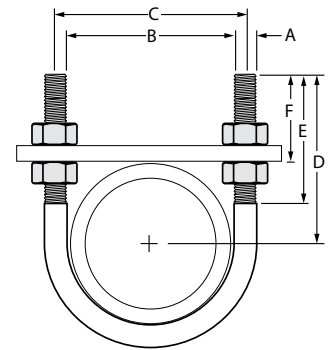
Stainless Steel U-Bolts

Features:

- Manufactured in type 316 stainless steel to meet any stringent sanitary condition
- Polished with standard “brite” finish to increase corrosion resistance and aesthetic appearance
- Figure 137 style
- Four type 316 stainless steel hex nuts included
- No package quantity required

Applications:

Used to mount and secure stainless and PVC coated conduit.



Part Number	Trade Size (in)	A (in)	B (in)	C (in)	D (in)	E (in)	F (in)	Weight per each (lb)
S60500UB00	½	¼	0.955	1.250	2.750	2.400	2.313	0.100
S60700UB00	¾	¼	1.180	1.400	2.790	2.520	2.219	0.110
S61000UB00	1	¼	1.400	1.700	2.800	2.520	2.094	0.120
S61200UB00	1¼	⅜	1.735	2.150	3.000	2.520	2.031	0.280
S61500UB00	1½	⅜	2.000	2.500	3.050	2.550	2.063	0.300
S62000UB00	2	⅜	2.450	2.850	3.250	2.550	2.063	0.320
S62500UB00	2½	½	3.000	3.875	3.750	3.000	2.250	0.680
S63000UB00	3	½	3.600	4.200	4.000	3.000	2.250	0.790
S63500UB00	3½	½	4.200	4.650	4.250	3.000	2.250	0.820
S64000UB00	4	½	4.600	5.200	4.750	3.050	2.250	0.920

All dimensions are for informational purposes only *Tolerances +/- 5%



Stainless Steel Split Ring Clamp

Features:

- Manufactured in type 316 stainless steel to meet any stringent sanitary condition
- Polished to a bright, easily maintainable finish that is modern, attractive, easy to clean, and that also enhances the surface's resistance to pitting and bacterial corrosion
- Designed for use with stainless steel Rigid / IMC, aluminum and galvanized conduit
- Two type 316 stainless steel bolts included
- No package quantity required



Applications:

Calbrite's stainless steel Split Ring Clamps are designed for mounting and securing conduit, horizontally or vertically, away from the wall or device in wash-down or corrosive environments when used with Calbrite's Mounting Plates and Extensions.

Part Number	Trade Size (in)	A Height (in)	B Length (in)	C Female Thread (in)	D Bolt Size (in)	Thickness (in)	Weight per each (lb)
S60500SP00	½	1.160	2.180	0.375	#10 x ½	0.125	0.090
S60700SP00	¾	1.410	2.500	0.375	#10 x ½	0.125	0.110
S61000SP00	1	1.750	2.700	0.375	#10 x ½	0.135	0.140
S61200SP00	1¼	2.030	3.230	0.375	#10 x ½	0.140	0.160
S61500SP00	1½	2.420	3.500	0.375	#10 x ½	0.150	0.200
S62000SP00	2	2.870	3.920	0.375	#10 x ½	0.150	0.230
S62500SP00	2½	3.650	5.000	0.500	¼ x 20	0.160	0.500
S63000SP00	3	4.250	5.760	0.500	¼ x 20	0.210	0.750
S64000SP00	4	5.300	6.830	0.500	¼ x 20	0.250	1.130

All dimensions are for informational purposes only *Tolerances +/- 5%

Straps and Clamps

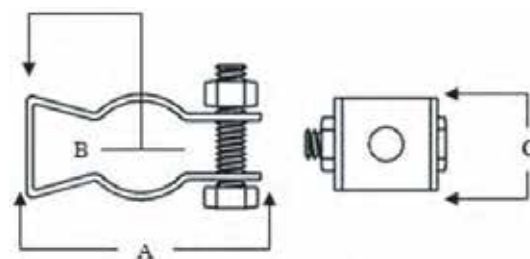
Stainless Steel Conduit Hanger

Features:

- Manufactured in type 316 stainless steel to meet any stringent sanitary condition
- Polished with standard “brite” finish to increase corrosion resistance and aesthetic appearance
- Designed for use with stainless rigid, stainless IMC, galvanized and aluminum conduit
- Type 316 stainless steel nut and bolt (carriage) included
- No package quantity required

Applications:

Heavy duty type 316 stainless steel conduit hangers are great for securing and mounting conduit tubing and cable in corrosive environments.



Part Number	Trade Size (in)	A (in)	B (in)	C (in)	Nut & Bolt Size/ Bolt Hole Size (in)	Weight per each (lb)
S60500MH00	½	1.900	⅞	0.850	¼	0.060
S60700MH00	¾	2.350	1⅝	0.870	¼	0.080
S61000MH00	1	2.630	1⅞	0.870	¼	0.100
S61200MH00	1¼	3.300	1⅞	0.870	¼	0.120
S61500MH00	1½	3.380	1⅞	1.250	¼	0.200
S62000MH00	2	4.150	2	1.250	¼	0.220
S62500MH00	2½	4.600	2⅞	1.250	¼	0.260
S63000MH00	3	5.450	2⅞	1.250	¼	0.300
S64000MH00	4	6.700	3⅞	1.250	¼	0.360

All dimensions are for informational purposes only *Tolerances +/- 5%



Stainless Steel Beam Clamp

Features:

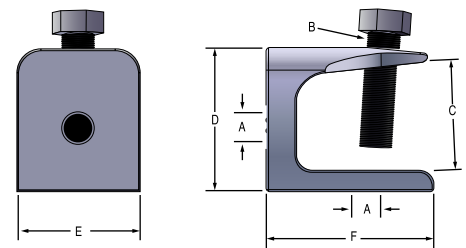
- Manufactured in type 316 stainless steel to meet any stringent sanitary condition
- Polished with standard “brite” finish to increase corrosion resistance and aesthetic appearance
- Type 316 stainless steel set screw included
- No package quantity required

Certifications and Compliances:

- Material: 316SS
- Hardware: 316SS
- Minimum tensile strength is 485 MPa or 70 Ksi

Applications:

This heavy-duty beam clamp is cast in type 316 stainless for superior strength and corrosion resistance. Designed for use to provide a means of attachment to a structural member. Used for hanging conduit or cables from a wall or ceiling. Attachment holes are located on the back and bottom.



Part Number	Trade Size (in)	A (in)	B (in)	C (in)	D (in)	E (in)	F (in)	Load Rating (lb)	Weight per each (lb)
S60200BC00	1/4	1/4-20	5/16-18	1.150	1.400	0.940	1.280	150	0.190
S60300BC00	3/8	3/8-16	1/2-13	1.500	1.800	1.810	1.970	750	0.750
S60500BC00	1/2	1/2-13	5/8-11	1.570	2.000	2.050	2.100	1100	1.250

All dimensions are for informational purposes only *Tolerances +/- 5%

Straps and Clamps

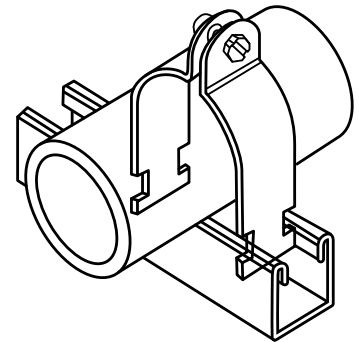
Stainless Steel Strut Clamps

Features:

- Manufactured in type 316 stainless steel to meet any stringent sanitary condition
- Polished with standard “brite” finish to increase corrosion resistance and aesthetic appearance
- Designed for use with 1- $\frac{5}{8}$ ” stainless channel
- Type 316 stainless steel nut and bolt included
- No package quantity required

Applications:

Used at any point along the slot side of the channel and are inserted into the two channel returns. Designed for use in standard 1- $\frac{5}{8}$ ” channels. Supplied with stainless nut and bolt.



Part Number	Trade Size (in)	Material Thickness (in)	Design Load (lb)	Bolt Size (in)	Weight per each (lb)
S60500SC00	$\frac{1}{2}$	0.061	400	$\frac{1}{4}$ - 20 x $\frac{3}{4}$	0.100
S60700SC00	$\frac{3}{4}$	0.070	600	$\frac{1}{4}$ - 20 x $\frac{3}{4}$	0.140
S61000SC00	1	0.075	600	$\frac{1}{4}$ - 20 x $\frac{3}{4}$	0.160
S61200SC00	1 $\frac{1}{4}$	0.080	600	$\frac{1}{4}$ - 20 x $\frac{3}{4}$	0.200
S61500SC00	1 $\frac{1}{2}$	0.095	800	$\frac{5}{16}$ - 18 x 1	0.260
S62000SC00	2	0.105	800	$\frac{5}{16}$ - 18 x 1	0.340
S62500SC00	2 $\frac{1}{2}$	0.105	800	$\frac{5}{16}$ - 18 x 1	0.360
S63000SC00	3	0.105	800	$\frac{5}{16}$ - 18 x 1	0.400
S63500SC00	3 $\frac{1}{2}$	0.115	1000	$\frac{3}{8}$ - 16 x $1\frac{1}{4}$	0.540
S64000SC00	4	0.125	1000	$\frac{3}{8}$ - 16 x $1\frac{1}{4}$	0.700

All dimensions are for informational purposes only *Tolerances +/- 5%

Stainless Steel Parallel Clamps

Features:

- Manufactured in type 316 stainless steel to meet any stringent sanitary condition
- Polished with standard “brite” finish to increase corrosion resistance and aesthetic appearance
- Designed for use with stainless steel conduit
- Type 316 stainless steel nut and bolt included
- No package quantity required

Applications:

Used to attach the conduit run parallel to a beam or structural member.



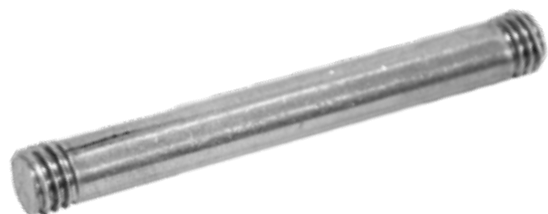
Part Number	Trade Size (in)	Overall Length (in)	Overall Width (in)	Overall Height (in)	Weight per each (lb)
S60700PC00	¾	2.850	1.200	2.600	0.580
S61000PC00	1	3.050	1.200	2.800	0.620

All dimensions are for informational purposes only *Tolerances +/- 5%

Stainless Steel Split Ring Extension

Applications:

Split Ring Extensions are used to connect Split Ring Clamps to Split Ring Mounting Plates. It is constructed from type 316 stainless steel.



Straps and Clamps

Stainless Steel Split Ring Mounting Plates

Features:

- Manufactured in type 316 stainless steel to meet any stringent sanitary condition
- Polished to a bright, easily maintainable finish that is modern, attractive, easy to clean, and that also enhances the surface's resistance to pitting and bacterial corrosion
- Designed for use with stainless steel Split Ring Clamps and Extensions
- Designed for use with vertical and horizontal installations
- Flat back design ensures seamless installation to mounting apparatus
- No package quantity required



Applications:

Calbrite's stainless steel Split Ring Mounting Plates are designed for use with stainless steel Split Ring Clamps and Extensions in corrosive and/or damp environments for both horizontal and vertical installations.

Part Number	Trade Size (in)	Overall Length (in)	Overall Width (in)	Overall Height (in)	Screw Size (in)	Thickness (in)	Center to Center (Mtg Holes) (in)	Weight per each (lb)
S60300SPMP	3/8	2.750	1.350	0.450	#12	0.185	2.000	0.880
S60500SPMP	1/2	2.750	1.350	0.450	#12	0.190	2.000	1.110

All dimensions are for informational purposes only *Tolerances +/- 5%

Part Number	Trade Size (in)	For (in)
S60302SPX0	3/8 x 2	Clamps 3/8-2
S60304SPX0	3/8 x 4	Clamps 3/8-2
S60306SPX0	3/8 x 6	Clamps 3/8-2
S60502SPX0	1/2 x 2	Clamps 1/2-2
S60504SPX0	1/2 x 4	Clamps 1/2-2
S60506SPX0	1/2 x 6	Clamps 1/2-2

All dimensions are for informational purposes only *Tolerances +/- 5%

Stainless Steel Right Angle Beam Clamp

Features:

- Manufactured in type 316 stainless steel to meet any stringent sanitary condition
- Polished with standard “brite” finish to increase corrosion resistance and aesthetic appearance
- Durable, heavy-duty design capable of withstanding heavy loads
- Type 316 stainless steel threaded $\frac{3}{8}$ " U-Bolt and Hex Nuts included
- No package quantity required

Applications:

Calbrite's polished, stainless steel Right Angle Beam Clamps are designed to help secure stainless conduit to a beam, channel, flange or other angled supports.



Part Number	Fits Channel Depths (in)	Design Load Rating (lb)	Overall Height (in)	Overall Width (in)	Overall Height (in)	U-Bolt Thread Length (in)	Flange Thickness (in)	Weight per each (lb)
S60000RB00	Up to 1- $\frac{5}{8}$	1000	2.250	3.000	3.800	1.625	0.250	0.750

All dimensions are for informational purposes only *Tolerances +/- 5%

Straps and Clamps

Stainless Steel Right Angle Clamp

Features:

- Manufactured in type 316 stainless steel for increased corrosion resistance
- Polished with standard “brite” finish to increase corrosion resistance and aesthetic appearance
- Type 316 stainless steel hex nuts included
- No package quantity required

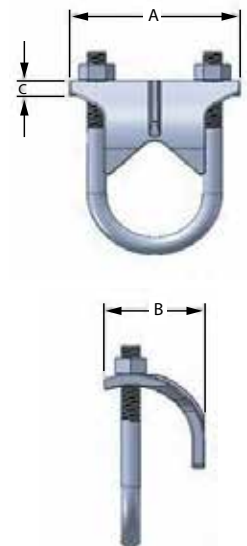
Applications:

Designed to fit stainless rigid, IMC and EMT conduit. Can also be used for PVC-coated conduit. Calbrite Right Angle Clamps are used to mount conduit to the flange of a structural member without drilling holes. Cast in type 316 stainless steel, these clamps provide both excellent strength and corrosion resistance.



Part Number	Trade Size (in)	A (in)	B (in)	C (in)	Weight per each (lb)
S60500RA00	½	2.000	1.600	0.245	0.320
S60700RA00	¾	2.070	1.600	0.255	0.350
S61000RA00	1	2.590	1.600	0.255	0.450
S61200RA00	1¼	2.840	1.600	0.270	0.500
S61500RA00	1½	3.330	1.600	0.270	0.600
S62000RA00	2	3.850	1.690	0.310	0.950
S62500RA00	2½	4.580	1.800	0.330	1.250
S63000RA00	3	5.220	1.850	0.330	1.450
S64000RA00	4	6.180	1.850	0.330	1.700

All dimensions are for informational purposes only *Tolerances +/- 5%



Stainless Steel Two Hole Strap

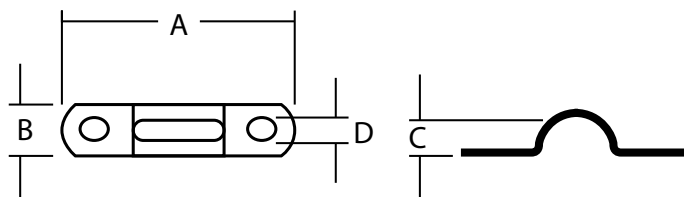
Features:

- Manufactured in type 316 stainless steel to meet any stringent sanitary condition
- Polished with standard “brite” finish to increase corrosion resistance and aesthetic appearance
- Designed for use with stainless rigid, stainless IMC, galvanized and aluminum conduit
- No package quantity required



Applications:

Heavy duty type 316 stainless steel two-hole mount straps are great for securing and mounting conduit, tubing and cable in corrosive environments.



Part Number	Trade Size (in)	A (in)	B (in)	C (in)	Bolt Hole Size (in)	Weight per each (lb)
S605002S00	½	2.630	0.630	0.840	¼	0.020
S607002S00	¾	2.930	0.750	1.050	¼	0.030
S610002S00	1	3.380	0.750	1.300	¼	0.040
S612002S00	1¼	4.350	0.820	1.660	¼	0.060
S615002S00	1½	4.440	1.240	1.900	¼	0.130
S620002S00	2	5.300	1.250	2.370	¼	0.170
S625002S00	2½	5.750	1.250	2.870	¼	0.200
S630002S00	3	6.800	1.250	3.500	¼	0.230
S640002S00	4	9.75	1.250	4.500	¼	0.280

All dimensions are for informational purposes only *Tolerances +/- 5%

Straps and Clamps

Stainless Steel One Hole Strap

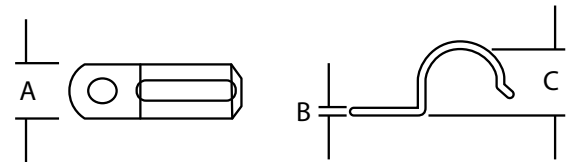
Features:

- Manufactured in type 316 stainless steel to meet any stringent sanitary condition
- Polished with standard “brite” finish to increase corrosion resistance and aesthetic appearance
- Designed for use with stainless rigid, stainless IMC, galvanized and aluminum conduit
- No package quantity required



Applications:

Heavy duty type 316 stainless steel one-hole mount straps are great for securing and mounting conduit, tubing and cable in corrosive environments.



EMT One Hole Strap

Part Number	Trade Size (in)	A (in)	B (in)	C (in)	Bolt Hole Size (in)	Weight per each (lb)
S205001S00	½	0.750	0.050	0.800	¼	0.020
S207001S00	¾	0.750	0.050	1.250	¼	0.030
S210001S00	1	0.750	0.072	1.300	¼	0.040
S212001S00	1¼	0.870	0.082	1.650	½	0.080
S215001S00	1½	0.880	0.095	1.850	½	0.100
S220001S00	2"	1.250	0.110	2.370	½	0.220

All dimensions are for informational purposes only *Tolerances +/- 5%

One Hole Strap

Part Number	Trade Size (in)	A (in)	B (in)	C (in)	Bolt Hole Size (in)	Weight per each (lb)
S605001S00	½	0.750	0.080	0.840	¼	0.030
S607001S00	¾	0.750	0.080	1.050	¼	0.050
S610001S00	1	0.750	0.080	1.300	¼	0.060
S612001S00	1¼	0.875	0.100	1.660	½	0.110
S615001S00	1½	0.880	0.115	1.900	½	0.170
S620001S00	2	0.880	0.125	2.370	½	0.220
S625001S00	2½	1.250	0.190	2.874	9/16	0.550
S630001S00	3	1.250	0.190	3.500	9/16	0.640
S640001S00	4	1.250	0.190	4.500	9/16	0.760

All dimensions are for informational purposes only *Tolerances +/- 5%



Miscellaneous Fittings



Miscellaneous Fittings

Thread Covers	106
Threaded Conduit Cap	106
Box Connector	107
Counter-Sunk Hex Head Plug	108
Reducing (Face) Bushing	109
Pulling Elbows	110
Drain Plugs	111
Escutcheon Plates, Wall Flanges	110
Floor Flanges	111
Grounding Bushings	112

Stainless Steel Thread Covers

Applications:

Thread covers are used to cover exposed threads on conduit installations.

Part Number	Trade Size (in)
S60500TC00	1/4
S60700TC00	3/4
S61000TC00	1
S61200TC00	1-1/4
S61500TC00	1-1/2
S62000TC00	2



All dimensions are for informational purposes only *Tolerances +/- 5%

Stainless Steel Threaded Conduit Caps

Applications:

Stainless steel conduit caps are used to cap off conduit runs for future use. They are constructed from type 316 stainless steel for use in corrosive areas. Calbrite conduit caps are available in 9 trade sizes 1/2" – 4".

Part Number	Trade Size (in)
S60500CA00	1/2
S60700CA00	3/4
S61000CA00	1
S61200CA00	1-1/4
S61500CA00	1-1/2
S62000CA00	2
S62500CA00	2-1/2
S63000CA00	3
S64000CA00	4



All dimensions are for informational purposes only *Tolerances +/- 5%

Miscellaneous Fittings

Stainless Steel Box Connector

Features:

- Manufactured in type 316 stainless steel for increased corrosion resistance
- Polished with standard “brite” finish to increase corrosion resistance and aesthetic appearance
- Machined tapered male threads by machined smooth bore inside diameter
- No package quantity required



Applications:

Used to connect a box or enclosure to the conduit coupling. It can also be used with a locknut to connect two boxes side by side, or back to back and with a locknut to connect fixture housings in continuous runs.

Part Number	Trade Size (in)	Inner Diameter (in)	Width (in)	Legth (in)	Hex Nut Thickness (in)	Thread Length (in)	Weight per each (lb)
S60500CH00	½	0.650	1.140	1.000	0.210	0.625	0.090
S60700CH00	¾	0.830	1.410	1.000	0.210	0.690	0.120
S61000CH00	1	1.140	1.720	1.290	0.275	0.900	0.150
S61200CH00	1 ¼	1.390	2.070	1.320	0.340	0.940	0.280
S61500CH00	1 ½	1.625	2.320	1.410	0.425	0.940	0.390
S62000CH00	2	2.000	2.830	1.420	0.440	0.940	0.590
S62500CH00	2 ½	2.450	3.400	1.920	0.450	1.380	0.980
S63000CH00	3	3.000	3.850	1.580	0.500	1.380	1.310
S64000CH00	4	3.970	5.120	2.000	0.500	1.440	1.570

All dimensions are for informational purposes only *Tolerances +/- 5%

Stainless Steel Counter-Sunk Hex Head Plug

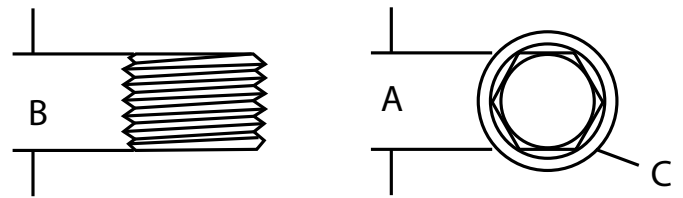
Features:

- Manufactured in type 316 stainless steel to meet any stringent sanitary condition
- Polished with standard “brite” finish to increase corrosion resistance and aesthetic appearance
- No package quantity required



Applications:

To plug or close outlets on conduit fittings, and to dead end conduit runs with use of couplings.



Part Number	Trade Size (in)	A (Allen Wrench/ Hex Key) (in)	B (in)	C (in)	OD (in)	Weight per each (lb)
S60500CSHP	½	⅜	0.540	0.150	0.840	0.060
S60700CSHP	¾	⅞	0.540	0.150	1.050	0.090
S61000CSHP	1	⅝	0.690	0.220	1.315	0.190
S61200CSHP	1 ¼	¾	0.700	0.350	1.660	0.310
S61500CSHP	1 ½	1	0.810	0.350	1.900	0.460
S62000CSHP	2	1	0.880	0.590	2.375	0.880
S62500CSHP	2 ½	1	1.165	0.750	2.875	1.820
S63000CSHP	3	1	1.180	1.180	3.500	2.870
S64000CSHP	4	1	1.180	1.650	4.500	4.720

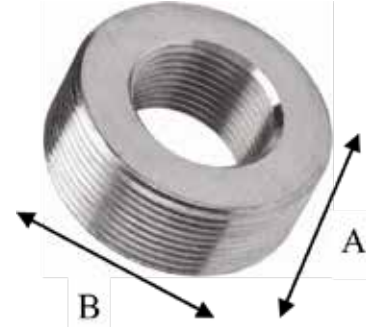
All dimensions are for informational purposes only *Tolerances +/- 5%

Miscellaneous Fittings

Stainless Steel Reducing (Face) Bushing

Features:

- Manufactured in type 316 stainless steel to meet any stringent sanitary condition
- Polished with standard “brite” finish to increase corrosion resistance and aesthetic appearance
- NPT Male by NPSM Female Threads
- No package quantity required



Applications:

Designed for use with stainless steel conduit to reduce sizes of threaded stainless conduit, nipples and other threaded fittings.

Part Number	Trade Size (in)	A (Height) (in)	B (Width) (in)	Wall Thickness (in)	Weight per each (in)
S60700FB05	3/4 x 1/2	0.750	1.010	0.013	0.05
S61000FB05	1 x 1/2	0.760	1.280	0.250	0.14
S61000FB07	1 x 3/4	0.760	1.290	0.013	0.07
S61200FB05	1 1/4 x 1/2	1.000	1.630	0.430	0.40
S61200FB07	1 1/4 x 3/4	1.000	1.640	0.330	0.32
S61200FB10	1 1/4 x 1	1.000	1.640	0.210	0.18
S61500FB05	1 1/4 x 1/2	1.000	1.860	0.556	0.60
S61500FB07	1 1/2 x 3/4	1.000	1.870	0.445	0.50
S61500FB10	1 1/2 x 1	1.020	1.870	0.320	0.36
S61500FB12	1 1/2 x 1 1/4	1.025	1.880	0.160	0.14
S62000FB05	2 x 1/2	1.020	2.360	0.800	1.06
S62000FB07	2 x 3/4	1.000	2.360	0.700	0.92
S62000FB10	2 x 1	1.000	2.360	0.560	0.79
S62000FB12	2 x 1 1/4	1.000	2.360	0.400	0.58
S62000FB15	2 x 1 1/2	1.020	2.360	0.280	0.38

All dimensions are for informational purposes only *Tolerances +/- 5%

Note: Contact factory for 2-1/2" - 6"

Stainless Steel Pulling Elbows

Features:

- Manufactured in type 316 stainless steel to meet any stringent sanitary condition
- Polished with standard “brite” finish to increase corrosion resistance and aesthetic appearance
- Cover, gasket and screw set included
- Smooth inner surface allows for trouble free installation
- No package quantity required

Certifications and Compliances:

- UL/cUL 514B Listed
- UL File # E308159
- Intended to be installed in accordance with ANSI/NFPA 70, National Electrical Code (NEC)

Materials:

- Body: 316SS
- Gasket: Neoprene
- Cover and Screws: 316SS

Applications:

Calbrite stainless steel pulling elbows are designed to connect threaded conduit or fittings to form 90° turns in conduit running to electrical fittings, junction boxes or enclosures.



Part Number	Trade Size (in)	Overall Length (in)	Overall Height (in)	C Hub Length (in)	Weight per each (lb)
S60700P900	3/4	2.870	1.600	0.800	0.310
S61000P900	1	3.780	2.020	1.160	0.630

All dimensions are for informational purposes only *Tolerances +/- 5%

Miscellaneous Fittings

Stainless Steel Drain Plugs

Features:

- Manufactured in type 316 stainless steel to meet any stringent sanitary condition
- Polished with standard “brite” finish to increase corrosion resistance and aesthetic appearance
- Designed for high performance condensation/fluid drainage and ventilation
- Designed for use with stainless steel conduit systems
- No package quantity required



Applications:

Calbrite's stainless steel Drain Plugs are manufactured to provide a method of easy drainage to an assembly and to minimize condensation and accumulation of water/fluids. The high quality design allows for simplified installations and use.

Part Number	Trade Size (in)	Length (in)	OD (in)	ID (in)	Weight per each (lb)
S60500DP00	0.975	0.975	1.610	0.500	0.170
S60700DP00	1.160	1.160	1.660	0.550	0.310
S61000DP00	1.500	1.500	1.500	0.800	0.680

All dimensions are for informational purposes only *Tolerances +/- 5%

Stainless Steel Escutcheon Plates, Wall Flanges

Features:

- Manufactured in type 316 stainless steel to meet any stringent sanitary condition
- Polished with standard “brite” finish to increase corrosion resistance and aesthetic appearance
- No package quantity required

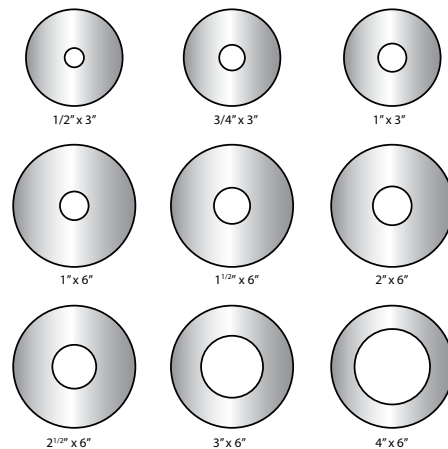
Applications:

Stainless steel Escutcheons are used in conjunction with mechanical, electrical, and plumbing components and fixtures where a pipe, tube or conduit passes through a wall [or other material] surface. The escutcheon is used to bridge the gap between the outside diameter of the conduit and the inside diameter of the opening.



Part Number	Trade Size (in)	Length (in)	OD (in)	ID (in)	Weight per each (lb)
S40500EP00	1/2	3	0.850	0.285	0.090
S40700EP00	3/4	3	1.060	0.350	0.100
S41000EP00	1	3	1.350	0.450	0.120
S41200EP00	1 1/4	6	1.750	0.585	0.380
S41500EP00	1 1/2	6	1.920	0.350	0.360
S42000EP00	2	6	2.400	0.440	0.340
S42500EP00	2 1/2	6	2.900	0.500	0.320
S43000EP00	3	6	3.530	0.500	0.300
S44000EP00	4	6	4.530	0.500	0.240

All dimensions are for informational purposes only *Tolerances +/- 5%



Miscellaneous Fittings

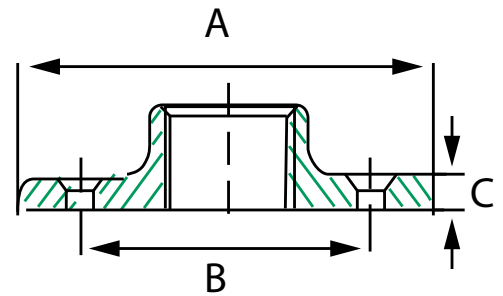
Stainless Steel Floor Flange

Features:

- Manufactured in type 316 stainless steel to meet any stringent sanitary condition
- Polished with standard “brite” finish to increase corrosion resistance and aesthetic appearance
- No package quantity required

Applications:

To secure stainless conduit to the wall or floor.



Part Number	Trade Size (in)	A (in)	B (in)	C (in)	Mtg Hole Dimension (in)	Weight per each (lb)
S60500FF00	½	3.000	2.100	0.360	0.264	0.750
S60700FF00	¾	3.400	2.400	0.400	0.264	1.250
S61000FF00	1	3.930	2.800	0.400	0.264	1.400
S61200FF00	1¼	4.200	3.200	0.440	0.264	1.800
S61500FF00	1½	4.600	3.450	0.440	0.319	2.040
S62000FF00	1½	5.100	4.000	0.445	0.319	2.500

All dimensions are for informational purposes only *Tolerances +/- 5%


Stainless Steel Grounding Bushing

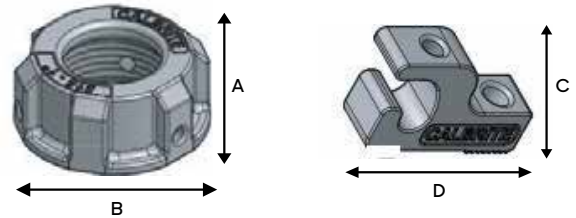
Features:

- Manufactured in type 316 stainless steel for increased corrosion resistance
- Polished with standard “brite” finish to increase corrosion resistance and aesthetic appearance
- Set screw provides fixed alignment and positive ground continuity
- Allows easy insertion of grounding conductor for thru or end connection
- No package quantity required



Certifications and Complies:

- UL 467 / CSA C22-41 Listed 
(Standard for Grounding and Bonding Equipment)
- UL 514B / CSA C22.2-18.3 Listed
(Standard for Conduit, Tubing and Cable Fittings)
- UL 486A-486B / CSA C22.2-65-13 Listed
(Standard for Safety for Wire Connectors)
- UL File # E352416



Applications:

For use on stainless steel Rigid or threaded IMC conduit, to provide a means of grounding conduit through a bushing.



Part Number	Trade Size (in)	A (in)	B (in)	C (in)	D (in)	Grounding Screw (in)	Weight per each (lb)
S60700GB00	1/2	0.732	1.560	1.313	0.850	10-24 X 3/4	0.270
S61000GB00	3/4	0.824	1.900	1.313	0.850	10-24 X 3/4	0.380
S61500GB00	1 1/2	0.840	2.440	1.313	0.850	10-24 X 3/4	0.480

All dimensions are for informational purposes only *Tolerances +/- 5%

Notes



Sanitary Strut



Sanitary Strut

BriteRail [™] Sanitary Strut	114
BriteRail [™] Accessories	116
FlatRail Sanitary Strut	118
FlatRail Accessories	120

Stainless Steel BriteRail[™] Sanitary Strut

Features:

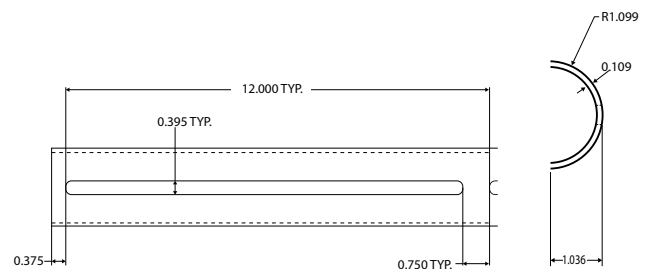
- Manufactured in type 304 stainless steel with excellent structural strength
- Polished to a bright, easily maintainable finish that is modern, attractive, easy to clean and that also enhances the surface's resistance to pitting and bacterial corrosion
- Continuous slot design provides maximum flexibility and reduced labor time to install
- Excellent strength to weight ratio allows for ease of installation
- Patent pending
- Patent # D830,153

Certifications and Compliances:

- NSF 169 Certified

Applications:

BriteRail[™] is a new, innovative design in conduit support systems for sanitary and wash-down applications commonly found in food processing and pharmaceutical industries. The custom dome-shape design eliminates any flat surface where debris or bacteria can form, and eliminates the ability for water to pool during the wash-down process.



Part Number	Length (ft)	Mounting Slot Length (in)	Mounting Slot Width (in)	Overall Height (in)	Overall Width (in)	Mounting Rod (in)	Weight per Ft (lb)
S40000STBR	10	11.25	0.395	1.036	2.500	3/8	1.03
S40020STBR	2	11.25	0.395	1.036	2.500	3/8	1.03
S40030STBR	3	11.25	0.395	1.036	2.500	3/8	1.03
S40040STBR	4	11.25	0.395	1.036	2.500	3/8	1.03
S40050STBR	5	11.25	0.395	1.036	2.500	3/8	1.03
S40060STBR	6	11.25	0.395	1.036	2.500	3/8	1.03

All dimensions are for informational purposes only *Tolerances +/- 5%

Sanitary Strut

Stainless Steel BriteRail™ Sanitary Strut

Wall Loads - Horizontal

Length (in)	Max Load Uniform (lb)	Deflection (in)
12	250	0.059
24	250	0.049
36	250	0.068
48	250	0.129
60	250	0.189

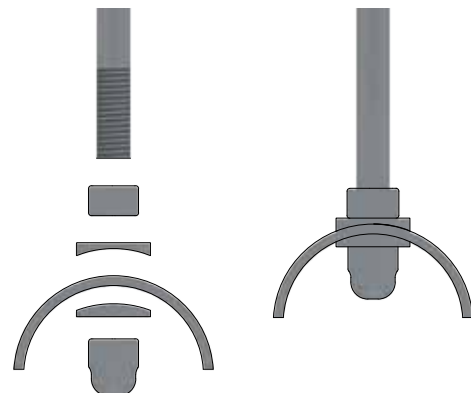
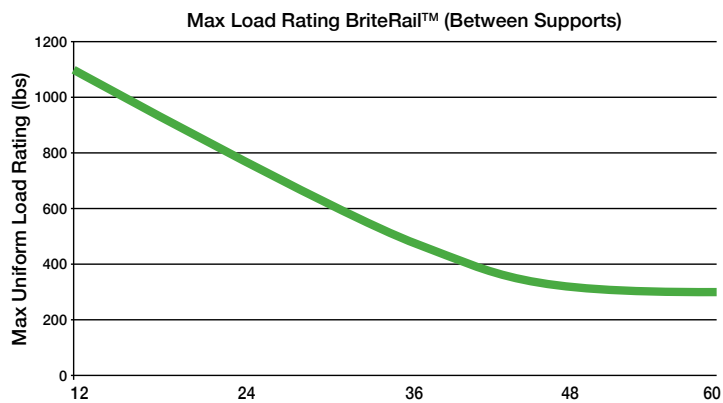
Suspended Loads

Length (in)	Max Load Uniform (lb)	Deflection (in)
12	1100	0.119
24	750	0.094
36	500	0.171
48	325	0.287
60	275	0.471

Wall Loads - Vertical

Length (in)	Max Load Uniform (lb)	Deflection (in)
12	375	0.000
24	375	0.000
36	375	0.000
48	375	0.000
60	375	0.000

NOTE: Load ratings are calculated between support rods, to exceed 60" length additional support rods will be required. Do not exceed length to load specifications



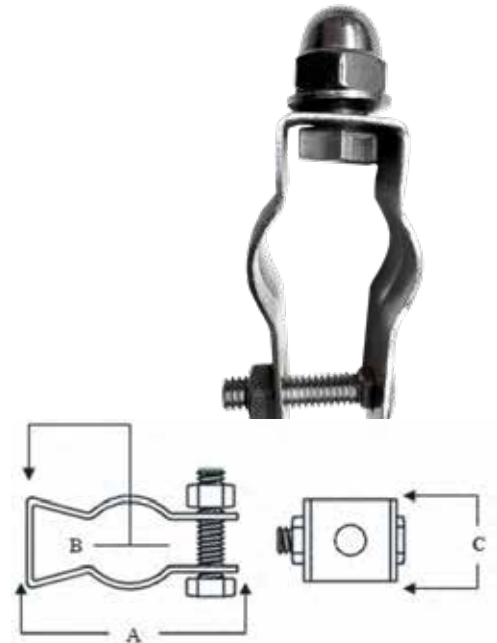
Stainless Steel BriteRail™ Conduit Hanger

Features:

- Manufactured in type 316 stainless steel to meet any stringent sanitary condition
- Polished with standard "brite" finish to increase corrosion resistance and aesthetic appearance
- Designed for use with stainless rigid, stainless IMC, galvanized and aluminum conduit, on BriteRail sanitary conduit support system
- Type 316 stainless steel nut and bolt (carriage), mounting bolt, saddle washer, and acorn nut included
- No package quantity required

Applications:

Heavy duty type 316 stainless steel conduit hangers are great for securing and mounting conduit, tubing and cable in corrosive environments.



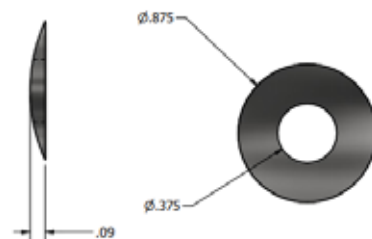
Part Number	Trade Size (in)	A (in)	B (in)	C (in)	Nut & Bolt Size/ Bolt Hole Size (in)	Weight per each (lb)
S60500MHBR	1/2	1.900	7/8	0.750	3/8	0.13
S60700MHBR	3/4	2.350	1 5/16	0.870	3/8	0.15
S61000MHBR	1	2.630	1 1/8	0.870	3/8	0.16
S61200MHBR	1 1/4	3.300	1 3/8	0.870	3/8	0.18
S61500MHBR	1 1/2	3.380	1 7/16	1.250	3/8	0.26
S62000MHBR	2	4.150	2	1.250	3/8	0.30

All dimensions are for informational purposes only *Tolerances +/- 5%

Stainless Steel BriteRail™ Curved Saddle Washer

Part Number	Trade Size (in)	Outside Diameter (in)	Inside Diameter (in)	Thickness (in)	Weight per each (lb)
S6030SWTBR	3/8	0.875	0.390	0.090	0.02
S6030SWBBR	3/8	0.875	0.390	0.050	0.01

All dimensions are for informational purposes only *Tolerances +/- 5%



Sanitary Strut

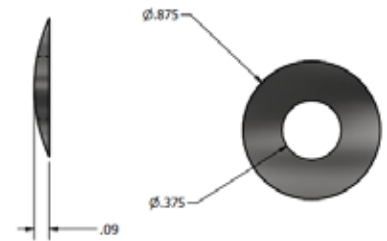
Stainless Steel BriteRail™ U-Bolts

Features:

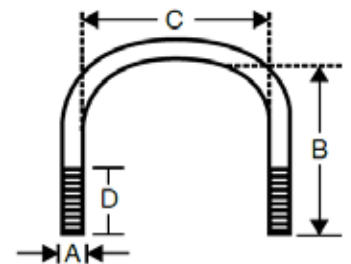
- Manufactured in type 316 stainless steel for increased corrosion resistance
- Polished with standard “brite” finish to increase corrosion resistance and aesthetic appearance
- Figure 137 Style
- Two type 316 stainless steel acorn nuts and two saddle washers included
- No package quantity required

Applications:

Used to mount and secure stainless conduit onto BriteRail sanitary strut systems.



Part Number	Trade Size (in)	A (in)	B (in)	C (in)	D (in)	Weight per each (lb)
S60500UBBR	1/2	3/8	1.510	0.928	0.530	0.17
S60700UBBR	3/4	3/8	1.720	1.180	0.530	0.18
S61000UBBR	1	3/8	1.985	1.400	0.530	0.20
S61200UBBR	1 1/4	3/8	2.330	1.810	0.530	0.22
S61500UBBR	1 1/2	3/8	2.570	2.030	0.530	0.24
S62000UBBR	2	3/8	2.960	2.500	0.530	0.33



All dimensions are for informational purposes only *Tolerances +/- 5%

Stainless Steel BriteRail™ Hanger Rod

Part Number	Trade Size (in)	Length (in)	Weight per each (lb)
S603144HRBR-PE	3/8	12	4.368
S603144HRBR	3/8	12	4.368
S60372HRBR-PE	3/8	6	2.184
S60372HRBR	3/8	6	2.184
S60336HRBR-PE	3/8	3	1.092
S60336HRBR	3/8	3	1.092
S60312HRBR-PE	3/8	1	0.364
S60312HRBR	3/8	1	0.364



All dimensions are for informational purposes only *Tolerances +/- 5%

Stainless Steel FlatRail Sanitary Strut

Features:

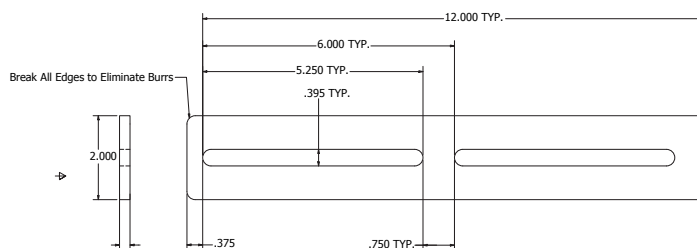
- Manufactured in type 304 stainless steel with excellent structural strength
- Polished to a bright, easily maintainable finish that is modern, attractive, easy to clean and that also enhances the surface's resistance to pitting and bacterial corrosion
- Continuous slot design provides maximum flexibility and reduced labor time to install
- Suitable for horizontal or vertical wall mount applications
- Excellent strength to weight ratio allows for ease of installation

Certifications and Compliances:

- NSF 169 Certified

Applications:

FlatRail is a new design in BriteRail[™] support systems for sanitary and wash-down applications commonly found in food processing and pharmaceutical industries. The custom flat-shape design eliminates any surface where debris or bacteria can form, and eliminates the ability for water to pool during the wash-down process.

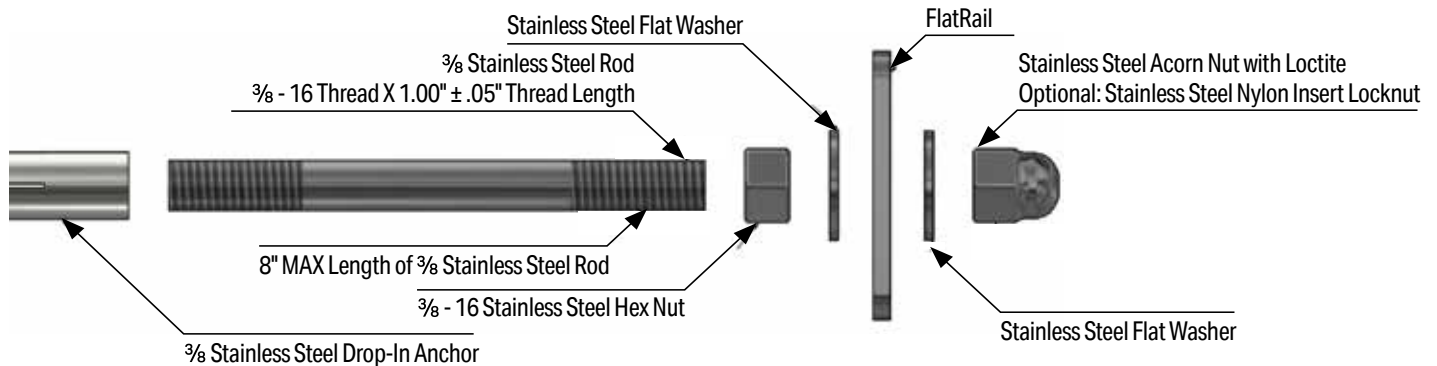
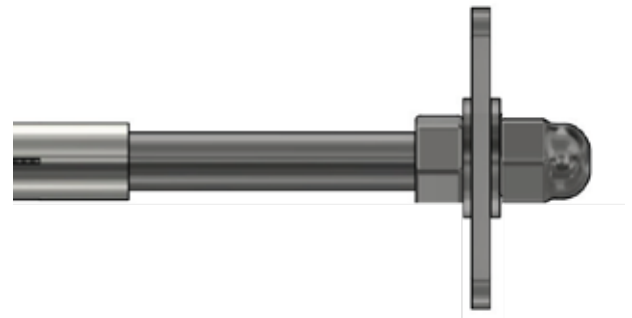
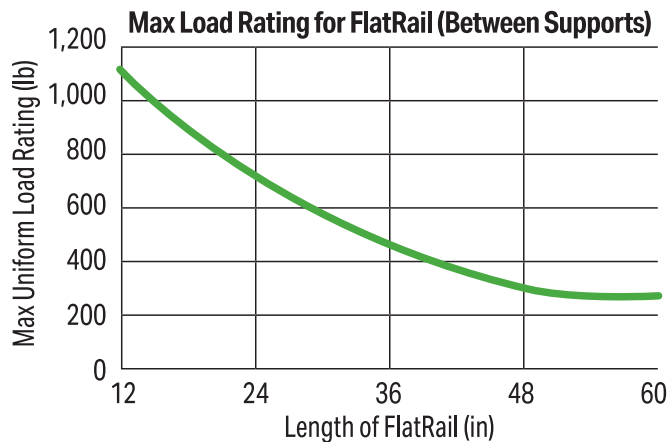


Part Number	Length (ft)	Mounting Slot Length (in)	Mounting Slot Width (in)	Overall Height (in)	Overall Width (in)	Mounting Rod (in)	Weight per Ft (lb)
S40000FRBR	10	5.25	0.395	1.036	2.500	3/8	1.03
S40020FRBR	2	5.25	0.395	1.036	2.500	3/8	1.03
S40030FRBR	3	5.25	0.395	1.036	2.500	3/8	1.03
S40040FRBR	4	5.25	0.395	1.036	2.500	3/8	1.03
S40050FRBR	5	5.25	0.395	1.036	2.500	3/8	1.03
S40060FRBR	6	5.25	0.395	1.036	2.500	3/8	1.03

All dimensions are for informational purposes only *Tolerances +/- 5%

Sanitary Strut

Stainless Steel FlatRail Sanitary Strut



Wall Loads - Horizontal

Length (in)	Max Load Uniform (lb)	Deflection (in)
12	250	0.059
24	250	0.049
36	250	0.068
48	250	0.129
60	250	0.189

Wall Loads - Vertical

Length (in)	Max Load Uniform (lb)	Deflection (in)
12	375	0.000
24	375	0.000
36	375	0.000
48	375	0.000
60	375	0.000

NOTE: Load ratings are calculated between support rods, to exceed 60" length additional support rods will be required. Do not exceed length to load specifications

Atkore[™] Calbrite

Sanitary Strut

Stainless Steel Mini Hanger

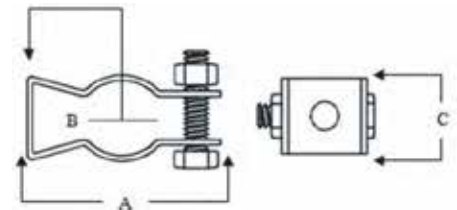
Features:

- Manufactured in type 316 stainless steel to meet any stringent sanitary condition
- Polished with standard “brite” finish to increase corrosion resistance and aesthetic appearance
- Designed for use with stainless EMT
- Type 316 stainless steel nut and bolt (carriage) included
- No package quantity required



Applications:

Heavy duty type 316 stainless steel conduit hangers are great for securing and mounting conduit tubing and cable in corrosive environments.



Part Number	Trade Size (in)	A (in)	B (in)	C (in)	Bolt Hole Size (in)	Weight per each (lb)
S20500MH00	½	1.910	⅞	0.765	¼	0.060
S20700MH00	¾	1.930	1⅝	0.770	¼	0.070
S21000MH00	1	2.370	1⅞	0.865	¼	0.080
S21200MH00	1¼	2.600	1⅞	0.870	¼	0.100
S21500MH00	1½	3.270	1⅞	0.870	¼	0.120
S22000MH00	2	3.780	2	1.250	¼	0.220

All dimensions are for informational purposes only *Tolerances +/- 5%



Sanitary Strut

Stainless Steel Flatrail Conduit Hanger

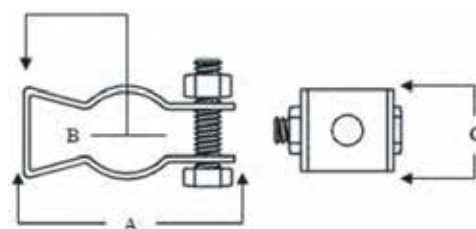
Features:

- Manufactured in type 316 stainless steel to meet any stringent sanitary condition
- Polished with standard "brite" finish to increase corrosion resistance and aesthetic appearance
- Designed for use with stainless rigid or stainless IMC, on FlatRail sanitary support conduit system
- Type 316 stainless steel nut and bolt (carriage), mounting bolt, fender washer, and acorn nut included
- No package qty. required



Applications:

Heavy duty type 316 stainless steel conduit hangers are great for securing and mounting conduit, tubing and cable in corrosive environments.



Part Number	Trade Size (in)	A (in)	B (in)	C (in)	Nut & Bolt Size/ Bolt Hole Size (in)	Weight each per (lb)
S605FRMHBR	½	1.900	⅞	0.750	⅜	0.13
S607FRMHBR	¾	2.350	1⅝	0.870	⅜	0.15
S610FRMHBR	1	2.630	1⅞	0.870	⅜	0.16
S612FRMHBR	1¼	3.300	1⅞	0.870	⅜	0.18
S615FRMHBR	1½	3.380	1⅞	1.250	⅜	0.26
S620FRMHBR	2	4.150	2	1.250	⅜	0.30

All dimensions are for informational purposes only *Tolerances +/- 5%



Stainless Steel FlatRail Wall Mounting Kit

Features:

- Manufactured in type 316 stainless steel to meet any stringent sanitary condition
- Polished with standard “brite” finish to increase corrosion resistance and aesthetic appearance
- Provides excellent strength and durability to service a variety of installation requirements

Applications:

Used to mount the FlatRail conduit support system, the Wall Mount Kit is comprised of a split ring extension and custom thread that fits in the FlatRail so no threads are exposed when assembled. Included are (1) hex nut, (2) flat washers, and (1) acorn nut. It can be used with a Drop in Anchor or Split Ring Mounting Plate. It comes in four lengths: 3”, 4”, 5” or 6”.



Part Number	Bolt Size (in)	Length (in)	Mounting Thread Length (in)	Accessory Thread Length (in)	Wall Offset (in)	Weight per each (lb)
S60303HRBR	3/8	3	3/4	1/2	2.25	0.146
S60304HRBR	3/8	4	3/4	1/2	3.25	0.176
S60305HRBR	3/8	5	3/4	1/2	4.25	0.208
S60306HRBR	3/8	6	3/4	1/2	5.25	0.240

All dimensions are for informational purposes only *Tolerances +/- 5%

Sanitary Strut

Stainless Steel Flat Washer

Part Number	Trade Size (in)	Outside Diameter (in)	Inside Diameter (in)	Thickness (in)	Weight per each (lb)
S60200WA00	¼	0.622	0.250	0.045	0.005
S60300WA00	⅜	0.870	0.375	0.050	0.010
S60500WA00	½	1.250	0.520	0.060	0.020
S60600WA00	⅝	1.500	0.650	0.078	0.030

All dimensions are for informational purposes only *Tolerances +/- 5%

Stainless Steel Split Ring Mounting Plates

Part Number	Trade Size (in)	Overall Length (in)	Overall Width (in)	Overall Height (in)	Screw Size (in)	Thickness (in)	Center to Center (Mtg Holes) (in)	Weight per each (lb)
S60300SPMP	⅜	2.750	1.350	0.450	#12	0.185	2.000	0.880
S60500SPMP	½	2.750	1.350	0.450	#12	0.190	2.000	1.110

All dimensions are for informational purposes only *Tolerances +/- 5%

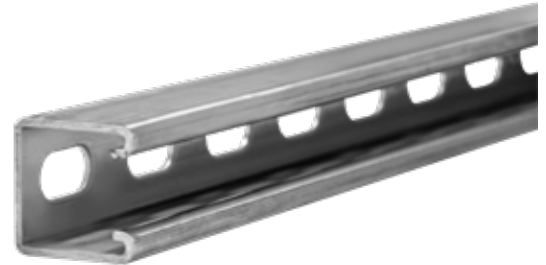
Stainless Steel Drop-In Anchors

Part Number	Anchor Size (in)	Hole Diameter (in)	Embedment (in)	PSI	Tensile Strength	Shear	Thread Depth (in)	Anchor Length (in)	Weight per 100 (lb)
S60200DR00	¼	¼	1	4000	2067	2750	½	1	2.88
S60300DR00	⅜	⅜	1⅞	4000	3995	5169	⅝	1⅞	6.32
S60500DR00	½	½	2	4000	4110	7444	¾	2	11.56
S60600DR00	⅝	⅝	2⅜	4000	5750	12212	1	2⅞	34.80
S60700DR00	¾	¾	2½	4000	10807	14223	1¼	3⅞	48.00

All dimensions are for informational purposes only *Tolerances +/- 5%



Strut & Strut Accessories



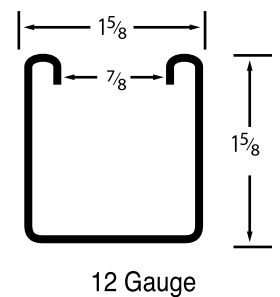
Strut & Strut Accessories

1 5/8" Slotted Strut	126
7/8" Slotted Strut	127
1 5/8" Solid Strut	128
7/8" Solid Strut	129
1 5/8" Back to Back Strut	130
7/8" Back to Back Strut	131
Flat Plates	132
Brackets	133
Channel Nuts with Spring	134
Post Base for Channel	135
Hanger Rod	136
Threaded Rod	137
Rod Coupling	138
Drop-In Anchors	139
Saddle Washer	142

Stainless Steel 1 5/8" Slotted Strut

Features:

- Manufactured in both type 304 and 316 stainless to meet any stringent sanitary condition
- Polished to a brite, easily maintainable finish that is modern, attractive, easy to clean, and that also enhances the surface's resistance to pitting and bacterial corrosion
- Calbrite stainless steel strut functions in exactly the same way as any other metallic strut
- Channels provided by Calbrite are available in 12 different basic sizes which are subjected to further variation in gauge and depth



Certifications and Compliances:

- UL 5B Listed
- For installation in accordance with Article 384 of ANSI/NFPA 70, National Electrical Code (NEC)
- ASTM A240, ASTM A1011 SS

Applications:

The Calbrite system of metal framing is based on the use of a continuous slotted channel, and a series of brackets and fittings, which can be fastened to it at any point. With Calbrite channel and components, racks, supports for conduit, wiring, electrical equipment, machine frames, and a limitless variety of structures can be built rapidly, simply and economically.



Type 304 Part Number	Type 316 Part Number	Size (in)	Width of Hole (in)	Length of Hole (in)	Distance Between Holes (in)	Width of Lip (in)	Sectional Area (in)	Weight per L.F. (lb)
S45810ST58	S65810ST58	1 5/8 x 1 5/8	9/16	1 1/8	7/8	3/8	.559	1.65

All dimensions are for informational purposes only *Tolerances +/- 5%

Strut & Strut Accessories

Stainless Steel 7/8" Slotted Strut

Features:

- Manufactured in both type 304 and 316 stainless to meet any stringent sanitary condition
- Polished to a bright, easily maintainable finish that is modern, attractive, easy to clean, and that also enhances the surface's resistance to pitting and bacterial corrosion
- Calbrite stainless steel strut functions in exactly the same way as any other metallic strut
- Channels provided by Calbrite are available in 12 different basic sizes which are subjected to further variation in gauge and depth

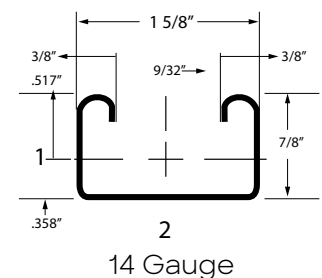


Certifications and Compliances:

- UL 5B Listed
- For installation in accordance with Article 384 of ANSI/NFPA 70, National Electrical Code (NEC)

Applications:

The Calbrite system of metal framing is based on the use of a continuous slotted channel, and a series of brackets and fittings, which can be fastened to it any point. With Calbrite channel and components, racks, supports for conduit, wiring, and electrical equipment, machine frames, and a limitless variety of structures can be built rapidly, simply and economically.



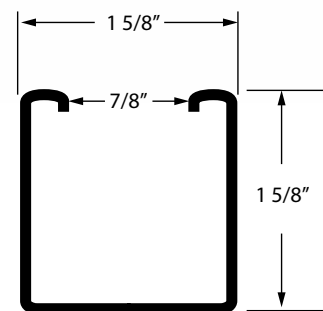
Type 304 Part Number	Type 316 Part Number	Size (in)	Width of Hole (in)	Length of Hole (in)	Distance Between Hole (in)	Width of Lip (in)	Sectional Area (in)	Weight per L.F. (lb)
S45810ST78	S65810ST78	1 5/8 x 7/8	9/16	1 1/8	7/8	3/8	0.285	0.970

All dimensions are for informational purposes only *Tolerances +/- .5%

Stainless Steel 1 5/8 Solid Strut

Features:

- Manufactured in both type 304 and 316 stainless to meet any stringent sanitary condition
- Polished to a bright, easily maintainable finish that is modern, attractive, easy to clean, and that also enhances the surface's resistance to pitting and bacterial corrosion
- Calbrite stainless steel strut functions in exactly the same way as any other metallic strut
- Channels provided by Calbrite are available in 12 different basic sizes which are subjected to further variation in gauge and depth



Certifications and Compliances:

- UL 5B Listed
- For installation in accordance with Article 384 of ANSI/NFPA 70, National Electrical Code(NEC)

Applications:

The Calbrite system of metal framing is based on the use of a continuous solid channel, and a series of brackets and fittings, which can be fastened to it any point. With Calbrite channel and components, racks, supports for conduit, wiring, and electrical equipment, machine frames, and a limitless variety of structures can be built rapidly, simply and economically.



Type 304 Part Number	Type 316 Part Number	Size (in)	Height of Lip (in)	Width of Lip (in)	Sectional Area (in)	Weight each per L.F. (lb)
S45810SL58	S65810SL58	1 5/8 x 5/8	7/32	3/8	0.559	1.90

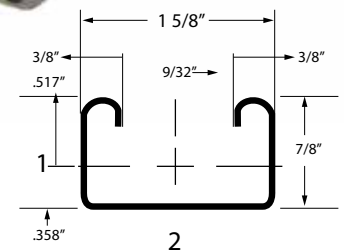
All dimensions are for informational purposes only *Tolerances +/- 5%

Strut & Strut Accessories

Stainless Steel 7/8 Solid Strut

Features:

- Manufactured in both type 304 and 316 stainless to meet any stringent sanitary condition
- Polished to a bright, easily maintainable finish that is modern, attractive, easy to clean, and that also enhances the surface's resistance to pitting and bacterial corrosion
- Calbrite stainless steel strut functions in exactly the same way as any other metallic strut
- Channels provided by Calbrite are available in 12 different basic sizes which are subjected to further variation in gauge and depth



14 Gauge

Certifications and Compliances:

- UL 5B Listed
- For installation in accordance with Article 384 of ANSI/NFPA 70, National Electrical Code (NEC)

Applications:

The Calbrite system of metal framing is based on the use of a continuous solid channel, and a series of brackets and fittings, which can be fastened to it any point. With Calbrite channel and components, racks, supports for conduit, wiring, and electrical equipment, machine frames, and a limitless variety of structures can be built rapidly, simply and economically.



Type 304 Part Number	Type 316 Part Number	Size (in)	Height of Lip (in)	Width of Lip (in)	Sectional Area (in)	Weight each per L.F. (lb)
S45810SL78	S65810SL78	1 5/8 x 7/8	9/32	3/8	0.285	1.00

All dimensions are for informational purposes only *Tolerances +/- 5%

Stainless Steel 1 5/8" Back to Back Strut - Solid & Slotted

Features:

- Manufactured in both type 304 and 316 stainless to meet any stringent sanitary condition
- Polished to a bright, easily maintainable finish that is modern, attractive, easy to clean, and that also enhances the surface's resistance to pitting and bacterial corrosion
- Calbrite stainless steel strut functions in exactly the same way as any other metallic strut
- Channels provided by Calbrite are available in 12 different basic sizes which are subjected to further variation in gauge and depth



Certifications and Compliances:

- UL 5B Listed
- For installation in accordance with Article 384 of ANSI/NFPA 70, National Electrical Code (NEC)

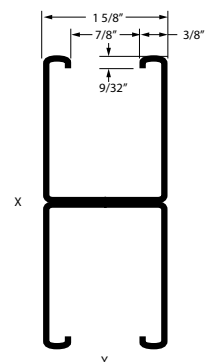
Applications:

The Calbrite system of metal framing is based on the use of a continuous solid or slotted channel, and a series of brackets and fittings, which can be fastened to it any point. With Calbrite channel and components, racks, supports for conduit, wiring, electrical equipment, machine frames, and a limitless variety of structures can be built rapidly, simply and economically.



Type 304 Part Number Slotted	Type 316 Part Number Slotted	Size (in)	Overall Height (in)	Sectional Area (in)	Weight each per L.F. (lb)
S45810SB58	S65810SB58	1 5/8	3 1/4	1.118	3.40
Type 304 Part Number Solid	Type 316 Part Number Solid	Size (in)	Overall Height (in)	Sectional Area (in)	Weight each per L.F. (lb)
S45810SBL5	S65810SBL5	1 5/8	3 1/4	1.118	3.80

All dimensions are for informational purposes only *Tolerances +/- .5%



Strut & Strut Accessories

Stainless Steel 7/8" Back to Back Strut - Solid & Slotted

Features:

- Manufactured in both type 304 and 316 stainless to meet any stringent sanitary condition
- Polished to a bright, easily maintainable finish that is modern, attractive, easy to clean, and that also enhances the surface's resistance to pitting and bacterial corrosion
- Calbrite stainless steel strut functions in exactly the same way as any other metallic strut
- Channels provided by Calbrite are available in 12 different basic sizes which are subjected to further variation in gauge and depth



Certifications and Compliances:

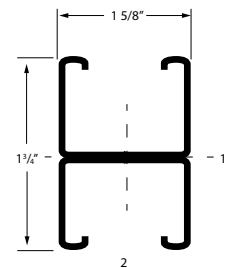
- UL 5B Listed
- For installation in accordance with Article 384 of ANSI/NFPA 70, National Electrical Code (NEC)

Applications:

The Calbrite system of metal framing is based on the use of a continuous solid or slotted channel, and a series of brackets and fittings, which can be fastened to it any point. With Calbrite channel and components, racks, supports for conduit, wiring, electrical equipment, machine frames, and a limitless variety of structures can be built rapidly, simply and economically.



Type 304 Part Number Slotted	Type 316 Part Number Slotted	Size (in)	Overall Height (in)	Sectional Area (in)	Weight each per L.F. (lb)
S45810SB78	S65810SB78	7/8	1 5/8	0.571	1.74
Type 304 Part Number Solid	Type 316 Part Number Solid	Size (in)	Overall Height (in)	Sectional Area (in)	Weight each per L.F. (lb)
S45810SBL7	S65810SBL7	7/8	1 5/8	0.571	1.94

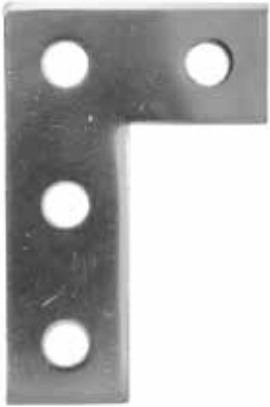


All dimensions are for informational purposes only *Tolerances +/- 5%

Stainless Steel Flat Plates

Applications:

Flat Plates are used for connecting sections of channel strut together, horizontal and vertical strut sections, forming a splice joint. Calbrite flat plates are constructed from type 316 stainless steel and features 9/16" holes.



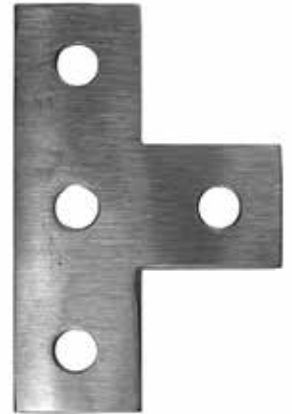
4-Hole Flat
Angle Plates
S600004BF0



4-Hole Cross Plates
S60000PLCR



4-Hole Splice Plates
S60000PL4S



4-Hole Tee Plates
S60000PLTE



Strut & Strut Accessories

Stainless Steel Brackets

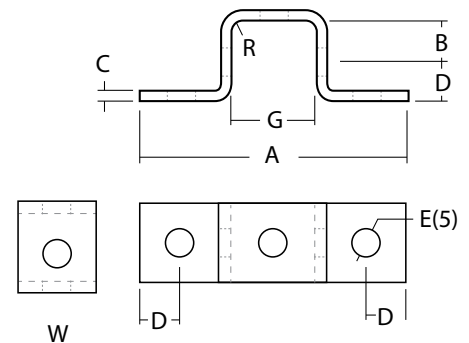
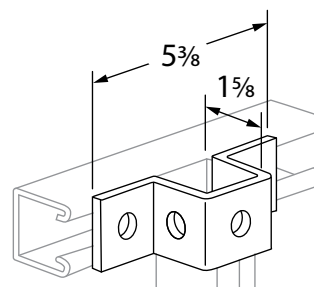
Features:

- Manufactured in type 316 stainless steel to meet any stringent sanitary condition
- Polished with standard brite, easily maintainable finish that is modern, attractive, easy to clean, and that also enhances the surface's resistance to pitting & bacterial corrosion
- Internally threaded anchor allows easy bolt removability and service work
- Standard NPT threads allow for trouble-free installations
- Shallow embedment depth with high performance
- No package quantity required



Applications:

For use in structural fastening. Internally threaded, flush-mounted.



Part Number	Hole Diameter (in)	Embedment (in)	PSI (in)	Tensile Strength	Shear	Thread Depth (in)	Anchor Length (in)	Weight per 100 (lb)
S60000UF00	9/16	1.000	4000	2067	2750	1/2	1.000	2.880

Part Number	A Length (in)	B (in)	C (in)	D (in)	E (in)	G (in)	W (in)	Weight each per (lb)
S60500UF00	5.640	1.800	0.250	0.850	9/16	1.820	1.600	0.750

All dimensions are for informational purposes only *Tolerances +/- 5%

Stainless Steel Channel Nuts with Spring

Features:

- Manufactured in type 316 stainless steel to meet any stringent sanitary condition
- Polished with standard “brite” finish to increase corrosion resistance and aesthetic appearance
- No package quantity required

Applications:

Designed for use with standard 1 $\frac{5}{8}$ ” channels.



Part Number	Trade Size (in)	Height (in)	Blank Style & Thickness (in)	Thread Diameter (in)	Weight per each (lb)
S60000CN11	1/4	1.810	1/4	1/4 - 20	0.080
S60000CN31	3/8	1.930	3/8	3/8 - 16	0.100
S60000CN41	1/2	1.940	1/2	1/2 - 13	0.120
S60000CN51	5/8	1.950	7/16	5/8 - 11	0.200
S60000CN61	7/8	1.970	1/2	7/8 - 9	0.230

All dimensions are for informational purposes only *Tolerances +/- 5%

Strut & Strut Accessories

Stainless Steel Post Base for Channels

Features:

- Manufactured in both type 304 and 316 stainless to meet any stringent sanitary condition
- Polished to a bright, easily maintainable finish that is modern, attractive, easy to clean, and that also enhances the surface's resistance to pitting and bacterial corrosion
- Fits 1 $\frac{5}{8}$ " Channel
- Calbrite stainless steel strut and fittings function in exactly the same way as any other metallic strut

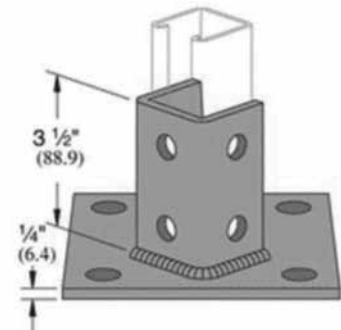


Applications:

The Calbrite system of metal framing is based on the use of a continuous solid and slotted channel, and a series of brackets and fittings, which can be fastened to it any point. With Calbrite channel and components, racks, supports for conduit, wiring, and electrical equipment, machine frames, and a limitless variety of structures can be built rapidly, simply and economically.

Type 304 Part Number	Type 304 Part Number	Type 304 width each per (lb)	Type 316 width each per (lb)
S45800PB00	S65800PB00	3.56	3.27

All dimensions are for informational purposes only *Tolerances +/- 5%



**PLEASE VERIFY WEIGHT
AND TABLE**

Stainless Steel Hanger Rod

Part Number	Length (in)	Metric Size (m)	OD (in)	ID (in)	Weight per each (lb)
S60000HR00	3.280	1.000	0.535	0.313	1.760

All dimensions are for informational purposes only *Tolerances +/- 5%



Strut & Strut Accessories

Stainless Steel Threaded Rod

Features:

- Compatible with Calbrite™ stainless steel rod couplings
- Manufactured in both type 304 and 316 stainless to meet any stringent sanitary condition
- Polished with standard “brite” finish to increase corrosion resistance and aesthetic appearance
- Excellent strength and durability
- Manufactured in 12' lengths

Certifications and Compliances:

- National Coarse (USS) and UN-8

Applications:

Designed for hanging, connecting, clamping, and supporting in electrical, heating and plumbing applications.



Part Number	Trade Size (in)	Grade	Threads per Inch	Weight per each (lb)
S40212TR00	1/4	304 SS	20	12.3
S40312TR00	3/8	304 SS	16	29.6
S40512TR00	1/2	304 SS	13	53.9
S60212TR00	1/4	316 SS	20	12.3
S60312TR00	3/8	316 SS	16	29.6
S60512TR00	1/2	316 SS	13	53.9

All dimensions are for informational purposes only *Tolerances +/- 5%



Stainless Steel Rod Couplings

Features:

- Manufactured in type 316 stainless steel for increased corrosion resistance
- Polished with standard “brite” finish to increase corrosion resistance and aesthetic appearance
- No package quantity required

Applications:

Used to join threaded rod.



Part Number	Trade Size (in)	Design Load Rating (lb)	Overall Height (in)	Overall Width (in)
S60200RC00	1/4	0.875	20	0.020
S60300RC00	3/8	1.125	16	0.040
S60500RC00	1/2	1.270	13	0.060
S60700RC00	3/4	2.000	10	0.260

All dimensions are for informational purposes only *Tolerances +/- 5%



Strut & Strut Accessories

Stainless Steel Drop-In Anchors

Features:

- Manufactured in type 316 stainless steel to meet any stringent sanitary condition
- Polished to a bright, easily maintainable finish that is modern, attractive, easy to clean, and that also enhances the surface's resistance to pitting & bacterial corrosion
- Internally threaded anchor allows easy bolt removability and service work
- Standard NPT threads allow for trouble-free installations
- Shallow embedment depth with high performance
- No package quantity required



Applications:

For use in structural fastening. Internally threaded, flush-mounted.

Part Number	Anchor Size (in)	Hole Diameter (in)	Embedment (in)	PSI	Tensile Strength	Shear	Thread Depth (in)	Anchor Length (in)	Weight per 100 (lb)
S60200DR00	1/4	1/4	1	4000	2067	2750	1/2	1	2.88
S60300DR00	3/8	3/8	1 1/6	4000	3995	5169	5/8	1 1/6	6.32
S60500DR00	1/2	1/2	2	4000	4110	7444	3/4	2	11.56
S60600DR00	5/8	5/8	2 3/8	4000	5750	12212	1	2 1/6	34.80
S60700DR00	3/4	3/4	2 1/2	4000	10807	14223	1 1/4	3 1/6	48.00

All dimensions are for informational purposes only *Tolerances +/- 5%

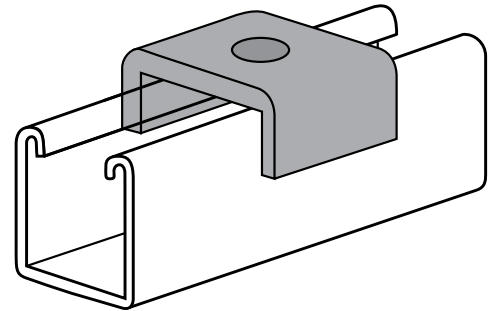
Stainless Steel Saddle Washers

Features:

- Manufactured in type 316 stainless steel for increased corrosion resistance
- Polished with standard “brite” finish to increase corrosion resistance and aesthetic appearance
- Designed for use with 1 $\frac{5}{8}$ ” stainless steel strut
- No package quantity required

Applications:

Calbrite’s stainless steel Saddle Washers are designed for connecting stainless steel strut and a variety of stainless strut accessories with the use of Threaded Rod.



Part Number	Trade Size (in)	Width (in)	Length (in)	Hole Diameter (in)	Thickness (in)	Weight per each (lb)
S60300STSW	$\frac{3}{8}$	1.950	1.600	0.310	0.110	0.120
S60700STSW	$\frac{1}{2}$	1.950	1.600	0.436	0.110	0.110
S60600STSW	$\frac{5}{8}$	1.950	1.600	0.550	0.110	0.100

All dimensions are for informational purposes only *Tolerances +/- 5%

Notes





Hardware

Hex Head Cap Screws	146
Sealing Locknuts	147
Locknuts	148
Standard Flat Washers	149
Lock Washers	150
Grounding Locknuts	151
Fender Washers	152
Square Washers	153
Hex Nuts	154
Slotted Machine Screws	154

Stainless Steel Hex Head Cap Screws

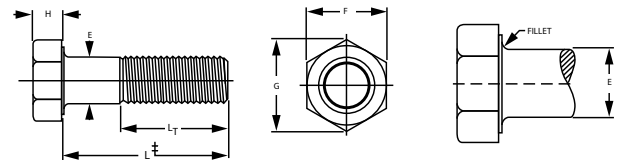
Features:

- Manufactured in type 316 stainless steel to meet any stringent sanitary condition
- Polished with standard “brite” finish to increase corrosion resistance and aesthetic appearance
- No package quantity required
- Hardness
 $\frac{1}{4}$ " through $\frac{5}{8}$ " diameter: Rockwell B95 - C32
 $\frac{3}{4}$ " through 1" diameter: Rockwell B80 - C32
- Yield Strength
 $\frac{1}{4}$ " through $\frac{5}{8}$ " diameter, 2.25D and longer: 65,000 psi. minimum
 $\frac{3}{4}$ " (2.25D & longer) & $\frac{7}{8}$ " through 1" diameter (3D & longer): 45,000 psi minimum
- Tensile Strength
 $\frac{1}{4}$ " through $\frac{5}{8}$ in. diameter, 2.25D and longer: 100,000 - 150,000 psi.
 $\frac{3}{4}$ " (2.25D & longer) & $\frac{7}{8}$ " through 1" diameter (3D & longer): 85,000 -140,000 psi



Applications:

General purpose threaded fasteners for insertion into pre-tapped holes or for use with nuts.



Nominal or Basic Product Diameter (in)		E Body Diameter (in)		F Width Across Flats (in)			G Width Across Corners (in)		H Head Height (in)			L Thread Length (in)	
		Max	Min	Basic	Max	Min	Max	Min	Basic	Max	Min	For Screw Lengths ≤ 6 in.	For Screw Lengths > 6 in.
$\frac{1}{4}$	0.2500	0.2500	0.2450	$\frac{7}{16}$	0.438	0.428	0.505	0.488	$\frac{5}{32}$	0.163	0.150	0.750	1.000
$\frac{5}{16}$	0.3125	0.3125	0.3065	$\frac{1}{2}$	0.500	0.489	0.577	0.557	$\frac{3}{64}$	0.211	0.195	0.875	1.125
$\frac{3}{8}$	0.3750	0.3750	0.3690	$\frac{9}{16}$	0.562	0.551	0.650	0.628	$\frac{5}{64}$	0.243	0.226	1.000	1.250
$\frac{7}{16}$	0.4375	0.4375	0.4305	$\frac{5}{8}$	0.625	0.612	0.722	0.698	$\frac{9}{32}$	0.291	0.272	1.125	1.375
$\frac{1}{2}$	0.5000	0.5000	0.4930	$\frac{3}{4}$	0.750	0.736	0.866	0.840	$\frac{5}{16}$	0.323	0.302	1.250	1.500
$\frac{9}{16}$	0.5625	0.5625	0.5545	$1\frac{1}{16}$	0.812	0.798	0.938	0.910	$2\frac{3}{64}$	0.371	0.348	1.375	1.625
$\frac{5}{8}$	0.6250	0.6250	0.6170	$1\frac{1}{8}$	0.938	0.922	1.083	1.051	$2\frac{5}{64}$	0.403	0.378	1.500	1.750
$\frac{3}{4}$	0.7500	0.7500	0.7410	1 $\frac{1}{8}$	1.125	1.100	1.299	1.254	$1\frac{5}{32}$	0.483	0.455	1.750	2.000
$\frac{7}{8}$	0.8750	0.8750	0.8660	$1\frac{1}{2}$	1.312	1.285	1.516	1.465	$3\frac{5}{64}$	0.563	0.531	2.000	2.250
1	1.0000	1.0000	0.9900	1 $\frac{1}{2}$	1.500	1.469	1.732	1.675	$3\frac{9}{64}$	0.627	0.591	2.250	2.500
1 $\frac{1}{8}$	1.1250	1.1250	1.1140	1 $\frac{11}{16}$	1.688	1.631	1.949	1.859	1 $\frac{1}{6}$	0.718	0.658	2.500	2.750
1 $\frac{1}{4}$	1.2500	1.2500	1.2390	1 $\frac{7}{8}$	1.875	1.812	2.165	2.066	$2\frac{5}{32}$	0.813	0.749	2.750	3.000
1 $\frac{1}{2}$	1.5000	1.5000	1.4880	2 $\frac{1}{4}$	2.250	2.175	2.598	2.480	1 $\frac{5}{16}$	0.974	0.902	3.000	3.500

All dimensions are for informational purposes only *Tolerances +/- 5%

Stainless Steel Sealing Locknuts

Features:

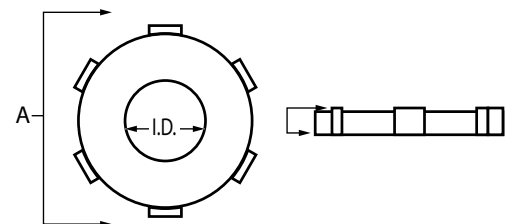
- Manufactured in type 316 stainless steel to meet any stringent sanitary condition
- Polished to a bright, easily maintainable finish that is modern, attractive, easy to clean, and that also enhances the surface's resistance to pitting and bacterial corrosion
- Heavy-duty locknut bites into the box and enclosure to prevent vibratory loosening of the connection
- Integrally fused PVC gasket provides positive seal against water, oils and other liquids
- Designed for use with rain tight, watertight, and oil tight enclosures
- NPSL – straight threads
- No package quantity required



Applications:

For use on threaded stainless rigid/IMC conduit to provide a seal against water and oil.

Part Number	Trade Size (in)	A (in)	ID (in)	Wall Thickness (in)	Weight per each (lb)
S60500LNWS	½	1.250	0.760	0.227	0.020
S60700LNWS	¾	1.450	0.975	0.260	0.030
S61000LNWS	1	1.820	1.210	0.294	0.060
S61200LNWS	1¼	2.210	1.570	0.308	0.080
S61500LNWS	1½	2.450	1.810	0.325	0.090
S62000LNWS	2	2.915	2.300	0.342	0.100



All dimensions are for informational purposes only *Tolerances +/- 5%



Stainless Steel Locknuts

Features:

- Made from type 316 stainless steel for increased corrosion resistance
- Polished with standard “brite” finish to increase corrosion resistance and aesthetic appearance
- No package quantity required

Certifications and Compliances:

- UL514B Listed
- UL File # E308159
- All locknuts are intended to be installed in accordance with ANSI/NFPA 70, National Electrical Code (NEC)

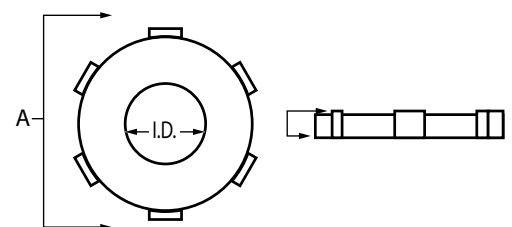
Applications:

Used to connect threaded conduit or connector to a threadless opening in a box, enclosure or fitting. Heavy stock thickness and specially designed tabs tighten securely and will not easily loosen even in the most severe applications.



Part Number	Trade Size (in)	A (in)	ID (in)	Wall Thickness (in)	Weight per each (lb)
S60500LN00	½"	1.250"	0.760"	0.138"	0.02
S60700LN00	¾"	1.450"	0.975"	0.173"	0.03
S61000LN00	1"	1.820"	1.210"	0.200"	0.06
S61200LN00	1-¼"	2.200"	1.570"	0.216"	0.07
S61500LN00	1-½"	2.450"	1.810"	0.216"	0.08
S62000LN00	2"	2.930"	2.300"	0.233"	0.10
S62500LN00	2-½"	3.560"	2.760"	0.233"	0.16
S63000LN00	3"	4.220"	3.410"	0.235"	0.20
S64000LN00	4"	5.260"	4.410"	0.236"	0.25

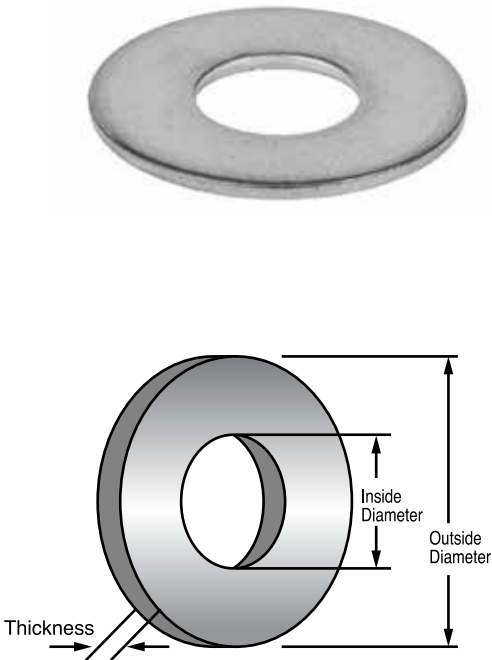
All dimensions are for informational purposes only *Tolerances +/- 5%



Stainless Steel Flat Washer

- Features:**
- Manufactured in type 316 stainless steel to meet any stringent sanitary condition
 - Polished with standard “brite” finish to increase corrosion resistance and aesthetic appearance
 - Provides excellent strength and durability to service a variety of installation requirements
 - No package quantity required

Applications:
 Calbrite’s stainless steel Flat Washers are designed to share the load, and act as a spacer, spring, shim or seat for various hardware components.



Part Number	Trade Size (in)	Outside Diameter (in)	Inside Diameter (in)	Thickness (in)	Weight per each (lb)
S60200WA00	¼	0.622	0.250	0.045	0.005
S60300WA00	⅜	0.870	0.375	0.050	0.010
S60500WA00	½	1.250	0.520	0.060	0.020
S60600WA00	⅝	1.500	0.650	0.078	0.030

All dimensions are for informational purposes only *Tolerances +/- 5%

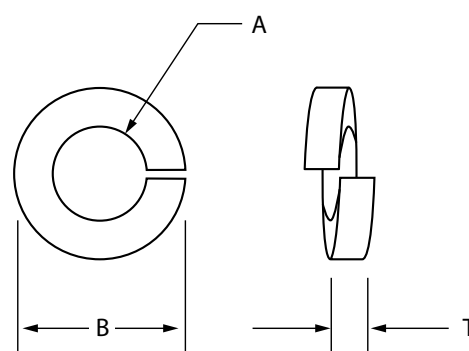
Stainless Steel Lock Washer

Features:

- Manufactured in type 316 stainless steel to meet any stringent sanitary condition
- Polished with standard “brite” finish to increase corrosion resistance and aesthetic appearance
- Provides excellent strength and durability to service a variety of installation requirements
- No package quantity required

Applications:

Calbrite’s stainless steel Lock Washers are used with nuts, bolts and screws to provide additional security and prevent loosening.



Part Number	Trade Size (in)	A (ID)	B (OD)	T Thickness (in)	Weight per each (lb)
S60200LW00	1/2	0.250	0.500	0.072	0.005
S60300LW00	3/8	0.375	0.675	0.105	0.010
S60500LW00	1/2	0.500	0.860	0.140	0.010
S60600LW00	5/8	0.625	1.050	0.158	0.020

All dimensions are for informational purposes only *Tolerances +/- 5%

Stainless Steel Grounding Locknuts

Features:

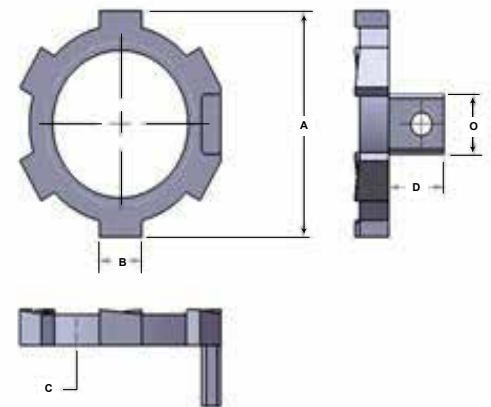
- Manufactured in type 316 stainless steel for increased corrosion resistance
- Polished with standard “brite” finish to increase corrosion resistance and aesthetic appearance
- Type 316 stainless steel grounding lug and screw included
- No package quantity required

Applications:

Used to connect threaded conduit or connector to a threadless opening in a box, enclosure, or fitting. Provides a secure connection for grounding applications. This heavy-duty grounding locknut is manufactured in type 316 stainless steel for superior strength and corrosion resistance.



Part Number	Trade Size (in)	A (in)	B (in)	C (in)	D (in)	Weight per each (lb)
S60500LNWG	½	1.250	.250	.140	.251	0.02
S60700LNWG	¾	1.610	.316	.221	.495	0.08
S61000LNWG	1	1.870	.387	.260	.500	0.10
S61200LNWG	1¼	2.280	.390	.260	.500	0.12
S61500LNWG	1½	2.570	.445	.270	.500	0.16
S62000LNWG	2	3.100	.612	.280	.505	0.22
S62500LNWG	2½	3.630	.654	.375	.625	0.36
S63000LNWG	3	4.320	.690	.375	.625	0.46
S64000LNWG	4	5.380	.765	.440	.630	0.66



All dimensions are for informational purposes only *Tolerances +/- 5%

Stainless Steel Fender Washers

Features:

- Manufactured in type 316 stainless steel to meet any stringent sanitary condition
- Polished with standard “brite” finish to increase corrosion resistance and aesthetic appearance
- Provides excellent strength and durability to service a variety of installation requirements
- No package quantity required

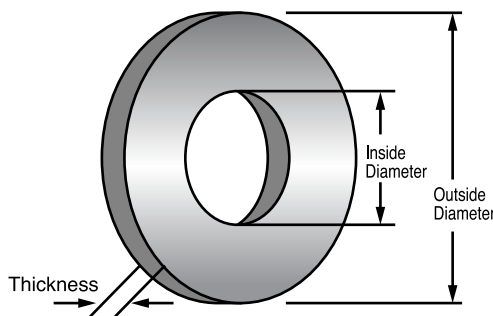
Applications:

Calbrite’s stainless steel Fender Washers are designed to share the load, and act as a spacer, spring, shim or seat for various hardware components.



Part Number	Trade Size (in)	Outside Diameter (in)	Inside Diameter (in)	Thickness (in)	Weight per each (lb)
S60200FW10	¼ x 1	1.000	0.250	0.045	0.01
S60200FW12	¼ x 1¼	1.250	0.250	0.050	0.02
S60300FW10	¾ x 1¼	1.250	0.375	0.060	0.02
S60500FW15	½ x 1½	1.500	0.500	0.060	0.03

All dimensions are for informational purposes only *Tolerances +/- 5%



Stainless Steel Square Washers

Features:

- Manufactured in type 316 stainless steel to meet any stringent sanitary condition
- Polished with standard “brite” finish to increase corrosion resistance and aesthetic appearance
- Designed for use with 1 $\frac{5}{8}$ ” stainless steel strut
- No package quantity required

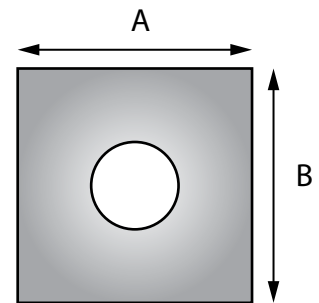


Applications:

Calbrite’s stainless steel Square Washers are designed for connecting stainless steel strut and a variety of stainless steel accessories.

Part Number	Trade Size (in)	A Width (in)	B Length (in)	Inside Diameter (in)	Thickness (in)	Weight per each (lb)
S60200SW00	1/4	1.600	1.600	0.250	0.250	0.170
S60300SW00	3/8	1.600	1.600	0.375	0.250	0.160
S60500SW00	1/2	1.600	1.600	0.500	0.250	0.150
S60600SW00	5/8	1.600	1.600	0.625	0.250	0.140

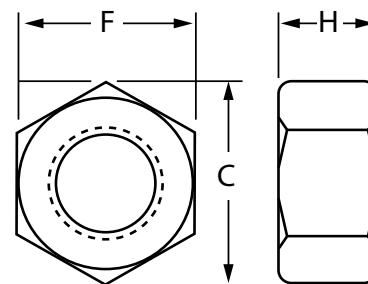
All dimensions are for informational purposes only *Tolerances +/- 5%



Stainless Steel Hex Nuts



Part Number	Trade Size (in)	C (in)	F (in)	H (in)	F (in)	Weight per each (lb)
S60200HN00	1/4	0.500	0.420	0.220	0.250	0.01
S60300HN00	3/8	0.625	0.550	0.330	0.375	0.01
S60500HN00	1/2	0.850	0.750	0.430	0.500	0.03
S60600HN00	5/8	1.050	0.900	0.550	0.625	0.07



All dimensions are for informational purposes only *Tolerances +/- 5%

Stainless Steel Slotted Machine Screws

Part Number	Trade Size (in)
S60200MS10	1/4" X 1"
S60200MS12	1/4" X 1-1/4"
S60200MS15	1/4" X 1-1/2"
S60300MS07	3/8" X 3/4"
S60300MS10	3/8" X 1"
S60500MS10	1/2" X 1"



All dimensions are for informational purposes only *Tolerances +/- 5%

Notes



Allied Tube & Conduit ▴ AFC Cable Systems ▴ Heritage Plastics ▴ Unistrut
Unistrut Construction ▴ Cope ▴ US Tray ▴ Calbrite ▴ Calbond ▴ Kaf-Tech
Columbia-MBF ▴ Eastern Wire + Conduit ▴ ACS/Uni-Fab ▴ Cii
Power-Strut ▴ Calconduit ▴ Razor Ribbon ▴ Calpipe Security
FRE Composites ▴ Vergokan ▴ Flexicon ▴ Marco

Atkore
6451 Northwind Pkwy
Hobart, IN 46342

TOLL FREE / 800-536-2248
FAX / 219-844-6884

atkore.com/calbrite

Want to join a company that helps you build
the mindset, skill set and tool set for success?
Visit us at atkore.com/careers