

600 VAC

Applications:

AFU mine signal switches are used:

- For signalling circuits or remote control of magnetic motor starters
- In non-hazardous areas of mines or process industry facilities where a rugged enclosure is needed for protection from falling ore and other material or dripping water
- Mounted on walls or in shaft ways and actuated by pulling line or cable attached to the loop at the bottom

Features:

- Sturdy raintight enclosure with heavy mounting lugs
- Wires enter enclosure through clearance holes in the underside
- Switches are actuated by a spring-loaded plunger which returns to the normal position when the operating force is removed
- Units are furnished with heavy duty motor control pushbuttons; several of these may be interconnected electrically for remote control of a magnetic motor starter from more than one location

Certifications and compliances:

- NEMA 3

Standard materials:

- Enclosure – Feraloy iron alloy
- Plunger – steel
- Loop – bronze

Standard finishes:

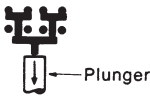
- Feraloy – electrogalvanized and aluminum acrylic paint
- Steel – electrogalvanized
- Bronze – natural



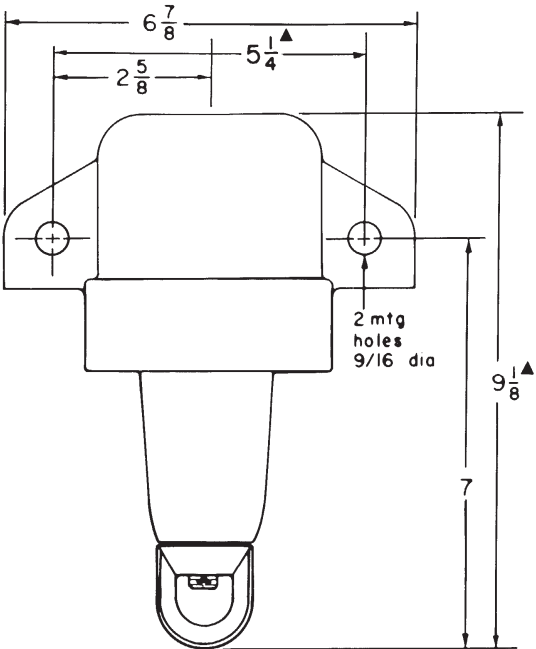
AFU mine signal switch with pushbutton switch (cover removed)

Ordering information:

Maximum weight of line or cable without actuating switch (lbs.)	Total operating force required (lbs.)	Cat. # With pushbutton heavy duty 600 VAC max.
25	50	AFU254
15	25	AFU154



Dimensions^A (in inches):



^A Dimensions are approximate, not for construction purposes.

Applications:

- AFC mine signal switches are used:
- For remote control of signaling circuits
 - In non-hazardous areas of mines or process industry facilities where a rugged enclosure is needed for protection from falling ore and other material or dripping water
 - Mounted on walls or in shaftways and actuated by pulling line or cable attached to the loop at the bottom

Features:

- Mounting lugs for 1/2" bolts or lag screws
- Single-pole normally open double break switch contacts
- Switch is actuated by a spring-loaded plunger which returns to the normal position when the operating force is removed
- Standard pull spring on switch unit is 10 pounds
- Terminal block with heavy wire terminals is mounted in the box and readily accessible for ease of wiring
- Housing has 3/4" NPT through feed conduit hubs
- Intended for use with separate howlers, bells, horns or other signaling devices
- Heavy cast water shedding enclosure

Certifications and compliances:

- Evaluated to SPE 1000 (CEC)

Standard materials:

- Enclosure – Feraloy iron alloy
- Cover – sheet steel
- Plunger – steel
- Loop – bronze

Standard finishes:

- Feraloy iron alloy – electrogalvanized and aluminum acrylic paint
- Steel – electrogalvanized
- Bronze – natural

Electrical ratings:

- Control circuit switch – 15A, 125 VAC max.

Options:

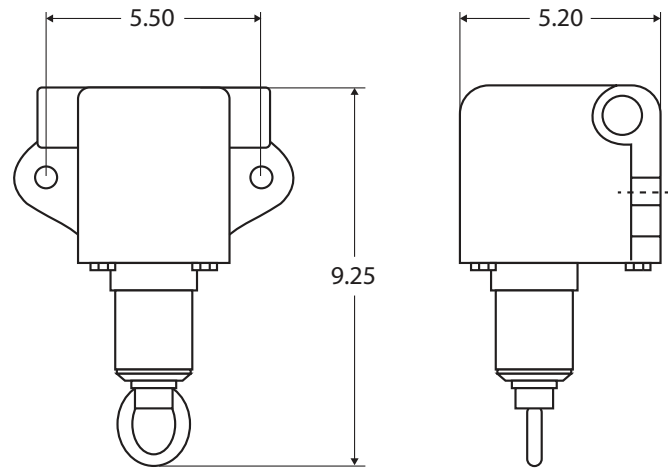
Description	Suffix
• Corro-free external epoxy powder coat.....	S752



Ordering information:

Maximum weight of line or cable without actuating switch (lbs.)	Total operating force required (lbs.)	Cat. #
7	10	AFC210
10	15	AFC215
25	50	AFC250
75	100	AFC2100

Dimensions^a (in inches):



^a Dimensions are approximate, not for construction purposes.

Applications:

AFS mine signal switches are used:

- For remote control of signaling circuits
- In non-hazardous areas of mines or process industry facilities where a rugged enclosure is needed for protection from falling ore and other material or dripping water
- Mounted on walls or in shaftways and actuated by pulling line or cable attached to the loop at the bottom

Features:

- Water shedding cover
- Mounting lugs for 1/2" bolts or lag screws
- Single-pole normally open double break switch contacts
- Switch is actuated by a spring-loaded plunger which returns to the normal position when the operating force is removed
- Standard pull spring on switch unit is 10 pounds
- Terminal block with heavy wire terminals is mounted in the box and readily accessible for ease of wiring
- Housing has 3/4" NPT conduit hub on the bottom and slide-on steel, water shedding cover for convenient access
- No tools required, no screws to remove, no wiring to disturb for inspection or switch replacement

Certifications and compliances:

- Evaluated to SPE 1000 (CEC)

Standard materials:

- Enclosure – Feraloy iron alloy
- Cover – sheet steel
- Plunger – steel
- Loop – bronze

Standard finishes:

- Feraloy iron alloy – electrogalvanized and aluminum acrylic paint
- Steel – electrogalvanized
- Bronze – natural

Electrical ratings:

- Control circuit switch – 15A, 125 VAC max.

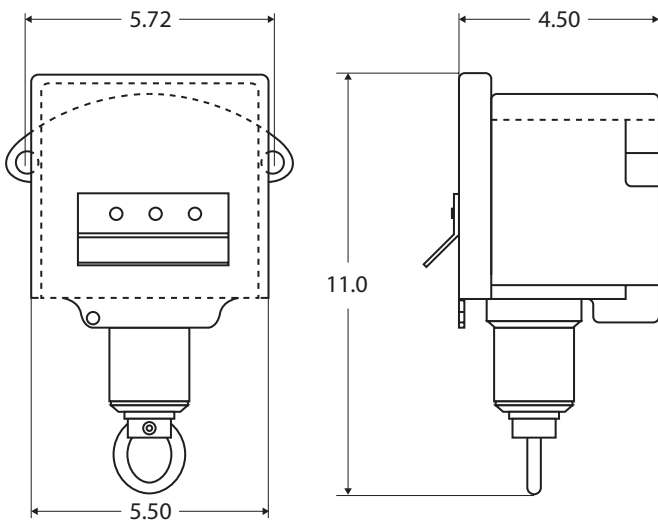
Options:

Description	Suffix
• Corro-free external epoxy powder coat.....	S752

Ordering information:

Maximum weight of line or cable without actuating switch (lbs.)	Total operating force required (lbs.)	Cat. #
7	10	AFS210-CD
10	15	AFS215-CD
25	50	AFS250-CD
75	100	AFS2100-CD

Dimensions^a (in inches):



5C

^a Dimensions are approximate, not for construction purposes.

Applications:

- AFM mine signal switches are used:
- For audible signaling and remote signaling
 - In non-hazardous areas of mines or process industry facilities where a rugged enclosure is needed for protection from falling ore and other material or dripping water
 - Mounted on walls or in shaftways and actuated by pulling line or cable attached to the loop at the bottom

Features:

- Sheet steel water shedding cover
- Mounting lugs for 1/2" bolts or lag screws
- Single-pole normally open double break switch contacts
- Switch is actuated by a spring-loaded plunger which returns to the normal position when the operating force is removed
- Standard pull spring on switch unit is 10 pounds
- Buzzer provides audible signal
- Terminal block with heavy wire terminals is mounted in the box for ease of wiring
- Housing has 3/4" conduit hub on the bottom and slide-on steel, water shedding cover for convenient access
- No tools required, no screws to remove, no wiring to disturb for inspection or replacement of internal units
- 10 watt continuous duty resistor mounted in panel to keep interior dry

Certifications and compliances:

- Evaluated to SPE 1000 (CEC)

Standard materials:

- Enclosure – Feraloy iron alloy
- Cover – sheet steel
- Plunger – steel
- Loop – bronze

Standard finishes:

- Feraloy iron alloy – electrogalvanized and aluminum acrylic paint
- Steel – electrogalvanized
- Bronze – natural

Electrical ratings:

- Control circuit switch – 15A, 125 VAC max.

Options:

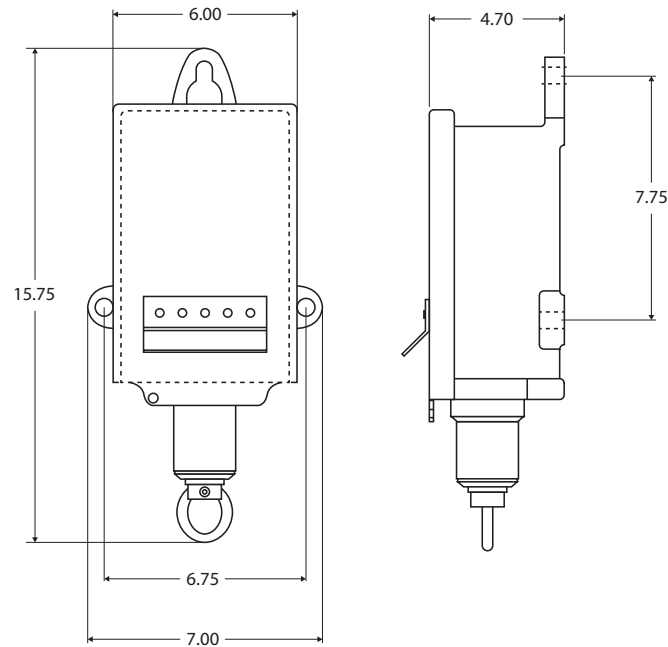
Description	Suffix
• Corro-free external epoxy powder coat.....	S752



Ordering information:

Maximum weight of line or cable without actuating switch (lbs.)	Total operating force required (lbs.)	Cat. #
7	10	AFM211060
10	15	AFM2110605
25	50	AFM21106050
75	100	AFM211060100

Dimensions^a (in inches):



^a Dimensions are approximate, not for construction purposes.

Applications:

- AFK mine signal switches are used:
- For visible, audible and remote control of signaling circuits
 - In non-hazardous areas of mines or process industry facilities where a rugged enclosure is needed for protection from falling ore and other material or dripping water
 - Mounted on walls or in shaftways and actuated by pulling line or cable attached to the loop at the bottom

Features:

- Water shedding cover
- Mounting lugs for 1/2" bolts or lag screws
- Single-pole normally open double break switch contacts
- Switch is actuated by a spring-loaded plunger which returns to the normal position when the operating force is removed
- Standard pull spring on switch unit is 10 pounds
- Visible signal observable from the front and both sides through port holes
- Buzzer provides audible signal
- Terminal block with heavy wire terminals is mounted in the housing and readily accessible for ease of wiring
- Housing has 3/4" conduit hub on the bottom and slide-on steel, water shedding cover for convenient access
- No tools required, no screws to remove, no wiring to disturb for inspection or replacement of internal units
- 10 watt continuous duty resistor mounted in panel to keep interior dry

Certifications and compliances:

- Evaluated to SPE 1000 (CEC)

Standard materials:

- Enclosure – Feraloy iron alloy
- Cover – sheet steel
- Plunger – steel
- Loop – bronze

Standard finishes:

- Feraloy iron alloy – electrogalvanized and aluminum acrylic paint
- Steel – electrogalvanized
- Bronze – natural

Electrical ratings:

- Control circuit switch – 15A, 125 VAC max.

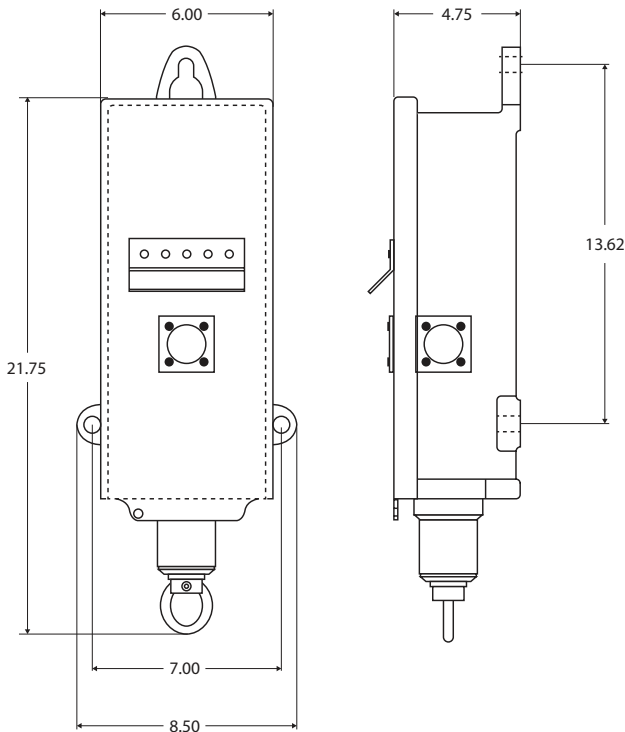
Options:

Description	Suffix
• Corro-free external epoxy powder coat.....	S752

Ordering information:

Maximum weight of line or cable without actuating switch (lbs.)	Total operating force required (lbs.)	Cat. #
7	10	AFK211060
10	15	AFK2110605
25	50	AFK21106050
75	100	AFK211060100

Dimensions^A (in inches):



^A Dimensions are approximate, not for construction purposes.

