

EIH instrument enclosures

Cl. I, Div. 1 & 2, Groups B^A, C, D
 Cl. II, Div. 1, Groups E, F, G
 Cl. II, Div. 2, Groups F, G
 Cl. III
 NEMA 3, 4, 4X, 7B^ACD, 9EFG
 Ex d IIB, IP66 ATEX certified

Explosionproof
 Dust-ignitionproof
 Raintight
 Wet locations
 Watertight

1E

Applications:

EIH instrument enclosures are used:

- To enclose instrumentation and control devices, such as two-wire transmitters, flow measurement devices, temperature controls, level detectors, pressure switches, etc.
- As an outlet box for pulling and splicing conductors
- In hazardous, abusive and wet locations
- To provide access to conductors for maintenance and future system changes

Features:

- $\frac{3}{4}$ " offset through feed hubs offer maximum interior space and greater working area
- 2" and 4" deep covers, solid or with glass lens
- Internal mounting pads for instrument mounting
- Internal ground screw for safe, continuous grounding
- Neoprene gasket provides a watertight seal for NEMA/EEMAC 4 and UL/CSA Type 4 applications
- Wrenching lugs permit easy cover removal and tightening
- Internal cover threads provide additional space inside body
- External boss is suitable for drilling and tapping an additional conduit entry

Certifications and compliances:

NEC/CEC:

- Class I, Divisions 1 & 2, Groups B^A, C, D
- Class II, Division 1, Groups E, F, G
- Class II, Division 2, Groups F, G
- Class III

UL standard:

- UL1203

CSA standard:

- C22.2 No. 30

IEC/ATEX standards:

- EN:60079-0, EN:60079-1, EN:60529
- ATEX certificate: KEMA 02 ATEX 2265U (with ATEX suffix)

FM classification:

- No. 3615

Environmental ratings:

- NEMA/EEMAC 3, 4, 4X, 7B^ACD, 9EFG

Standard materials:

- Body and cover – copper-free aluminum
- Glass lens – heat tempered glass
- Gasket – neoprene

Standard finish:

- Corro-free epoxy powder coat (gray)



EIH22



EIH20

Options:

Description

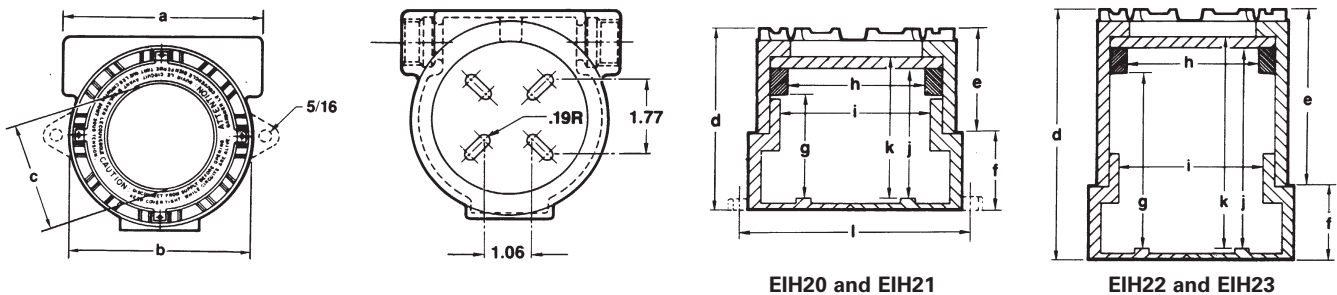
- Cast mounting feet..... **MF**
 - ATEX certification **ATEX**
 - Natural finish..... **Contact factory**
- Additional drilled and tapped opening in external boss:**
- $\frac{1}{2}$ " **1**
 - $\frac{3}{4}$ " **2**

Suffix

Ordering information:

Hub size ^B	Description	Cat. #
$\frac{3}{4}$ "	Body with 2" standard cover	EIH20
$\frac{3}{4}$ "	Body with 2" glass lens cover	EIH21
$\frac{3}{4}$ "	Body with 4" dome cover	EIH22
$\frac{3}{4}$ "	Body with 4" glass lens dome cover	EIH23

Dimensions^C (in inches):



Cat. #	a	b	c	d	e	f	g	h	i	j	k	l
EIH20	5.00	4.25	—	4.54	2.60	1.94	—	—	3.62	—	3.34	5.25
EIH21	5.00	4.25	2.60	4.54	2.60	1.94	2.75	2.61	3.62	3.10	—	5.25
EIH22	5.00	4.25	—	6.54	4.60	1.94	—	—	3.62	—	5.34	5.25
EIH23	5.00	4.25	2.60	6.54	4.60	1.94	4.68	2.61	3.62	5.03	—	5.25

^AFor Group B applications, seal within $\frac{1}{4}$ " of enclosure in accordance with Section 501-5 of the National Electrical Code as well as any other applicable codes.

^BFor $\frac{1}{2}$ " hub size, use RE21-SA.

^CDimensions are approximate, not for construction purposes.

Applications:

EIHT instrument enclosures are used:

- To enclose instrumentation and control devices, such as two-wire transmitters, flow measurement devices, temperature controls, level detectors, pressure switches, etc.
- As an outlet box for pulling and splicing conductors
- In hazardous, abusive and wet locations
- To provide access to conductors for maintenance and future system changes

Features:

- $\frac{3}{4}$ " offset through feed hubs offer maximum interior space and greater working area
- 2" and 4" deep covers, solid or with glass lens
- Internal mounting pads for instrument mounting
- Internal ground screw for safe, continuous grounding
- Neoprene gasket provides a watertight seal for NEMA/EEMAC 4 and UL/CSA Type 4 applications
- Wrenching lugs permit easy cover removal and tightening
- Internal cover threads provide additional space inside body
- External boss is suitable for drilling and tapping an additional conduit entry
- Two separate chambers for isolation of power supply and instrument
- $\frac{3}{4}$ " hub on instrument side
- Third party certified for drilling enclosure wall between instrument and power side

Certifications and compliances:

NEC/CEC:

- Class I, Divisions 1 & 2, Groups B^A, C, D
- Class II, Division 1, Groups E, F, G
- Class II, Division 2, Groups F, G
- Class III

UL standard:

- UL1203

CSA standard:

- C22.2 No. 30

IEC standards:

- EN:60079-0, EN:60079-1, EN:60529

FM classification:

- No. 3615

Environmental ratings:

- NEMA/EEMAC 3, 4, 7B^ACD, 9EFG

Standard materials:

- Body and cover – copper-free aluminum
- Glass lens – heat tempered glass
- Gasket – neoprene

Standard finish:

- Corro-free epoxy powder coat (gray)

Options:

Description Suffix

- Natural finish..... **Contact factory**

Additional drilled and tapped opening in external boss:

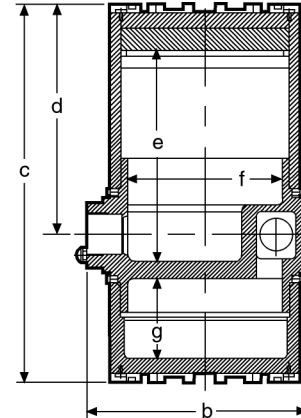
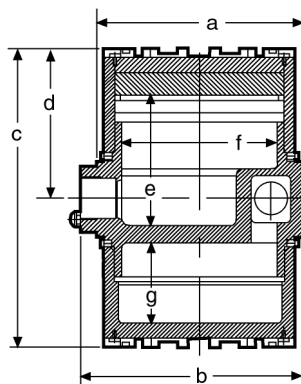
- $\frac{1}{2}$ " 1
- $\frac{3}{4}$ " 2



Ordering information:

Hub size ^B	Description	Cat. #
$\frac{3}{4}$ "	2" blank cover - power side; 2" blank cover - instrument side	EIHT200
$\frac{3}{4}$ "	2" blank cover - power side; 2" glass lens cover - instrument side	EIHT210
$\frac{3}{4}$ "	2" blank cover - power side; 4" blank cover - instrument side	EIHT220
$\frac{3}{4}$ "	2" blank cover - power side; 4" glass lens cover - instrument side	EIHT230

Dimensions (in inches):



Cat. #	a	b	c	d	e	f	g
EIHT200	4.75	5.19	6.95	3.48	3.15	3.56	1.87
EIHT210	4.75	5.19	6.95	3.48	3.15	3.56	1.87
EIHT220	—	5.19	8.95	5.48	5.15	3.56	1.87
EIHT230	—	5.19	8.95	5.48	5.15	3.56	1.87

^AFor Group B applications, seal within $\frac{1}{16}$ " of enclosure in accordance with Section 501-5 of the National Electrical Code as well as any other applicable codes.

^BFor $\frac{1}{4}$ " hub size, use RE21-SA.