

# Condulet FS and FD multi-gang device boxes – cast iron or aluminum

With and without mounting lugs for threaded rigid and IMC conduit

See pages 39-47 for accessories

2F  
2F

## Ordering information:

### FS two-gang tandem<sup>A</sup>



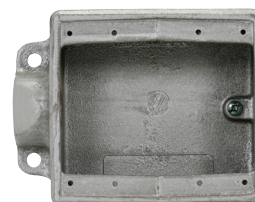
Hub size	Cat. #
1/2"	FS17
3/4"	FS27

### FSC two-gang tandem<sup>A</sup>



Hub size	Cat. #
1/2"	FSC17
3/4"	FSC27

### FSE two-gang



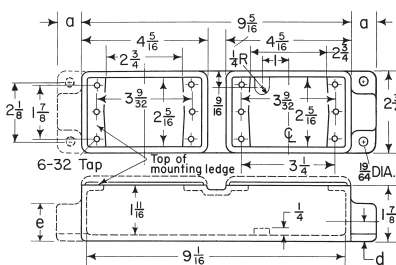
Hub size	Cat. #
3/4"	FSE22

### FS/FD two-gang

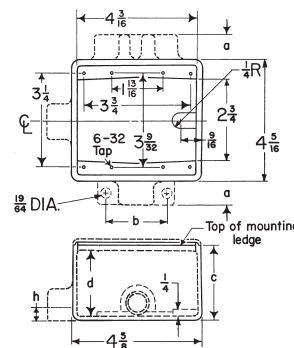


Hub size	Cat. #	Cat. #
1/2"	FS12 <sup>B</sup>	FD12
3/4"	FS22 <sup>B</sup>	FD22 <sup>B</sup>
1"	FS32	FD32

## Dimensions (in inches):



Two-gang tandem



Two-gang

### FSC/FDC two-gang



Hub size	Cat. #	Cat. #
1/2"	FSC12	FDC12
3/4"	FSC222	FDC222 <sup>B</sup>
1"	FSC32	FDC32

## Two-gang tandem

Series	Hub size	a	d	e
FS	1/2"	7/8	5/8	1 1/4
	3/4"	7/8	3/4	1 1/2

## Two-gang

Series	Hub size	a	b	c	d	h
FS	1/2"	7/8	2 1/4	1 7/8	1 11/16	5/8
	3/4"	7/8	2 1/4	1 7/8	1 11/16	3/4
	1"	1	2 1/2	1 7/8	1 11/16	7/8
FD	1/2"	7/8	2 1/4	2 11/16	2 1/2	5/8
	3/4"	7/8	2 1/4	2 11/16	2 1/2	3/4
	1"	1	2 1/2	2 11/16	2 1/2	7/8

<sup>A</sup> Use single-gang covers only.

<sup>B</sup> Available in copper-free aluminum. To order, add suffix 'SA' to end of catalog number.

