

GUB equipment housings

Cl. I, Div. 1 & 2, Groups B, C, D
 Cl. II, Div. 1, Groups E, F, G
 Cl. II, Div. 2, Groups F, G
 Cl. III
 NEMA 4, 7B, CD, 9EFG

Explosionproof
 Dust-ignitionproof
 Raintight
 Wet locations
 Watertight

1E

Applications:

GUB equipment housings are used in threaded rigid conduit systems in hazardous areas:

- To house relays, contactors, terminal blocks or other equipment and devices
- Indoors or outdoors

Features:

- Supplied with dome cover and adjustable mounting position plate which extends into dome cover
- Mounting plate is adjustable; it may be located in center of cover so small devices can be mounted on both sides of plate or toward either side of dome cover when larger devices are mounted on one side of plate (see dimension "P")

Certifications and compliances:

NEC:

GUB3177

- Class I, Divisions 1 & 2, Group D
- Class II, Division 1, Groups E, F, G
- Class II, Division 2, Groups F, G
- Class III

GUB1440, GUB1100

- Class I, Divisions 1 & 2, Groups B, C, D
- Class II, Division 1, Groups E, F, G
- Class II, Division 2, Groups F, G
- Class III

UL standard:

- UL1203

CSA standard:

- C22.2 No. 30

Standard materials:

- Bodies – Feraloy iron alloy
- Covers – copper-free aluminum
- Mounting plates – sheet steel

Standard finishes:

- Feraloy iron alloy – electrogalvanized and aluminum acrylic paint
- Copper-free aluminum – natural
- Sheet steel – zinc plated

Options:

Description

Suffix

- Copper-free aluminum bodies **SA**
- Other sizes of boxes and covers **Available upon request**



GUB with cover removed showing mounting plate



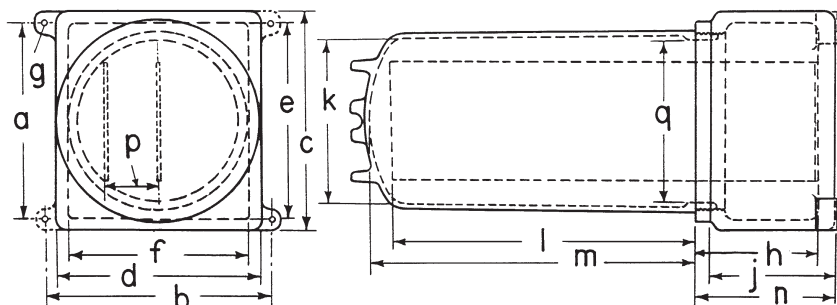
GUB with dome cover

Ordering information:

Body size	Nominal depth of cover	Dimension		Width of mounting plate	Cat. #
		l	m		
GUB01	4	3 ⁵ / ₁₆	4	3 ¹³ / ₁₆	GUB1440
	10	9 ¹³ / ₁₆	10 ⁷ / ₁₆		GUB1100
GUB03	17	16 ⁷ / ₈	17 ³ / ₈	6 ¹ / ₂	GUB3177

Conduit seals are required within 1/2" of all conduit entrances for Class I, Division 1, Group B hazardous areas. For other sealing requirements, consult the National Electrical Code/Canadian Electrical Code.

Dimensions (in inches):



Dotted mounting feet are on GUB 03 only

Body size	GUB01	GUB03
a	5 ³ / ₄	10 ³ / ₄
b	7 ¹ / ₂	12 ¹ / ₈
c	7	12
d	6 ¹ / ₂	11
e	6 ¹ / ₂	10 ³ / ₄
f	5 ⁵ / ₈	9 ³ / ₄
g	1 ¹³ / ₃₂	7 ¹ / ₁₆
h	4 ² / ₁₆	6 ⁵ / ₈
j	4	6 ⁵ / ₈
k	5	9 ¹ / ₈
l	See listing	
m	See listing	
n	4 ¹ / ₈	7 ⁵ / ₈
p	1 ¹ / ₂ max.	2 ¹ / ₈ max.
q	5 ¹ / ₈	8 ¹ / ₈

Ⓐ Check certifications and compliances for specific hazardous area ratings for each catalog number. For conduit liner ordering information, see Section 6E.