

# GUB equipment housings

Cl. I, Div. 1 & 2, Groups B, C, D  
 Cl. II, Div. 1, Groups E, F, G  
 Cl. II, Div. 2, Groups F, G  
 Cl. III  
 NEMA 4, 7B, CD, 9EFG

Explosionproof  
 Dust-ignitionproof  
 Raintight  
 Wet locations  
 Watertight

1E

## Applications:

GUB equipment housings are used in threaded rigid conduit systems in hazardous areas:

- To house relays, contactors, terminal blocks or other equipment and devices
- Indoors or outdoors

## Features:

- Supplied with dome cover and adjustable mounting position plate which extends into dome cover
- Mounting plate is adjustable; it may be located in center of cover so small devices can be mounted on both sides of plate or toward either side of dome cover when larger devices are mounted on one side of plate (see dimension "P")

## Certifications and compliances:

### NEC:

#### GUB3177

- Class I, Divisions 1 & 2, Group D
- Class II, Division 1, Groups E, F, G
- Class II, Division 2, Groups F, G
- Class III

#### GUB1440, GUB1100

- Class I, Divisions 1 & 2, Groups B, C, D
- Class II, Division 1, Groups E, F, G
- Class II, Division 2, Groups F, G
- Class III

### UL standard:

- UL1203

### CSA standard:

- C22.2 No. 30

## Standard materials:

- Bodies – Feraloy iron alloy
- Covers – copper-free aluminum
- Mounting plates – sheet steel

## Standard finishes:

- Feraloy iron alloy – electrogalvanized and aluminum acrylic paint
- Copper-free aluminum – natural
- Sheet steel – zinc plated

## Options:

### Description

### Suffix

- Copper-free aluminum bodies ..... **SA**
- Other sizes of boxes and covers ..... **Available upon request**



GUB with cover removed showing mounting plate



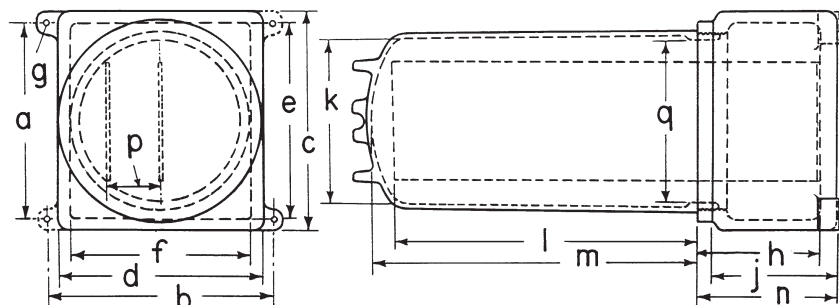
GUB with dome cover

## Ordering information:

Body size	Nominal depth of cover	Dimension		Width of mounting plate	Cat. #
		l	m		
GUB01	4	3 <sup>5</sup> / <sub>16</sub>	4	3 <sup>13</sup> / <sub>16</sub>	GUB1440
	10	9 <sup>13</sup> / <sub>16</sub>	10 <sup>7</sup> / <sub>16</sub>		GUB1100
GUB03	17	16 <sup>7</sup> / <sub>8</sub>	17 <sup>3</sup> / <sub>8</sub>	6 <sup>1</sup> / <sub>2</sub>	GUB3177

Conduit seals are required within 1/2" of all conduit entrances for Class I, Division 1, Group B hazardous areas. For other sealing requirements, consult the National Electrical Code/Canadian Electrical Code.

## Dimensions (in inches):



Dotted mounting feet are on GUB 03 only

Body size	GUB01	GUB03
a	5 <sup>3</sup> / <sub>4</sub>	10 <sup>3</sup> / <sub>4</sub>
b	7 <sup>1</sup> / <sub>2</sub>	12 <sup>1</sup> / <sub>8</sub>
c	7	12
d	6 <sup>1</sup> / <sub>2</sub>	11
e	6 <sup>1</sup> / <sub>2</sub>	10 <sup>3</sup> / <sub>4</sub>
f	5 <sup>5</sup> / <sub>8</sub>	9 <sup>3</sup> / <sub>4</sub>
g	1 <sup>13</sup> / <sub>32</sub>	7 <sup>1</sup> / <sub>16</sub>
h	4 <sup>2</sup> / <sub>16</sub>	6 <sup>5</sup> / <sub>8</sub>
j	4	6 <sup>5</sup> / <sub>8</sub>
k	5	9 <sup>1</sup> / <sub>8</sub>
l	See listing	
m	See listing	
n	4 <sup>1</sup> / <sub>8</sub>	7 <sup>5</sup> / <sub>8</sub>
p	1 <sup>1</sup> / <sub>2</sub> max.	2 <sup>1</sup> / <sub>8</sub> max.
q	5 <sup>1</sup> / <sub>8</sub>	8 <sup>1</sup> / <sub>8</sub>

Ⓐ Check certifications and compliances for specific hazardous area ratings for each catalog number.

For conduit liner ordering information, see page 860.