

GUSC circuit breaker load centers

With Quicklag® circuit breakers

Cl. I, Div. 1 & 2, Groups B^A, C, D
Cl. II, Div. 1, Groups E^B, F, G
Cl. II, Div. 2, Groups F, G
Cl. III

Explosionproof
Dust-ignitionproof
Raintight
Wet locations

1A

Applications:

GUSC circuit breaker load centers are used in:

- Areas which are hazardous due to the presence of flammable vapors, gases or highly combustible dusts, and which are subject to weather, dampness and corrosion
- Indoors or outdoors at petroleum refineries, chemical and petrochemical plants and other process industry facilities where similar hazards exist

Features:

- Compact rectangular enclosures with round threaded covers
- External operating handles can be padlocked in either "ON" or "OFF" position
- Not furnished with internal wiring as field wiring connections are made directly to circuit breaker line and load terminals; to meet varying grounding requirements, an insulated neutral terminal block is provided and is equipped with a removable grounding jumper
- Bodies have 1" vertical through feed hubs

Certifications and compliances:

NEC/CEC:

- Class I, Divisions 1 & 2, Groups B^A, C, D
- Class II, Division 1, Groups E^B, F, G
- Class II, Division 2, Groups F, G
- Class III

UL standard:

- UL1203

Environmental ratings:

- NEMA 3, 7BCD, 9EFG, 12

Standard materials:

- Body – Feraloy® iron alloy
- Covers and operating handles – copper-free aluminum
- Operating shafts – stainless steel
- Interior parts – sheet steel

Standard finishes:

- Feraloy iron alloy – electrogalvanized and aluminum acrylic paint
- Copper-free aluminum – natural
- Stainless steel – natural
- Sheet steel – electrogalvanized with chromate finish

Size ranges:

Maximum number of breakers

Single-pole	Two-pole
2	1

Electrical ratings:

- Quicklag circuit breakers: single-pole – 240 VAC max.; two-pole – 240 VAC max.
- Trip ratings: 10, 15, 20, 30 and 40 amperes

Options:

Description

Suffix

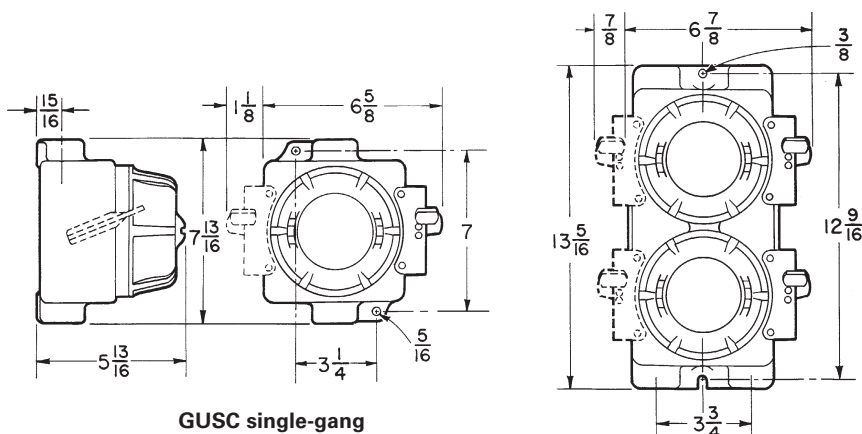
- Breather and drain (Class I and Class II) **S198V**
- Breather and drain (Class I and Class II, Groups F, G)..... **S454V**
- Assortment of single- and two-pole circuit breakers and trip ratings **Specify**

Ordering information:

Circuit breaker information			Load center with circuit breaker		
No. of breakers	No. of poles	Amperage rating	Hub size	Cat. # Standard unit	Cat. # Group B unit
1	1	10	1"	GUSC3110 10	GUSC3110 10 GB
		15	1"	GUSC3110 15	GUSC3110 15 GB
		20	1"	GUSC3110 20	GUSC3110 20 GB
		30	1"	GUSC3110 30	GUSC3110 30 GB
		40	1"	GUSC3110 40	GUSC3110 40 GB
2	1	10	1"	GUSC3210 10	GUSC3210 10 GB
		15	1"	GUSC3210 15	GUSC3210 15 GB
		20	1"	GUSC3210 20	GUSC3210 20 GB
		30	1"	GUSC3210 30	GUSC3210 30 GB
		40	1"	GUSC3210 40	GUSC3210 40 GB
1	2	10	1"	GUSC3120 10	GUSC3120 10 GB
		15	1"	GUSC3120 15	GUSC3120 15 GB
		20	1"	GUSC3120 20	GUSC3120 20 GB
		30	1"	GUSC3120 30	GUSC3120 30 GB
		40	1"	GUSC3120 40	GUSC3120 40 GB



Dimensions^A (in inches):



GUSC single-gang

^A See listings for catalog numbers which are suitable for use in Group B hazardous locations. Seals must be installed within 1/2" of all conduit openings.

^B Standard product is suitable for Class II, Divisions 1 & 2, Groups F, G. For Class II, Division 1, Groups E, F, G, order with suffix S756V.

^C Dimensions are approximate, not for construction purposes.

Quicklag is a registered trademark of Cutler-Hammer Inc.