

Steel octagon boxes & ceiling pans

3 1/4" ROUND CEILING PANS – 4.0 CUBIC INCH CAPACITY

1/2" DEEP

CLAMPS IN BOTTOM

UL LISTED



TP266

Cat. #	Knockouts		Fan rated (weight lbs.)	Fixture rated (weight lbs.)	Unit qty.	Wt. lbs. per 100
	Cable	Conduit				
TP266	4 - cable	1 - 1/2"	No	50	50	30

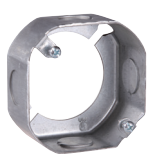
3 1/2" OCTAGON OUTLET BOXES

1 1/2" DEEP

UL LISTED



TP256



TP258



TP259



TP260



TP264

Cat. #	Description	Cubic inches	Knockouts		Fan rated (weight lbs.)	Fixture rated (weight lbs.)	Unit qty.	Wt. lbs. per 100
			Sides	Bottom				
For conduit – no clamps								
TP256	-	11.5	4 - 1/2"	1 - 1/2"	No	50	50	41
TP258	Extension ring	9.0	4 - 1/2"	-	No	50	50	31
For non-metallic cable with clamps								
TP259	"S" bracket, set 1/2"	9.0	4 - cable, 1 - 1/2"	1 - 1/2"	No	50	50	53
TP260	-	11.5	4 - cable, 2 - 1/2"	1 - 1/2"	No	50	50	44
TP264	Two screw ears	9.0	4 - cable, 2 - 1/2"	1 - 1/2"	No	50	50	47

3 1/2" ROUND CEILING COVERS

UL LISTED



TP270



TP272

Cat. #	Knockouts		Unit qty.	Wt. lbs. per 100
	Cable	Conduit		
TP270	Flat blank		100	18
TP272	Flat, 1/2" KO in center		100	18

Steel octagon boxes & ceiling pans

4" ROUND CEILING PANS

UL LISTED



TP261



TP267



TP269



TP301

Cat. #	Description	Depth	Cubic inches	Knockouts		Fan rated (weight lbs.)	Fixture rated (weight lbs.)	Unit qty.	Wt. lbs. per 100
				Sides	Bottom				
TP261	External clamp and mounting screws (polybagged)	5/8"	8.0	-	2 - 1/2"	35	50	20	50
TP267	KOs and clamps	1/2"	6.0	-	4 - cable, 3 - 1/2"	No	50	50	39
TP269	KOs only	1/2"	6.0	-	5 - 1/2"	No	50	50	35
TP269G ^F	KOs Only	1/2"	6.0	-	5 - 1/2"	No	50	50	35
TP301 ^G	NM snap-in connector, mtg. screws, protective cover	1/2"	6.0	-	3 - 1/2"	70	90	20	51

^F CSA certified. G indicates ground screw installed.
^G TP301 fan is supported independent of outlet box.

4" OCTAGON OUTLET BOXES – 15.5 CUBIC INCH CAPACITY

1 1/2" DEEP
FOR CONDUIT – NO CLAMPS

UL LISTED



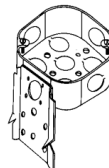
TP274, TP278,
TP834G



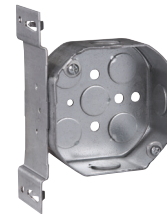
TP276



TP273



TP280



TP282



TP284, TP286

Cat. #	Description	Knockouts		Fan rated (weight lbs.)	Fixture rated (weight lbs.)	Unit qty.	Wt. lbs. per 100
		Sides	Bottom				
TP274	-	4 - 1/2"	5 - 1/2"	No	50	50	50
TP274G ^F	-	4 - 1/2"	5 - 1/2"	No	50	50	50
TP274RED ^G	-	4 - 1/2"	5 - 1/2"	No	50	50	50
TP273	Blank bottom	4 - 1/2"	-	No	50	50	51
TP276	-	4 - 3/4"	3 - 1/2", 2 - 3/4"	No	50	50	50
TP276G ^F	-	4 - 3/4"	3 - 1/2", 2 - 3/4"	No	50	50	50
TP278	-	2 - 1/2", 2 - 3/4"	3 - 1/2", 2 - 3/4"	No	50	50	50
TP278G ^F	-	2 - 1/2", 2 - 3/4"	3 - 1/2", 2 - 3/4"	No	50	50	50
TP280	"C" bracket	4 - 1/2"	5 - 1/2"	No	50	50	60
TP280G ^F	"C" bracket	4 - 1/2"	5 - 1/2"	No	50	50	60
TP282	"S" bracket, set 1/2"	3 - 1/2"	5 - 1/2"	No	50	50	58
TP282G ^F	"S" bracket, set 1/2"	3 - 1/2"	5 - 1/2"	No	50	50	58
Air plenum							
TP834 ^B	For air plenum	4 - 1/2"	5 - 1/2"	No	50	50	52
Octagon extension rings – (slot & key permit mounting without removing box screws)							
TP284 ^F	-	4 - 1/2"	-	No	50	50	36
TP286 ^F	-	2 - 1/2", 2 - 3/4"	-	No	50	50	36

^B For air plenum (no mounting holes) - not UL Listed.
^F CSA certified. G indicates ground screw installed.
^G Not UL Listed.

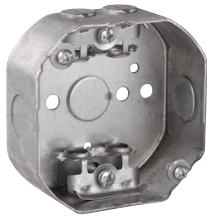
Steel octagon boxes & ceiling pans

4" OCTAGON OUTLET BOXES – 15.5 CUBIC INCH CAPACITY

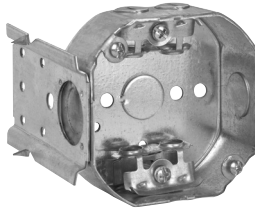
1½" DEEP

FOR ARMORED & METAL-CLAD (MCI) CABLE – CLAMPS IN EACH END

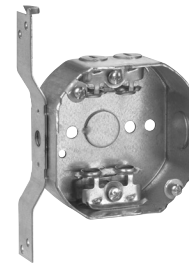
UL LISTED



TP310



TP312



TP314

Cat. #	Description	Knockouts		Fan rated (weight lbs.)	Fixture rated (weight lbs.)	Unit qty.	Wt. lbs. per 100
		Sides	Bottom				
TP310 ^A	-	4 - cable, 2 - ½"	1 - ½"	No	50	50	57
TP310G ^{A F}	-	4 - cable, 2 - ½"	1 - ½"	No	50	50	57
TP312 ^A	"C" bracket	4 - cable, 2 - ½"	1 - ½"	No	50	50	66
TP312G ^{A F}	"C" bracket	4 - cable, 2 - ½"	1 - ½"	No	50	50	66
TP314 ^A	"S" bracket, set ½"	4 - cable, 1 - ½"	1 - ½"	No	50	50	64

^AUL approved for use with aluminum interlocking grounding metal-clad cable, Type MCIA (Southwire MCAP™).

MCAP™ is a registered trademark of Southwire Company.

^FCSA certified. G indicates ground screw installed.

4" OCTAGON OUTLET BOXES – 15.5 CUBIC INCH CAPACITY

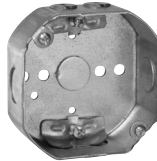
1½" DEEP

FOR NON-METALLIC CABLE – WITH CLAMPS

UL LISTED



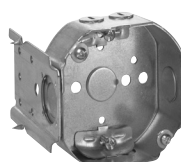
TP275



TP298



TP300



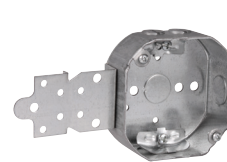
TP302



TP304



TP306



TP308

Cat. #	Description	Knockouts		Fan rated (weight lbs.)	Fixture rated (weight lbs.)	Unit qty.	Wt. lbs. per 100
		Sides	Bottom				
TP275	With mounting screws	4 - cable, 2 - ½"	1 - ½"	70	90	20	66
TP298	-	4 - cable, 2 - ½"	1 - ½"	No	50	50	56
TP300	With side nail holes	4 - cable, 2 - ½"	1 - ½"	No	50	50	55
TP300G ^F	With side nail holes	4 - cable, 2 - ½"	1 - ½"	No	50	50	55
TP302	"C" bracket	4 - cable, 2 - ½"	1 - ½"	No	50	50	65
TP302G ^F	"C" bracket	4 - cable, 2 - ½"	1 - ½"	No	50	50	65
TP304	"S" bracket, set ½"	4 - cable, 1 - ½"	1 - ½"	No	50	50	64
TP306	Two screw ears	4 - cable, 2 - ½"	1 - ½"	No	50	50	58
TP308	"F" bracket, set ½"	4 - cable, 1 - ½"	1 - ½"	No	50	50	64

^FCSA certified. G indicates ground screw installed.

Steel octagon boxes & ceiling pans

4" OCTAGON OUTLET BOXES – 21.5 CUBIC INCH CAPACITY

2 1/8" DEEP

FOR CONDUIT – NO CLAMPS

UL LISTED



TP288, TP290, TP294



TP292, TP838B



TP292RED



TP339

Cat. #	Description	Knockouts		Fan rated (weight lbs.)	Fixture rated (weight lbs.)	Unit qty.	Wt. lbs. per 100
		Sides	Bottom				
TP288	-	4 - 1/2"	3 - 1/2", 2 - 3/4"	No	50	25	64
TP288G ^B	-	4 - 1/2"	3 - 1/2", 2 - 3/4"	No	50	25	64
TP288PF ^E	-	4 - 1/2"	3 - 1/2", 2 - 3/4"	No	50	25	64
TP290	-	4 - 3/4"	3 - 1/2", 2 - 3/4"	No	50	25	64
TP290G ^F	-	4 - 3/4"	3 - 1/2", 2 - 3/4"	No	50	25	64
TP290PF ^E	-	4 - 3/4"	3 - 1/2", 2 - 3/4"	No	50	25	64
TP292	-	2 - 1/2", 2 - 3/4"	3 - 1/2", 2 - 3/4"	No	50	25	64
TP292G ^F	-	2 - 1/2", 2 - 3/4"	3 - 1/2", 2 - 3/4"	No	50	25	64
TP292PF ^E	-	2 - 1/2", 2 - 3/4"	3 - 1/2", 2 - 3/4"	No	50	25	64
TP292RED ^G	-	2 - 1/2", 2 - 3/4"	3 - 1/2", 2 - 3/4"	No	50	25	64
TP294	-	4 - 1"	3 - 1/2", 2 - 3/4"	No	50	25	64
TP294G ^F	-	4 - 1"	3 - 1/2", 2 - 3/4"	No	50	25	64
TP339	Blank bottom	4 - 1/2"	-	No		25	65
Air plenum							
TP838 ^B	For air plenum	2 - 1/2", 2 - 3/4"	3 - 1/2", 2 - 3/4"	No	50	25	62

^BFor air plenum (no mounting holes) - not UL Listed.

^ETP catalog numbers ending in PF include ground screw with pigtail lead.

^FCSA certified. G indicates ground screw installed.

^GNot UL Listed.

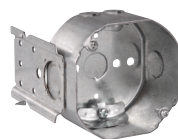
4" OCTAGON OUTLET BOXES – 21.5 CUBIC INCH CAPACITY

2 1/8" DEEP – WITH CABLE CLAMPS

UL LISTED



TP316



TP318



TP320



TP317



TP338

Cat. #	Description	Knockouts		Fan rated (weight lbs.)	Fixture rated (weight lbs.)	Unit qty.	Wt. lbs. per 100
		Sides	Bottom				
For non-metallic cable							
TP316	-	4 - cable, 2 - 1/2"	1 - 1/2"	No	50	25	68
TP318	"C" bracket	4 - cable, 2 - 1/2"	1 - 1/2"	No	50	25	88
TP318G ^F	"C" bracket	4 - cable, 2 - 1/2"	1 - 1/2"	No	50	25	88
TP320	"S" bracket, set 1/2"	4 - cable, 1 - 1/2"	1 - 1/2"	No	50	25	81
For armored & metal-clad (MCI) cable – clamps in each end							
TP317 ^A	-	4 - cable, 2 - 1/2"	1 - 1/2"	No	50	25	69
TP338 ^A	"S" bracket, set 1/2"	4 - cable, 1 - 1/2"	1 - 1/2"	No	50	25	82
TP338PF ^E	"S" bracket, set 1/2"	4 - cable, 1 - 1/2"	1 - 1/2"	No	50	25	82

^AUL approved for use with aluminum interlocking grounding metal-clad cable, Type MCIA (Southwire MCAP™).

MCAP™ is a registered trademark of Southwire Company.

^ETP catalog numbers ending in PF include ground screw with pigtail lead.

^FCSA certified. G indicates ground screw installed.

Steel octagon covers & accessories

4" OCTAGON BOXES & ADJUSTABLE BAR SETS – CUBIC CAPACITY (SEE BELOW) UL LISTED



TP274BH



TP275BH



TP288BH



TP292BH



TP298BH



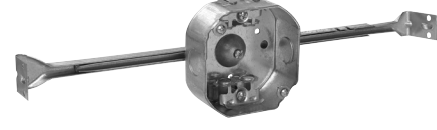
TP310BH



TP315



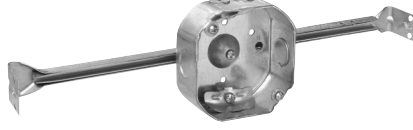
TP317BH



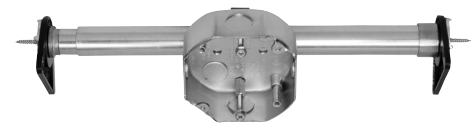
TP367



TP372



TP377



TP379

Steel boxes

Cat. #	Stud spacing	Ground pigtail	Depth	Cubic inches	Knockouts		Fan rated (weight lbs.)	16" Fixture rated (weight lbs.)	24"Fixture rated (weight lbs.)	Unit qty.	Wt. lbs. per 100
					Sides	Bottom					
For conduit – no clamps – new work											
TP372Ⓚ	16"	No	1½"	15.5	4 - ½"	4 - ½"	No	50	-	25	85
TP274BH	16" - 24"	No	1½"	15.5	4 - ½"	4 - ½"	No	50	50	10	70
TP315Ⓚ	16" - 24"	No	1½"	15.5	2 - ½"	2 - ½"	35	150	90	12	192
TP288BH	16" - 24"	No	2⅞"	21.5	4 - ½"	2 - ½", 2 - ¾"	No	50	50	10	70
TP292BH	16" - 24"	No	2⅞"	21.5	2 - ½", 2 - ¾"	2 - ½", 2 - ¾"	No	50	50	10	70
For conduit – no clamps – old work											
TP379	16" - 24"	No	1½"	15.5	4 - ½"	2 - ½"	35	150	50	12	207
For non-metallic cable – with clamps – new work											
TP377	16"	No	1½"	15.5	4 - cable, 2 - ½"	-	No	50	-	25	102
TP275BH	16" - 24"	No	1½"	15.5	4 - cable, 2 - ½"	-	70	90	50	10	201
TP298BH	16" - 24"	No	1½"	21.5	4 - cable, 2 - ½"	-	No	50	50	10	70
For armored & metal-clad (MCI) cable – clamps in each end – new work											
TP367	16"	No	1½"	15.5	4 - cable, 2 - ½"	-	No	50	-	25	100
TP367PF	16"	Yes	1½"	15.5	4 - cable, 2 - ½"	-	No	50	-	25	100
TP310BH	16" - 24"	No	1½"	15.5	4 - cable, 2 - ½"	-	No	50	50	10	70
TP317BH	16" - 24"	No	2⅞"	21.5	4 - cable, 2 - ½"	-	No	50	50	10	70

^N 4" octagon box and adjustable bar sets have ½" KOs for conduit.

^P TP315 comes with Romex clamp installed on one side. The other three sides have a ½" KO, a bagged MC clamp and screw, and a bagged plastic NM connector.

Steel octagon covers & accessories

ADJUSTABLE BAR HANGERS

UL LISTED

Features:

- Holding prong holds box in place for nailing
- Design resists bending and twisting
- Locking tabs to hold bar in position



TP356

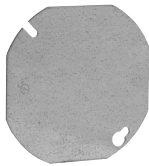


TP352

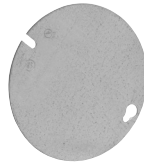
Cat. #	Stud spacing	Fan rated	16" fan weight (lbs.)	24" fan weight (lbs.)	Fixture rated	16" fixture weight (lbs.)	24" fixture weight (lbs.)	Unit qty.	Wt. lbs. per 100
TP356	16"	No	-	-	Yes	50	-	50	41.0
TP352	16" - 24"	Yes	70	70	Yes	90	50	50	72.0

4" OCTAGON BOX COVERS – CUBIC CAPACITY (SEE BELOW)

UL LISTED



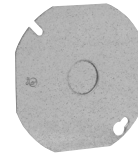
TP322, TP853^B



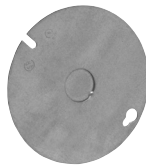
TP323



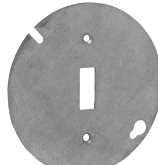
TP326, TP331,
TP332, TP333



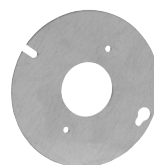
TP328



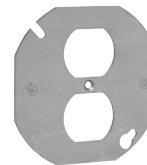
TP329



TP335



TP334



TP336

Cat. #	Description	Capacity cu. in.	Unit qty.	Wt. lbs. per 100
TP322 ^H	Flat blank, octagon shape	-	50	22
TP322RED ^H	Flat blank, octagon shape	-	50	22
TP323 ^H	Flat blank, round shape	-	50	24
TP333 ^C	Raised 1", open with ears 2 ³ / ₄ "	7.8	25	25
TP332 ^C	Raised 1/2", open with ears 2 ³ / ₄ "	3.0	25	20
TP326	Raised 5/8", open with ears 2 ³ / ₄ "	3.8	50	20
TP331 ^C	Raised 3/4", open with ears 2 ³ / ₄ "	5.8	25	25
TP328 ^H	Flat with 1/2" KO, octagon shape	-	50	22
TP329 ^H	Flat with 1/2" KO, round shape	-	50	24
TP335	Flat, for toggle switch	-	50	23
TP334 ^D	Flat, single receptacle 1 ¹³ / ₃₂ "	-	50	21
TP336	Flat, for duplex receptacle	-	50	18

Air plenum

TP853 ^{B D}	Flat, blank with PVC gasket	-	50	24
----------------------	-----------------------------	---	----	----

^BFor air plenum (no mounting holes) - not UL Listed.

^CcUL Listed.

^DNot UL Listed.

^HCSA certified.

Steel octagon covers & accessories

FLEXIBLE FIXTURE HANGERS

TPRFH flexible fixture hangers are used in commercial or light industrial applications where hid high bay and low bay lighting fixtures are used. Specific applications include storage facilities, shipping warehouses, retail and DIY facilities.

Features:

- Suitable for use with 1/2" or 3/4" fixture conduit stems, these hangers allow the conduit stem of the fixture (luminaire) to swing in any direction; maximum swing angle is 26° from vertical max. slope angles 22 1/2°
- Available for attachment to round or octagonal steel boxes
- Quickly and easily attached by two screws
- Hangers are drilled and tapped for use with 3/4" conduit stem as standard and come supplied with a 3/4" - 1/2" reducer for 1/2" conduit stem applications

Certifications and compliances:

- UL1598
- CSA C22.2 No. 250
- Suitable for damp locations



Standard materials and finishes:

- Material – sheet steel
- Finish – zinc chromate for corrosion resistance

Cat. #	Description	Support wt. (lbs.)	Fan rated (weight lbs.)	Fixture rated (weight lbs.)
TPRFH12	For use with 4" round or octagon boxes	50	No	*

*Rating is based on the rating of the outlet box on which it is mounted to.

LAMP HOLDERS

Applications:

- For use with 4" octagon boxes

Standard Material:

- Plastic molded of heat- and impact-resistant material that prevents discoloring and reduces breakage



Cat. #	Description	Unit qty.	Wt. lbs. per 100
TP16099	Lampholder, keyless, feed through	50	23