

E1FW Nickel Plated Brass Cable Glands

Increased Safety and Flameproof

With Elastomer Seal for Armored Cables.

NEC/CEC:
Class I, Division 2, Groups A, B, C, D

ATEX/IECEX:
Class 1, Zone 1 and 2 – 21 and 22
Ⓢ II 2 GD
IP66

HAZARDOUS LOCATION FITTINGS: ATEX/IECEX FLAMEPROOF CABLE GLANDS

Applications

- Cable gland for Single Wire Armored cables (SWA with wire and lead sheath) certified for enclosures with the following protection modes:
 - Ex d flameproof IIB or IIC (as per §10.4.2 of IEC 60079-14) (Refer to the ATX Guide for Use of Electrical Products in Hazardous Locations)
 - Ex e increased safety
 - Ex nR restricted breathing
 - D dust environment
- Hazardous areas (gas and dust).
- Onshore and offshore.

Features

- Cable gland with elastomer seal for use in hazardous areas with Single Wire Armor (SWA) cable.
- The cable gland allows mechanical cable retention and earth continuity via cable armor termination.
- A detachable armor cone and AnyWay clamping ring arrangement facilitates remote make off and enables cable to be disconnected from the equipment.

- Inspection of the armor can be carried out while still maintaining the protection mode of the enclosure.

Standard Materials

- Body: nickel plated brass
- Seal: LSF (Low Smoke Fume) thermoplastic elastomer
 - Inner displacement seal and LRS (Load Retention seal) outer seal

Options

- Lead sheath version – Replace digit E1 with E2; Example: 32E1FW5 - 32E2FW5
- Copper-free aluminum: replace last digit 5 with 1
- Shroud, locknut, earth tag, entry thread seal, serrated washers, adaptors and reducers: see *Cable Gland Accessories* pages.

NEC/CEC Certifications and Compliances

- cCSAus Certified: 101909

Cable Gland Size	Metric Thread C	Catalog Numbers				
		Standard Metric ①	Standard PT C	Standard NPT ①	Optional NPT C	Optional NPT Thread ①
20S16	M20	2016E1FW5	1/2	2016E1FW0505	3/4	2016E1FW0755
20S	M20	20SE1FW5	1/2	20SE1FW0505	3/4	20SE1FW0755
20	M20	20E1FW5	1/2	20E1FW0505	3/4	20E1FW0755
25S	M25	25SE1FW5	3/4	25SE1FW0755	1	25SE1FW1005
25	M25	25E1FW5	3/4	25E1FW0755	1	25E1FW1005
32	M32	32E1FW5	1	32E1FW1005	1-1/4	32E1FW1255
40	M40	40E1FW5	1-1/4	40E1FW1255	1-1/2	40E1FW1505
50S	M50	50SE1FW5	1-1/2	50SE1FW1505	2	50SE1FW2005
50	M50	50E1FW5	2	50E1FW2005	2-1/2	50E1FW2505
63S	M63	63SE1FW5	2	63SE1FW2005	2-1/2	63SE1FW2505
63	M63	63E1FW5	2-1/2	63E1FW2505	3	63E1FW3005
75S	M75	75SE1FW5	2-1/2	75SE1FW2505	3	75SE1FW3005
75	M75	75E1FW5	3	75E1FW3005	3-1/2	75E1FW3505
90	M90	90E1FW5	3	90E1FW3005	3-1/2	90E1FW3505
100	M100	100E1FW5	4	100E1FW4005	5	100E1FW5005
115	M115	115E1FW5	4	115E1FW4005	5	115E1FW5005
130	M130	130E1FW5	5	130E1FW5005	6	130E1FW6005

① Entry thread seal not supplied, see *Cable Gland Accessories and Tools*.

E1FW Nickel Plated Brass Cable Glands

Increased Safety and Flameproof

With Elastomer Seal for Armored Cables.

NEC/CEC:
Class 1, Division 2, Groups A, B, C, D

ATEX/IECEX:
Class 1, Zone 1 and 2 – 21 and 22
Ⓢ II 2 GD
IP66

ATEX/IECEX Certifications and Compliances

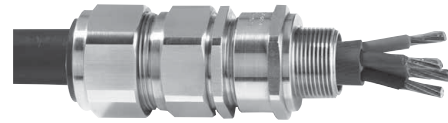
- Certification Type E1FX/Z - E2FX/Z
 - Gas: Zones 1 and 2
 - Type of Protection: Ex d IIC Gb, Ex e IIC Gb, Ex nR IIC Gc
 - Dust: Zone 20
 - Type of Protection: Ex ta IIIC Da
- Conforming to ATEX 94/9/CE: Ⓢ II 2G 3G 1D
- Ambient Temperature: -60 °C to +130 °C (-76 °F to +266 °F)
- CE Declaration of Conformity: DC07001
- ATEX Certificate: Sira 13ATEX1071X, Sira 13ATEX4077X
- IECEx Certificate: IECEx SIR 13.0026X, IECEx SIM 14.0007X
- Other Certifications: KCC, CCOE/PESO (India)
- Marine Approval: LLOYDS, DNV, ABS
- Index of Protection according EN/IEC 60529: IP66
- Deluge Protection Compliance: DTS01:91 (option available on request only)

INMETRO Certification

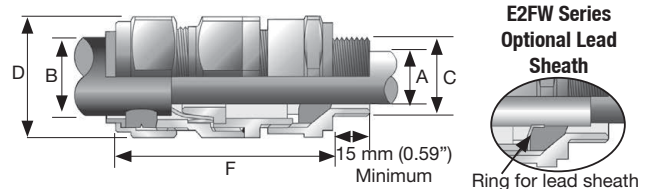
- INMETRO Certificate: TUV 12.0618X

EURASEC Certification

- TC RU C-GB.ГБ05.B.00138



Dimensions in Millimeters (Inches)



HAZARDOUS LOCATION FITTINGS: ATEX/IECEX FLAMEPROOF CABLE GLANDS

Cable Gland Size	Cable Bedding Diameter mm (in) A		Outer Cable Capacity mm (in) B		Across Corners mm (in) D	Across Flats mm (in) D	Nominal Protrusion Length mm (in) F	Optional PVC Shroud	Weight kg (oz)
	Min	Max	Min	Max					
20S16	3.1 (0.12)	8.6 (0.34)	6.1 (0.24)	13.2 (0.52)	26.4 (1.04)	24.0 (0.94)	58.5 (2.30)	PVC04	0.16 (5.64)
20S	6.1 (0.24)	11.6 (0.46)	9.5 (0.37)	15.9 (0.63)	26.4 (1.04)	24.0 (0.94)	58.5 (2.30)	PVC04	0.16 (5.64)
20	6.5 (0.26)	13.9 (0.55)	12.5 (0.49)	20.9 (0.82)	33.6 (1.32)	30.5 (1.20)	60.5 (2.38)	PVC06	0.21 (7.41)
25S	11.1 (0.44)	19.9 (0.78)	14.0 (0.55)	22.0 (0.87)	41.3 (1.63)	37.5 (1.48)	67.5 (2.66)	PVC09	0.33 (11.64)
25	11.1 (0.44)	19.9 (0.78)	18.2 (0.72)	26.2 (1.03)	41.3 (1.63)	37.5 (1.48)	67.5 (2.66)	PVC09	0.33 (11.64)
32	17.0 (0.67)	26.2 (1.03)	23.7 (0.93)	33.9 (1.33)	50.6 (1.99)	46.0 (1.81)	69.5 (2.74)	PVC11	0.45 (15.87)
40	22.0 (0.87)	32.1 (1.26)	27.9 (1.10)	40.4 (1.59)	60.5 (2.38)	55.0 (2.17)	78.0 (3.07)	PVC15	0.66 (23.28)
50S	29.5 (1.16)	38.1 (1.50)	35.2 (1.39)	46.7 (1.84)	66.0 (2.60)	60.0 (2.36)	75.5 (2.97)	PVC18	0.73 (25.75)
50	35.6 (1.40)	44.0 (1.73)	40.4 (1.59)	53.1 (2.09)	77.0 (3.03)	70.0 (2.76)	80.5 (3.17)	PVC21	0.75 (26.45)
63S	40.1 (1.58)	49.9 (1.96)	45.6 (1.80)	59.4 (2.34)	82.5 (3.25)	75.0 (2.95)	91.5 (3.60)	PVC23	1.34 (47.27)
63	47.2 (1.86)	55.9 (2.20)	54.6 (2.15)	65.9 (2.59)	88.0 (3.46)	80.0 (3.15)	92.0 (3.62)	PVC25	1.44 (50.44)
75S	52.8 (2.08)	61.9 (2.44)	59.0 (2.32)	72.1 (2.84)	97.9 (3.85)	89.0 (3.50)	99.0 (3.90)	PVC28	2.07 (73.02)
75	59.1 (2.33)	67.9 (2.67)	66.7 (2.63)	78.5 (3.09)	108.9 (4.29)	99.0 (3.90)	102.0 (4.02)	PVC30	2.62 (92.42)
90	66.6 (2.62)	79.9 (3.15)	76.2 (3.00)	90.4 (3.56)	125.4 (4.94)	114.0 (4.49)	120.0 (4.72)	PVC32	4.17 (147.09)
100	76.0 (2.99)	90.9 (3.58)	86.1 (3.39)	101.5 (4.00)	135.3 (5.33)	123.0 (4.84)	148.0 (5.83)	LSF33	4.52 (159.44)
115	86.0 (3.39)	97.9 (3.85)	101.5 (4.00)	110.3 (4.34)	146.7 (5.78)	133.4 (5.25)	169.0 (6.65)	LSF34	6.86 (241.98)
130	97.0 (3.82)	114.9 (4.52)	114.2 (4.50)	123.3 (4.85)	160.7 (6.33)	146.1 (5.75)	183.0 (7.20)	LSF35	8.12 (286.42)