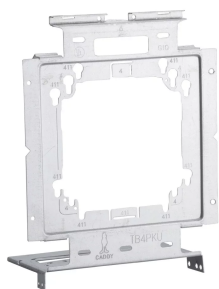




CENTER PLATE FOR HEAVY DUTY TELESCOPING BRACKET

CATALOG NUMBER

TB4PKU



CERTIFICATIONS



FEATURES

Keyhole pattern designed to accommodate both box screw orientations as well as 4" and 4 11/16" box sizes

Can be rotated for top, bottom and side knockout use

Easily snaps on to the nVent CADDY Heavy Duty Telescoping Bracket for between-stud mounting

Box lock tab secures box to bracket during assembly and allows mud ring to be removed following installation on the stud, providing easy frontal access to the inside of the box

Can also be mounted directly to metal or wood studs

Innovative far side support allows bracket to be installed on virtually any stud depth and up to 3" wide studs

Includes holes for mounting mud rings without an electrical box for low voltage applications

Adjustable mud rings mount in vertical or horizontal orientation

Bracket, plate and box can be preassembled to save time on the jobsite

Ideal for pre-fab assemblies

PRODUCT ATTRIBUTES

Material: Steel

WARNING

nVent products shall be installed and used only as indicated in nVent's product instruction sheets and training materials. Instruction sheets are available at www.nvent.com and from your nVent customer service representative. Improper installation, misuse, misapplication or other failure to completely follow nVent's instructions and warnings may cause product malfunction, property damage, serious bodily injury and death and/or void your warranty.

North America +1.800.753.9221 Option 1 – Customer Care Option 2 – Technical Support	Europe Netherlands: +31 800-0200135 France: +33 800 901 793	Europe Germany: 800 1890272 Other Countries: +31 13 5835404	APAC Shanghai: + 86 21 2412 1618/19 Sydney: +61 2 9751 8500
---	--	--	--