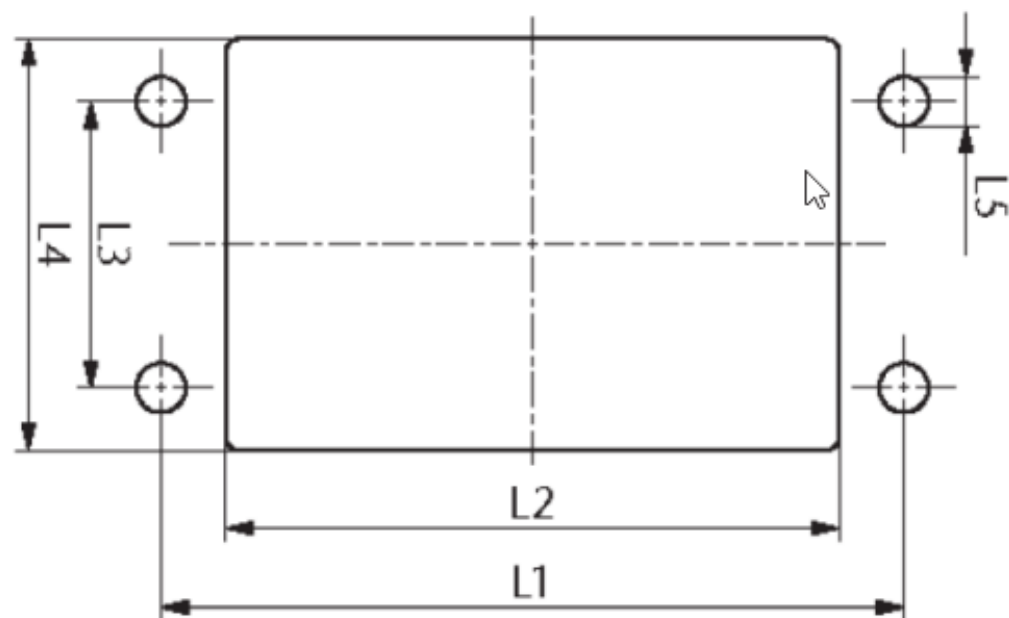




Cable Entry Systems

Cable Entry Gland Plate Connected Inside, CCFI

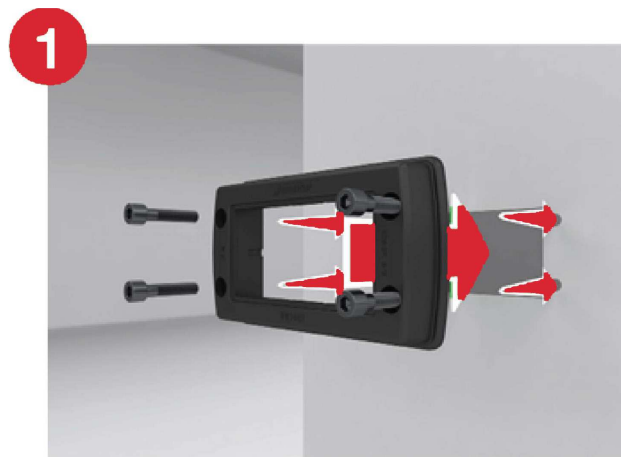


Cutout Dimensions

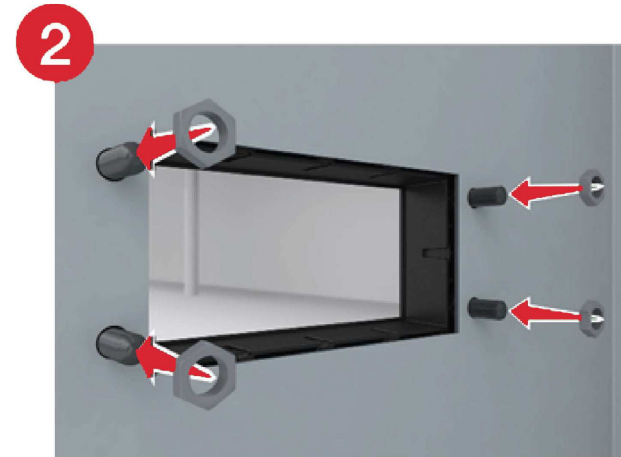
| Frame | Catalog Number | L1 (mm/in.) | L2 (mm/in.) | L3 (mm/in.) | L4 (mm/in.) | L5 (mm/in.) |
|----------------------------------|----------------|-------------|-------------|-------------|-------------|-------------|
| Inside Modular cable entry 1/4 | CCFI14 | 58/2.28 | 46/1.81 | 32/1.26 | 46/1.81 | 5.5/.22 |
| Inside Modular cable entry 6/10 | CCFI610 | 83/3.27 | 68.5/2.70 | 32/1.26 | 46/1.81 | 5.5/.22 |
| Inside Modular cable entry 8/16 | CCFI816 | 103/4.06 | 91/3.58 | 32/1.26 | 46/1.81 | 5.5/.22 |
| Inside Modular cable entry 10/24 | CCFI1024 | 130/5.12 | 113.5/4.47 | 32/1.26 | 46/1.81 | 5.5/.22 |

Combination Options

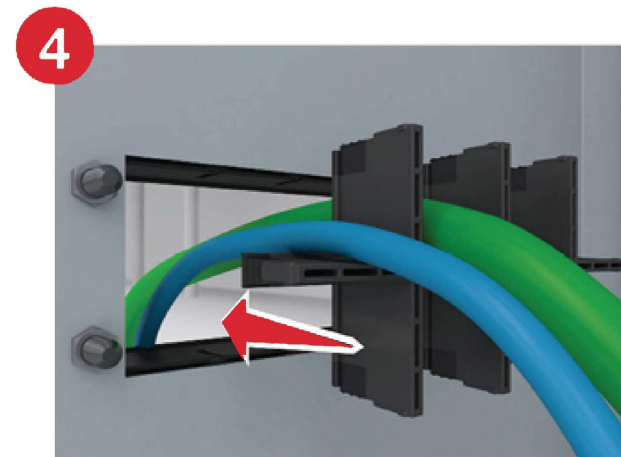
| Frame | INLAY | | | |
|----------------------------------|-------|-------|-------|-------|
| | 1 | 2 | 4 | 6 |
| | CCFD1 | CCFD2 | CCFD4 | CCFD6 |
| Inside Modular cable entry 1/4 | x | x | x | |
| Inside Modular cable entry 6/10 | x | x | x | x |
| Inside Modular cable entry 8/16 | x | x | x | x |
| Inside Modular cable entry 10/24 | x | x | x | x |



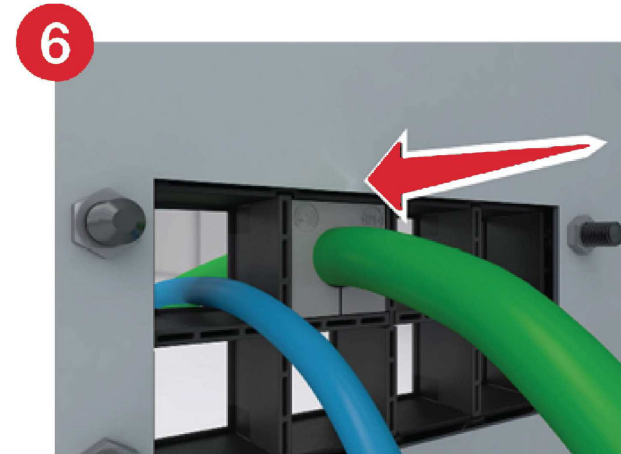
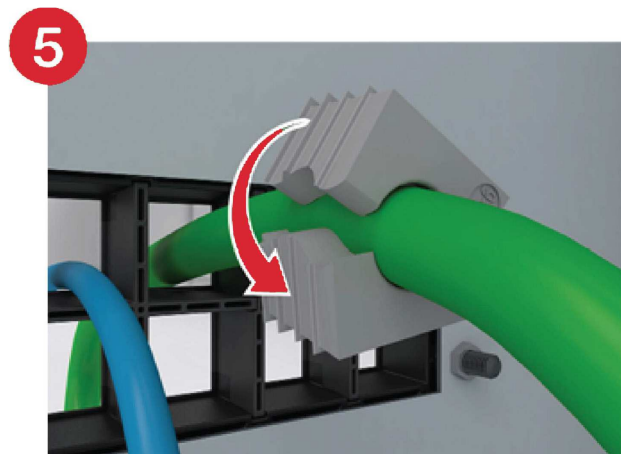
1 We recommend 4 M5 screws with length to account for 3mm thick gland plate, plus thickness of your enclosure.



2 3 Nm (26 in-lbs)



4 Click inlay into position.



6 Push seal all the way in.



According to UL Standard 508A, the following Conditions of Acceptability apply:

- Use M5 screws of stainless steel (AISI type 304 or 316)
- Max. end-use temperature for UL application is 50° C (52° F)
- Max. temperature range: -40° C to 120° C (-40° to 248° F) static