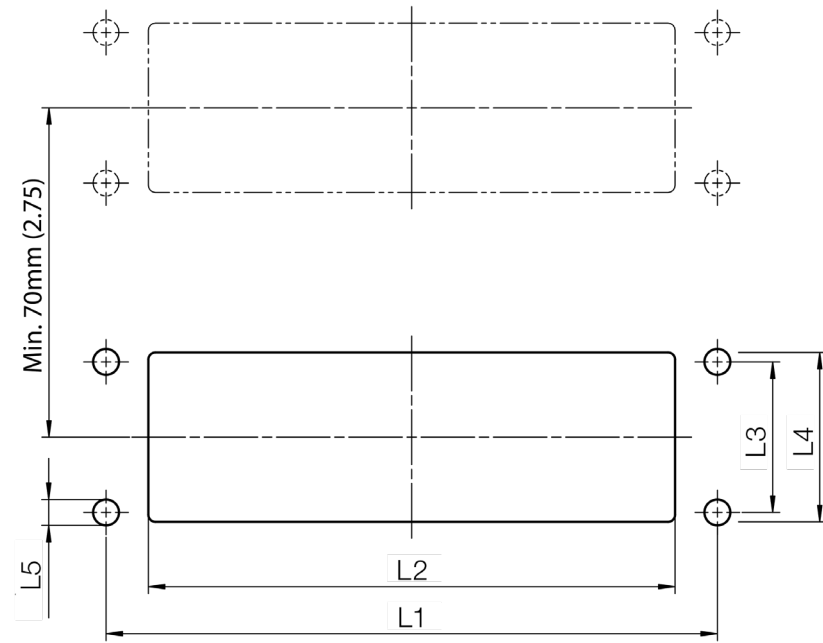


Cable Entry Systems

Cable Entry Gland Plate Connected Outside, CCFO



Cutout Dimensions

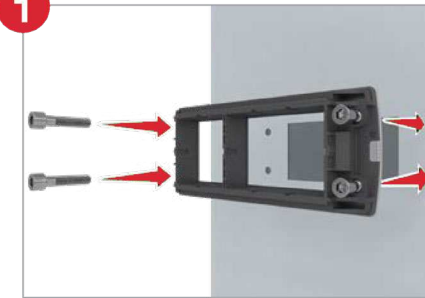
| Frame | Catalog Number | L1 (mm/in.) | L2 (mm/in.) | L3 (mm/in.) | L4 (mm/in.) | L5 (mm/in.) |
|-----------------------------------|----------------|-------------|-------------|-------------|--------------------|-------------|
| Outside Modular cable entry 1/4 | CCFO14 | 58/2.28 | 46/1.81 | 32/1.26 | 36-46 1.42-1.81 | 5.5/.22 |
| Outside Modular cable entry 6/10 | CCFO610 | 83/3.27 | 68.5/2.70 | 32/1.26 | 36-46 1.42-1.81 | 5.5/.22 |
| Outside Modular cable entry 8/16 | CCFO816 | 103/4.06 | 91/3.58 | 32/1.26 | 36-46 1.42-1.81 | 5.5/.22 |
| Outside Modular cable entry 10/24 | CCFO1024 | 130/5.12 | 113.5/4.47 | 32/1.26 | 36-46 1.42-1.81 | 5.5/.22 |

Usage Options

| Frame | INLAY | | | |
|-----------------------------------|-------|-------|-------|-------|
| | 1 | 2 | 4 | 6 |
| | CCFD1 | CCFD2 | CCFD4 | CCFD6 |
| Outside Modular cable entry 1/4 | | | x | |
| Outside Modular cable entry 6/10 | | x | | x |
| Outside Modular cable entry 8/16 | x | | x | |
| Outside Modular cable entry 10/24 | | x | x | x |

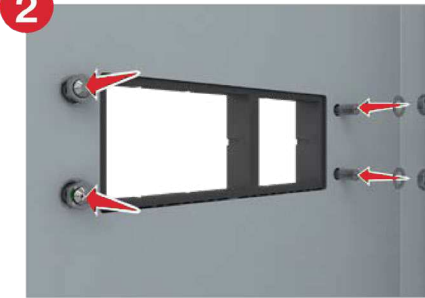
INSTALLATION

1



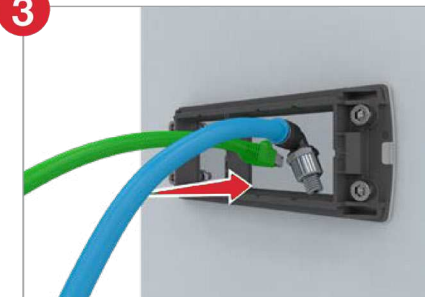
We recommend 4 M5 screws with length to account for 3mm thick gland plate, plus thickness of your enclosure.

2



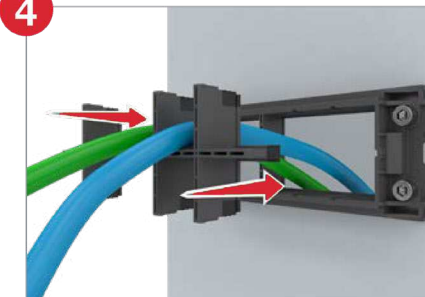
Insert washers and nuts. Tighten nuts from inside, 3 Nm (26 in-lbs).

3



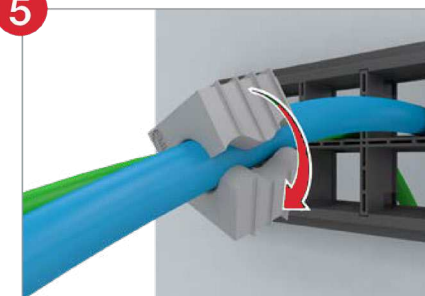
Guide cables through frame.

4



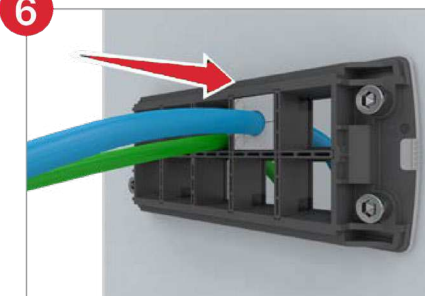
Click inlays into position.

5



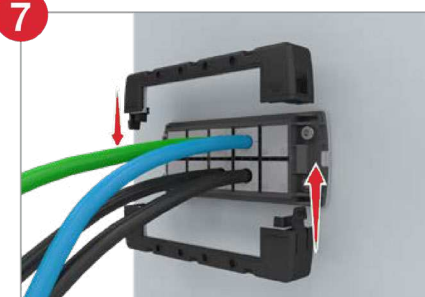
Attach seals to cables.

6



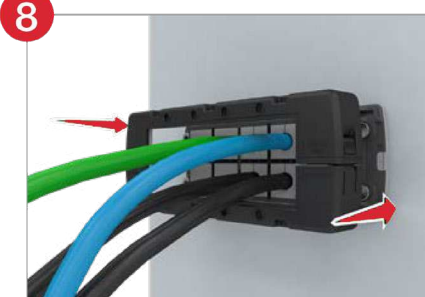
Push seals all the way in.

7



Assemble hood.

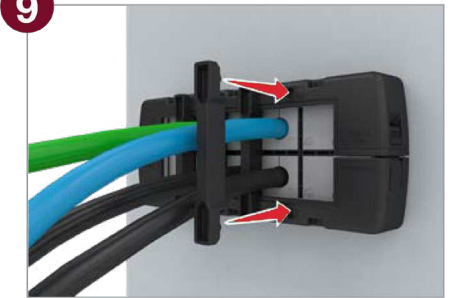
8



Snap hood onto frame.

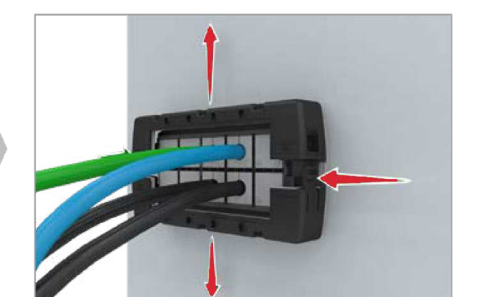
OPTIONAL OUTER LOCKING BARS

9



Snap the optional locking bars into position in the frame.

TO REMOVE THE HOOD



Remove optional locking bars. Press tabs on sides and pull apart.



According to UL Standard 508A, the following Conditions of Acceptability apply:

- Use M5 screws of stainless steel (AISI type 304 or 316)
- Max. end-use temperature for UL application is 50° C (52° F)
- Max. temperature range: -40° C (-40° to 248° F) static