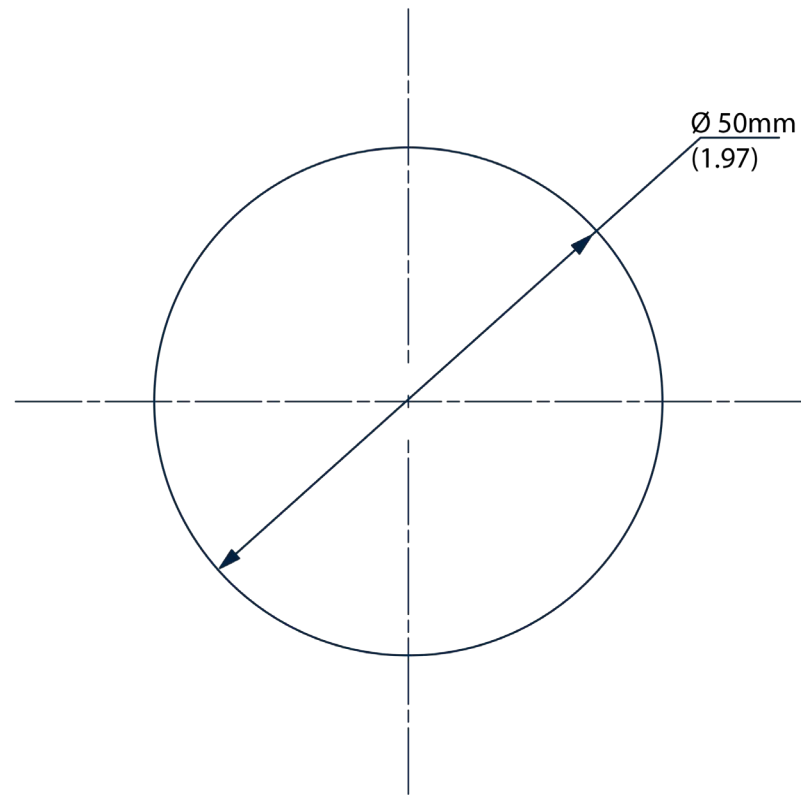


Cable Entry Systems
Cable Entry Gland Plate Round, CEPR

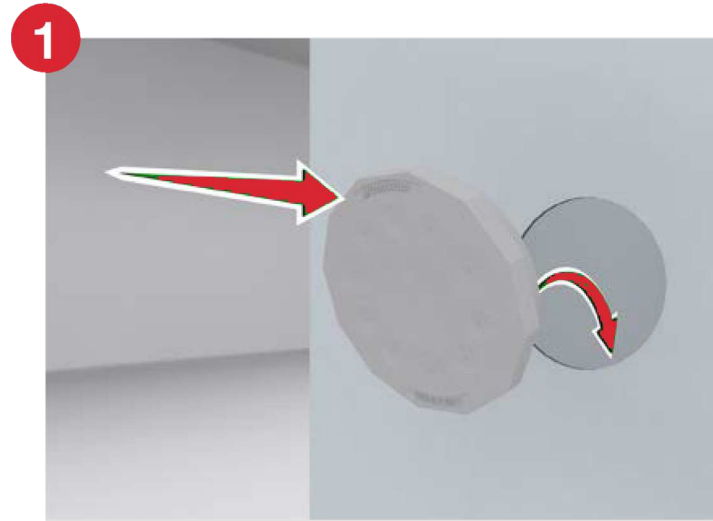
CUTOUT DIMENSIONS



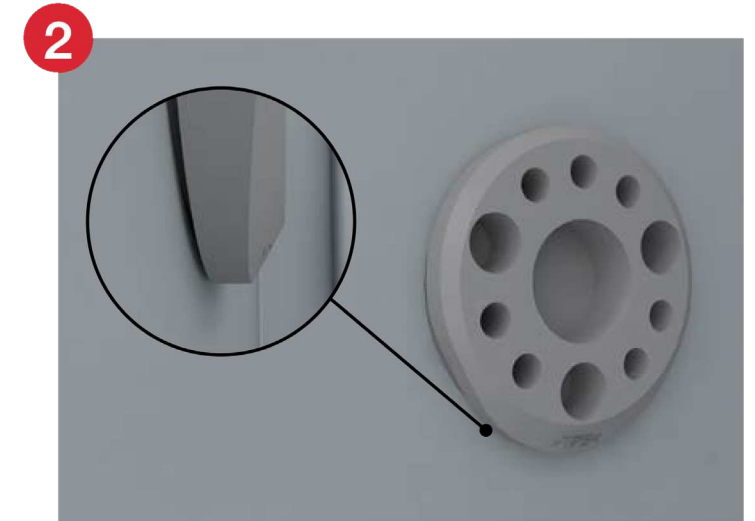
SHEET THICKNESS

Type	Thickness
A	1.5-2.5mm (.06-.10)
B	2.5-4.0mm (.10-.16)

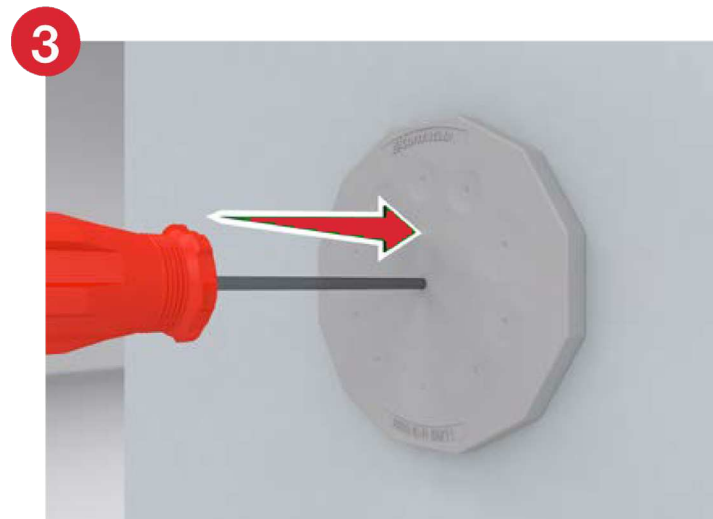
INSTALLATION



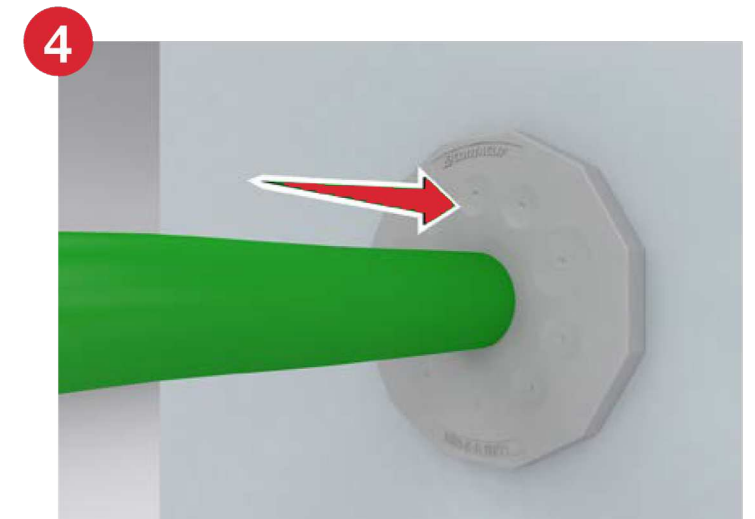
1 Place cable entry into cutout.



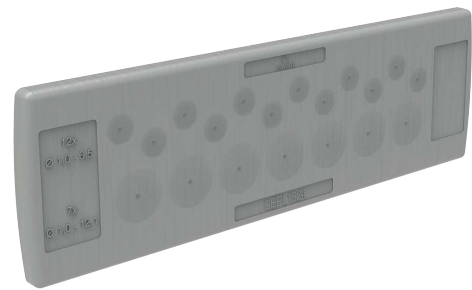
2 Press to snap into cutout.



3 Pierce membrane at push-through point.

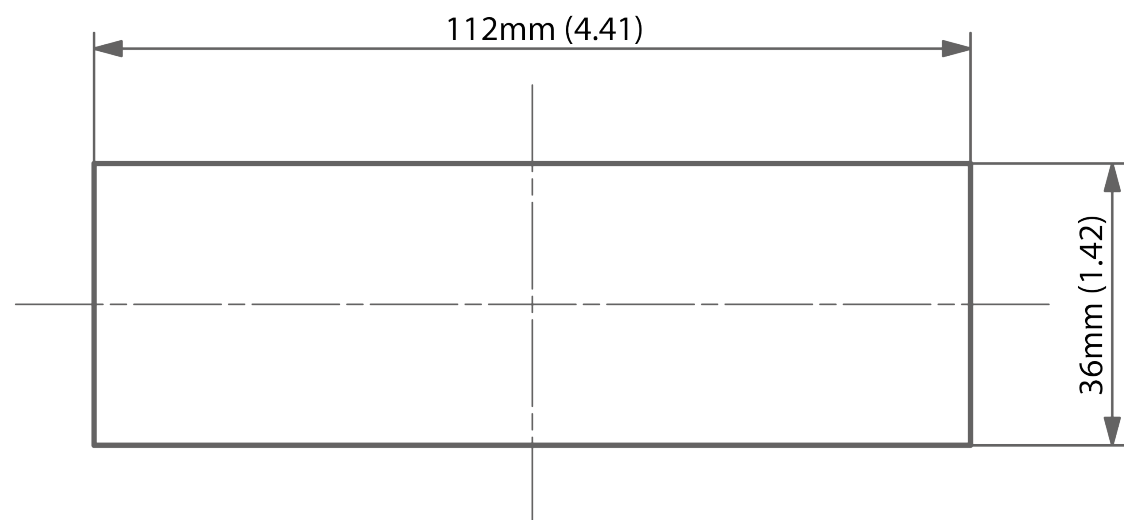


4 Push cables through from outside.



Cable Management System
 Cable Entry Gland Plate Rectangular, CEPL

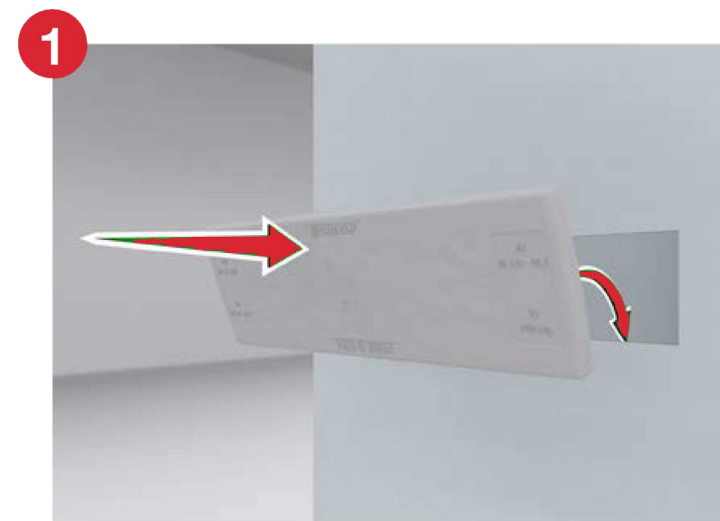
CUTOUT DIMENSIONS



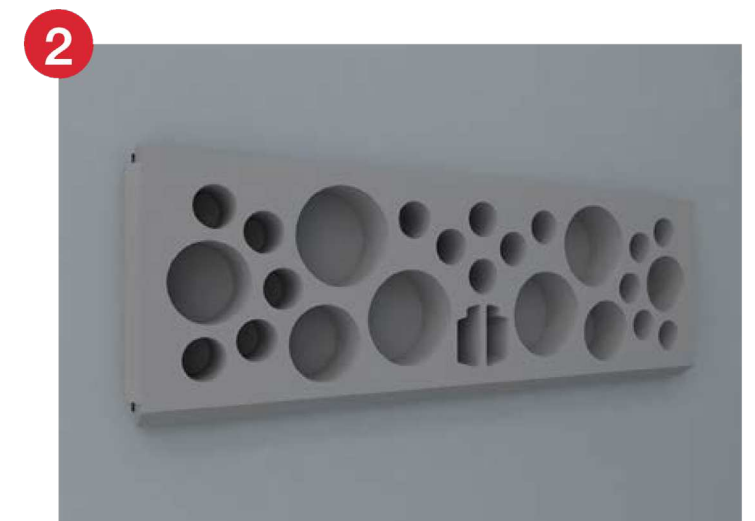
SHEET THICKNESS

Type	Thickness
A	1.5-2.5mm (.06-.10)
B	2.5-4.0mm (.10-.16)

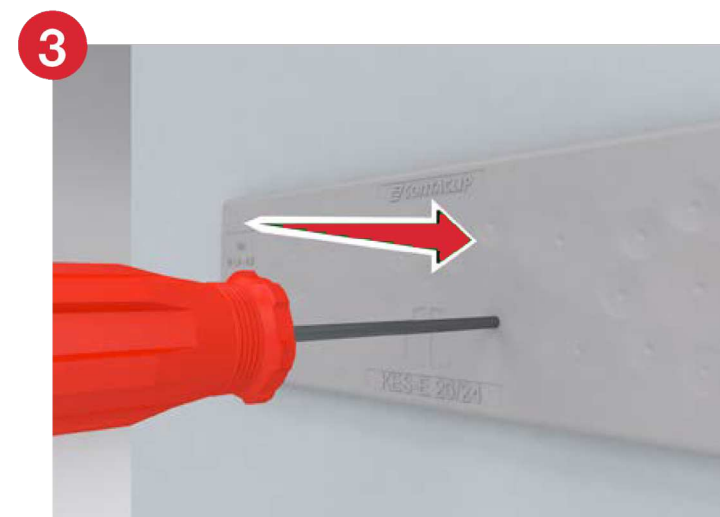
INSTALLATION



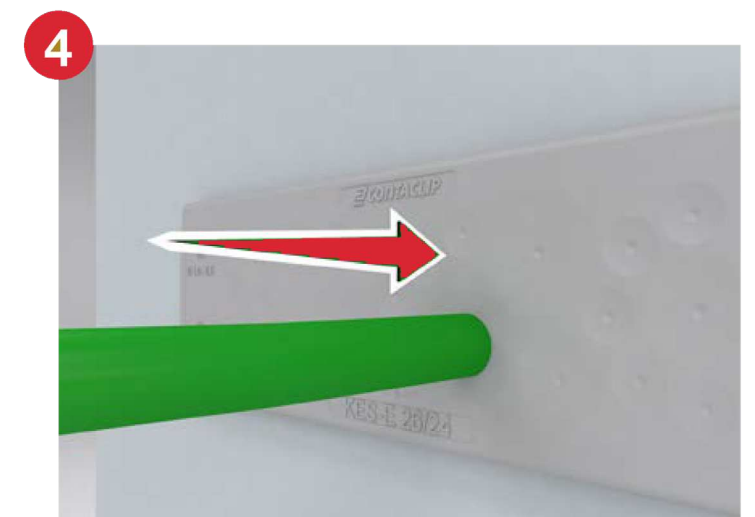
1 Place cable entry into cutout.



2 Press in until all 4 sides snap into cutout.



3 Pierce membrane at push-through point.



4 Push cables through from outside.