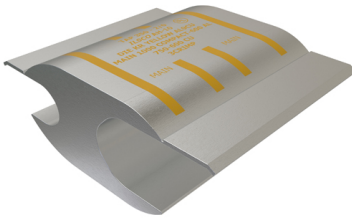


SKU: AH-10

UPC: 0783669004182



Features & Benefits:

Description: Aluminum Compression Tap, Main Range 1000-600, Tap Range 350-2/0, Tin Plated, UL

Specs

Additional Class Attributes

Barrel Marking	Ink
Fixing Type	NA
ILSCOs Die Index Number	KR
Replacement Part(s)	NA

Dimensions

Height (IN)	4.58
Height BX (IN)	3.75
Height (mm)	116.332
Length (IN)	1.74
Length (mm)	44.196
Weight (LB)	1.06858977317632
Weight BX (LB)	6.6093
Width (IN)	3.5
Width BX (IN)	6.5
Width (mm)	88.9

Material and Finish

Conductor Material	Aluminum
Connector Finish	Tin
Insulation	NA
Material	Aluminum

Additional Technical Specifications

Conductor Type	Stranded
----------------	----------

General

Bag Quantity	1
Carton Quantity Description	STD PACK QTY 5
Direct Burial	No
Dual Rated	Yes
NEMA Code	S-588-1
UPC Code	78366900418

Bolt and Screw Sizes

Mounting Bolt/Stud Size	NA
-------------------------	----

Testing Standards

CSA File Number	NA
Prop65 Compliance	This product is in compliance with Prop65. It is not known to contain any chemicals associated with this regulation
UL Control Number	453G
UL / CULUS Specification	UL 486A/B Listed
UL File Number	E158587

Environment and Temperature

Temperature Rating	90°C
--------------------	------

Color

Color	Silver
Color Code	Yellow

Conductor Ranges

Conductor Range AL Solid (Secondary, tap, load)	NA
Conductor Range AL Stranded (Primary, run, main, line)	1000 kcmil COMPACT - 600 kcmil
Conductor Range AL Stranded (Secondary, tap, load)	350 kcmil - 2/0 Str
Conductor Range CU Solid (Primary, run, main, line)	NA
Conductor Range CU Solid (Secondary, tap, load)	NA
Conductor Range CU Stranded (Primary, run, main, line)	750 kcmil - 600 kcmil
Conductor Range CU Stranded (Secondary, tap, load)	350 kcmil - 2/0 Str
Conductor Range AL Solid (Primary, run, main, line)	NA

Voltage

Voltage Rating	35 kV
Voltage Rating with cover	NA