

INSTALLATION, OPERATION & MAINTENANCE DATA SHEET

CUP, PLUG Series Close Up Plugs

FOR USE IN HAZARDOUS LOCATIONS, Ex db IIC Gb, Ex eb IIC Gb, Ex tb IIIC Db

Service/Ambient Temperature: -50°C to + 70°C

DIRECTIONS FOR INSTALLATION

CAUTION: Before installing, make sure you are compliant with area classifications, failure to do so may result in bodily injury, death and property damage. Do not attempt installation until you are familiar with the following procedures. All installation must comply with the applicable Electrical Code.

Make sure that the circuit is De-energized before starting installation or maintenance.

Verify that the installation is grounded. Failure to ground will create electrical shock hazards, which can cause serious injury and or death.

Important: Please read these instructions carefully before installing or maintaining this equipment. Good electrical practices should be followed at all times and this data should be used as a guide only.

WARNING: Do not attempt to install NPT threaded close-up plugs into metric threaded openings.

Step 1

Ensure NPT thread type and size are compatible with enclosure thread.

Where ingress protection of IP66 is required, the use of a suitable non-setting thread sealant is recommended.

Step 2

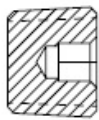
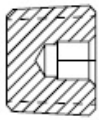
Fully tighten close up plug into the enclosure/equipment using the appropriate tool.

The close up plug should be hand tight plus one wrench turn per ANSI/ASME B1.20.1-1983.

The number of threads engaged must be a minimum of 5.

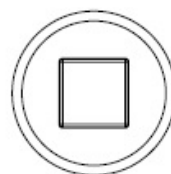
Notes:

1. Do not use close up plugs for closing the entry in an adaptor or reducer.
2. If the enclosure is already in operation, it must be DISCONNECTED from the supplying circuit before beginning installation.



CUP-250, CUP-375, CUP-1,
 CUP-2, CUP-3, CUP-4,
 CUP-5, CUP-6

PLUG250, PLUG375,
 PLUG1, PLUG2, PLUG3



PLUG4, PLUG5



CUP-7, CUP-8, PLUG6, PLUG7,
 PLUG9, PLUG10

CERTIFICATION DETAILS:

SIRA I3ATEX II 196U

IECEX SIR I3.0073U

Ex db IIC Gb

Ex db IIC Gb

Ex eb IIC Gb

Ex eb IIC Gb

Ex tb IIIC Db

Ex tb IIIC Db

0518  II 2 GD

Service/Ambient Temperature: -50°C to + 70°C