



ENCLOSURES
GE SERIES

ALUMINUM OUTLET BODIES WITH TERMINAL BLOCK - UL / CSA



GECTT-2-6TB



GEC-6TB
Terminal Box

NEC / CEC Certifications

Class I, Div. 1 & 2, Groups B, C, & D
Class I, Zone 1 & 2

Groups IIB+H2, IIA

Class II, Div. 1 & 2, Groups E, F, & G
Class III

Type 3, 4, 4X

Ta = -25°C to +40°C (UL)

Ta = -50°C to +40°C (CSA)



File E10514

File LR11716

FEATURES-SPECIFICATIONS

Features

- Water shedding cover – suitable for wet locations
- External cover threads on body protect conductors from damage during pulling
- No pinching of conductors during cover installation
- Three different hub arrangements
- Taper threaded hubs to provide ground continuity
- Smooth integral hub bushing to protect conductor insulation when pulling
- Weather-resistant finish
- Green ground screw standard in all boxes
- Weidmuller 6 point MK3 terminal block is mounted inside box on raised pads
- Type 4 “O” Ring Standard
- Terminal rated 600V UL / 300V CSA / 20 AMP for wire size #22 – 12AWG
- Hub type XTF furnished with mounting flange

Materials

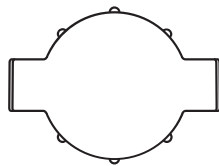
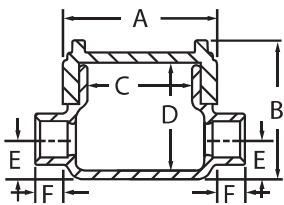
- Body and cover are copper-free aluminum (less than 1/10 of 1%)
- **FINISH** – Electrostatically applied powder coating



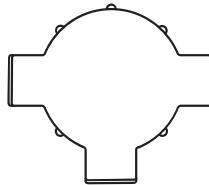
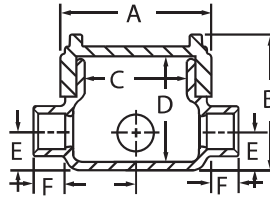
GE SERIES OUTLET BOX WITH 6 POINT TERMINAL BLOCK

HUB TYPE	CATALOG NUMBER	HUB SIZE	A	B	C	D	E	F	COVER OPENING	VOLUME CU. IN./ML
C	GECCT-2-6TB	3/4"	3-11/16" (94)	3-5/8" (92)	2-11/16" (68)	2-3/4" (70)	1" (25)	13/16" (21)	2-11/16" (68)	19 (311)
T	GECTT-2-6TB	3/4"								
X	GECXT-2-6TB	3/4"								
XTF	GECXTF-2-6TB	3/4"					3/4" (19)			

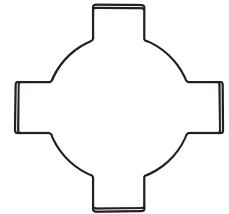
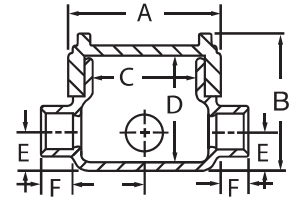
Dimensions in. (mm)



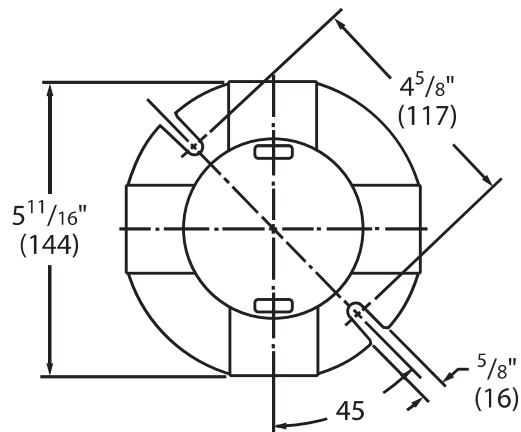
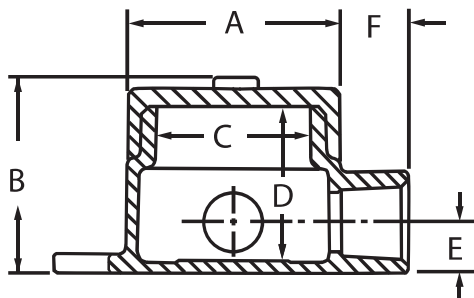
C Type



T Type



X Type



XTF Type
With Mounting Flange