



**GRSA**



**GRR**

**Class I, Div. 1 & 2, Groups C,D**  
**Class II, Div. 1 & 2, Groups E,F,G**  
**Class III**



Listed - File E10514

Certified - File LR11716

See files for details or call Killark.

## FEATURES-SPECIFICATIONS

### GRSA

#### Features

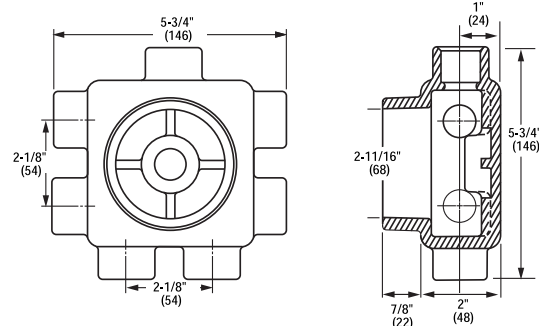
- Cast conduit hubs with integral bushings
- Cover included
- Replacement cover catalog number **GECBC**
- Five close-up plugs included
- Sealing, hub, dome covers and gaskets available (page F56)

#### Material/Finish

- Copper-free aluminum (less than 4/10 of 1%)
- Electrostatically applied powder coating

GRSA W/BLANK COVER		
CATALOG NUMBER	HUBS	VOLUME CU. IN.
GRSA	Furnished with eight 3/4" hubs including one 3/4" flush hub in back center	26.5

#### Dimensions



### GRR

#### Features

- Cast conduit hubs with integral bushings
- Blank cover included
- Replacement cover catalog number **GRRBC**
- Compact size
- Supplied with five hubs and three close-up plugs

#### Material/Finish

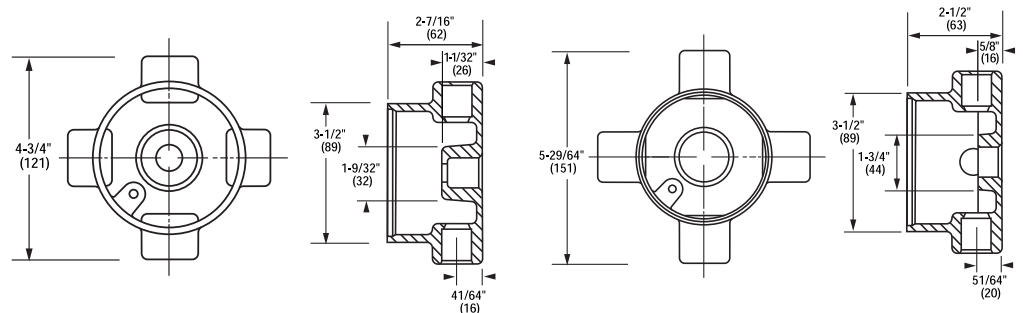
- Copper-free aluminum (less than 4/10 of 1%)
- Electrostatically applied powder coating

GRR W/BLANK COVER		
CATALOG NUMBER	HUB SIZE	VOLUME CU. IN.
GRR-1	1/2"	13.0
GRR-2	3/4"	13.0
GRR-3	1"	14.0

Blank Cover-only-GRRBC

GASKET (RUBBER)	EXTENSION*
CATALOG NUMBER	CATALOG NUMBER
GEC-RG	GRCEX-0

\* Adds 2-7/8" to body depth and 16.48 cu. in.



**GRR 1 & 2**

**GRR-3**



**KILLARK®**