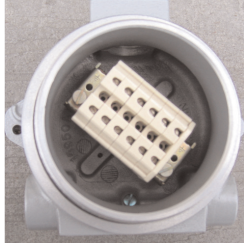


**NEW!**

## HK/2HK ATEX Terminal Box

**UL DEMKO  
Increased Safety/  
Flame Proof  
Terminal Enclosure**



**HKB, 2HKB, HKBD & HKSB Series Housings**

### Features

- Select from 4 body types and 6 different covers
- Single port box provided with two 3/4 NPT standard. One additional 1/2 or 3/4 NPT can be added. Double port provided with three 3/4 NPTS as standard.
- Select from 4 major terminal block manufacturers.
- Maximum (10) 2.5mm<sup>2</sup> blocks. Quantity doubles for 2HKB's.
- 630 Volts max. and 60 Amps max.

### North American Certifications



- Class I, Groups A\*,B,C,D
- Class I, Zone 1, Groups IIA, IIB + H<sup>2</sup>
- Class II, Groups E,F,G
- Class III
- Enclosure Type 3R, 3, 4, 4X
- \*Group A with FM only

### European Union (EU) Certifications



- UL DEMKO 06 ATEX 0521635/141023 **CE**0539
- II 2 G EEx e II T4
- II 2 G EEx d IIC T4
- II 2 D IP66

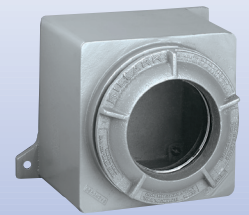


# KILLARK®

## Hazardous Location Enclosures For Global Applications



**NEC IEC  
CENELEC/  
ATEX**



**PTB DEMKO  
ISO 9001:2000**



## KILLARK®

3940 M.L. King Dr. St. Louis, MO 63119  
TEL: (314) 531-0460 FAX: (314) 531-7164  
[www.hubbell-killark.com](http://www.hubbell-killark.com)

RACO® BELL® KILLARK® HAWKE® CHALMIT®

Distributed By:



# Bolted Enclosures

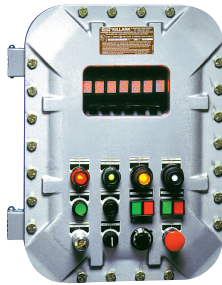
# Threaded Enclosures

# Instrument Housings

## Quantum® EXB Series

### Features

- 39 sizes available; 6 x 6 x 4 thru 24 x 36 x 10 internal dimensions.
- Blank, modified or completely outfitted
- Enclosures come standard with NEMA 4/IP66 "O" ring gasketing and hinges
- Full line of enclosure accessories; standard/custom viewing windows up to 9" x 9", operating handles up to 1,200 Amps and accepting 5 major breaker/switch manufacturers, a full complement of control/pilot devices in three different lengths to meet all applications, NPT and metric openings for conduit or cable glands, drain/breathers, powder paint options and mounting pans.



### North American Certifications



- Class I, Groups B, C, D
- Class I, Zone 1, Groups IIA, IIB + H<sup>2</sup>
- Class II, Groups E, F, G
- Class III
- Enclosure Type 3R, 3, 4, 4X

### European Union (EU) Certifications



- PTB 02 ATEX 1073U  
II 2 G EEx d IIB or Ex d IIB + H<sup>2</sup>  
II 2 D IP66
- PTB 02 ATEX 1074 **CE**0539  
II 2G EExd IIB T6 or T5  
II 2G Exd IIB + H<sup>2</sup> T6 or T5  
II 2 D IP66 T80°C or T95°C

## GR Series

### Features

- 8 sizes available; 4 5/8 x 4 5/8 x 4 3/16 thru 11 x 12 x 16 3/16 internal dimensions.
- Box and covers are supplied with gray powder epoxy paint as standard.
- Enclosures supplied with a NEMA 4/IP66 "O" ring gasket as standard.
- Offered as blank or modified
- Available with blank, viewing lens and dome covers. Box and cover can be purchased separately
- Accessories include; Internal mounting pans, drain/breathers, control/pilot devices, NPT and metric openings for conduit or cable glands.
- **WIDEST RANGE OF CERTIFICATIONS ON THE MARKET TODAY**



### North American Certifications



- Class I, Groups B, C, D
- Zone 1, Groups IIA, IIB + H<sup>2</sup>
- Class II, Groups E, F, G
- Class III
- Enclosure Type 3R, 3, 4, 4X

### European Union (EU) Certifications



- PTB 02 ATEX 1071U  
II 2 G EEx d IIC or EExd IIB + H<sup>2</sup>  
II 2 D IP66
- PTB 02 ATEX 1072 **CE**0539  
II 2 G EEx d IIC T6 or T5  
II 2 G EEx d IIB + H<sup>2</sup> T6 or T5  
II 2 D IP66 T80°C or T95°C

### International IEC Ex Certifications

NEW 2006 IEC Ex Certification included on all GR ATEX Enclosures

- Exd IIC or Exd IIB + H<sup>2</sup> T6 or T5  
Ex tD A21 IP66 T80°C or T95°C  
IEC Ex PTB 05.0029

## HK/2HK Series

### Features

- 3 body styles; 3 3/16 deep single port in aluminum and 316 cast stainless steel, and 4 3/16 deep single port and double port in aluminum only
- Box and covers are supplied with gray powder epoxy paint as standard.
- NEMA 4 / IP66 "O" ring gasket standard
- Single port boxes are provided with (2) 3/4 NPT openings as standard with the option of up to two additional openings 1/2 or 3/4 NPT/NPSM. Double port comes standard with (3) 3/4 NPT's.
- 3 depths of solid covers; flat, 2" dome and 4" dome.
- 3 depths of lens covers; flat, 1" dome and 2" dome.
- All covers and boxes are interchangeable. Boxes and covers can be purchased as a complete assembly or separately.
- A wide variety of internal drilled & tapped holes available for device mounting.
- Custom colors are available.
- The HKSB 316 stainless steel unit is only offered with a solid flat cover or a flat lens cover.



HK



2HK

### North American Certifications



- Class I, Groups A\* B, C, D
- Class I, Zone 1, Groups IIA, IIB + H<sup>2</sup>
- Class II, Groups E, F, G
- Class III
- Enclosure Type 3R, 3, 4, 4X  
\*Group A with FM only

### European Union (EU) Certifications



- DEMKO 01 ATEX 015742U  
II 2 G/D EEx d IIC, IP66