

PRODUCT INFORMATION PACKET

Model No: 096065.00

Catalog No: 096065.00

Parallel Shaft Gearmotor, 0.17 HP, 3 Ph, 60 Hz, 208-230/460 V, 9 RPM, 42Y Frame, TEFC



Regal and are trademarks of Regal Rexnord Corporation or one of its affiliated companies.
©2022 Regal Rexnord Corporation, All Rights Reserved. MC017097E

Nameplate Specifications

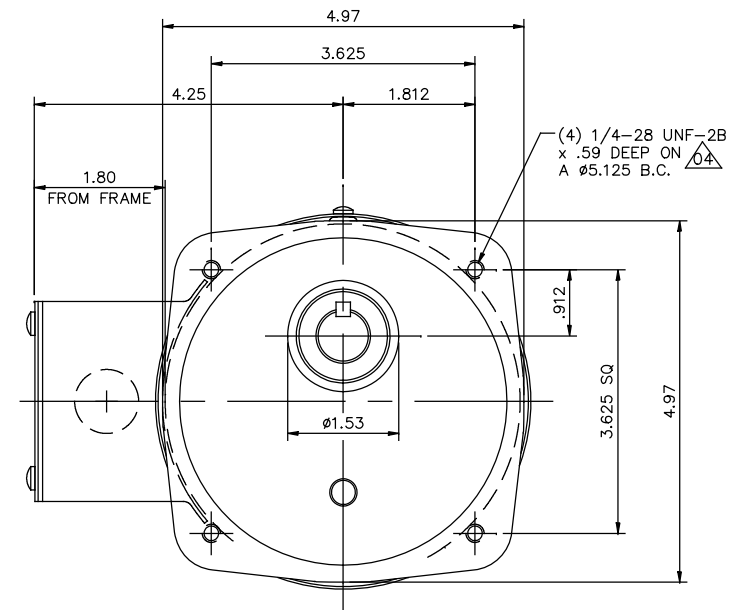
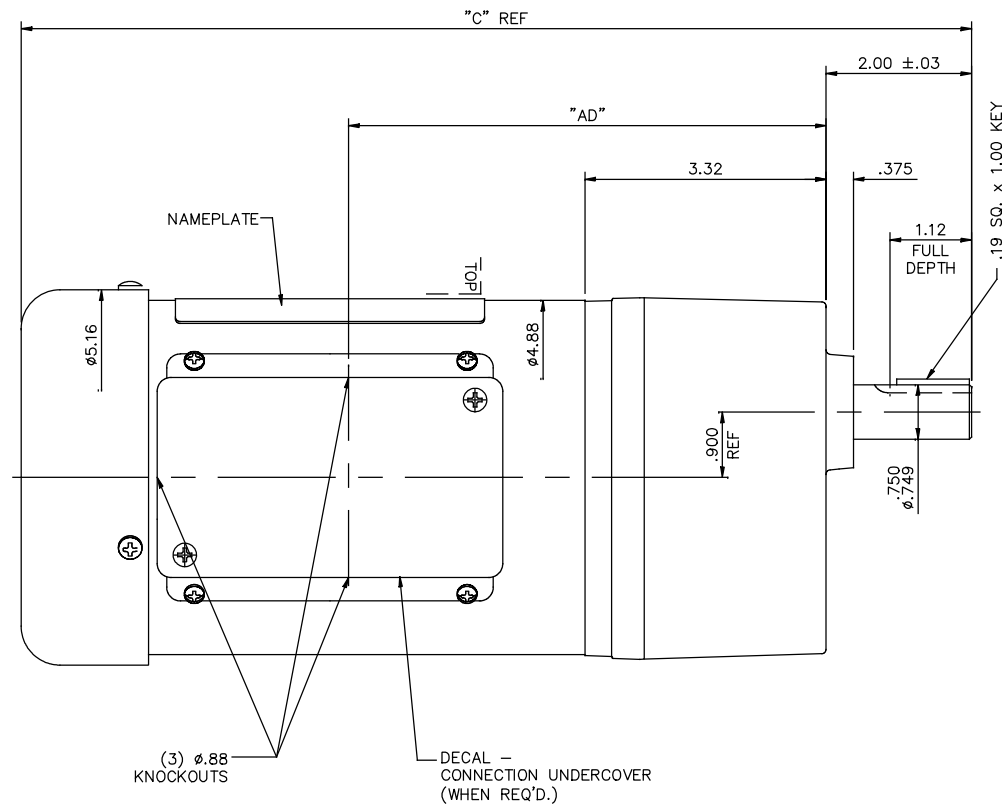
Output HP	0.17 Hp	Output KW	0.12 kW
Frequency	60 Hz	Voltage	208-230/460 V
Current	1.0/0.50 A	Speed	9 rpm
Service Factor	1	Phase	3
Power Factor	55	Duty	Continuous
Insulation Class	F	KVA Code	N
Frame	42Y	Enclosure	Totally Enclosed Fan Cooled
Thermal Protection	No Protection	Ambient Temperature	40 °C
Drive End Bearing Size	6203	Opp Drive End Bearing Size	6201
UL	Recognized	CSA	Y
CE	N		

Technical Specifications


Rotation	Reversible	Mounting	Special
Shaft Type	Parallel	Overall Length	13.07 in
Frame Length	6.00 in	Shaft Diameter	0.750 in
Shaft Extension	1.625 in	Torque	341 LB-IN
Connection Drawing	005010.01	Outline Drawing	027874-096065

This is an uncontrolled document once printed or downloaded and is subject to change without notice. Date Created:09/19/2022

027874



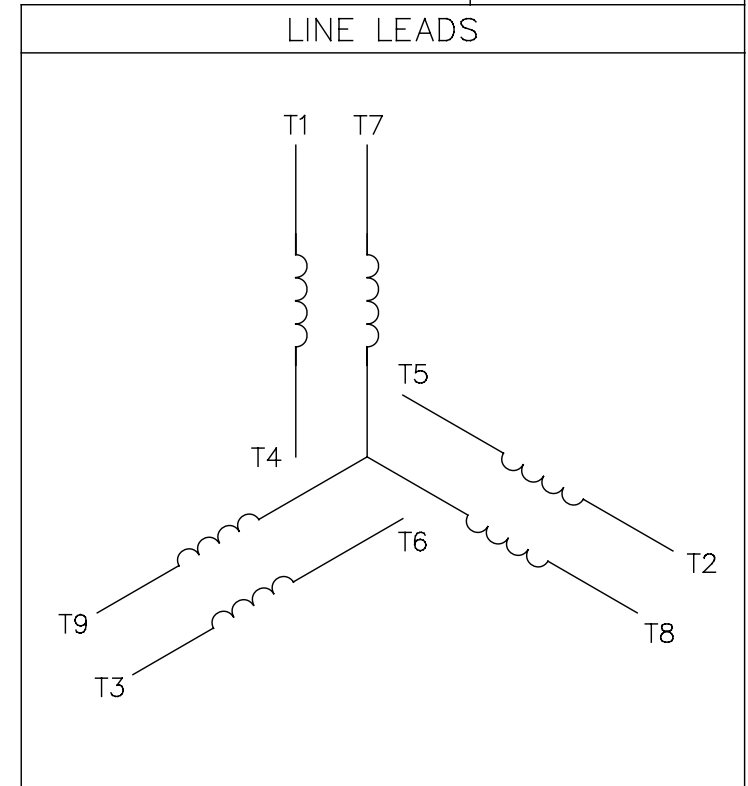
CATALOG NUMBER	OUTPUT RPM	FULL LOAD TORQUE LB.-IN.	INPUT HP	OVERHUNG LOAD LBS.	RATIO TO 1	"C"	"AD"
096065.00	9	341	1/6	327	180	13.07	6.56
096066.00	29	300	1/4	327	58	13.07	6.56
096067.00	58	244	1/4	327	30	13.07	6.56
096068.00	85	165	1/4	327	20	13.07	6.56
096069.00	173	92	1/4	327	10	13.07	6.56
096070.00	345	50	1/4	327	5	13.07	6.56

				TOLERANCES UNLESS SPECIFIED				ELECTRIC MOTORS GEARMOTORS AND DRIVES		DRAWN LST 5/17/05	
04	THREAD DEPTH WAS .63"			JD	06/06/17	DEC. INCHES				CHK	RW 5/17/05
03	ADDED 096065.00 TO PRINT			RDW	4/18/07	KH	.X	±.1			APPD KH 5/17/05
02	096070.00 RPM WAS 58, TORQUE WAS 244 & RATIO WAS 30			RDW	12/14/05	SW	.XX	±.03	TITLE	OUTLINE - 42Y FRAME TEFC - PE350 GEARMOTOR	SCALE 5=8
01	ADDED PERFORMANCE ATTRIBUTES TABLE			RLW	7/7/05		.XXX	±.0005	MAT'L		REF PR040182
NO.	REVISION			BY & DATE	CHK	ANG	±1/2"	FINISH		PREV	
THIS DRAWING IN DESIGN AND DETAIL IS OUR PROPERTY AND MUST NOT BE USED EXCEPT IN CONNECTION WITH OUR WORK. ALL RIGHTS OF DESIGN AND INVENTION ARE RESERVED. THIS IS AN ELECTRONICALLY GENERATED DOCUMENT - DO NOT SCALE THIS PRINT						RFP	CAD FILE 027874		SIZE B	DRAWING NO. 027874	REV. 04


ELECTRIC MOTORS
GEARMOTORS
AND DRIVESOUTLINE - 42Y FRAME
TEFC - PE350 GEARMOTOR

005010-01

VIEW FROM OUTSIDE OF MOTOR AT SWITCH END.



VOLTAGE	L1	L2	L3	JOIN & INSULATE
HIGH	T1	T2	T3	(T4,T7) (T5,T8) (T6,T9)
LOW	T1,T7	T2,T8	T3,T9	T4,T5,T6

				TOLERANCES UNLESS SPECIFIED		 Regal Beloit America, Inc.			DRAWN RDW 04/12/02	
				DEC.	INCHES				CHK	
				.X	±.1				APPD	
				.XX	±.01				SCALE 1=1	
				.XXX	±.005	TITLE EXTERNAL WIRING DIAGRAM 3 PHASE W/O PROTECTOR			REF FIG.2-51	
A	UPDATED TO REGAL LOGO	SAJ 06/26/15	AJY	.XXXX	±.0005				MAT'L DECAL - 004014	
NO.	REVISION	BY & DATE	CHK	ANG	±1/2"	FINISH			PREV	
THIS DRAWING IN DESIGN AND DETAIL IS OUR PROPERTY AND MUST NOT BE USED EXCEPT IN CONNECTION WITH OUR WORK ALL RIGHTS OF DESIGN AND INVENTION ARE RESERVED THIS IS AN ELECTRONICALLY GENERATED DOCUMENT - DO NOT SCALE THIS PRINT			RFP 04/12/02		CAD FILE 00501001		SIZE A	DRAWING NO. 005010-01		REV. A
			DIST BRF-NLV							