

PRODUCT INFORMATION PACKET



Model No: 102860.00

Catalog No: 102860.00

General Purpose Motor, 0.50 HP, 3 Ph, 60 Hz, 230/460 V, 1800 RPM, S56C Frame, TEFC

Operational at 208-230/460 V @60HZ



Regal and Leeson are trademarks of Regal Rexnord Corporation or one of its affiliated companies.

©2023 Regal Rexnord Corporation, All Rights Reserved. MC017097E





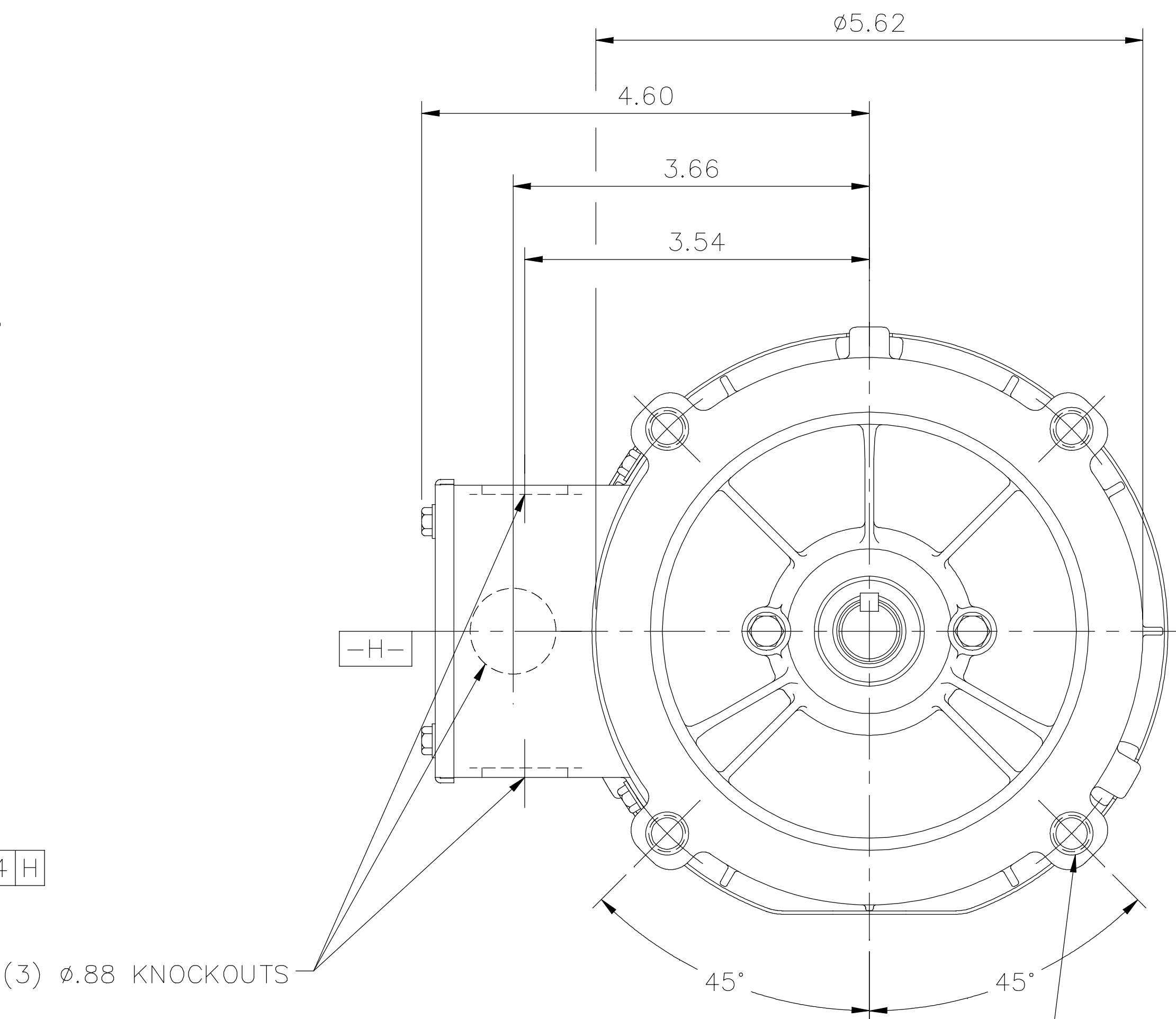
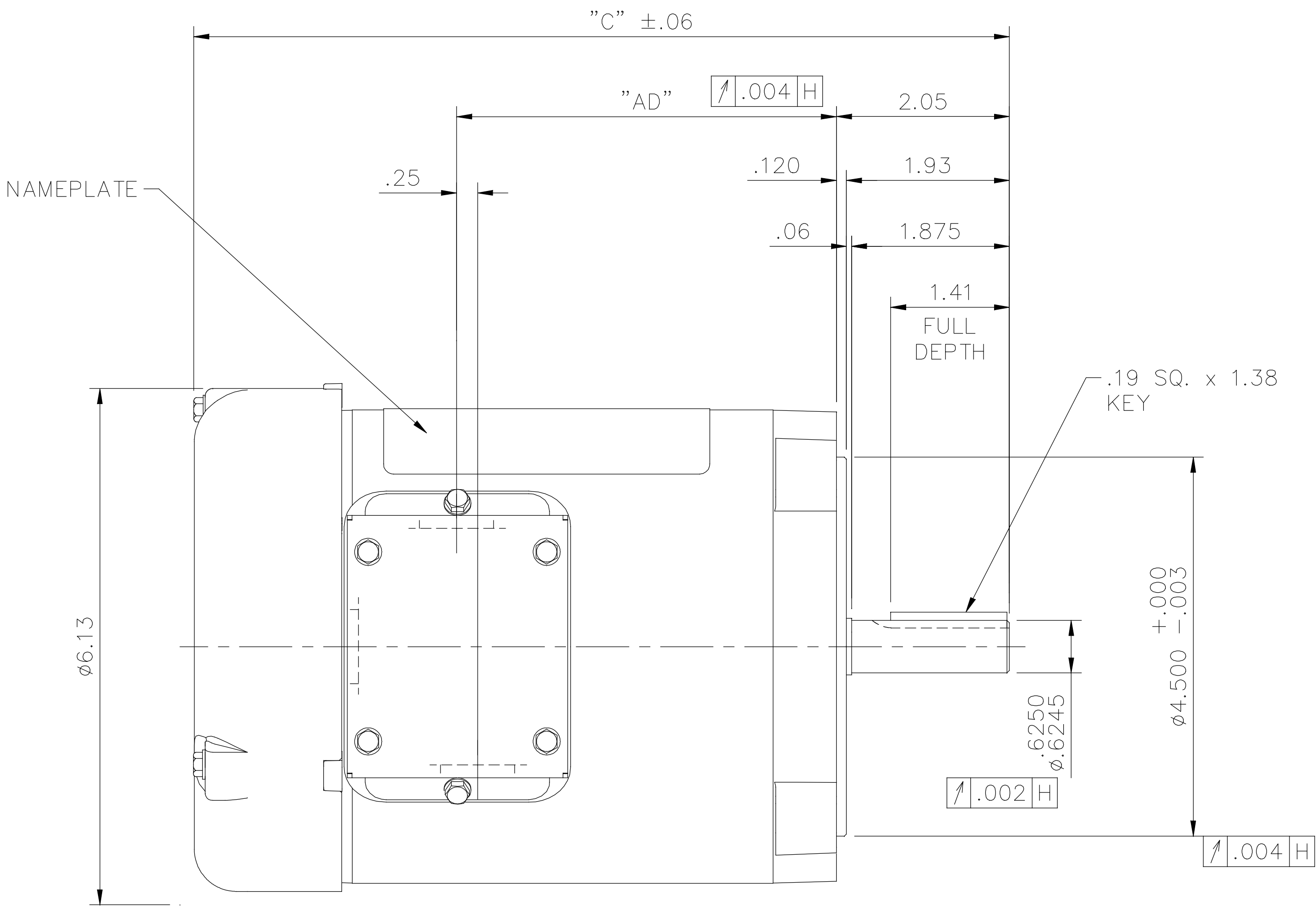
Nameplate Specifications

Phase	3	Output HP	0.50 Hp
Output KW	0.37 kW	Voltage	230/460 V
Speed	1725 rpm	Service Factor	1.15
Frame	S56C	Enclosure	Totally Enclosed Fan Cooled
Thermal Protection	No Protection	Efficiency	73 %
Ambient Temperature	40 °C	Frequency	60 Hz
Current	2.0/1.0 A	Power Factor	62
Duty	Continuous	Insulation Class	B
Design Code	B	KVA Code	L
Drive End Bearing Size	6203	Opp Drive End Bearing Size	6203
UL	Recognized	CSA	Y
CE	N	IP Code	43
Number of Speeds	1		

Technical Specifications


Electrical Type	Squirrel Cage Induction Run	Starting Method	Across The Line
Poles	4	Rotation	Reversible
Resistance Main	8.91 Ohms	Mounting	Round
Motor Orientation	Horizontal	Drive End Bearing	Ball
Opp Drive End Bearing	Ball	Frame Material	Rolled Steel
Shaft Type	NEMA 56	Overall Length	10.19 in
Frame Length	5.50 in	Shaft Diameter	0.625 in
Shaft Extension	1.88 in	Assembly/Box Mounting	F1 ONLY
Outline Drawing	031637-550	Connection Drawing	005010.01

031637



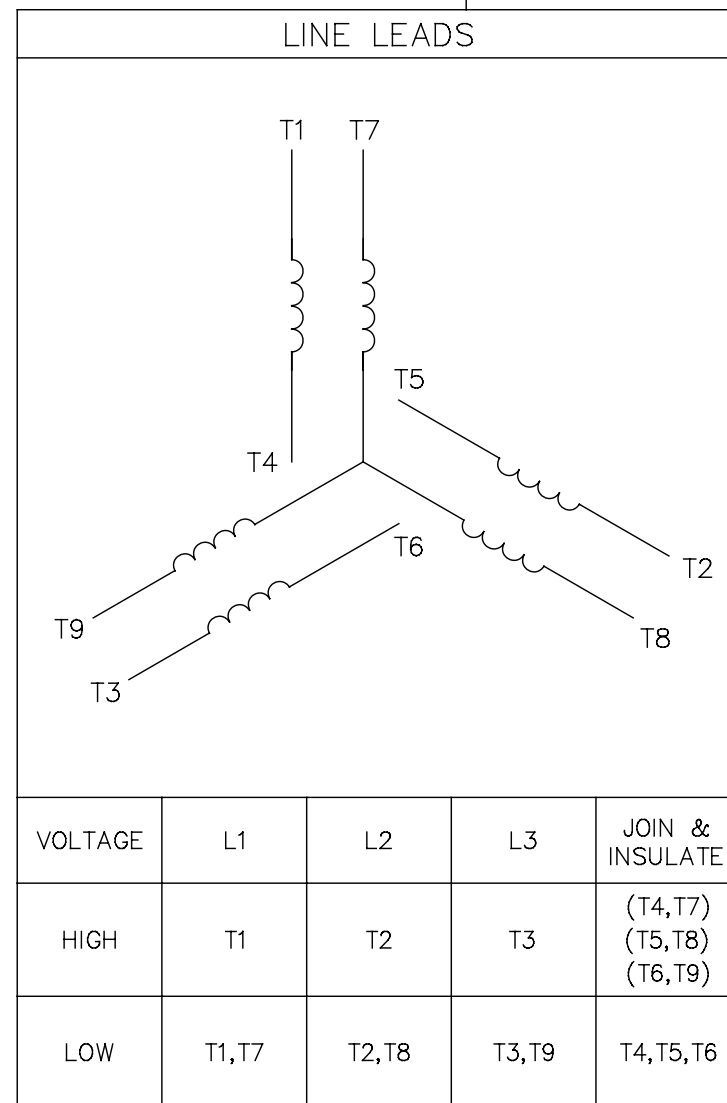
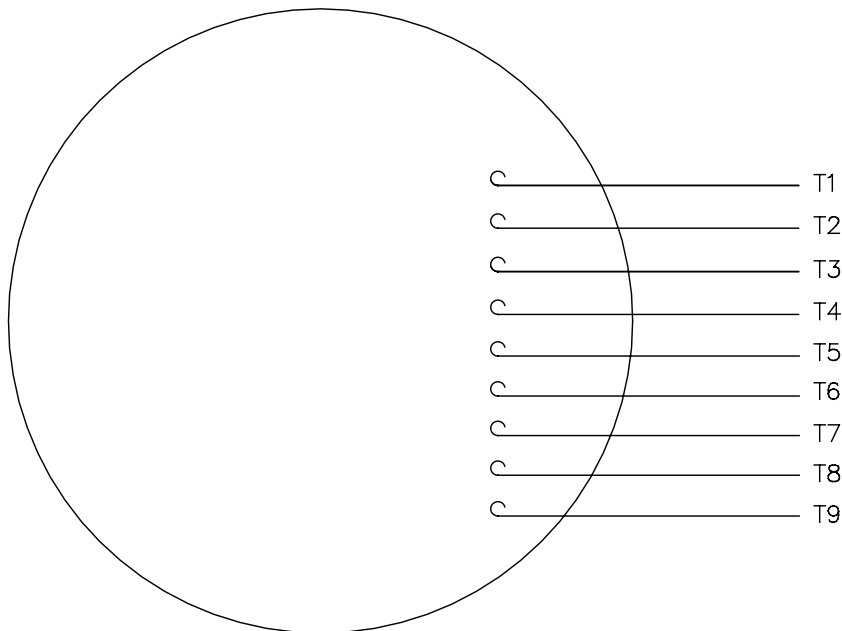
DASH NO.	"C"	"AD"
475	9.44	4.25
500	9.69	4.50
525	9.94	4.75
550	10.19	5.00
575	10.44	5.25
600	10.69	5.50
625	10.94	5.75
650	11.19	6.00
675	11.44	6.25
700	11.69	6.50
725	11.94	6.75
750	12.19	7.00


GASKETS THROUGHOUT

				TOLERANCES UNLESS SPECIFIED		 Regal Beloit America, Inc.			DRAWN PG 7/12/01		
				DEC.	INCHES				CHK		
				.X	±.1				APPD PG 7/12/01		
03	UPDATED SHAFT KEYWAY VIEW	UD 11/27/18		.XX	±.03	TITLE OUTLINE – S56C FRAME "C" FACE MOUNT – TEFC			SCALE 1=2		
02	ADDED DASH NO. 475 TO TABLE (102184.00)	PG 9/19/02		.XXX	±.005				REF		
01	REVISED CALLOUT FOR GD&T	KMM 6/6/02	PG	.XXXX	±.0005	MAT'L. 3 PHASE			FMF		
NO.	REVISION	BY & DATE	CHK	ANG	±1/2°	FINISH			PREV		
THIS DRAWING IN DESIGN AND DETAIL IS OUR PROPERTY AND MUST NOT BE USED EXCEPT IN CONNECTION WITH OUR WORK ALL RIGHTS OF DESIGN AND INVENTION ARE RESERVED THIS IS AN ELECTRONICALLY GENERATED DOCUMENT – DO NOT SCALE THIS PRINT				RFP		CAD FILE 031637		SIZE	DRAWING NO.		REV.
				DIST				B	031637		02

005010-01

VIEW FROM OUTSIDE OF MOTOR AT SWITCH END.



				TOLERANCES UNLESS SPECIFIED		 Regal Beloit America, Inc.			DRAWN RDW 04/12/02		
				DEC.	INCHES				CHK		
				.X	±.1				APPD		
				.XX	±.01				SCALE 1=1		
				.XXX	±.005	TITLE EXTERNAL WIRING DIAGRAM 3 PHASE W/O PROTECTOR			REF FIG.2-51		
A	UPDATED TO REGAL LOGO	SAJ 06/26/15	AJY	.XXXX	±.0005				MAT'L. DECAL - 004014		
NO.	REVISION	BY & DATE	CHK	ANG	±1/2"	FINISH			PREV		
THIS DRAWING IN DESIGN AND DETAIL IS OUR PROPERTY AND MUST NOT BE USED EXCEPT IN CONNECTION WITH OUR WORK ALL RIGHTS OF DESIGN AND INVENTION ARE RESERVED THIS IS AN ELECTRONICALLY GENERATED DOCUMENT - DO NOT SCALE THIS PRINT				RFP 04/12/02		CAD FILE 00501001			SIZE A	DRAWING NO. 005010-01	REV A
				DIST BRF-NLV							



**1051 CHEYENNE AVE.
GRAFTON, WI 53024
PH. 262-377-8810**

CERTIFICATION DATA SHEET

CONN. DIAGRAM: 005010.01

CATALOG #: 102860.00

OUTLINE: 031637-550

MOUNTING: F1 ONLY

WINDING #: TE48415 FR 3 B

TYPICAL MOTOR PERFORMANCE DATA

HP	kW	SYNC. RPM	F.L. RPM	FRAME	ENCLOSURE	KVA CODE	DESIGN
1/2	0.37	1800	1725	S56C	TEFC	L	B

PH	Hz	VOLTS	AMPS	START TYPE	DUTY	INSL	S.F.	AMB°C
3	60	208-230/460	1.9-2/1	ACROSS THE LINE	CONTINUOUS	B3	1.15	40

FULL LOAD EFF:	73	3/4 LOAD EFF:	63.8	1/2 LOAD EFF:	55.5	GTD. EFF		ELEC. TYPE
FULL LOAD PF:	62	3/4 LOAD PF:	56.2	1/2 LOAD PF:	46	66		SQ CAGE IND RUN

F.L. TORQUE	LOCKED ROTOR AMPS	L.R. TORQUE	B.D. TORQUE	F.L. RISE°C
24 OZ-FT	11.9 / 6	95.9 OZ-FT 400 %	100 OZ-FT 417 %	-

SOUND PRESSURE @ 3 FT.	SOUND POWER	ROTOR WK^2	MAX. WK^2	SAFE STALL TIME	STARTS / HOUR	APPROX. MOTOR WGT
60 dBA	70 dBA	0.045 LB-FT^2	0 LB-FT^2	10 SEC.	0	23 LBS.

***** SUPPLEMENTAL INFORMATION *****

DE BRACKET TYPE	ODE BRACKET TYPE	MOUNT TYPE	ORIENTATION	SEVERE DUTY	HAZARDOUS LOCATION	DRIP COVER	SCREENS	PAINT
C-FACE	STANDARD	ROUND	HORIZONTAL	FALSE	NONE	FALSE	NONE	BLUE - LEESON (ENAMEL)

BEARINGS		GREASE	SHAFT TYPE	SPECIAL DE	SPECIAL ODE	SHAFT MATERIAL	FRAME MATERIAL
DE	ODE						
BALL	BALL	MULTEMP SRL	T	NONE	NONE	1144 STRESSPROOF (C-223)	ROLLED STEEL
6203	6203						

THERMO-PROTECTORS				THERMISTORS	CONTROL	SPACE HEATERS
THERMOSTATS	PROTECTORS	WDG RTDs	BRG RTDs			
NONE	NOT	NONE	NONE	NONE	FALSE	NONE VOLTS

*

N

O

T

E

S

INVERTER TORQUE: NONE
INV. HP SPEED RANGE: NONE

ENCODER: NONE
NONE NONE
NONE NONE PPR

BRAKE: NONE NONE
NONE P/N NONE
NONE NONE
FT-LB NONE V NONE Hz



LEESON ELECTRIC CORPORATION

TYPICAL PERFORMANCE CURVE for AC MOTOR

Model No 102860.00Catalog No 102860.00

Curve at

460

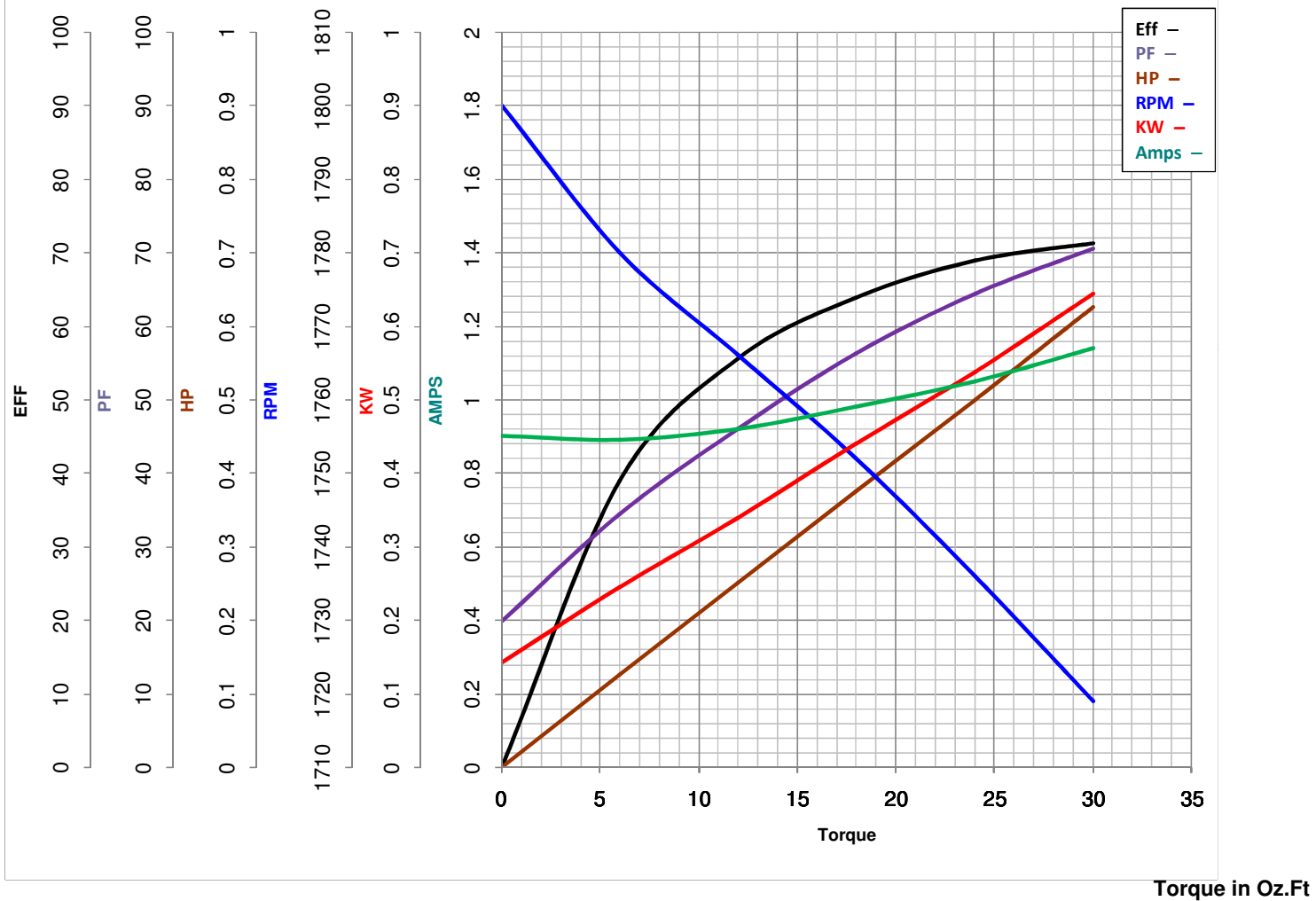
Volts

HP 0.50PHASE 360

HZ

VOLTS 208-230/4600.5

HP

HZ 60RPM 1725FL TORQUE 24 Oz.FtBD TORQUE 100.0 Oz.FtLR TORQUE 95.9 Oz.Ft

WINDING TE48415-3

FL AMPS 1.9-2/1PU TORQUE 91.3 Oz.FtLR AMPS 5.95

Date 5/22/2018