

# PRODUCT INFORMATION PACKET



Model No: 102861.00

Catalog No: 102861.00

General Purpose Motor, 0.50 HP, 3 Ph, 60 Hz, 230/460 V, 1800 RPM, S56C Frame, TENV

Operational at 208-230/460 V @60HZ



Regal and Leeson are trademarks of Regal Rexnord Corporation or one of its affiliated companies.

©2023 Regal Rexnord Corporation, All Rights Reserved. MC017097E



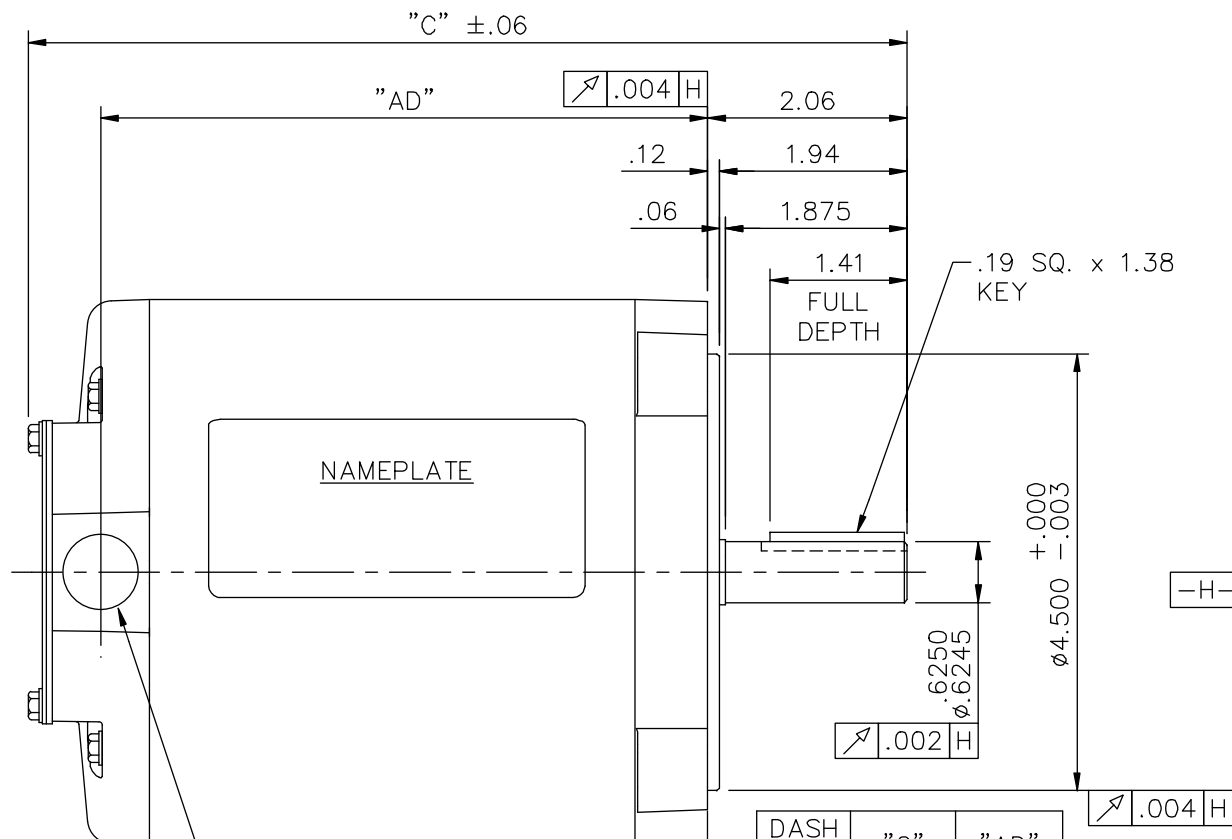


## Nameplate Specifications

Phase	3	Output HP	0.50 Hp
Output KW	0.37 kW	Voltage	230/460 V
Speed	1725 rpm	Service Factor	1.15
Frame	S56C	Enclosure	Totally Enclosed Non Ventilated
Thermal Protection	No Protection	Efficiency	77 %
Ambient Temperature	40 °C	Frequency	60 Hz
Current	1.8/0.90 A	Power Factor	69
Duty	Continuous	Insulation Class	B
Design Code	NO DESIGN CODE	KVA Code	M
Drive End Bearing Size	6203	Opp Drive End Bearing Size	6203
UL	Recognized	CSA	Y
CE	N	IP Code	43
Number of Speeds	1		

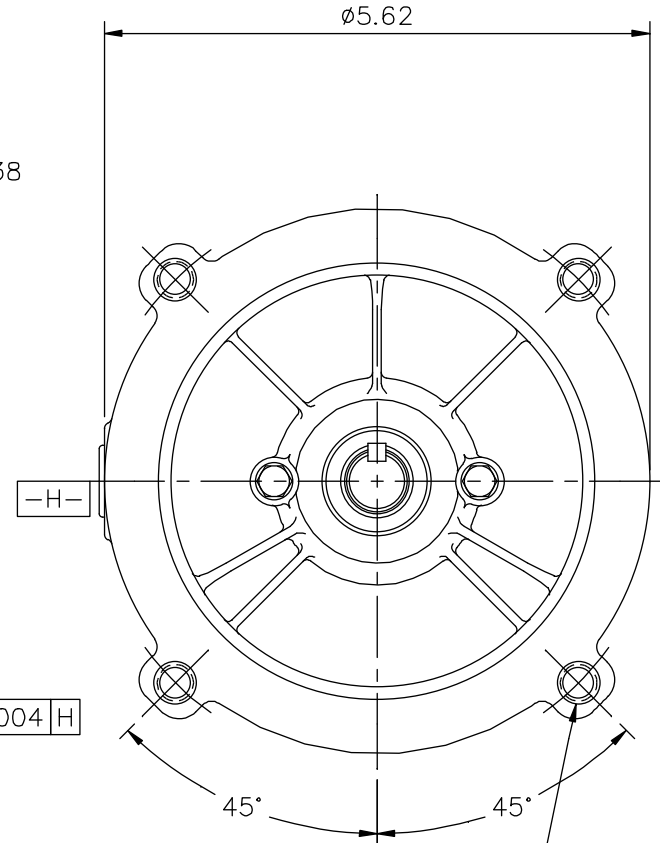
## Technical Specifications

Electrical Type	Squirrel Cage Induction Run	Starting Method	Across The Line
Poles	4	Rotation	Reversible
Resistance Main	9.166 Ohms	Mounting	Round
Motor Orientation	Horizontal	Drive End Bearing	Ball
Opp Drive End Bearing	Ball	Frame Material	Rolled Steel
Shaft Type	NEMA 56	Overall Length	10.06 in
Frame Length	6.00 in	Shaft Diameter	0.625 in
Shaft Extension	1.88 in	Assembly/Box Mounting	F1 ONLY
Outline Drawing	031654-600	Connection Drawing	005010.01




1/2-14 NPT  
CONDUIT HOLE  
(PLUGGED)

DASH NO.	"C"	"AD"
450	8.56	5.75
475	8.81	6.00
500	9.06	6.25
525	9.31	6.50
550	9.56	6.75
575	9.81	7.00
600	10.06	7.25
625	10.31	7.50
650	10.56	7.75
675	10.81	8.00
750	11.56	8.75



3/8-16 UNC 2B TAP x .56 DEEP  
(4) REQ'D. ON A Ø5.875 B.C.

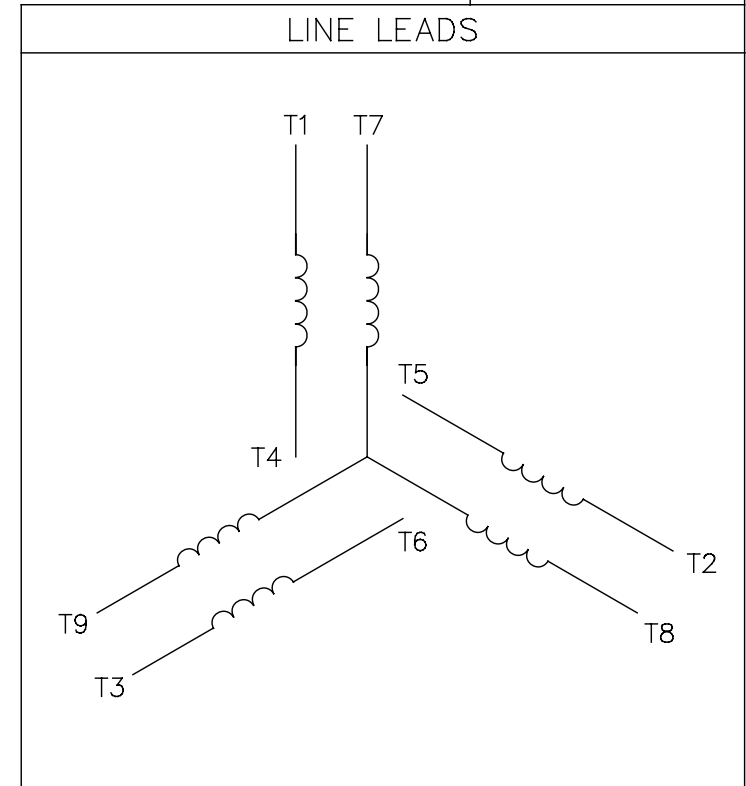
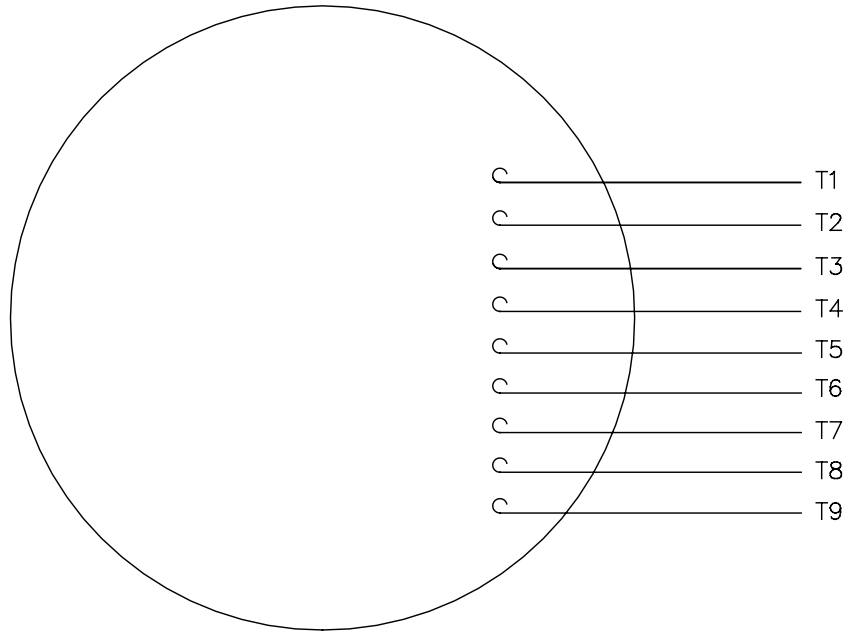
GASKETS THROUGHOUT

			TOLERANCES UNLESS SPECIFIED		 <p>ELECTRIC MOTORS GEARMOTORS AND DRIVES</p>	DRAWN PG 9/28/01	
			DEC.	INCHES		CHK	
			.X	±.1		APPD	
			.XX	±.03		SCALE 1=2	
			.XXX	±.005		REF 031078	
01	REVISED CALLOUT FOR GD&T	KMM 6/6/02	.XXXX	±.0005	TITLE	OUTLINE – S56C FRAME "C" FACE MOUNT – TENV	
			NO.	REVISION	BY & DATE	CHK	ANG
					RFP	CAD FILE 031654	
					DIST	SIZE A	
					DRAWING NO. 031654		REV. 01


THIS DRAWING IN DESIGN AND DETAIL IS OUR PROPERTY AND MUST NOT BE USED EXCEPT  
IN CONNECTION WITH OUR WORK ALL RIGHTS OF DESIGN AND INVENTION ARE RESERVED  
THIS IS AN ELECTRONICALLY GENERATED DOCUMENT – DO NOT SCALE THIS PRINT

005010-01

VIEW FROM OUTSIDE OF MOTOR AT SWITCH END.



VOLTAGE	L1	L2	L3	JOIN & INSULATE
HIGH	T1	T2	T3	(T4,T7) (T5,T8) (T6,T9)
LOW	T1,T7	T2,T8	T3,T9	T4,T5,T6

				TOLERANCES UNLESS SPECIFIED		 <b>Regal Beloit America, Inc.</b>			DRAWN RDW 04/12/02		
				DEC.	INCHES				CHK		
				.X	±.1				APPD		
				.XX	±.01				SCALE 1=1		
				.XXX	±.005	TITLE EXTERNAL WIRING DIAGRAM 3 PHASE W/O PROTECTOR			REF FIG.2-51		
A	UPDATED TO REGAL LOGO	SAJ 06/26/15	AJY	.XXXX	±.0005				MAT'L DECAL - 004014		
NO.	REVISION	BY & DATE	CHK	ANG	±1/2"	FINISH			PREV		
THIS DRAWING IN DESIGN AND DETAIL IS OUR PROPERTY AND MUST NOT BE USED EXCEPT IN CONNECTION WITH OUR WORK ALL RIGHTS OF DESIGN AND INVENTION ARE RESERVED THIS IS AN ELECTRONICALLY GENERATED DOCUMENT - DO NOT SCALE THIS PRINT			RFP 04/12/02		CAD FILE 00501001			SIZE A	DRAWING NO. 005010-01		REV. A
			DIST BRF-NLV								



# CERTIFICATION DATA SHEET

**1051 CHEYENNE AVE.  
GRAFTON, WI 53024  
PH. 262-377-8810**

**CONN. DIAGRAM:** 005010.01

**CATALOG #:** 102861.00

**OUTLINE:** 031654-600

**MOUNTING:** F1 ONLY

**WINDING #:** TE48453 NR 3 D

## TYPICAL MOTOR PERFORMANCE DATA

HP	kW	SYNC. RPM	F.L. RPM	FRAME	ENCLOSURE	KVA CODE	DESIGN
1/2	0.37	1800	1725	S56C	TENV	M	NO DESIGN CODE

PH	Hz	VOLTS	AMPS	START TYPE	DUTY	INSL	S.F.	AMB°C
3	60	208-230/460	1.8-1.8/.9	ACROSS THE LINE	CONTINUOUS	B3	1.15	40

<b>FULL LOAD EFF:</b>	77	<b>3/4 LOAD EFF:</b>	73.8	<b>1/2 LOAD EFF:</b>	66.9	<b>GTD. EFF</b>		<b>ELEC. TYPE</b>
<b>FULL LOAD PF:</b>	69	<b>3/4 LOAD PF:</b>	60.2	<b>1/2 LOAD PF:</b>	47.5	0		SQ CAGE IND RUN

F.L. TORQUE	LOCKED ROTOR AMPS	L.R. TORQUE	B.D. TORQUE	F.L. RISE°C
24 OZ-FT	12.6 / 6.3	91.4 OZ-FT 381 %	98 OZ-FT 408 %	-

SOUND PRESSURE @ 3 FT.	SOUND POWER	ROTOR WK^2	MAX. WK^2	SAFE STALL TIME	STARTS / HOUR	APPROX. MOTOR WGT
0 dBA	10 dBA	0.053 LB-FT^2	0 LB-FT^2	10 SEC.	0	0 LBS.

## \*\*\* SUPPLEMENTAL INFORMATION \*\*\*

DE BRACKET TYPE	ODE BRACKET TYPE	MOUNT TYPE	ORIENTATION	SEVERE DUTY	HAZARDOUS LOCATION	DRIP COVER	SCREENS	PAINT
C-FACE	STANDARD	ROUND	HORIZONTAL	FALSE	NONE	FALSE	NONE	BLUE - LEESON (ENAMEL)

BEARINGS		GREASE	SHAFT TYPE	SPECIAL DE	SPECIAL ODE	SHAFT MATERIAL	FRAME MATERIAL
DE	ODE						
BALL	BALL	MULTEMP SRL	T	NONE	NONE	1144 STRESSPROOF (C-223)	ROLLED STEEL
6203	6203						

THERMO-PROTECTORS				THERMISTORS	CONTROL	SPACE HEATERS
THERMOSTATS	PROTECTORS	WDG RTDs	BRG RTDs			
NONE	NOT	NONE	NONE	NONE	FALSE	NONE VOLTS

\*

N

O

T

E

S

**INVERTER TORQUE:** NONE  
**INV. HP SPEED RANGE:** NONE

**ENCODER:** NONE  
NONE NONE  
NONE NONE PPR

**BRAKE:** NONE NONE  
NONE P/N NONE  
NONE NONE  
FT-LB NONE V NONE Hz

## Data Sheet

Date: 1/24/2018

102861.00



Data @ 460 V

## Motor Load Data

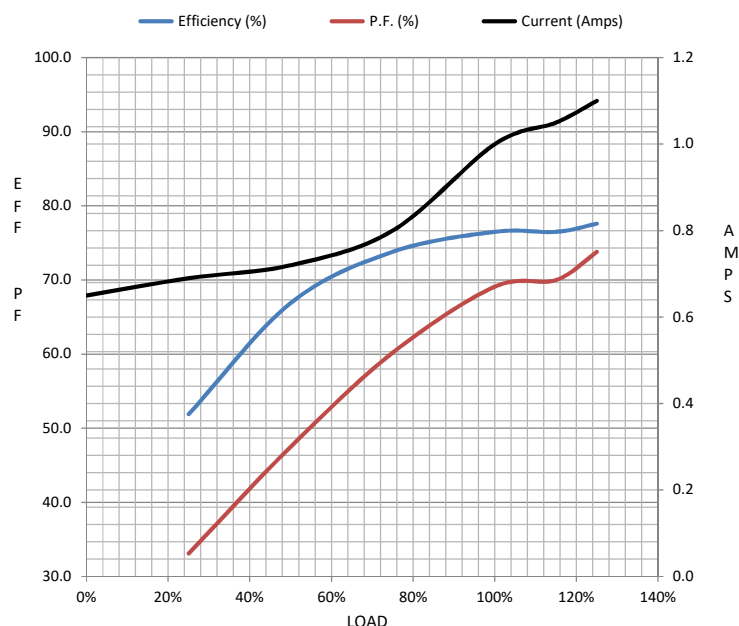
Load	0%	25%	50%	75%	100%	115%	125%	LR	
Current (Amps)	0.65	0.69	0.72	0.80	1.00	1.05	1.10	6.3	
Torque (ft-lb)	0.00	94.5	186	289	383	447	450	1,459	
RPM	1800	1787	1774	1760	1747	1,735	1737	0	
Efficiency (%)		51.9	66.9	73.8	76.5	76.5	77.6		
P.F. (%)	22.8	33.1	47.5	60.2	69.1	70.0	73.8	0.0	

## Motor Speed Data

	LR	Pull-Up	BD	Rated	Idle
Speed (RPM)	0	900	1656	1747	1800
Current (Amps)	6.3	5.8	3.8	1.00	0.65
Torque (ft-lb)	1,459	1,213	1,565	383	0.00

## Information Block

HP	0.5			
Sync. RPM	1800			
Frame	48			
Enclosure	TENV			
Construction	TTR			
Voltage	208-230/460	V		
Frequency	60	Hz		
Design	B			
LR Code letter	M			
Service Factor	1.0			
Temp Rise @ FL	81	° C		
Duty	CONT			
Ambient	40	° C		
Elevation	1,000	feet		
Rotor/Shaft wk²	0.05	Lb-Ft²		
Ref Wdg	TE48453 NR			
Sound Pressure @ 1M	0	dBA		
VFD Rating	NONE			
Outline Dwg	031654-600			
Conn. Diag	005010.01			
Additional Specifications:				
0				
0				
EQUIV CKT (OHMS / PHASE)				
R1	R2	X1	X2	Xm
0.0000	0.0000	0.0000	0.0000	0.0000



## Speed - Torque Curve

