

Weatherproof Device Covers & Boxes

The Leviton offering of Weatherproof Covers & Boxes comprises both 1- and 2-gang configurations that comply with the National Electric Code® (2017) Section 406.9 for weatherproof enclosures in damp and wet locations.



Weatherproof Device Covers



Key Features

- Complies with NEC® 2017 Section 406.9(A) for weatherproof enclosures in damp locations
- Heavy-duty gasket provides a weatherproof seal which protects from moisture and adds to ease of installation
- Select device covers include three easy-to-install molded adapter plates for use with Toggle Switches, Duplex Receptacles, Decora®/GFCI and Single Receptacle devices
- Safety lockout feature to prevent unauthorized use; available on some models

Ordering Information

Gang	Device Type	Mount*	Color	Metallic	Plastic
Single-Gang	Switch	Vertical or Horizontal	Gray	WM1S-GY	WP1S-GY
	Duplex Receptacle	Horizontal, Oversized	Gray	—	4986-GY
		Vertical or Horizontal	Gray	WM1D-SGY	WP1D-GY
		Horizontal	Gray	—	4976-GY
		Horizontal	White	—	4976-W
		Horizontal, FS Box Mount	Gray	—	4976-FS
		Vertical	Gray	—	4978-GY
		Vertical	White	—	4978-W
	Duplex and Single Receptacle; Includes Inserts for Decora®/GFCI	Horizontal	Gray	WM1H-GY	—
		Vertical	Gray	WM1V-GY	—
	Decora®/GFCI Receptacle	Horizontal	Gray	—	4996-GY
		Horizontal	White	—	4996-W
		Horizontal	Black	—	4996-E
		Vertical	Gray	—	4998-GY
		Vertical	White	—	4998-W
		Horizontal, FS Box Mount	Gray	WM1HF-GY	—
Vertical, FS Box Mount		Gray	WM1VF-GY	—	
Single Receptacle; 1.406" Hole	Vertical	Gray	—	4979-GY	
Single Receptacle; 1.60" Hole	Vertical	Gray	—	4980-GY	
Two-Gang	Switch	Vertical or Horizontal	Gray	WM2S-GY	WP2S-GY
	Duplex and Single Receptacle; Includes Inserts for Decora®/GFCI	Vertical or Horizontal	Gray	WM2V-GY	WP2V-GY
	Switch & GFCI	Vertical or Horizontal	Gray	WM2SG-GY	WP2SG-GY
	Switch & Duplex Receptacle	Vertical or Horizontal	Gray	WM2SD-GY	WP2SD-GY

*Device Mount unless otherwise specified

Weatherproof Outlet Box Hoods (While-In-Use Covers)



Key Features

- Compliant with NEC® 2017 Section 406.9(B)(1)
- Safety lockout feature to prevent unauthorized use
- Pre-installed weatherproof gasket features custom fit inserts allowing for an easy to use installation
- Extra duty models meet or exceed the most stringent impact resistance tests required in UL 514D for Extra Duty Outlet Box Hoods, ensuring maximum safety in abusive environments

Ordering Information

Gang	Device Type	Mount*	Color	Material	Catalog #
Single-Gang	Extra Duty; Includes Inserts for Single, Duplex and Decora/GFCI Receptacles	Vertical	Gray	Metal	IUM1V-GY
		Horizontal	Gray	Metal	IUM1H-GY
		Vertical	Gray	Plastic	5980-UGY
			Clear	Plastic	5980-UCL
		Horizontal	Gray	Plastic	5981-UGY
			Clear	Plastic	5981-UCL
Two-Gang	Extra Duty; Includes Inserts for Duplex and Decora/GFCI Receptacles	Vertical	Gray	Metal	IUM2V-GY
		Vertical	Gray	Plastic	5982-UGY
			Clear	Plastic	5982-UCL

*Device Mount unless otherwise specified

Weatherproof Blank Plates

Key Features

- Equipped with heavy-duty weatherproof gasket to seal out moisture



Ordering Information

Gang	Color	Catalog #
Single-Gang	Gray	WM1B-GY
Two-Gang	Gray	WM2B-GY

Weatherproof Boxes

Key Features

- Constructed of heavy duty die-cast aluminum
- Includes ground screw, mounting hardware and inserts to cover unused openings to prevent insects and debris from entering the box



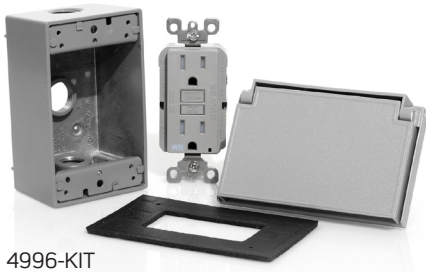
Ordering Information

Gang	Description	Color	Catalog #
Single-Gang	Three 1/2" Diameter Outlets	Gray	1GM53-GY
	Three 3/4" Diameter Outlets	Gray	1GM73-GY
Two-Gang	Three 1/2" Diameter Outlets	Gray	2GM53-GY
	Five 1/2" Diameter Outlets	Gray	2GM55-GY
	Three 3/4" Diameter Outlets	Gray	2GM73-GY
	Five 3/4" Diameter Outlets	Gray	2GM75-GY

Weatherproof Cover Kits

Key Features

- Some of our most popular device covers, box hoods, and boxes collected together in simple, easy-to-install packages
- Compliant with NEC® 2017 Section 406.9 for weatherproof enclosures in damp and wet locations



4996-KIT



WM1SC-2GY



IUM1H-KRG



EVCVM-50

Ordering Information

Gang	Description	Catalog #
Single-Gang	One WM1S-GY Weatherproof Switch Cover, Gray; Weatherproof Gasket; Mounting Screws; one CS120-2GY 20 A, 120/277 VAC Switch, Gray	WM1SC-2GY
	One GFWT1-GY 15 A, 125 V, Weather- & Tamper-Resistant GFCI Receptacle, Gray; one 4996-GY, Decora/GFCI Receptacle Weather-Resistant Cover with Self-Closing Lid, Gray; one 1GM53-GY Die-Cast Weatherproof Box	4996-KIT
	One IUM1V-GY Extra-Duty Vertical Outlet Box Hood with Pre-Installed Weatherproof Gasket one GFWT1-GY 15 A, 125 V GFCI Receptacle, Weather & Tamper-Resistant, Gray	IUM1V-KRG
	Same items as IUM1V-KRG (listed above) with addition of one 1GM53-GY, Die-Cast Weatherproof Box and Mounting Hardware	IUM1V-KBG
	One IUM1H-GY Extra-Duty Horizontal Outlet Box Hood with Pre-Installed Weatherproof Gasket one GFWT1-GY 15 A, 125 V, GFCI Receptacle, Weather- & Tamper-Resistant	IUM1H-KRG
	Same items as IUM1H-KRG (listed above) with addition of one 1GM53-GY, Die-Cast Weatherproof Box and Mounting Hardware	IUM1H-KBG
	One 1450W Heavy Duty/EV Grade, Weather-Resistant EV Power Receptacle, Pre-Assembled in Outdoor Metal Cover, Gray	EVCVM-50



Visit our Website at:

www.leviton.com/weatherproofcovers

email: commercial@leviton.com

Q-1015I

101625

Leviton Manufacturing Co., Inc.

201 N Service Rd, Melville, NY 11747

Telephone: 1-800-323-8920 • FAX: 1-800-832-9538

Tech Line: 1-800-824-3005 (M-F 8AM-10PM; Sat 9AM-7PM; Sun 9AM-5PM)

© 2024 Leviton Manufacturing Co., Inc. All rights reserved.