

PRODUCT INFORMATION PACKET

Model No: 080T11FH5512
Catalog No: R391
3/4,1200,TEFC,80D,3/60/230/460
TEFC



Regal and Marathon are trademarks of Regal Beloit Corporation or one of its affiliated companies.

©2018 Regal Beloit Corporation, All Rights Reserved. MC017097E





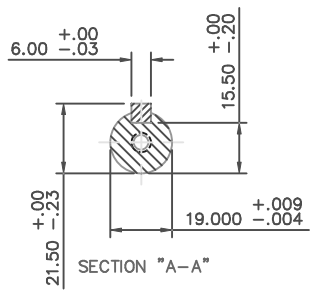
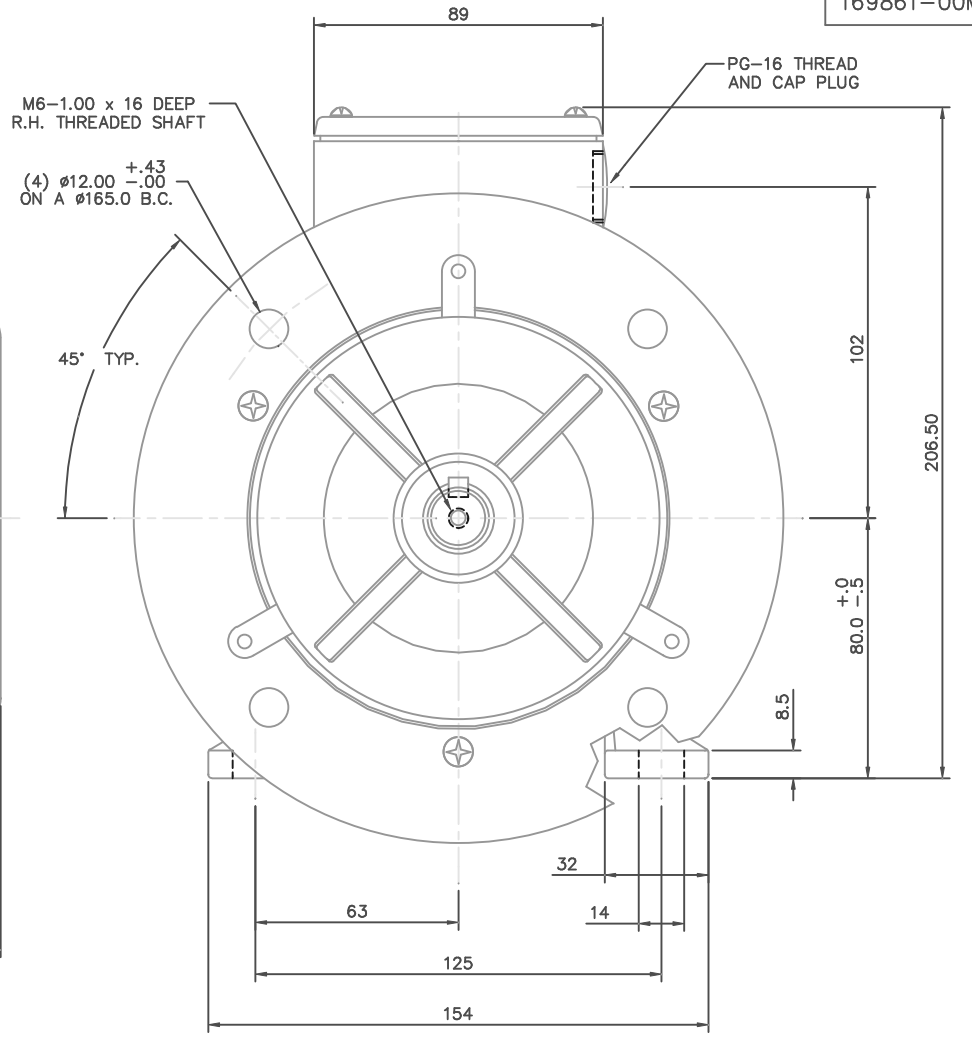
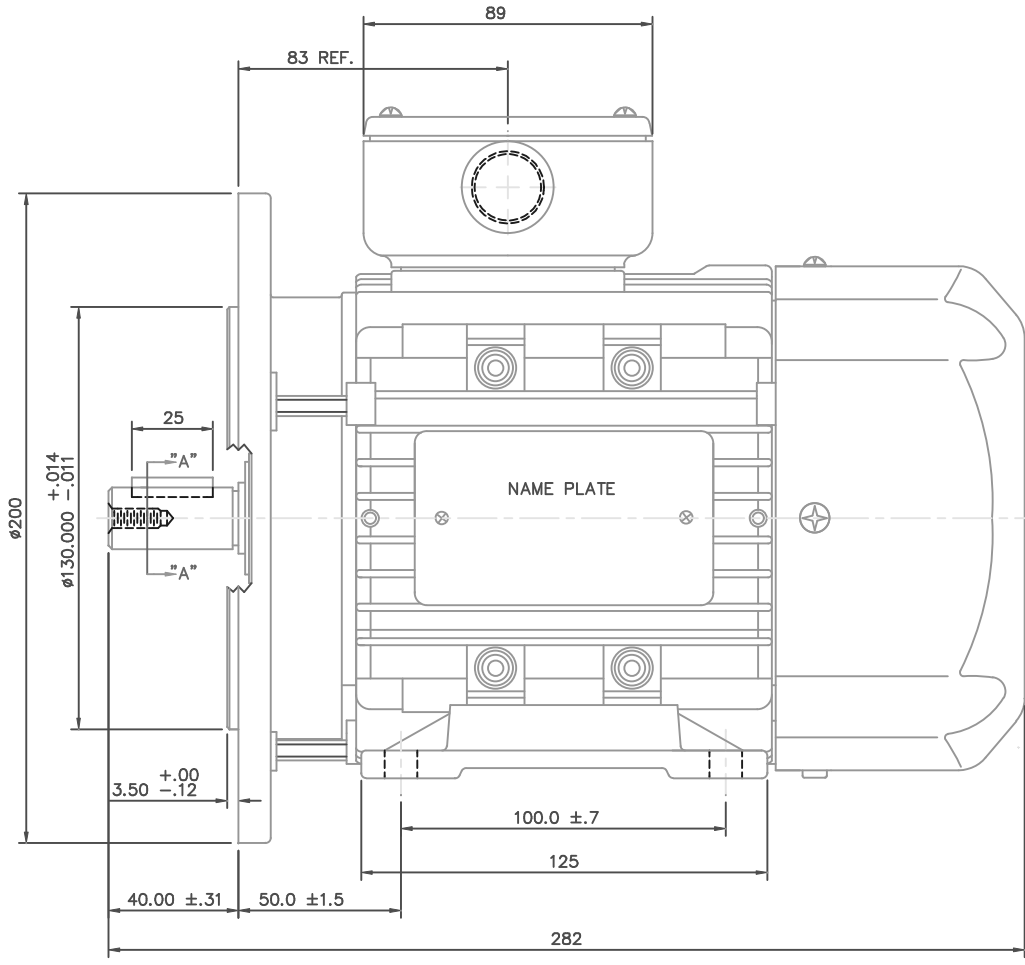
Nameplate Specifications

Output HP	0.75 Hp	Output KW	0.56 kW
Frequency	60 Hz	Voltage	230/460 V
Current	2.7/1.35 A	Speed	1130 rpm
Service Factor	1.15	Phase	3
Efficiency	72 %	Duty	CONTINUOUS
Insulation Class	F	Design Code	B
KVA Code	H	Frame	80
Enclosure	TEFC	Overload Protector	NOT
Ambient Temperature	40 °C	Drive End Bearing Size	6204
Opp Drive End Bearing Size	6204	UL	Recognized
CSA	Y	CE	Y
IP Code	55		

Technical Specifications

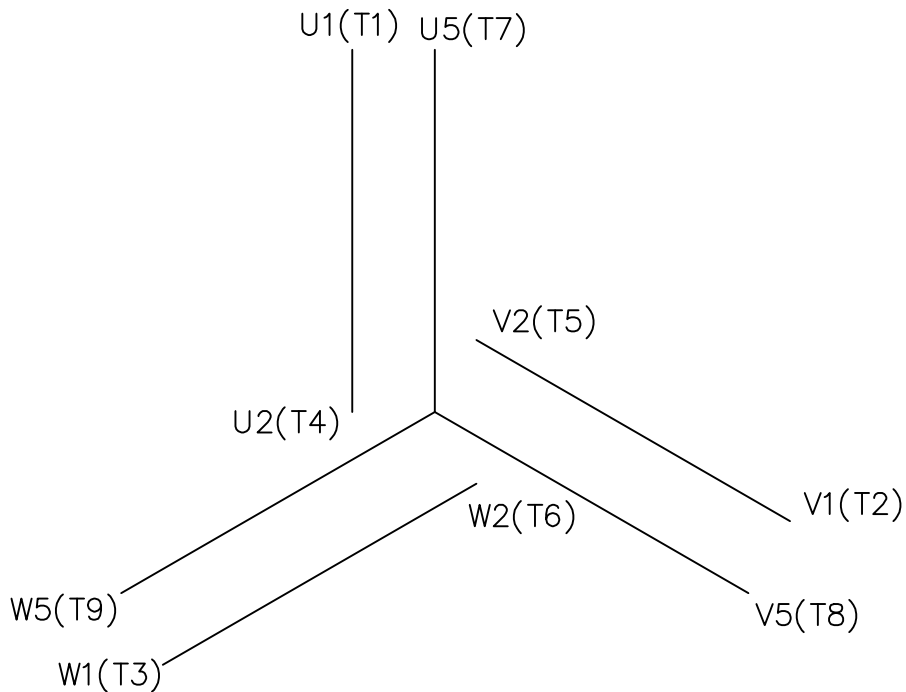
Electrical Type	SQ CAGE INV RATED	Starting Method	LINE OR INVERTER
Poles	6	Rotation	REV
Mounting	RIGID	Motor Orientation	HORIZONTAL
Drive End Bearing	BALL	Opp Drive End Bearing	BALL
Frame Material	ALUMINUM	Shaft Type	STANDARD IEC
Overall Length	11.1 in	Shaft Diameter	0.75 in
Shaft Extension	1.57 in	Assembly/Box Mounting	F3
Outline Drawing	16986900ME	Connection Diagram	00546501ME

This is an uncontrolled document once printed or downloaded and is subject to change without notice. Date Created: 04/05/2018



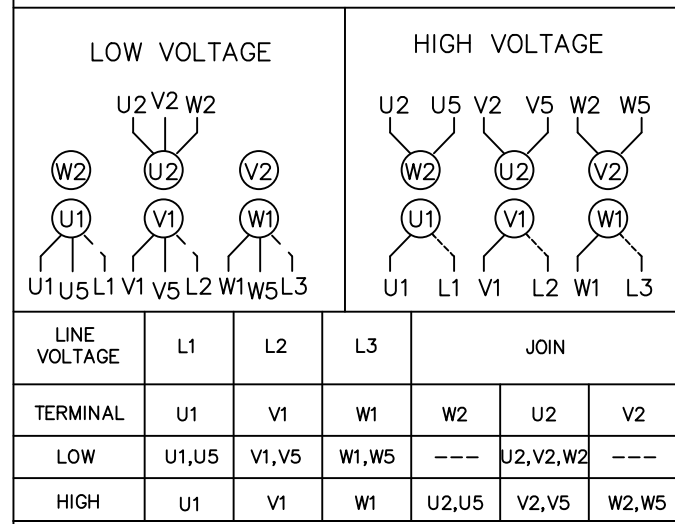
NO.		REVISION	BY & DATE	CHK	ANG	±1/2"	FINISH	PREV			
THIS DRAWING IN DESIGN AND DETAIL IS OUR PROPERTY AND MUST NOT BE USED EXCEPT IN CONNECTION WITH OUR WORK. ALL RIGHTS OF DESIGN AND INVENTION ARE RESERVED. THIS IS AN ELECTRONICALLY GENERATED DOCUMENT - DO NOT SCALE THIS PRINT				RFP			CAD FILE	16986900me	SIZE	DRAWING NO.	REV.
				DIST					B	169861-00ME	

TOLERANCES UNLESS SPECIFIED		MARATHON ELECTRIC		DRAWN CTO 07-07-2004	
DEC.	INCHES			CHK	
.X	±.1	TITLE		APPD	SCALE 1=1.5
.XX	±.03	METRIC OUTLINE, IMB35		REF	OSVC-300-552
.XXX	±.005	IEC-80 FRAME TEFC RIGID W/B5 FLANGE		FMF	
.XXXX	±.0005	MAT'L		PREV	
		ALUMINUM			

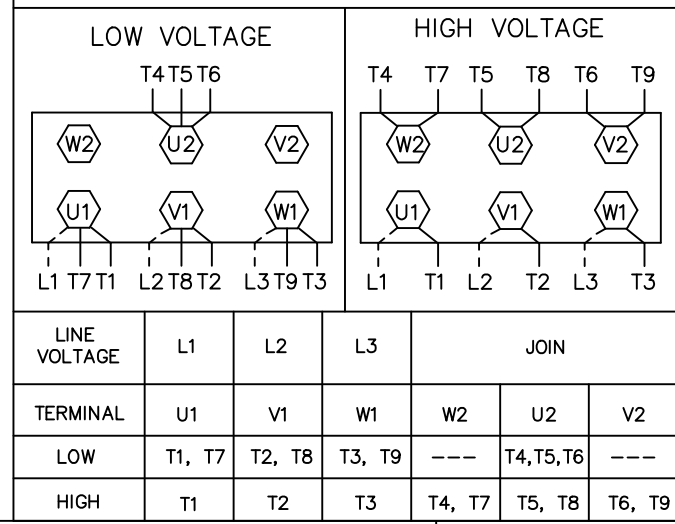


REF. DECAL (IEC) 080644
REF. DECAL (NEMA) 080446

IEC MARKINGS



NEMA MARKINGS



				TOLERANCES UNLESS SPECIFIED			DRAWN	JGO 3/10/04		
				DEC.	INCHES		CHK	SB 02-17-2010		
				.X	±.1		APPD	MJS 02-17-2010		
				.XX	±.01		SCALE	1=1		
				.XXX	±.005		REF			
				.XXXX	±.0005	MAT'L.	IEC/NEMA MARKINGS	FMF		
NO.	REVISION	BY & DATE	CHK	ANG	±1/2'	FINISH		PREV		
THIS DRAWING IN DESIGN AND DETAIL IS OUR PROPERTY AND MUST NOT BE USED EXCEPT IN CONNECTION WITH OUR WORK ALL RIGHTS OF DESIGN AND INVENTION ARE RESERVED THIS IS AN ELECTRONICALLY GENERATED DOCUMENT - DO NOT SCALE THIS PRINT				RFP	02-17-2010	CAD FILE	00546501ME	SIZE	DRAWING NO.	REV.
				DIST				A	005465ME-01	

