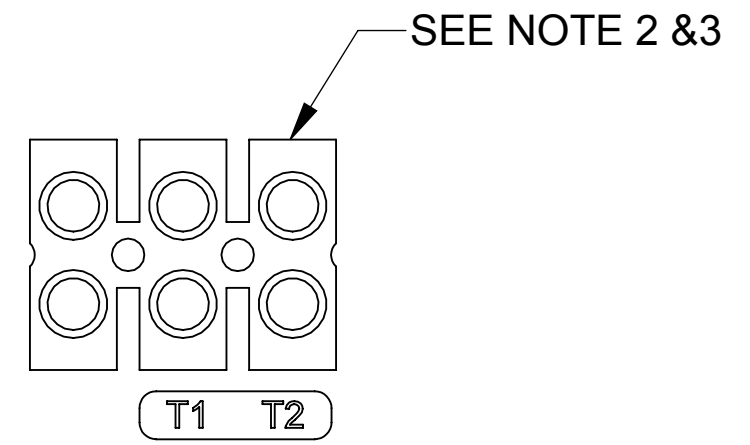
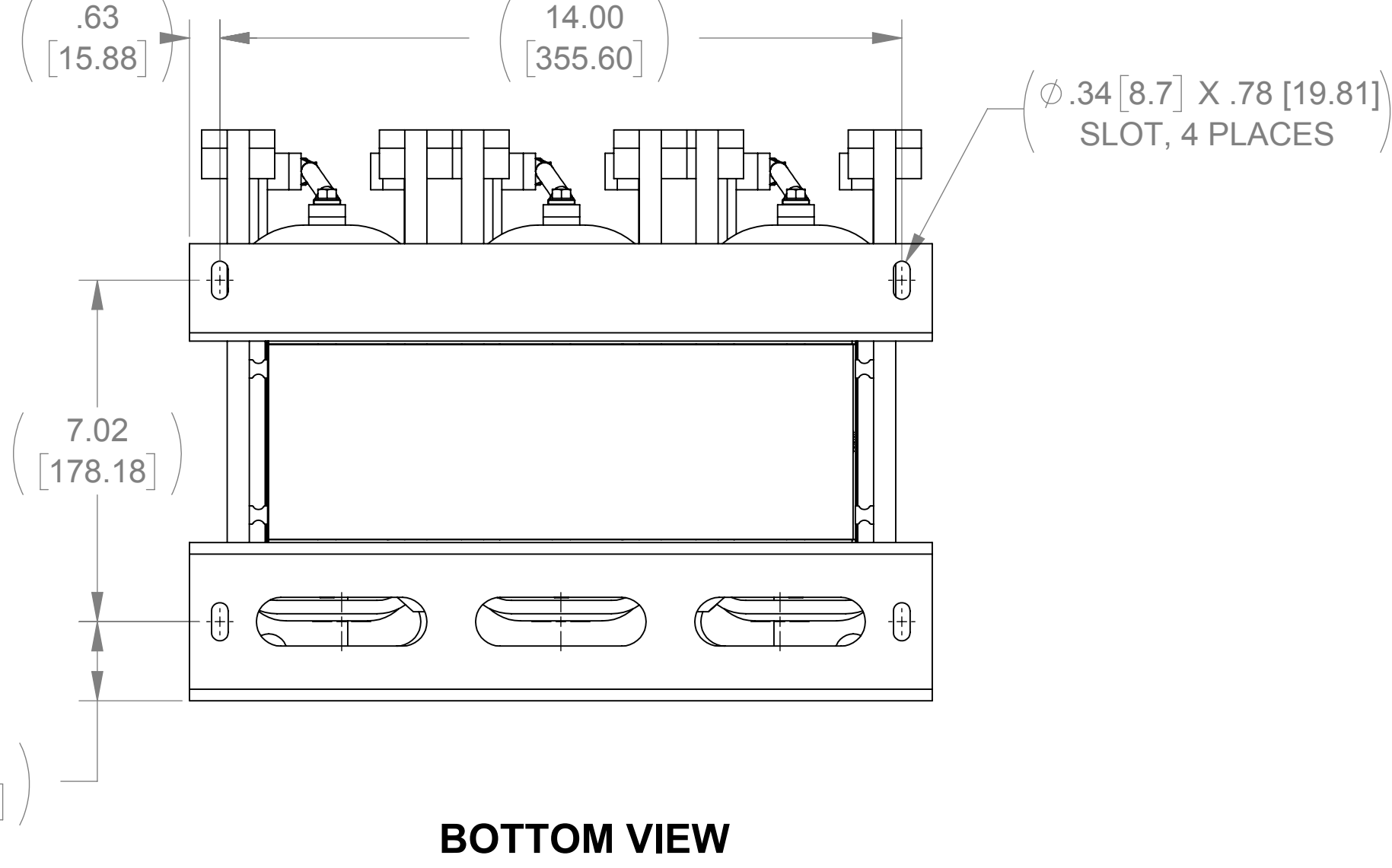
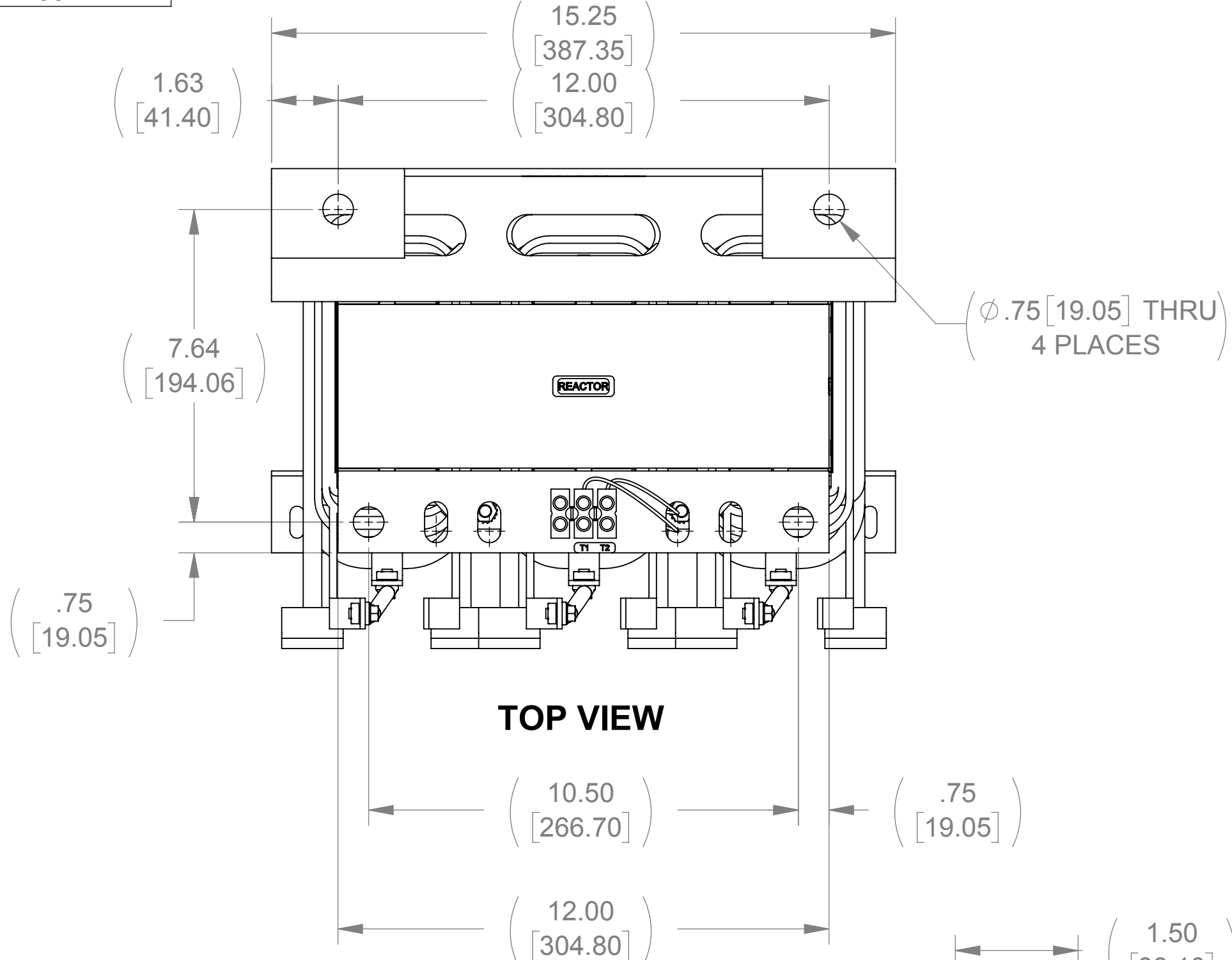
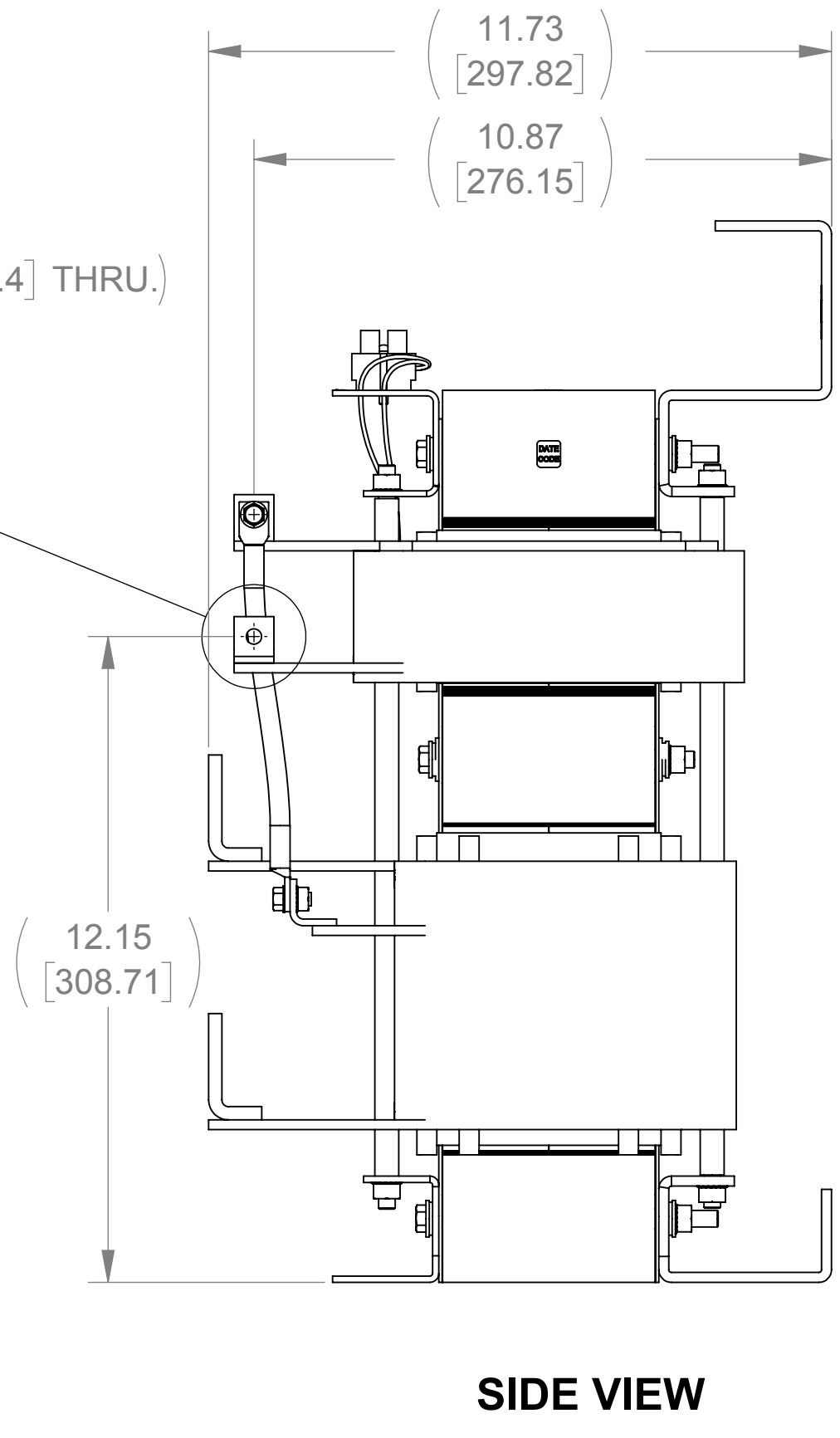
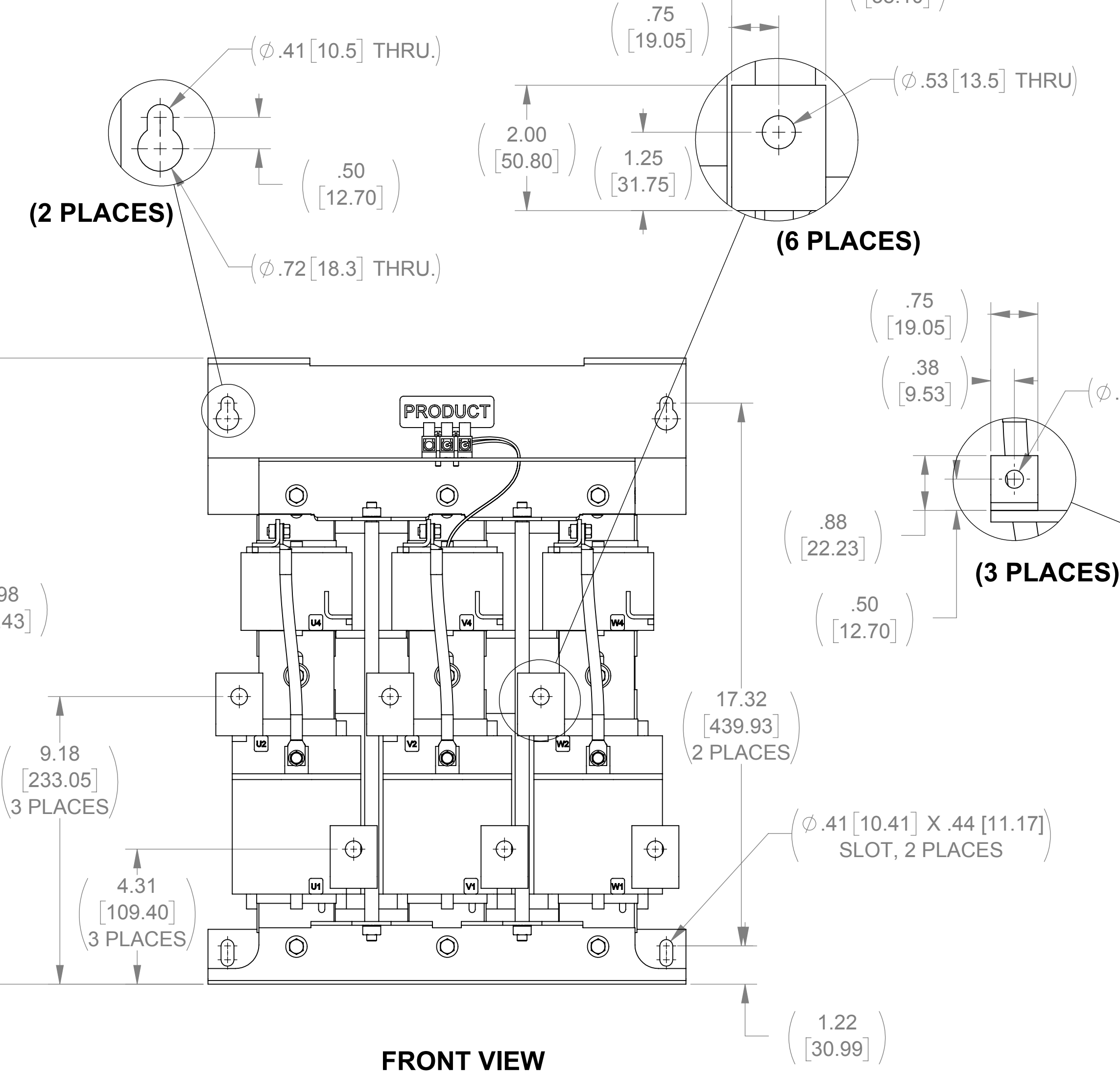


APPROX. WEIGHT (LBS)
233

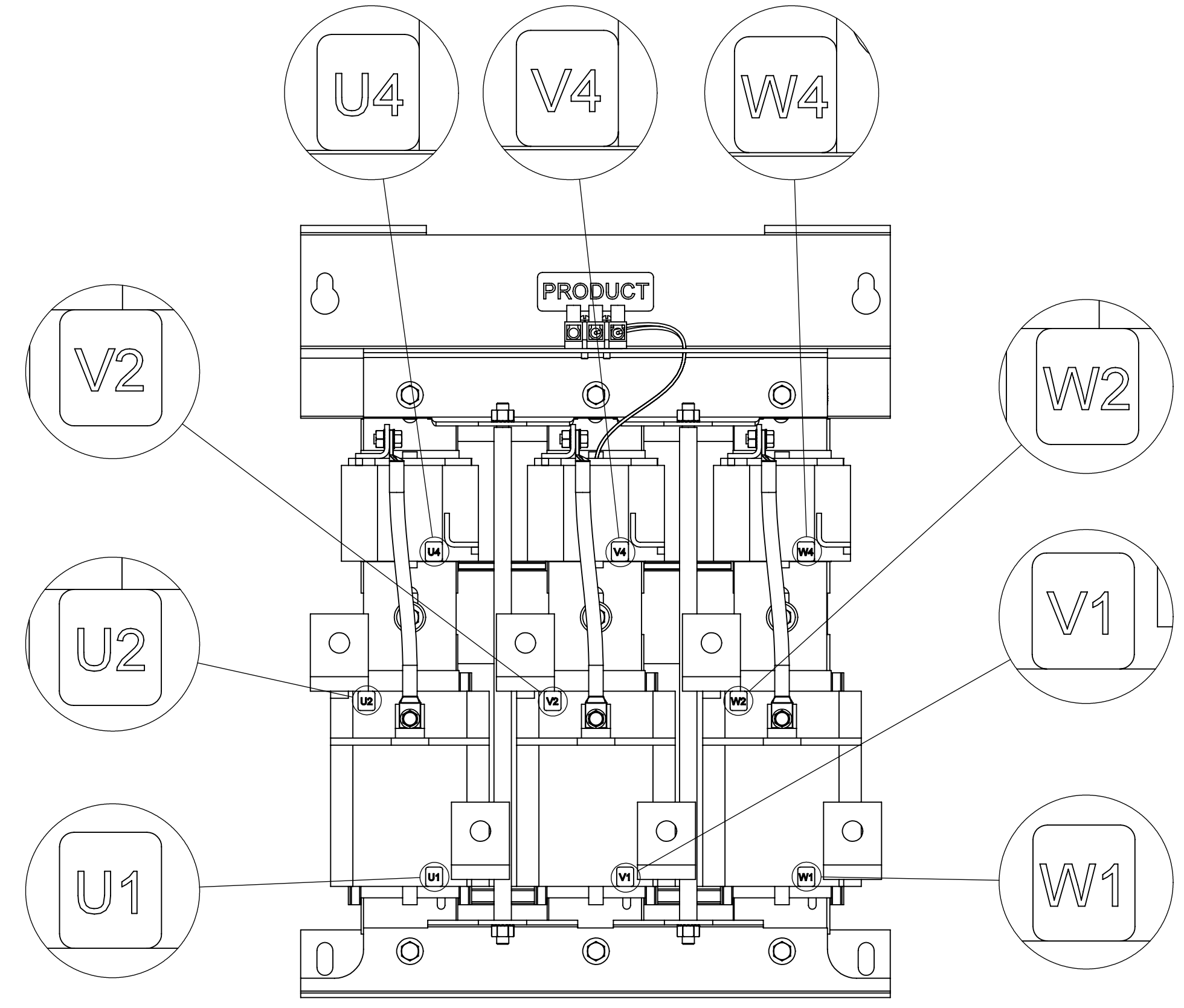
ECO No	DESCRIPTION	REV BY	DATE
M9814	REPLACED CAPPANEL-557 WITH CAPPANEL-557C	KV	09/14/16



CUSTOMER CONNECTION DETAIL VIEW (THERMAL)



SIDE VIEW



CUSTOMER CONNECTION DETAIL VIEW

NOTES:

1. FILTER REQUIRES CAPPANEL-557C (QTY. 1), CONTACTOR-067 (QTY. 1), CONTACTOR-035 (QTY. 1), AND TRANSIENT-001 (QTY. 1).
2. TERMINAL SCREW TIGHTENING TORQUE: 16 IN/LBS
3. WIRE RANGE: 4-14 AWG.

THE COMPONENT, PART OR ASSEMBLY DESCRIBED IN THIS DOCUMENT MUST COMPLY WITH THE EU (EUROPEAN UNION) DIRECTIVE RoHS2		MATERIAL		CONFIDENTIAL AND PROPRIETARY INFORMATION THIS DOCUMENT CONTAINS CONFIDENTIAL AND PROPRIETARY INFORMATION OF MTE CORPORATION AND MAY NOT BE USED, COPIED OR DISCLOSED TO OTHERS EXCEPT WITH THE AUTHORIZED WRITTEN PERMISSION OF MTE CORPORATION	
CONTAINS <0.1% OF ANY SVHC BY WEIGHT PER REACH REGULATION				DESCRIPTION	
UNLESS OTHERWISE SPECIFIED DIMENSIONS ARE IN INCHES [MM] TOLERANCES ARE:		DRAWN JS DATE 05/22/12		MATRIX AP 165A 480V 60HZ OPEN PANEL CONTACTOR 002 OPTION	
ANGLES: ± 1 °		CHECKED JM DATE 09/19/16		SIZE D DWG No. CD MAPP0165D002 REV 05	
1 PLACE .X: ± .1 [2.5]		APPROVED JM DATE 09/19/16		SCALE 1:3	
2 PLACE .XX: ± .03 [0.76]				SHEET 1 OF 1	
3 PLACE .XXX: ± .010 [0.254]					



N83 W13330 Leon Road
Menomonee Falls, WI 53051 USA
800.455.4683
262.253.8200