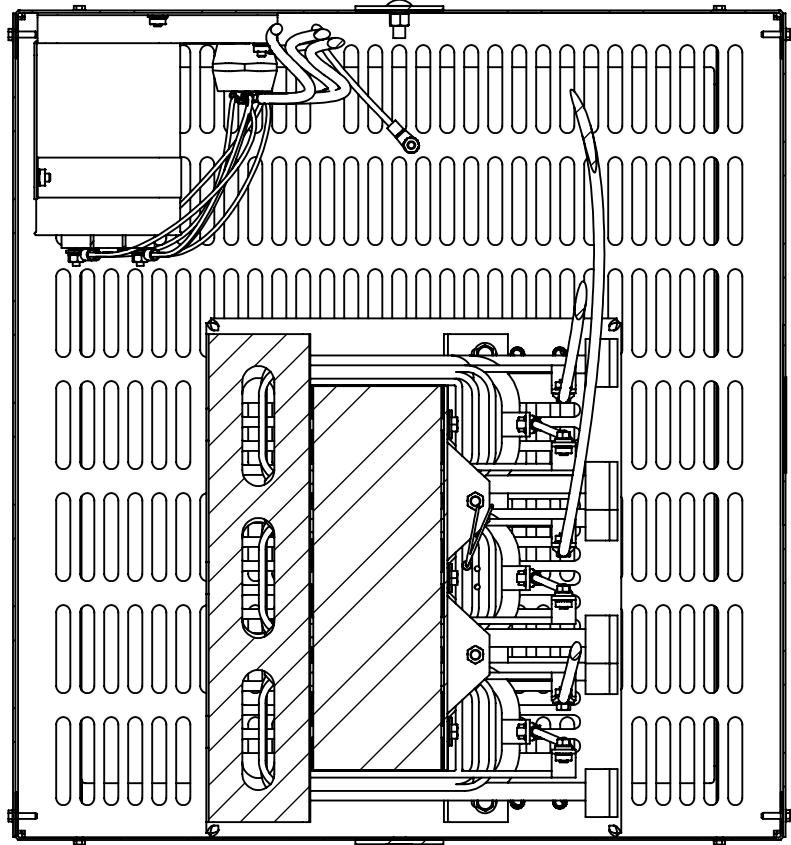
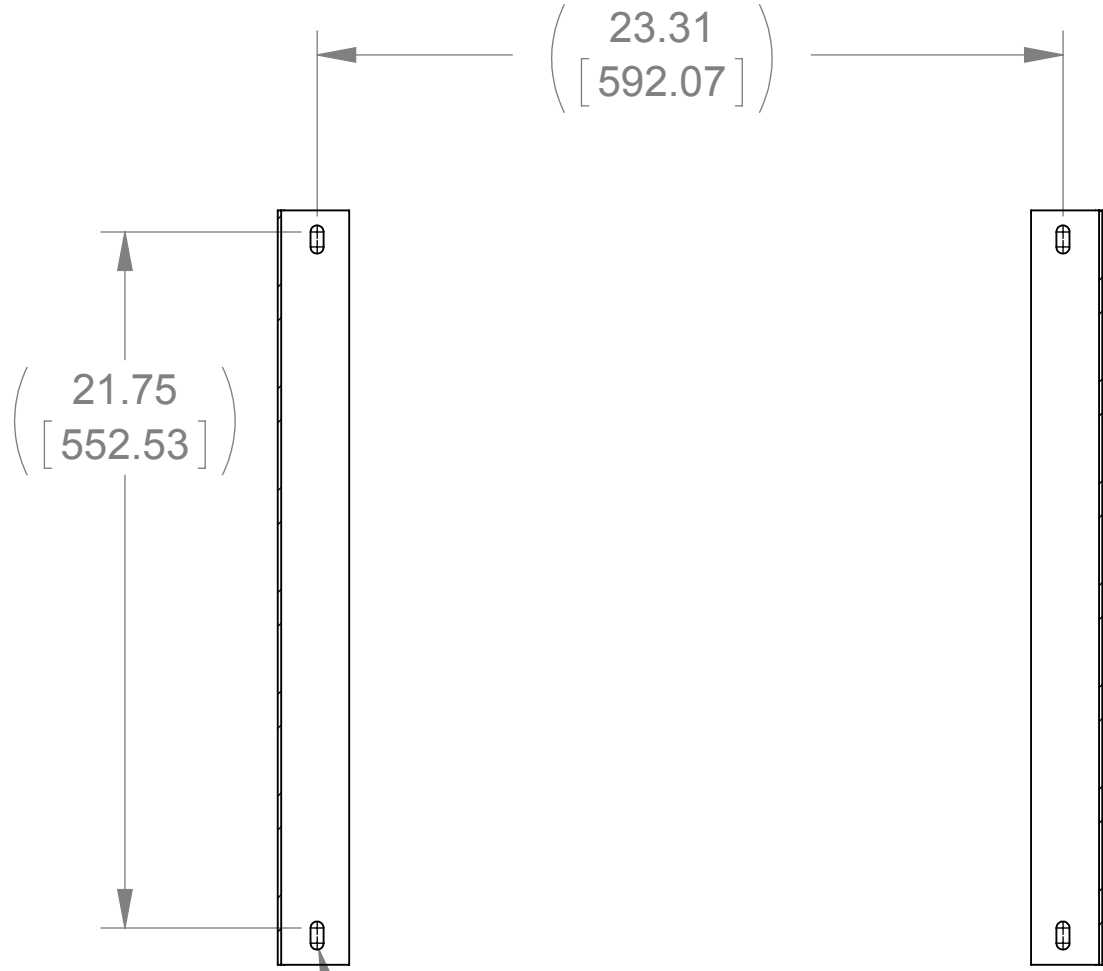


APPROX. WEIGHT
430 lbs

ECO No	DESCRIPTION	REV BY	DATE
		SC	12/29/11

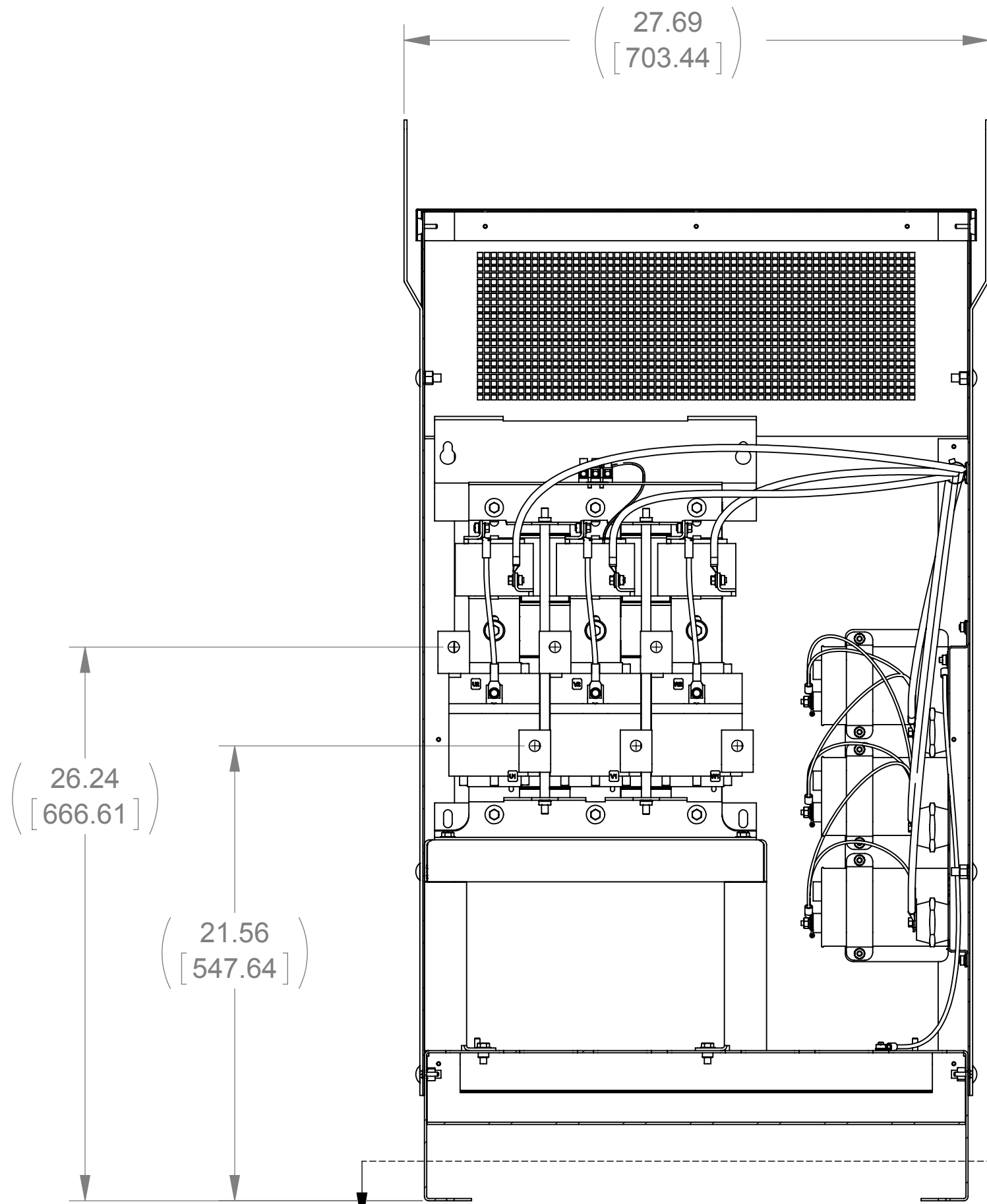
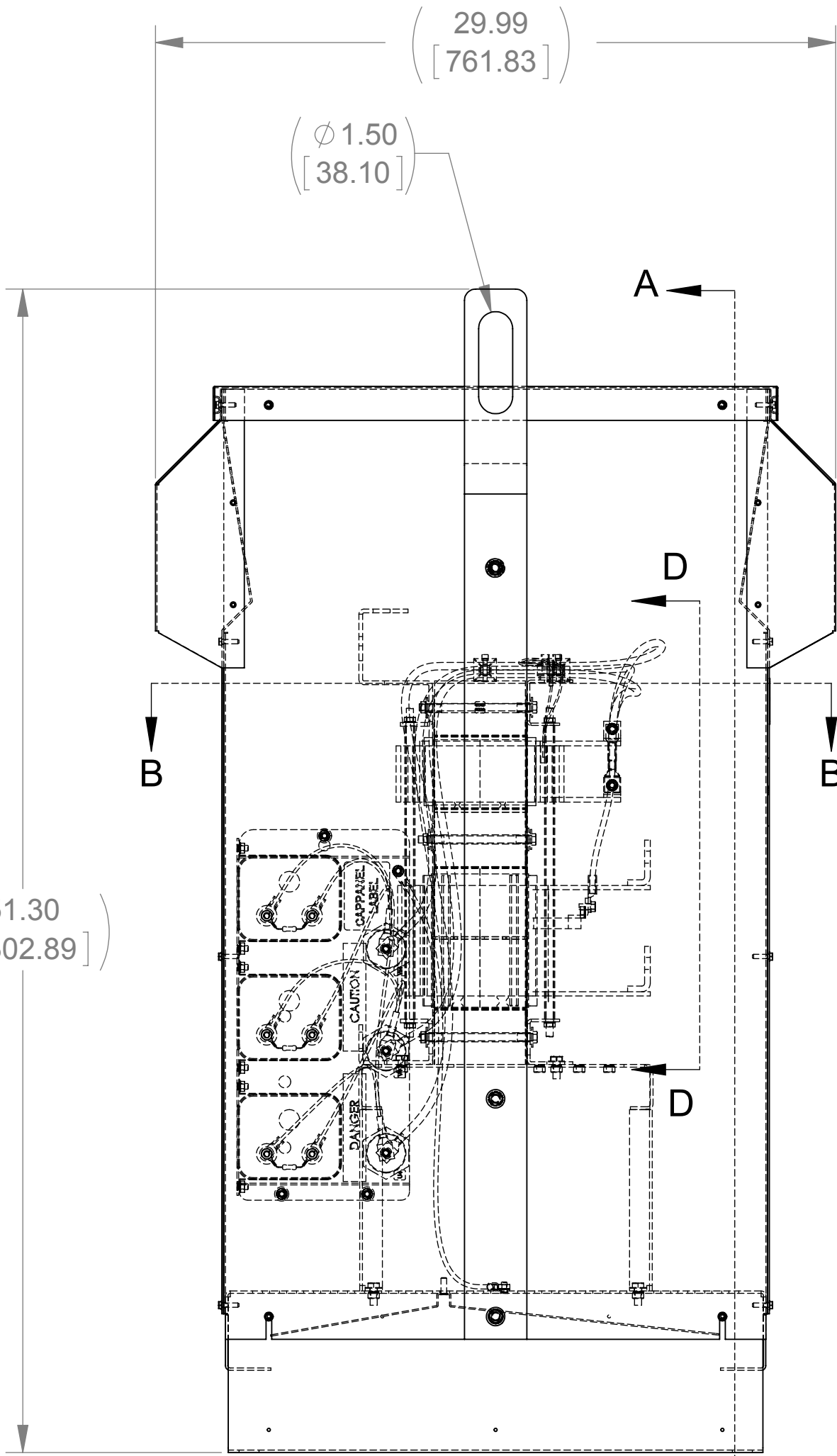
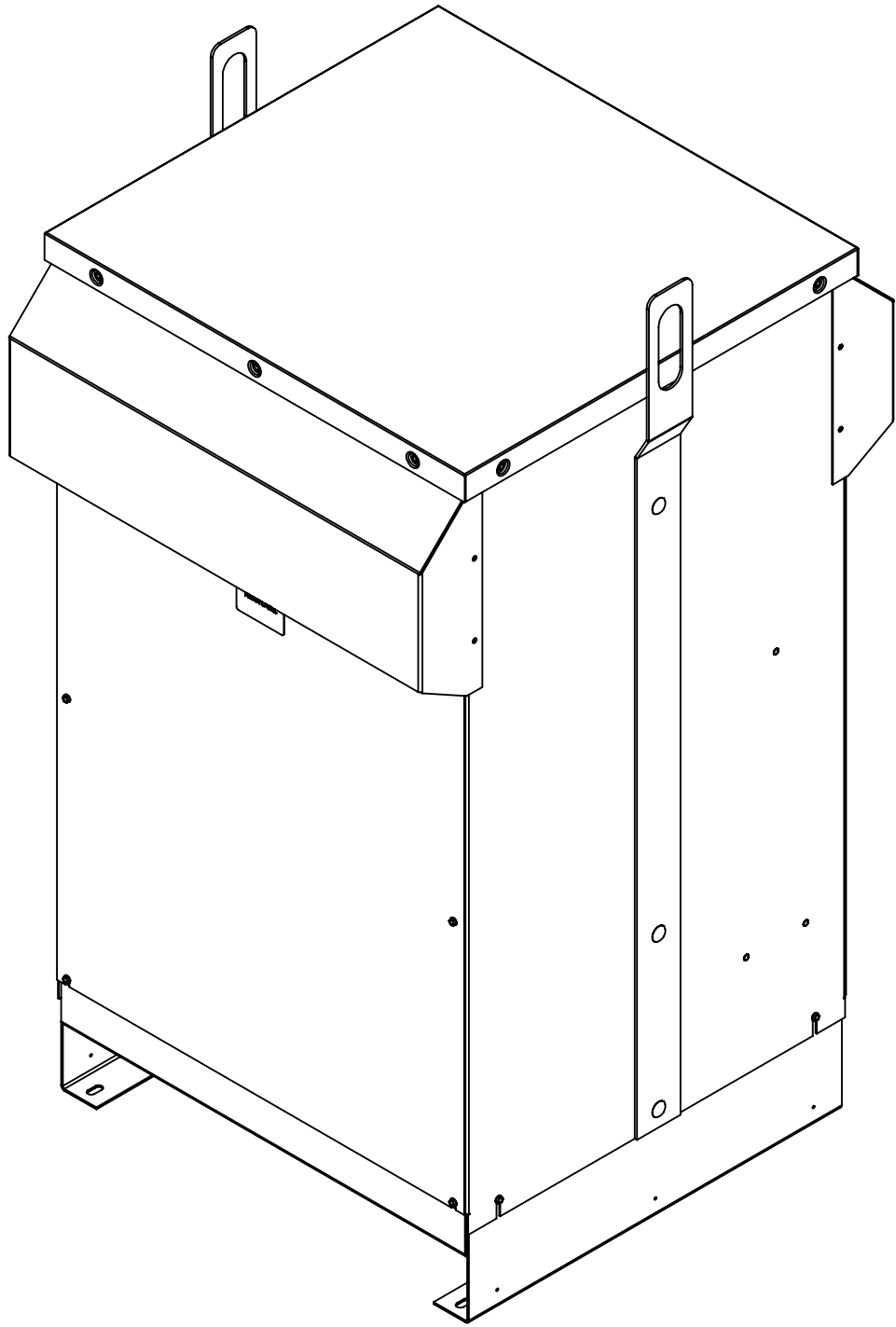


SECTION B-B

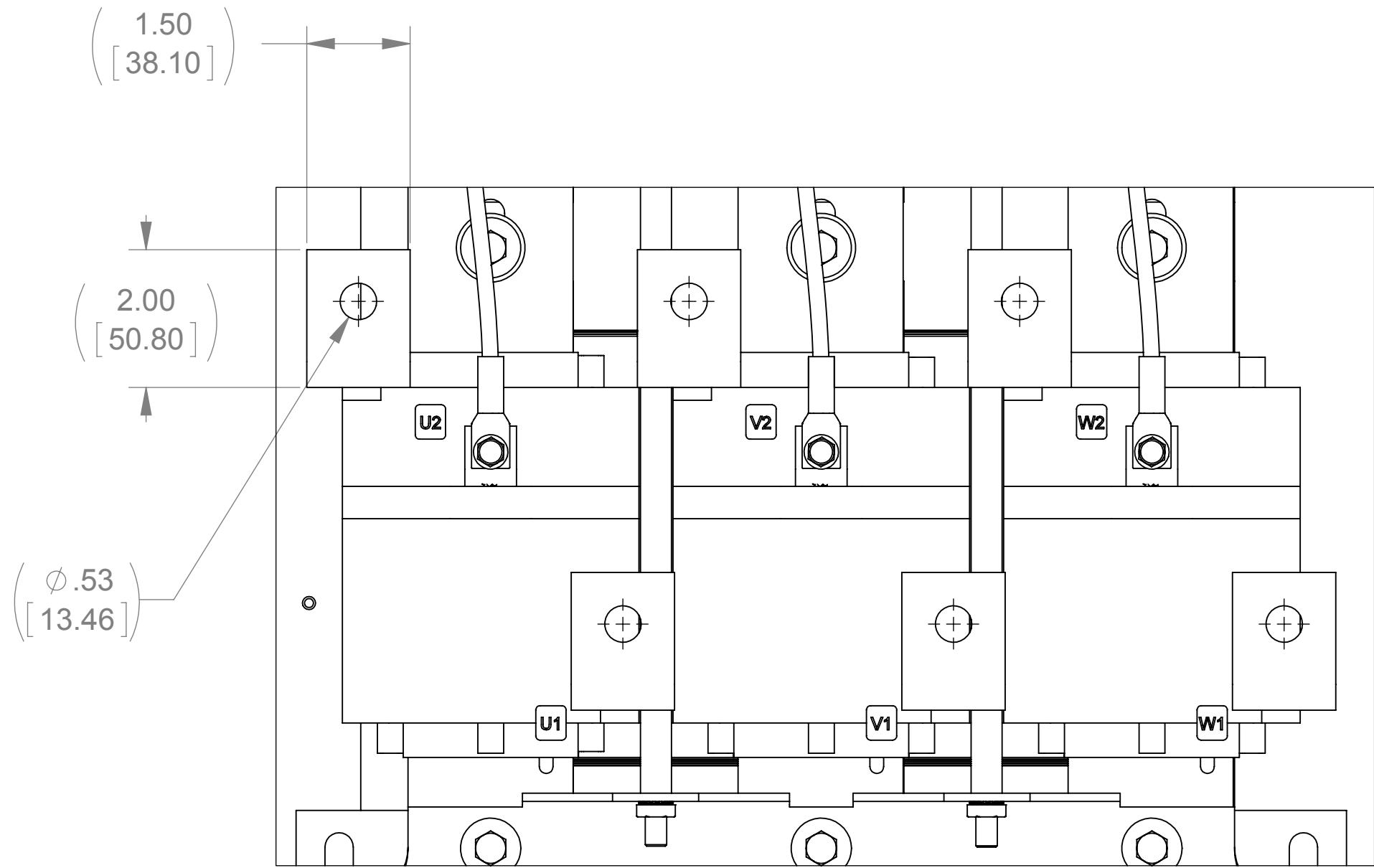


SECTION C-C

(4XR.205 [10.41] X .880 [22.35])



SECTION A-A



SECTION D-D

THE COMPONENT, PART OR ASSEMBLY DESCRIBED IN THIS DOCUMENT MUST COMPLY WITH THE EU(EUROPEAN UNION) DIRECTIVE RoHS		MATERIAL		CONFIDENTIAL AND PROPRIETARY INFORMATION THIS DOCUMENT CONTAINS CONFIDENTIAL AND PROPRIETARY INFORMATION OF MTE CORPORATION AND MAY NOT BE USED, COPIED OR DISCLOSED TO OTHERS EXCEPT WITH THE AUTHORIZED WRITTEN PERMISSION OF MTE CORPORATION	
CONTAINS <0.1% OF ANY SVHC BY WEIGHT PER REACH REGULATION				DESCRIPTION	
UNLESS OTHERWISE SPECIFIED DIMENSIONS ARE IN INCHES [MM] TOLERANCES ARE: ANGLES: ± 1 ° 1 PLACE .X: ± .1 [2.5] 2 PLACE .XX: ± .03 [0.76] 3 PLACE .XXX: ± .010 [0.254]		MTE AN EL POWER ELECTRONICS COMPANY N83 W13330 Leon Road Menomonee Falls, WI 53051 USA 800.455.4683 262.253.8200		MATRIX-AP FILTER 208A,480	
		DRAWN SG	DATE 09/08/11	SIZE D	DWG No. CD MAPW0208D
		CHECKED TS	DATE 12/29/11	REV 00	
		APPROVED TS	DATE 12/29/11	SCALE 1:6	SHEET 1 OF 1