

# Power Mod™

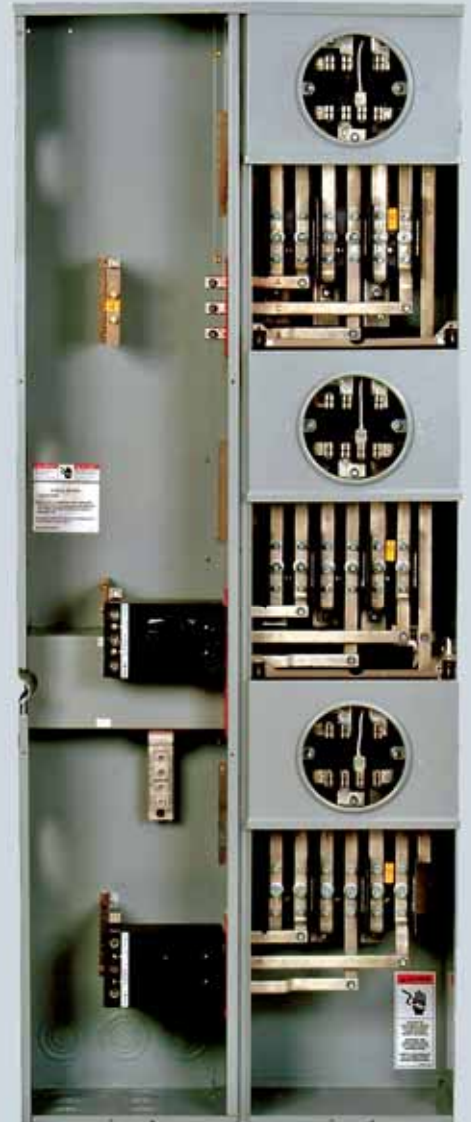
Commercial Test Block Bypass Meter Stacks (type WMT) are designed to meet the requirements of those utilities specifying test block bypass meter sockets for commercial applications in areas subscribing to the EUSERC standards.

Features include:

- QuickSystem™ features
- High-quality, time-proven Siemens SMM switchboard meter socket
- Removable back knockout plate to facilitate wiring
- 225 Amp capability in single and three phase designs
- Up to 3 positions with 225 Amp tenant mains
- Wiring flexibility - tenant mains require only a single bend
- Three phase input, single phase output modules
- In line wiring: side knockouts allow wiring for adjacent units to pass through

## Test Block Bypass quick reference

- 225A 1-3 positions
- 1200A thru-bus rating
- UL Standard #'s UL67
- UL file # E27100
- AIC Rating (100k)
- Voltage
  - Single phase 120/240V AC max
  - 3 phase in single phase out 120Y/208V AC max
  - Three phase 240V AC max
- All swing latches and rivets are stainless steel
- NEMA 3R rated
- G90 galvanized steel
- ANSI 61 paint
- EUSERC drawing numbers 304 and 305



## Test Block Bypass Meter Stacks

# Power Mod: Test Block Bypass

## Features



**EUSERC compliant Test Block Bypass Meter Socket**



**Breakers require only a single bend to wire**

Single phase installations feature the QS breaker which allows 125 or 225 breaker flexibility without sacrificing cost. Three phase installations feature a horizontally mounted breaker which minimizes height and allows for a single bend to wire.



**Neutral lugs centrally located**

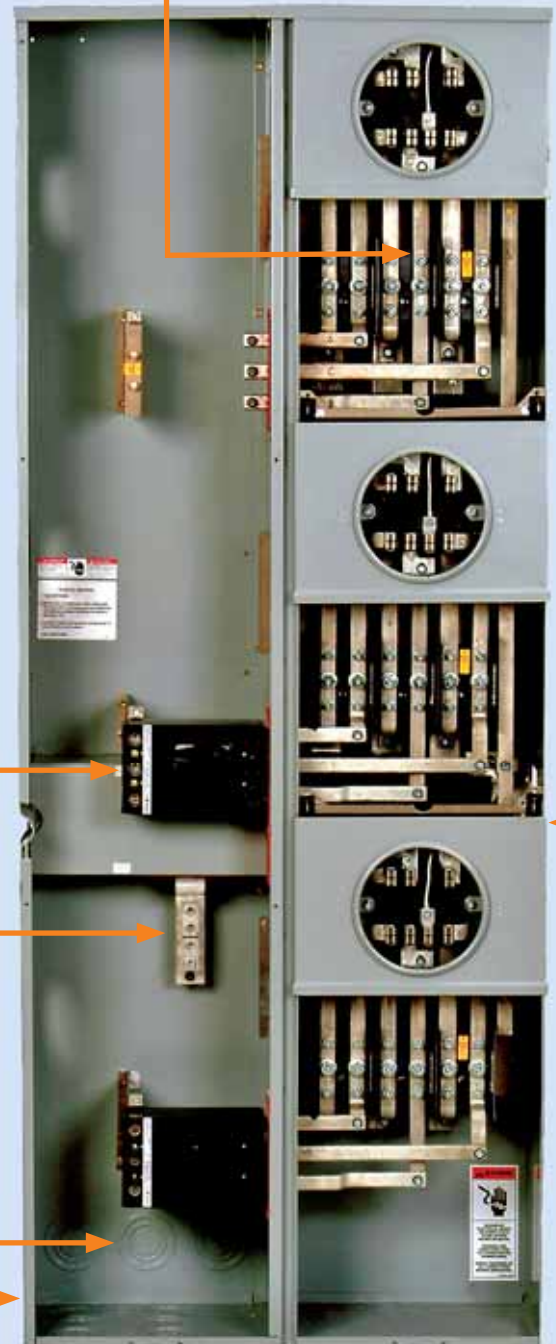


**Removable back KO plate**

Keeping the contractor in mind, simplifies and speeds up pulling wire. Entire plate can be removed to allow ample space for wire. Knockouts in the plate can be removed before or after stack installation



**Side knockouts for pass through conductors**



# Power Mod: Test Block Bypass

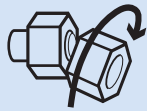
## Features



**Siemens  
exclusive  
feature**

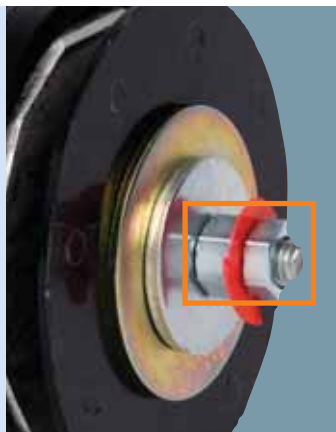
### QuickConnect™

QuickConnect reduces bussing connections from many to one- ensuring a single reliable connection instead of multiple connections.



### QuickTorque™

Eliminates the need for time consuming torque readings, this breakaway nut provides the correct indication of torque of the Quick-Connect. When tightened, the outer head twists off at the proper torque for connection, leaving a single nut for future maintenance.



**Siemens  
exclusive  
feature**

### QuickBolt™

QuickBolt eliminates the requirement to line up mechanical connections- instead bolts remain retracted until the openings lineup - allowing the bolts to protrude through automatically. Springs push the bolts through and provide positive pressure to keep bolts in place while wingnuts are attached and tightened.



### Mounting ear

Pivot factory installed mounting ears to minimum or maximum position to provide additional stability when mounting equipment onto wall.



**Siemens  
exclusive  
feature**

### QuickRoll™

QuickRoll eliminates the typical metal brackets for mounting modules to the wall. Instead of metal scraping metal QuickRoll allows the module to glide down the mounting rail via a durable nylon wheel inside mounting bracket.

# Power Mod: Test Block Bypass

## Catalog numbers

### Commercial Meter Stacks: Test Block Bypass, 100k AIC<sup>③</sup>

Catalog number	Meter positions per stack	Max. tenant breaker (Amps)	Breaker provisions	Dimensions (inches) <sup>①</sup>			Phase	KO drawing no.
				Height	Width	Depth		

#### 1-phase, 3-wire SN, incoming and outgoing, test block bypass, 4-jaw sockets<sup>②</sup>

WMT11225	1	225	QS, QSH, QSHH,	40.50	21.50	9.00	—	TB-1
WMT21225	2	225	HQS, HQSH, QP, QPH, HQP, MP-T,	46.00	21.50	9.00	—	TB-2
WMT31225	3	225	MP-HT, MP-MT	65.50	21.50	9.00	—	TB-3

#### 3-phase, 4-wire SN, incoming and 1-phase, 3-wire SN outgoing, test block bypass, 5-jaw sockets<sup>②⑤</sup>

WMT12225J	1	225	QS, QSH, QSHH, HQS, HQSH, QP, QPH, HQP, MP-T, MP-HT, MP-MT	40.50	21.50	9.00	AB	TB-1
WMT22AB225J	2	225		46.00	21.50	9.00	1-BC, 1-CA	TB-2
WMT22BC225J	2	225		46.00	21.50	9.00	1-AB, 1-CA	TB-2
WMT22CA225J	2	225		46.00	21.50	9.00	1-AB, 1-BC	TB-2
WMT32225J	3	225		65.50	21.50	9.00	1-AB, 1-BC, 1-CA	TB-3

#### 3-phase, 4-wire SN, incoming and outgoing, test block bypass, 7-jaw sockets<sup>④</sup>

WMT13225J	1	225	QJ2, QJH2, QJ2H, HQJ2H, MQ, MQH, MQL	40.50	25.50	9.00	—	TB-4
WMT23225J	2	225		46.00	25.50	9.00	—	TB-5
WMT33225J	3	225		65.50	25.50	9.00	—	TB-6

① Dimensions shown are representative of outside box dimensions and do not include allowances for mounting bumps, hubs, or hardware protrusions.

② Not for use on 3-phase, 4-wire delta systems.

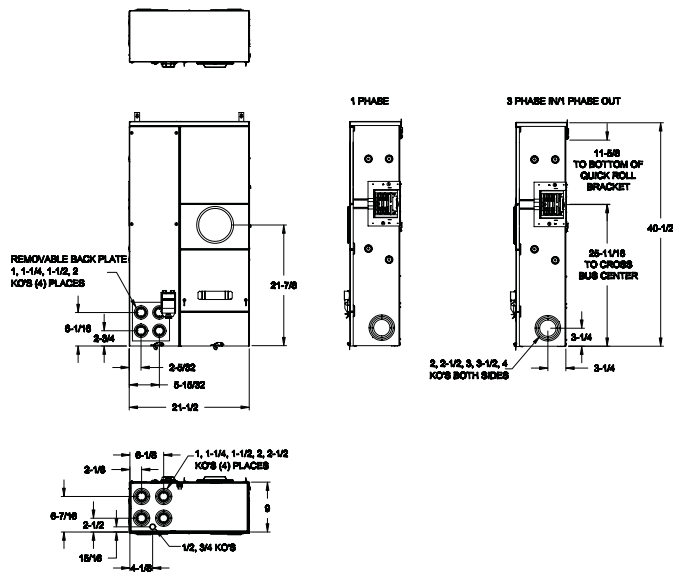
③ Max AIC determined by maximum AIC of tenant breakers when used in conjunction with a meter socket.

④ Rated for use with 240/120V Delta systems.

⑤ Commercial Stacks are not field phaseable.

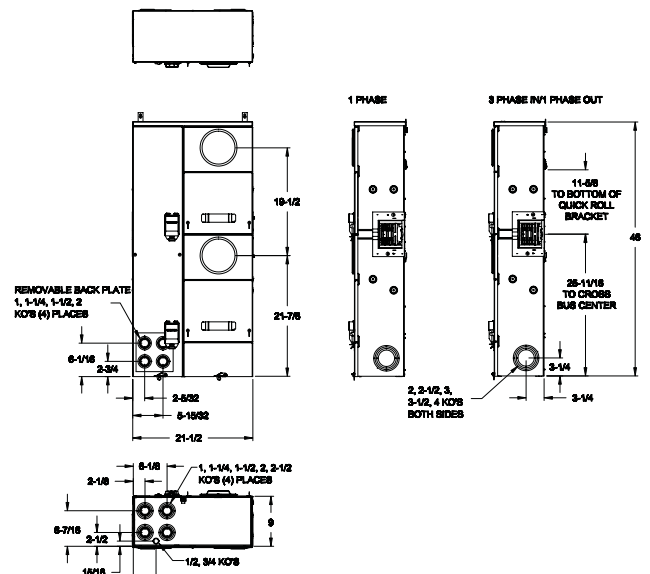
# Power Mod: Test Block Bypass

## Knockout diagrams



TB-1

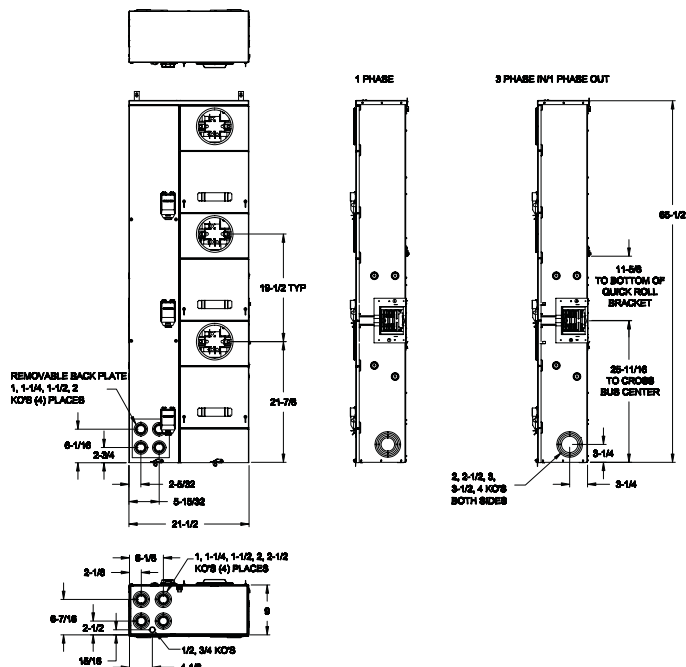
WMT12225J



TB-2

WMT22AB225J  
WMT22BC225J

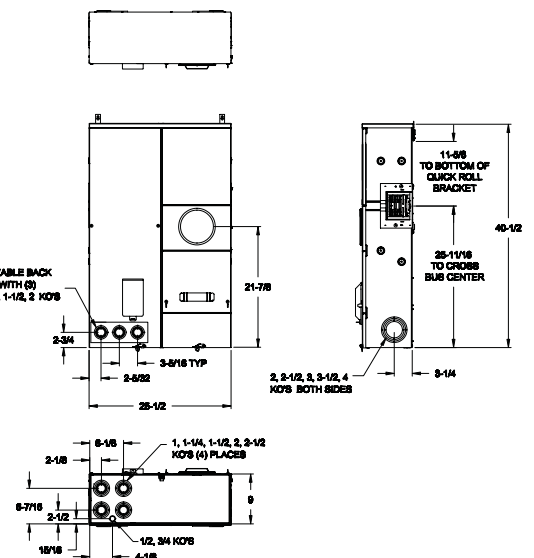
WMT22CA225J



TB-3

WMT31225J

WMT32225J

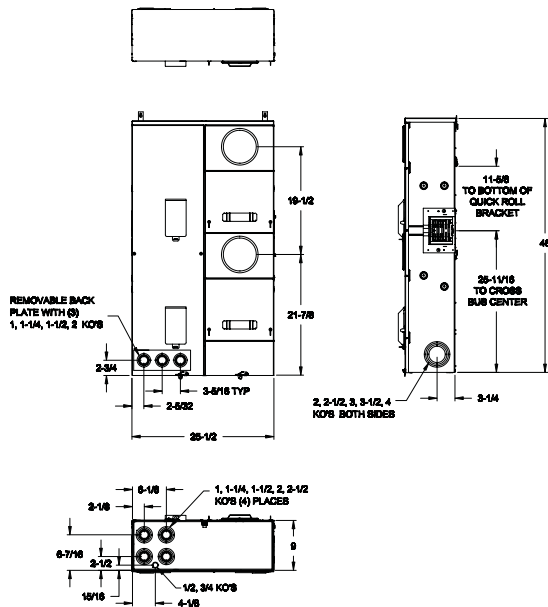


TB-4

WMT13225J

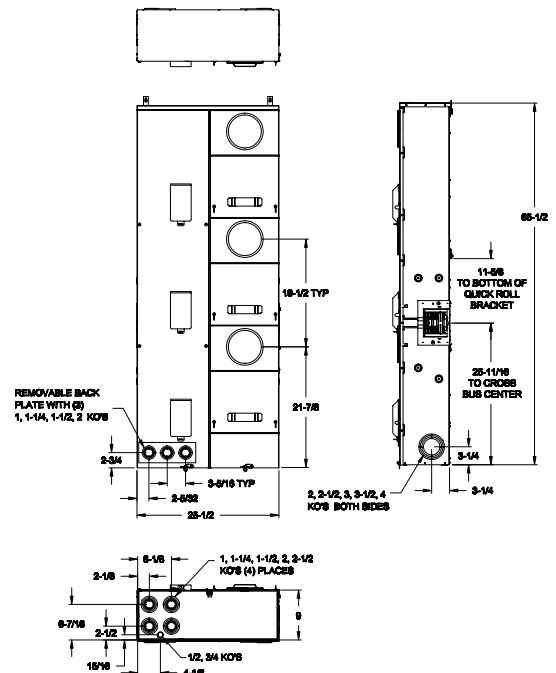
# Power Mod: Test Block Bypass

## Knockout diagrams



TB-5

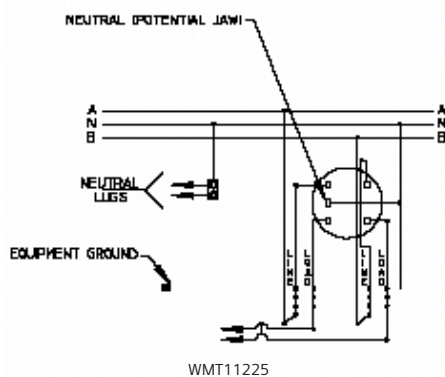
WMT33225J



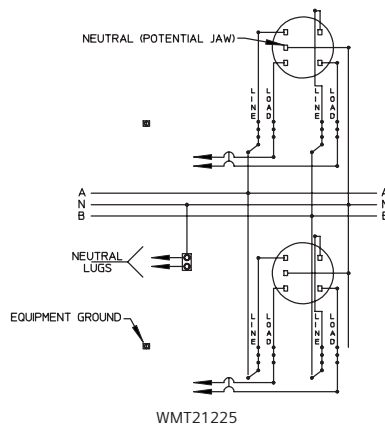
TB-6

WMT33225J

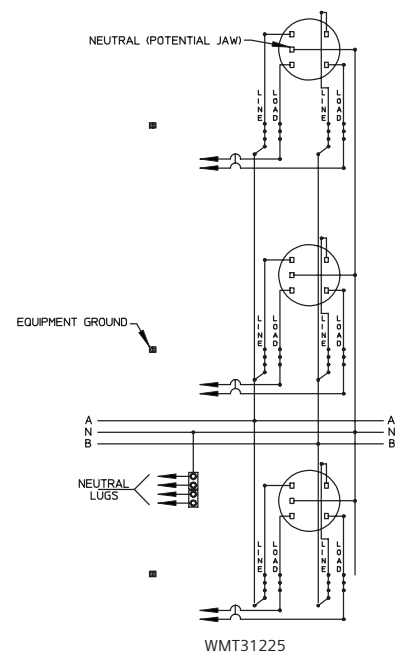
## Schematics



WMT11225

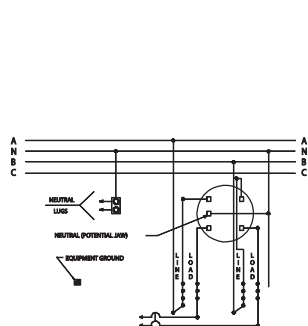


WMT21225

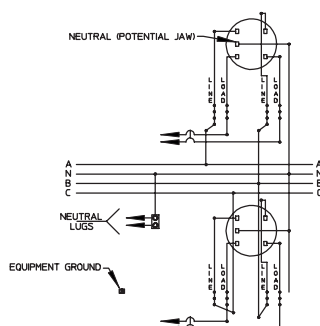


WMT31225

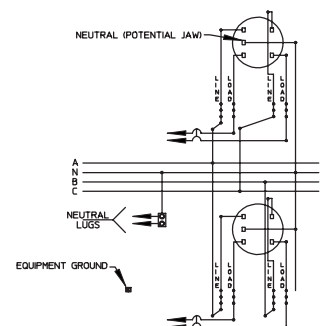
# Power Mod: Test Block Bypass Schematics



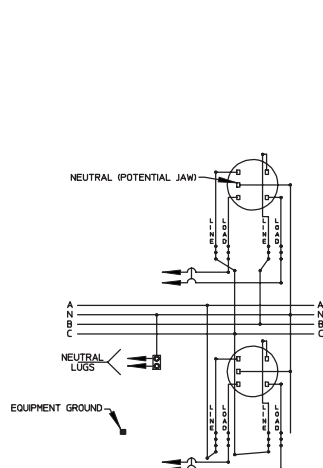
WMT22225J



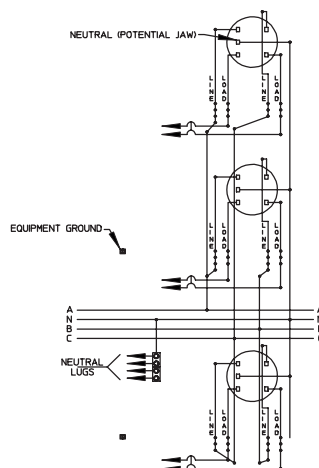
WMT22AB225J



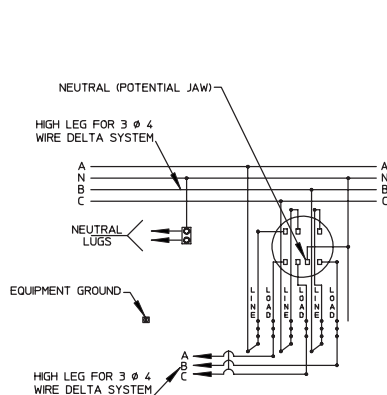
WMT22BC225J



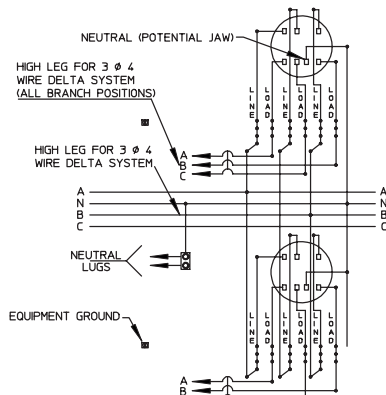
WMT22CA225J



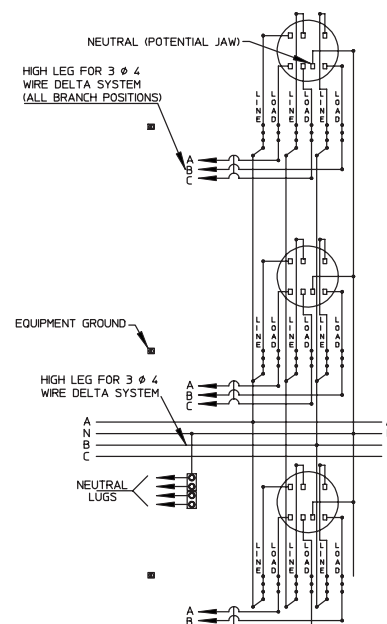
WMT32225J



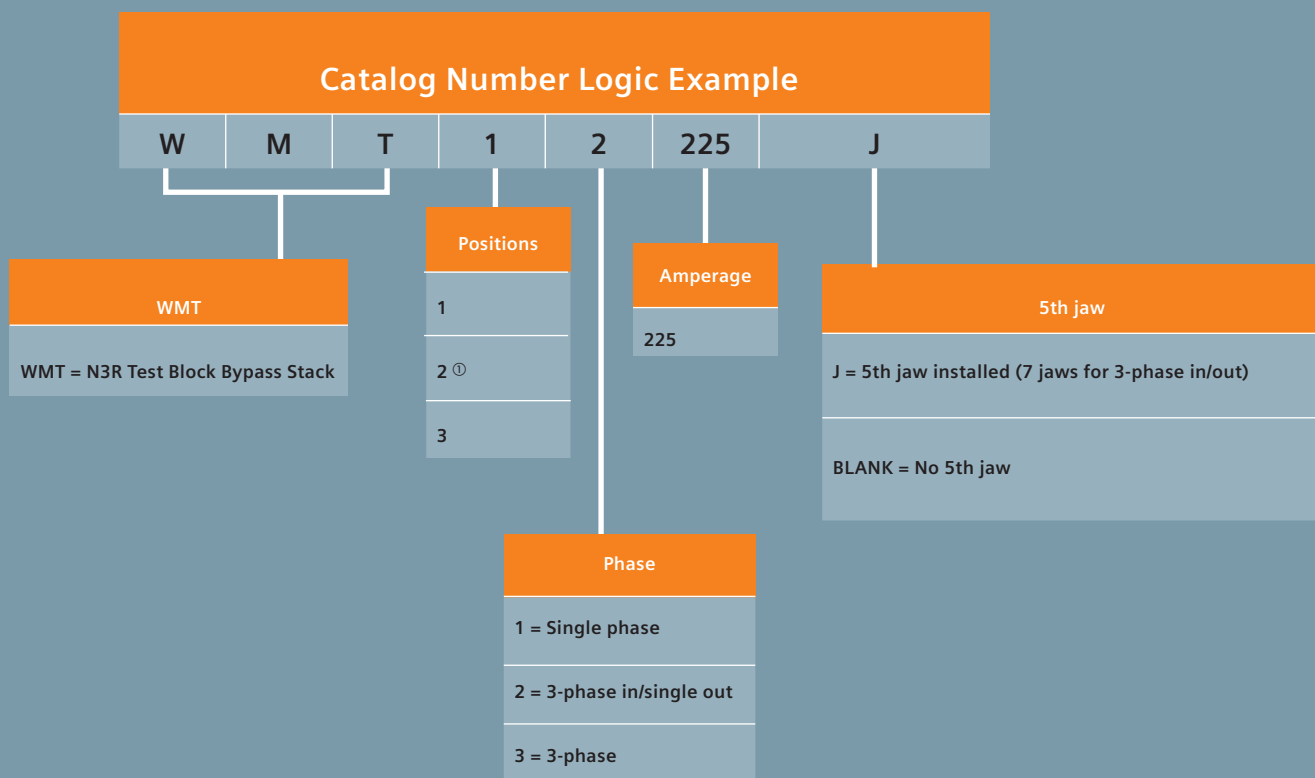
WMT13225J



WMT23225J



WMT33225J



① 2 position 225A stacks have AB, BC, or CA configurations.