

## HOW TO CHOOSE THE RIGHT OPTION FOR YOUR OPEN SPACE PROJECT

### Poke-Thru Devices and Floor Boxes

For many professionals that are designing or planning a space with an open floor plan, choosing the right electrical solution can be difficult.

Poke-thru devices and floor boxes bring electrical connections to spaces that can't rely solely on receptacles in walls. In both new construction and retrofit projects, moving connections to the floor can open up options for a more free-flowing design and layout.

Determine the best choice for your project by selecting your profession and project type.

### FEATURING NEW



EVOLUTION™ SERIES  
HEAVY-DUTY COVERS



EVOLUTION™ SERIES  
DURABLE COVERS

## FIND THE RIGHT POKE-THRU DEVICE OR FLOOR BOX



### HIGH FOOT TRAFFIC

An open area with plenty of visitors coming and going

- Architects/Designers
- Engineers



### OPEN OFFICE WITH FIXED WORKSTATIONS

An office space with furniture that doesn't change often

- Architects/Designers
- Engineers



### CONFIGURABLE WORKSPACES

An office space that is frequently changed and rearranged

- Architects/Designers
- Engineers



### OPEN AREAS WITH HEAVY EQUIPMENT TRAFFIC

An open area with heavy equipment often moving throughout

- Architects/Designers
- Engineers



### SHARED WORKSPACES

A coworking space with many rotating end users

- Architects/Designers
- Engineers

## HIGH FOOT TRAFFIC

### WHAT IS AN OPEN SPACE WITH HIGH FOOT TRAFFIC?

- Lots of people moving around the space
- End users are typically visitors that need the connections to power their mobile devices



Lobbies



Libraries



Airport Gate Areas

## WHAT DOES AN IDEAL SOLUTION LOOK LIKE?



### SAY YES TO THESE FEATURES

- Intuitive and easy to use
- Durable enough to withstand frequent foot traffic
- Aesthetically-pleasing and design-friendly



### AVOID

- Hard to recognize as a floor outlet
- Large or bulky styles
- Recessed or monument style products
- Limited color options

## CHOOSE THE RIGHT POKE-THRU DEVICE OR FLOOR BOX

### UNDERSTANDING THE RATINGS

- ○ ○ ○ ○ = Poor
- ● ○ ○ ○ = Fair
- ● ● ○ ○ = Acceptable
- ● ● ● ○ = Excellent
- ● ● ● ● = Best-in-class for this application

### UNDERSTANDING THE CATEGORIES

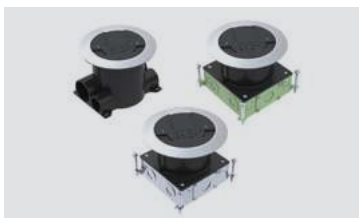
- DURABILITY**  
Withstands wear, pressure and damage
- USER-FRIENDLY**  
Easy to operate
- LOW PROFILE**  
Close to the floor
- AESTHETIC DESIGN**  
Blends in to any space
- CONFIGURABILITY**  
Adapts to your needs



### RC™ SERIES SURFACE STYLE POKE-THRU DEVICES

- |                  |               |            |             |                 |                                  |
|------------------|---------------|------------|-------------|-----------------|----------------------------------|
| AESTHETIC DESIGN | USER-FRIENDLY | DURABILITY | LOW PROFILE | CONFIGURABILITY | New and retrofit concrete floors |
| ● ● ● ● ○        | ● ● ● ● ●     | ● ● ● ● ○  | ● ● ● ● ○   | ● ● ● ● ○       |                                  |

- Cover automatically closes for a clean look that stays protected
- Easy to recognize and intuitive to use
- Low profile extends only 3/8" to 3/4" above the floor and is ADA compliant
- Available in black, brass, aluminum and gray



### RATCHET-PRO™ SERIES FLOOR BOXES

- |                  |               |            |             |                 |                     |
|------------------|---------------|------------|-------------|-----------------|---------------------|
| AESTHETIC DESIGN | USER-FRIENDLY | DURABILITY | LOW PROFILE | CONFIGURABILITY | New concrete floors |
| ● ● ● ● ○        | ● ● ● ● ●     | ● ● ● ● ○  | ● ● ● ● ○   | ● ● ● ● ○       |                     |

- Cover automatically closes for a clean look that stays protected
- Easy to recognize and intuitive to use
- Low profile extends only 3/8" to 3/4" above the floor and is ADA compliant
- Available in black, brass, aluminum and gray



### 881™ SERIES FLOOR BOXES

- |                  |               |            |             |                 |                     |
|------------------|---------------|------------|-------------|-----------------|---------------------|
| AESTHETIC DESIGN | USER-FRIENDLY | DURABILITY | LOW PROFILE | CONFIGURABILITY | New concrete floors |
| ● ● ● ● ●        | ● ● ● ● ○     | ● ● ● ● ○  | ● ● ● ● ●   | ● ● ● ● ○       |                     |

- Easy to recognize
- Lowest profile extends just up to 3/16" above the floor
- Available in brushed aluminum and solid brass

## CHOOSE THE RIGHT FLOOR BOX OR POKE-THRU DEVICE



### OMNIBOX™ SERIES FLOOR BOXES

AESTHETIC DESIGN	USER-FRIENDLY	DURABILITY	LOW PROFILE	CONFIGURABILITY
●●●●○	●●●○○○	●●●●○○	●●●●●●	●●●●○○

New concrete or wood floors

- Minimal design doesn't take up much space
- Lowest profile extends just up to 3/16" above the floor
- Available in brushed aluminum and solid brass



### MODULINK™ 880MP SERIES FLOOR BOXES

AESTHETIC DESIGN	USER-FRIENDLY	DURABILITY	LOW PROFILE	CONFIGURABILITY
●●●●○	●●●○○○	●●●●○○	●●●●●●	●●●●○○

New concrete floors

- Minimal design doesn't take up much space
- Lowest profile extends just up to 3/16" above the floor
- Available in brushed aluminum and solid brass



### 861™ SERIES FLOOR BOXES

AESTHETIC DESIGN	USER-FRIENDLY	DURABILITY	LOW PROFILE	CONFIGURABILITY
●●●○○○	●●●●●●	●●●●○○	●●●●○○	●●●●○○

Wood floors

- Cover automatically closes for a clean look that stays protected
- Easy to recognize and intuitive to use
- Low profile extends only 3/8" to 3/4" above the floor
- Available in black, brass, aluminum and gray

## HIGH FOOT TRAFFIC

### WHAT IS AN OPEN SPACE WITH HIGH FOOT TRAFFIC?

- Lots of people moving around the space
- End users are typically visitors that need the connections to power their mobile devices



Lobbies



Libraries



Airport Gate Areas

## WHAT DOES AN IDEAL SOLUTION LOOK LIKE?



### SAY YES TO THESE FEATURES

- Durable enough to withstand frequent foot traffic
- Intuitive and easy to use
- Aesthetically-pleasing and design-friendly
- Maintains the ADA compliance of the workspace



### AVOID

- Hard to recognize as a floor outlet
- Large or bulky styles
- Recessed or monument style products
- Limited color options

## CHOOSE THE RIGHT POKE-THRU DEVICE OR FLOOR BOX

### UNDERSTANDING THE RATINGS

- ○ ○ ○ ○ = Poor
- ● ○ ○ ○ = Fair
- ● ● ○ ○ = Acceptable
- ● ● ● ○ = Excellent
- ● ● ● ● = Best-in-class for this application

### UNDERSTANDING THE CATEGORIES

- DURABILITY**  
Withstands wear, pressure and damage
- USER-FRIENDLY**  
Easy to operate
- LOW PROFILE**  
Close to the floor
- AESTHETIC DESIGN**  
Blends in to any space
- CONFIGURABILITY**  
Adapts to your needs



### RC™ SERIES SURFACE STYLE POKE-THRU DEVICES

- |            |               |                  |             |                 |                                  |
|------------|---------------|------------------|-------------|-----------------|----------------------------------|
| DURABILITY | USER-FRIENDLY | AESTHETIC DESIGN | LOW PROFILE | CONFIGURABILITY | New and retrofit concrete floors |
| ● ● ● ● ○  | ● ● ● ● ●     | ● ● ● ● ○        | ● ● ● ● ○   | ● ● ● ● ○       |                                  |

- Cover automatically closes for a clean look that stays protected
- Easy to recognize and intuitive to use
- Low profile extends only 3/8" to 1/2" above the floor and is ADA compliant
- Multiple prewired configurations



### RATCHET-PRO™ SERIES FLOOR BOXES

- |            |               |                  |             |                 |                     |
|------------|---------------|------------------|-------------|-----------------|---------------------|
| DURABILITY | USER-FRIENDLY | AESTHETIC DESIGN | LOW PROFILE | CONFIGURABILITY | New concrete floors |
| ● ● ● ● ○  | ● ● ● ● ●     | ● ● ● ● ○        | ● ● ● ● ○   | ● ● ● ● ○       |                     |

- Cover automatically closes for a clean look that stays protected
- Easy to recognize and intuitive to use
- Low profile extends only 3/8" to 1/2" above the floor and is ADA compliant
- Multiple prewired configurations



### 881™ SERIES FLOOR BOXES

- |            |               |                  |             |                 |                     |
|------------|---------------|------------------|-------------|-----------------|---------------------|
| DURABILITY | USER-FRIENDLY | AESTHETIC DESIGN | LOW PROFILE | CONFIGURABILITY | New concrete floors |
| ● ● ● ● ○  | ● ● ● ● ○     | ● ● ● ● ●        | ● ● ● ● ●   | ● ● ● ● ○       |                     |

- More durable covers with solid aluminum and solid brass
- Easy to recognize
- Lowest profile extends just up to 3/16" above the floor and is ADA compliant
- High configurability

## CHOOSE THE RIGHT FLOOR BOX OR POKE-THRU DEVICE



### OMNIBOX™ SERIES FLOOR BOXES



New concrete or wood floors

- More durable covers with solid aluminum and solid brass
- Easy to recognize
- Lowest profile extends just up to 3/16" above the floor and is ADA compliant
- High configurability



### MODULINK™ 880MP SERIES FLOOR BOXES



New concrete floors

- More durable covers with solid aluminum and solid brass
- Easy to recognize
- Lowest profile extends just up to 3/16" above the floor and is ADA compliant
- High configurability



### 861™ SERIES FLOOR BOXES



Wood floors

- Cover automatically closes for a clean look that stays protected
- Easy to recognize and intuitive to use
- Low profile extends only 3/8" to 1/2" above the floor and is ADA compliant
- Multiple prewired configurations

## OPEN OFFICE WITH FIXED WORKSTATIONS

### WHAT IS AN OPEN OFFICE WITH FIXED WORKSTATIONS?

- Office spaces with an open floor plan and permanent desks, tables and other workstations
- Design, furniture and layout that doesn't change often
- Lots of end users that need many connections



Work Areas



Conference Rooms



Open Office Space

## WHAT DOES AN IDEAL SOLUTION LOOK LIKE?



### SAY YES TO THESE FEATURES

- Recessed options
- Brings power to the end user from the floor
- Easily configurable for a range of connections
- Range of finishes



### AVOID

- Not enough connections
- Exposed wires on the floor
- Styles that clash with the design and furniture

## CHOOSE THE RIGHT POKE-THRU DEVICE OR FLOOR BOX

### UNDERSTANDING THE RATINGS

- ○ ○ ○ ○ = Poor
- ● ○ ○ ○ = Fair
- ● ● ○ ○ = Acceptable
- ● ● ● ○ = Excellent
- ● ● ● ● = Best-in-class for this application

### UNDERSTANDING THE CATEGORIES

- DURABILITY**  
Withstands wear, pressure and damage
- USER-FRIENDLY**  
Easy to operate
- LOW PROFILE**  
Close to the floor
- AESTHETIC DESIGN**  
Blends in to any space
- CONFIGURABILITY**  
Adapts to your needs



### EVOLUTION™ DURABLE SERIES POKE-THRU DEVICES

- |                                 |                                |                              |                           |                            |                                  |
|---------------------------------|--------------------------------|------------------------------|---------------------------|----------------------------|----------------------------------|
| AESTHETIC DESIGN<br>● ● ● ● ● ○ | CONFIGURABILITY<br>● ● ● ● ● ● | USER-FRIENDLY<br>● ● ● ● ○ ○ | DURABILITY<br>● ● ● ● ● ● | LOW PROFILE<br>● ● ● ● ● ● | New and retrofit concrete floors |
|---------------------------------|--------------------------------|------------------------------|---------------------------|----------------------------|----------------------------------|

- Recessed activation that is seamless and unobtrusive
- Easy to use
- Highly configurable and accepts a wide range of power, data and A/V devices
- Lowest profile extends just up to 3/16" above the floor and is ADA compliant
- Long-lasting, high-end finishes in brushed aluminum, plated brass and plated nickel



### EVOLUTION™ SERIES POKE-THRU DEVICES

- |                                 |                                |                              |                           |                            |                                  |
|---------------------------------|--------------------------------|------------------------------|---------------------------|----------------------------|----------------------------------|
| AESTHETIC DESIGN<br>● ● ● ● ● ○ | CONFIGURABILITY<br>● ● ● ● ● ● | USER-FRIENDLY<br>● ● ● ● ○ ○ | DURABILITY<br>● ● ● ● ● ○ | LOW PROFILE<br>● ● ● ● ● ● | New and retrofit concrete floors |
|---------------------------------|--------------------------------|------------------------------|---------------------------|----------------------------|----------------------------------|

- Recessed activation that is seamless and unobtrusive
- Easy to use
- Highly configurable and accepts a wide range of power, data and A/V devices
- Lowest profile extends just up to 3/16" above the floor and is ADA compliant
- Six powder coat finishes: black, gray, brass, nickel, bronze and aluminum

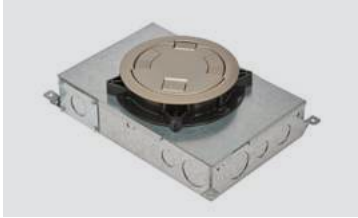


### EVOLUTION™ SERIES FLOOR BOXES

- |                                 |                                |                              |                           |                            |                     |
|---------------------------------|--------------------------------|------------------------------|---------------------------|----------------------------|---------------------|
| AESTHETIC DESIGN<br>● ● ● ● ● ○ | CONFIGURABILITY<br>● ● ● ● ● ● | USER-FRIENDLY<br>● ● ● ● ○ ○ | DURABILITY<br>● ● ● ● ● ○ | LOW PROFILE<br>● ● ● ● ● ● | New concrete floors |
|---------------------------------|--------------------------------|------------------------------|---------------------------|----------------------------|---------------------|

- Recessed activation with a carpet inlay area seamlessly blends into its environment
- Easy to use
- Highly configurable and accepts a wide range of power, data and A/V devices
- Lowest profile extends just up to 3/16" above the floor and is ADA compliant
- Five powder coat finishes: black, brass, bronze, gray and nickel

## CHOOSE THE RIGHT FLOOR BOX OR POKE-THRU DEVICE

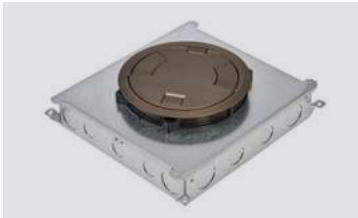


### RFBE DURABLE SERIES FLOOR BOXES



New concrete floors

- Recessed activation that is seamless and unobtrusive
- Easy to use
- Highly configurable and accepts a wide range of power, data and A/V connections
- Lowest profile extends just up to 3/16" above the floor
- Long-lasting, high-end finishes in brushed aluminum, plated brass and plated nickel

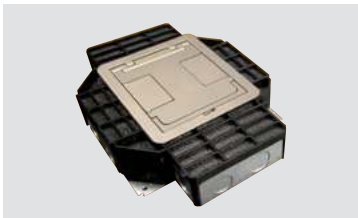


### RFBE SERIES FLOOR BOXES



New concrete floors

- Recessed activation that is seamless and unobtrusive
- Easy to use
- Highly configurable and accepts a wide range of power, data and A/V connections
- Lowest profile extends just up to 3/16" above the floor
- Six powder coat finishes: black, gray, brass, nickel, bronze and aluminum



### RESOURCE RFB™ SERIES FLOOR BOXES



New concrete floors

- Recessed activation that is seamless and unobtrusive
- Carpet inlay area seamlessly blends into its environment
- Easy to use
- Highly configurable and accepts a wide range of power, data and A/V connections
- Lowest profile extends just up to 3/16" above the floor
- Long-lasting, high-end finish in brushed aluminum



### CRFB™ SERIES RAISED FLOOR BOXES



New raised floors

- Recessed activation that is seamless and unobtrusive
- Easy to use
- Highly configurable and accepts a wide range of power, data and A/V connections
- Lowest profile extends just up to 3/16" above the floor
- Six powder coat finishes: black, gray, brass, nickel, bronze and aluminum

## OPEN OFFICE WITH FIXED WORKSTATIONS

### WHAT IS AN OPEN OFFICE WITH FIXED WORKSTATIONS?

- Office spaces with an open floor plan and permanent desks, tables and other workstations
- Design, furniture and layout that doesn't change often
- Lots of end users that need many connections



Work Areas



Conference Rooms



Open Office Space

## WHAT DOES AN IDEAL SOLUTION LOOK LIKE?



### SAY YES TO THESE FEATURES

- Plug-in and hardwired options available
- Easily configurable for a range of connections
- Recessed connections
- Range of finishes



### AVOID

- Doesn't integrate with furniture or cubicle
- Not flexible for future connection changes
- Not enough connections for the amount of people working in the space
- Exposed plugs and cords

## CHOOSE THE RIGHT POKE-THRU DEVICE OR FLOOR BOX

### UNDERSTANDING THE RATINGS

- ○ ○ ○ ○ = Poor
- ● ○ ○ ○ = Fair
- ● ● ○ ○ = Acceptable
- ● ● ● ○ = Excellent
- ● ● ● ● = Best-in-class for this application

### UNDERSTANDING THE CATEGORIES

**DURABILITY**  
Withstands wear, pressure and damage

**USER-FRIENDLY**  
Easy to operate

**LOW PROFILE**  
Close to the floor

**AESTHETIC DESIGN**  
Blends in to any space

**CONFIGURABILITY**  
Adapts to your needs



### EVOLUTION™ DURABLE SERIES POKE-THRU DEVICES

CONFIGURABILITY ●●●●●	DURABILITY ●●●●●	AESTHETIC DESIGN ●●●●●○	USER-FRIENDLY ●●●●○	LOW PROFILE ●●●●●	New and retrofit concrete floors
<ul style="list-style-type: none"> <li>• High configurability and a range of capacity to suit your needs</li> <li>• Recessed activation that is seamless and unobtrusive</li> <li>• Long-lasting, high-end finishes in brushed aluminum, plated brass and plated nickel</li> <li>• Easy for customers to operate</li> <li>• Lowest profile extends just up to 3/16" above the floor and is ADA compliant</li> </ul>					



### EVOLUTION™ SERIES POKE-THRU DEVICES

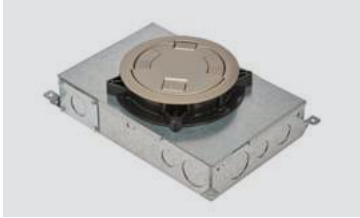
CONFIGURABILITY ●●●●●	DURABILITY ●●●●○	AESTHETIC DESIGN ●●●●○	USER-FRIENDLY ●●●○	LOW PROFILE ●●●●●	New and retrofit concrete floors
<ul style="list-style-type: none"> <li>• High configurability and a range of capacity to suit your needs</li> <li>• Recessed activation that is seamless and unobtrusive</li> <li>• Easy for customers to operate</li> <li>• Lowest profile extends just up to 3/16" above the floor and is ADA compliant</li> </ul>					



### EVOLUTION™ SERIES FLOOR BOXES

CONFIGURABILITY ●●●●●	DURABILITY ●●●●○	AESTHETIC DESIGN ●●●●○	USER-FRIENDLY ●●●○	LOW PROFILE ●●●●●	New concrete floors
<ul style="list-style-type: none"> <li>• High configurability and a range of capacity to suit your needs</li> <li>• Recessed activation that is seamless and unobtrusive</li> <li>• Easy for customers to operate</li> <li>• Lowest profile extends just up to 3/16" above the floor and is ADA compliant</li> </ul>					

## CHOOSE THE RIGHT FLOOR BOX OR POKE-THRU DEVICE

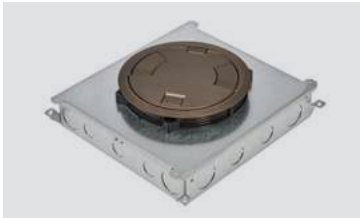


### RFBE DURABLE SERIES FLOOR BOXES



New concrete floors

- High configurability and a range of capacity to suit your needs
- Recessed activation that is seamless and unobtrusive
- Long-lasting, high-end finishes in brushed aluminum, plated brass and plated nickel
- Easy for customers to operate
- Lowest profile extends just up to 3/16" above the floor and is ADA compliant

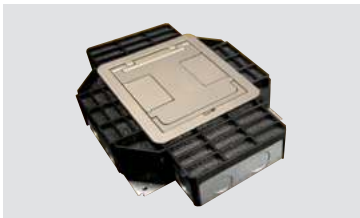


### RFBE SERIES FLOOR BOXES



New concrete floors

- High configurability and a range of capacity to suit your needs
- Recessed activation that is seamless and unobtrusive
- Easy for customers to operate
- Lowest profile extends just up to 3/16" above the floor and is ADA compliant



### RESOURCE RFB™ SERIES FLOOR BOXES



New concrete floors

- High configurability and a range of capacity to suit your needs
- Recessed activation that is seamless and unobtrusive
- Long-lasting, high-end finish in brushed aluminum
- Easy for customers to operate
- Lowest profile extends just up to 3/16" above the floor and is ADA compliant



### CRFB™ SERIES RAISED FLOOR BOXES



New raised floors

- High configurability and a range of capacity to suit your needs
- Recessed activation that is seamless and unobtrusive
- Easy for customers to operate
- Lowest profile extends just up to 3/16" above the floor and is ADA compliant

## CONFIGURABLE WORKSPACES

### WHAT IS A CONFIGURABLE WORKSPACE?

- Can be easily reconfigured and rearranged
- Design, furniture and layout that changes frequently
- Lots of end users that need many connections



Training Rooms



Classrooms



Other Flexible Spaces

## WHAT DOES AN IDEAL SOLUTION LOOK LIKE?



### SAY YES TO THESE FEATURES

- Durable and built to last
- Intuitive and easy to use
- Designed with enough capacity to handle multiple connections



### AVOID

- Limited color options
- Large or bulky styles
- Monument style products
- Hard or confusing to use
- Easily scratched or damaged

## CHOOSE THE RIGHT POKE-THRU DEVICE OR FLOOR BOX

### UNDERSTANDING THE RATINGS

- ○ ○ ○ ○ = Poor
- ● ○ ○ ○ = Fair
- ● ● ○ ○ = Acceptable
- ● ● ● ○ = Excellent
- ● ● ● ● = Best-in-class for this application

### UNDERSTANDING THE CATEGORIES

- DURABILITY**  
Withstands wear, pressure and damage
- USER-FRIENDLY**  
Easy to operate
- LOW PROFILE**  
Close to the floor
- AESTHETIC DESIGN**  
Blends in to any space
- CONFIGURABILITY**  
Adapts to your needs



### EVOLUTION™ DURABLE SERIES POKE-THRU DEVICES

- |            |               |             |                  |                 |                                  |
|------------|---------------|-------------|------------------|-----------------|----------------------------------|
| DURABILITY | USER-FRIENDLY | LOW PROFILE | AESTHETIC DESIGN | CONFIGURABILITY | New and retrofit concrete floors |
| ●●●●●      | ●●●○○         | ●●●●●       | ●●●●○            | ●●●●●           |                                  |

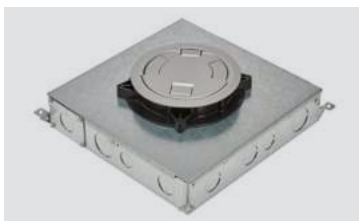
- Long-lasting, high-end finishes in brushed aluminum, plated brass and plated nickel
- Easy to use
- Lowest profile extends just up to 3/16" above the floor



### RC™ SERIES SURFACE STYLE POKE-THRU DEVICES

- |            |               |             |                  |                 |                                  |
|------------|---------------|-------------|------------------|-----------------|----------------------------------|
| DURABILITY | USER-FRIENDLY | LOW PROFILE | AESTHETIC DESIGN | CONFIGURABILITY | New and retrofit concrete floors |
| ●●●○○      | ●●●●●         | ●●●○○       | ●●●○○            | ●●●○○           |                                  |

- Cover automatically closes for a clean look that stays protected
- Easy to recognize and intuitive to use
- Low profile extends only 3/8" to 3/4" above the floor
- Available in black, brass, aluminum and gray

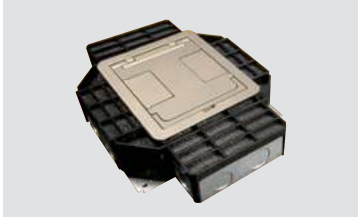


### RFBE DURABLE SERIES FLOOR BOXES

- |            |               |             |                  |                 |                     |
|------------|---------------|-------------|------------------|-----------------|---------------------|
| DURABILITY | USER-FRIENDLY | LOW PROFILE | AESTHETIC DESIGN | CONFIGURABILITY | New concrete floors |
| ●●●●●      | ●●●○○         | ●●●●●       | ●●●●○            | ●●●●○           |                     |

- Long-lasting, high-end finishes in brushed aluminum, plated brass and plated nickel
- Easy to use
- Lowest profile extends just up to 3/16" above the floor

## CHOOSE THE RIGHT FLOOR BOX OR POKE-THRU DEVICE

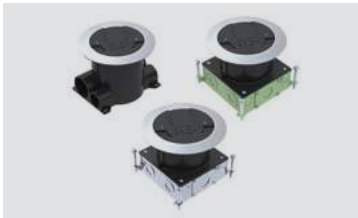


### RESOURCE RFB™ SERIES FLOOR BOXES



New concrete floors

- Long-lasting, high-end finish in brushed aluminum
- Carpet inlay area seamlessly blends into its environment
- Lowest profile extends just up to 3/16" above the floor



### RATCHET-PRO™ SERIES FLOOR BOXES



New concrete floors

- Cover automatically closes for a clean look that stays protected
- Easy to recognize and intuitive to use
- Low profile extends only 3/8" to 3/4" above the floor
- Available in black, brass, aluminum and gray



### 881™ SERIES FLOOR BOXES



New concrete floors

- Available in brushed aluminum and solid brass
- Easy to recognize
- Lowest profile extends just up to 3/16" above the floor



### OMNIBOX™ SERIES FLOOR BOXES



New concrete or wood floors

- Available in brushed aluminum and solid brass
- Lowest profile extends just up to 3/16" above the floor
- Minimal design doesn't take up much space



### MODULINK™ 880MP SERIES FLOOR BOXES



New concrete floors

- Available in brushed aluminum and solid brass
- Lowest profile extends just up to 3/16" above the floor
- Minimal design doesn't take up much space



### 861™ SERIES FLOOR BOXES



Wood floors

- Cover automatically closes for a clean look that stays protected
- Easy to recognize and intuitive to use
- Low profile extends only 3/8" to 3/4" above the floor
- Available in black, brass, aluminum and gray

## CONFIGURABLE WORKSPACES

### WHAT IS A CONFIGURABLE WORKSPACE?

- Can be easily reconfigured and rearranged
- Design, furniture and layout that changes frequently
- Lots of end users that need many connections



Training Rooms



Classrooms



Other Flexible Spaces

### WHAT DOES AN IDEAL SOLUTION LOOK LIKE?



#### SAY YES TO THESE FEATURES

- Durable and built to last
- Maintains the ADA compliance of the workspace
- Recessed for prewired furniture, and flush for unwired furniture
- Device configurability
- Multiple finishes



#### AVOID

- Monument style products
- Products that don't have the proper load ratings
- Products that cannot be modified in the future
- Hard to access covers and flip lids with non-powered furniture

## CHOOSE THE RIGHT POKE-THRU DEVICE OR FLOOR BOX

### UNDERSTANDING THE RATINGS

- ○ ○ ○ ○ = Poor
- ● ○ ○ ○ = Fair
- ● ● ○ ○ = Acceptable
- ● ● ● ○ = Excellent
- ● ● ● ● = Best-in-class for this application

### UNDERSTANDING THE CATEGORIES

- DURABILITY**  
Withstands wear, pressure and damage
- USER-FRIENDLY**  
Easy to operate
- LOW PROFILE**  
Close to the floor
- AESTHETIC DESIGN**  
Blends in to any space
- CONFIGURABILITY**  
Adapts to your needs



#### EVOLUTION™ DURABLE SERIES POKE-THRU DEVICES

- DURABILITY** ● ● ● ● ●
- LOW PROFILE** ● ● ● ● ●
- USER-FRIENDLY** ● ● ● ● ○
- CONFIGURABILITY** ● ● ● ● ●
- AESTHETIC DESIGN** ● ● ● ● ○
- New concrete floors

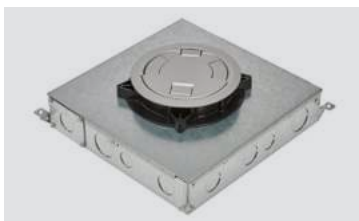
- Long-lasting, high-end finishes in brushed aluminum, plated brass and plated nickel
- Lowest profile extends just up to 3/16" above the floor and is ADA compliant
- Protected connections and plugs for prewired furniture
- High configurability and a range of capacity to suit your needs



#### RC™ SERIES SURFACE STYLE POKE-THRU DEVICES

- DURABILITY** ● ● ● ● ○
- LOW PROFILE** ● ● ● ● ○
- USER-FRIENDLY** ● ● ● ● ●
- CONFIGURABILITY** ● ● ● ● ○
- AESTHETIC DESIGN** ● ● ● ● ○
- New and retrofit concrete floors

- Cover automatically closes for a clean look that stays protected
- Low profile extends only 3/8" to 1/2" above the floor and is ADA compliant
- Easy to recognize and intuitive to use
- Multiple prewired configurations

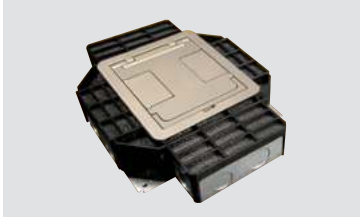


#### RFBE DURABLE SERIES FLOOR BOXES

- DURABILITY** ● ● ● ● ●
- LOW PROFILE** ● ● ● ● ●
- USER-FRIENDLY** ● ● ● ● ○
- CONFIGURABILITY** ● ● ● ● ○
- AESTHETIC DESIGN** ● ● ● ● ○
- New concrete floors

- Long-lasting, high-end finishes in brushed aluminum, plated brass and plated nickel
- Lowest profile extends just up to 3/16" above the floor and is ADA compliant
- Protected connections and plugs for prewired furniture
- High configurability and a range of capacity to suit your needs

## CHOOSE THE RIGHT FLOOR BOX OR POKE-THRU DEVICE

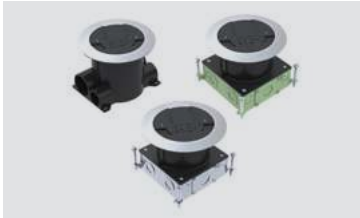


### RESOURCE RFB™ SERIES FLOOR BOXES



New concrete floors

- Long-lasting, high-end finish in brushed aluminum
- Lowest profile extends just up to 3/16" above the floor and is ADA compliant
- Protected connections and plugs for prewired furniture
- High configurability and a range of capacity to suit your needs



### RATCHET-PRO™ SERIES FLOOR BOXES



New concrete floors

- Cover automatically closes for a clean look that stays protected
- Low profile extends only 3/8" to 1/2" above the floor and is ADA compliant
- Easy to recognize and intuitive to use
- Multiple prewired configurations



### 881™ SERIES FLOOR BOXES



New concrete floors

- More durable covers with solid aluminum and solid brass
- Lowest profile extends just up to 3/16" above the floor and is ADA compliant
- Easy to recognize
- High configurability



### OMNIBOX™ SERIES FLOOR BOXES



New concrete or wood floors

- More durable covers with solid aluminum and solid brass
- Lowest profile extends just up to 3/16" above the floor and is ADA compliant
- Easy to recognize
- High configurability and a range of capacity to suit your needs



### MODULINK™ 880MP SERIES FLOOR BOXES



New concrete floors

- More durable covers with solid aluminum and solid brass
- Lowest profile extends just up to 3/16" above the floor and is ADA compliant
- Easy to recognize
- High configurability and a range of capacity to suit your needs



### 861™ SERIES FLOOR BOXES



Wood floors

- Cover automatically closes for a clean look that stays protected
- Low profile extends only 3/8" to 1/2" above the floor and is ADA compliant
- Easy to recognize and intuitive to use
- Multiple prewired configurations

## OPEN AREAS WITH HEAVY EQUIPMENT TRAFFIC

### WHAT IS AN OPEN SPACE WITH EQUIPMENT THAT IS FREQUENTLY MOVING?

- A space designed for changing events or as a pathway to another space, like a hallway
- Many people are walking around in the space but not necessarily using the connections
- End users are typically staff or workers that need connections for equipment
- Equipment is constantly changing



Ballrooms



Malls



Airport Terminals

## WHAT DOES AN IDEAL SOLUTION LOOK LIKE?



### SAY YES TO THESE FEATURES

- Durable enough to withstand heavy equipment
- Tested to handle frequent cleaning and exposure to soaps, detergents and other cleaning agents
- Aesthetically-pleasing and design-friendly



### AVOID

- No load rating (or the wrong one)
- Easily scratched or damaged
- Monument style products

## CHOOSE THE RIGHT POKE-THRU DEVICE OR FLOOR BOX

### UNDERSTANDING THE RATINGS

- ○ ○ ○ ○ = Poor
- ● ○ ○ ○ = Fair
- ● ● ○ ○ = Acceptable
- ● ● ● ○ = Excellent
- ● ● ● ● = Best-in-class for this application

### UNDERSTANDING THE CATEGORIES

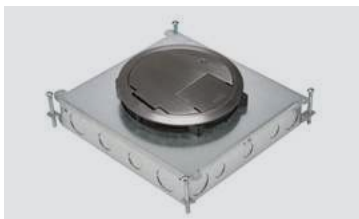
- DURABILITY**  
Withstands wear, pressure and damage
- USER-FRIENDLY**  
Easy to operate
- LOW PROFILE**  
Close to the floor
- AESTHETIC DESIGN**  
Blends in to any space
- CONFIGURABILITY**  
Adapts to your needs



### HEAVY-DUTY EVOLUTION™ POKE-THRU DEVICES

- DURABILITY** ● ● ● ● ●
- LOW PROFILE** ● ● ● ● ●
- AESTHETIC DESIGN** ● ● ● ● ○
- CONFIGURABILITY** ● ● ● ● ●
- USER-FRIENDLY** ● ● ● ○ ○
- New and retrofit concrete floors

- Extremely strong cover that can handle equipment like scissor lifts and maintenance carts
- Solid brass or solid stainless steel provides high corrosion resistance and resists scuffs and scratches
- Lowest profile extends just up to 3/16" above the floor



### RFBE HEAVY-DUTY SERIES FLOOR BOXES

- DURABILITY** ● ● ● ● ●
- LOW PROFILE** ● ● ● ● ●
- AESTHETIC DESIGN** ● ● ● ● ○
- CONFIGURABILITY** ● ● ● ● ○
- USER-FRIENDLY** ● ● ● ○ ○
- New concrete floors

- Extremely strong cover that can handle equipment like scissor lifts and maintenance carts
- Solid brass or solid stainless steel provides high corrosion resistance and resists scuffs and scratches
- Lowest profile extends just up to 3/16" above the floor



### CCBB™ SERIES BALLROOM FLOOR BOXES

- DURABILITY** ● ● ● ● ●
- LOW PROFILE** ● ● ● ● ●
- AESTHETIC DESIGN** ● ● ● ● ●
- CONFIGURABILITY** ● ● ● ● ●
- USER-FRIENDLY** ● ● ● ○ ○
- New concrete floors

- Extremely strong, cast aluminum cover with a very high load rating of 10,000 lbs.
- Large carpet inlay area seamlessly blends into its environment
- Installs flush to concrete, carpet or a floor covering to easily blend in

## OPEN AREAS WITH HEAVY EQUIPMENT TRAFFIC

### WHAT IS AN OPEN SPACE WITH EQUIPMENT THAT IS FREQUENTLY MOVING?

- A space designed for changing events or as a pathway to another space, like a hallway
- Many people are walking around in the space but not necessarily using the connections
- End users are typically staff or workers that need connections for equipment
- Equipment is constantly changing



Ballrooms



Malls



Airport Terminals

## WHAT DOES AN IDEAL SOLUTION LOOK LIKE?



### SAY YES TO THESE FEATURES

- Durable and built to last
- Maintains the ADA compliance of the workspace
- Designed with enough capacity to handle multiple connections
- Limited access so only facility workers can get in



### AVOID

- Monument style products
- Products that don't have the proper load ratings
- Products that cannot be modified in the future
- Covers that are easily accessible to the public

## CHOOSE THE RIGHT POKE-THRU DEVICE OR FLOOR BOX

### UNDERSTANDING THE RATINGS

- ○ ○ ○ ○ = Poor
- ● ○ ○ ○ = Fair
- ● ● ○ ○ = Acceptable
- ● ● ● ○ = Excellent
- ● ● ● ● = Best-in-class for this application

### UNDERSTANDING THE CATEGORIES

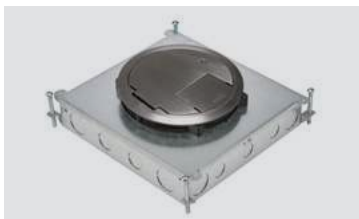
- DURABILITY**  
Withstands wear, pressure and damage
- USER-FRIENDLY**  
Easy to operate
- LOW PROFILE**  
Close to the floor
- AESTHETIC DESIGN**  
Blends in to any space
- CONFIGURABILITY**  
Adapts to your needs



### HEAVY-DUTY EVOLUTION™ POKE-THRU DEVICES

- DURABILITY** ● ● ● ● ●
- LOW PROFILE** ● ● ● ● ●
- CONFIGURABILITY** ● ● ● ● ●
- USER-FRIENDLY** ● ● ● ● ○
- AESTHETIC DESIGN** ● ● ● ● ○
- New and retrofit concrete floors

- Extremely strong cover that can handle equipment like scissor lifts and maintenance carts
- Solid brass or solid stainless steel provides high corrosion resistance and resists scuffs and scratches
- Lowest profile extends just up to 3/16" above the floor and is ADA compliant
- High configurability and a range of capacity to suit your needs



### RFBE HEAVY-DUTY SERIES FLOOR BOXES

- DURABILITY** ● ● ● ● ●
- LOW PROFILE** ● ● ● ● ●
- CONFIGURABILITY** ● ● ● ● ○
- USER-FRIENDLY** ● ● ● ● ○
- AESTHETIC DESIGN** ● ● ● ● ○
- New concrete floors

- Extremely strong cover that can handle equipment like scissor lifts and maintenance carts
- Solid brass or solid stainless steel provides high corrosion resistance and resists scuffs and scratches
- Lowest profile extends just up to 3/16" above the floor and is ADA compliant
- High configurability and a range of capacity to suit your needs



### CCBB™ SERIES BALLROOM FLOOR BOXES

- DURABILITY** ● ● ● ● ●
- LOW PROFILE** ● ● ● ● ●
- CONFIGURABILITY** ● ● ● ● ●
- USER-FRIENDLY** ● ● ○ ○ ○
- AESTHETIC DESIGN** ● ● ● ● ●
- New concrete floors

- Extremely strong, cast aluminum cover with a very high load rating of 10,000 lbs.
- Installs flush to concrete, carpet or a floor covering to easily blend in
- High configurability and a range of capacity to suit your needs
- Large carpet inlay area seamlessly blends into its environment

## SHARED WORKSPACES

### WHAT IS A SHARED WORKSPACE?

- Lots of end users that need many connections but aren't familiar with the space
- Office spaces with an open floor plan and permanent desks, tables and other workstations
- Design, furniture and layout that doesn't change often



Huddle Spaces



Co-Working Spaces

## WHAT DOES AN IDEAL SOLUTION LOOK LIKE?



### SAY YES TO THESE FEATURES

- Intuitive and easy to use
- Easy to access
- Durable and built to last



### AVOID

- Hard or confusing to use
- Hidden or difficult to access

## CHOOSE THE RIGHT POKE-THRU DEVICE OR FLOOR BOX

### UNDERSTANDING THE RATINGS

- ○ ○ ○ ○ = Poor
- ● ○ ○ ○ = Fair
- ● ● ○ ○ = Acceptable
- ● ● ● ○ = Excellent
- ● ● ● ● = Best-in-class for this application

### UNDERSTANDING THE CATEGORIES

- DURABILITY**  
Withstands wear, pressure and damage
- USER-FRIENDLY**  
Easy to operate
- LOW PROFILE**  
Close to the floor
- AESTHETIC DESIGN**  
Blends in to any space
- CONFIGURABILITY**  
Adapts to your needs



### RC™ SERIES SURFACE STYLE POKE-THRU DEVICES

- USER-FRIENDLY** ● ● ● ● ●
  - AESTHETIC DESIGN** ● ● ● ● ○
  - CONFIGURABILITY** ● ● ● ● ○
  - DURABILITY** ● ● ● ● ○
  - LOW PROFILE** ● ● ● ● ○
- New and retrofit concrete floors

- Cover automatically closes for a clean look that stays protected
- Easy to recognize and intuitive to use
- Low profile extends only 3/8" to 3/4" above the floor and is ADA compliant
- Available in black, brass, aluminum and gray



### RATCHET-PRO™ SERIES FLOOR BOXES

- USER-FRIENDLY** ● ● ● ● ●
  - AESTHETIC DESIGN** ● ● ● ● ○
  - CONFIGURABILITY** ● ● ● ● ○
  - DURABILITY** ● ● ● ● ○
  - LOW PROFILE** ● ● ● ● ○
- New concrete floors

- Cover automatically closes for a clean look that stays protected
- Easy to recognize and intuitive to use
- Low profile extends only 3/8" to 3/4" above the floor and is ADA compliant
- Available in black, brass, aluminum and gray



### OMNIBOX™ SERIES FLOOR BOXES

- USER-FRIENDLY** ● ● ○ ○ ○
  - AESTHETIC DESIGN** ● ● ● ● ○
  - CONFIGURABILITY** ● ● ● ● ○
  - DURABILITY** ● ● ● ● ○
  - LOW PROFILE** ● ● ● ● ●
- New concrete or wood floors

- Minimal design doesn't take up much space
- Lowest profile extends just up to 3/16" above the floor
- Available in brushed aluminum and solid brass

## CHOOSE THE RIGHT FLOOR BOX OR POKE-THRU DEVICE



### MODULINK™ 880MP SERIES FLOOR BOXES



New concrete floors

- Minimal design doesn't take up much space
- Lowest profile extends just up to 3/16" above the floor
- Available in brushed aluminum and solid brass



### 861™ SERIES FLOOR BOXES



Wood floors

- Cover automatically closes for a clean look that stays protected
- Easy to recognize and intuitive to use
- Low profile extends only 3/8" to 3/4" above the floor
- Available in black, brass, aluminum and gray

## SHARED WORKSPACES

### WHAT IS A SHARED WORKSPACE?

- Lots of end users that need many connections but aren't familiar with the space
- Office spaces with an open floor plan and permanent desks, tables and other workstations
- Design, furniture and layout that doesn't change often



Huddle Spaces



Co-Working Spaces

## WHAT DOES AN IDEAL SOLUTION LOOK LIKE?



### SAY YES TO THESE FEATURES

- Intuitive and easy to use
- Easy to access
- Designed with enough capacity to handle multiple connections/services
- Durable and built to last



### AVOID

- Not flexible for future connection changes
- Not enough connections for the amount of people working in the space
- Hard or confusing to use
- Hidden or difficult to access

## CHOOSE THE RIGHT POKE-THRU DEVICE OR FLOOR BOX

### UNDERSTANDING THE RATINGS

- ○ ○ ○ ○ = Poor
- ● ○ ○ ○ = Fair
- ● ● ○ ○ = Acceptable
- ● ● ● ○ = Excellent
- ● ● ● ● = Best-in-class for this application

### UNDERSTANDING THE CATEGORIES

- DURABILITY**  
Withstands wear, pressure and damage
- USER-FRIENDLY**  
Easy to operate
- LOW PROFILE**  
Close to the floor
- AESTHETIC DESIGN**  
Blends in to any space
- CONFIGURABILITY**  
Adapts to your needs



### RC™ SERIES SURFACE STYLE POKE-THRU DEVICES

- USER-FRIENDLY** ● ● ● ● ●
- CONFIGURABILITY** ● ● ● ● ○
- DURABILITY** ● ● ● ● ○
- AESTHETIC DESIGN** ● ● ● ● ○
- LOW PROFILE** ● ● ● ● ○
- New and retrofit concrete floors

- Easy to recognize and intuitive to use
- Cover automatically closes for a clean look that stays protected
- Multiple prewired configurations
- Low profile extends only 3/8" to 1/2" above the floor and is ADA compliant



### RATCHET-PRO™ SERIES FLOOR BOXES

- USER-FRIENDLY** ● ● ● ● ●
- CONFIGURABILITY** ● ● ● ● ○
- DURABILITY** ● ● ● ● ○
- AESTHETIC DESIGN** ● ● ● ● ○
- LOW PROFILE** ● ● ● ● ○
- New concrete floors

- Easy to recognize and intuitive to use
- Cover automatically closes for a clean look that stays protected
- Multiple prewired configurations
- Low profile extends only 3/8" to 1/2" above the floor and is ADA compliant

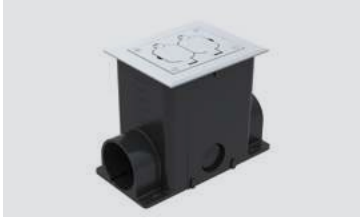


### OMNIBOX™ SERIES FLOOR BOXES

- USER-FRIENDLY** ● ● ○ ○ ○
- CONFIGURABILITY** ● ● ● ● ○
- DURABILITY** ● ● ● ● ○
- AESTHETIC DESIGN** ● ● ● ● ○
- LOW PROFILE** ● ● ● ● ●
- New concrete or wood floors

- Easy to recognize
- High configurability
- More durable covers with solid aluminum and solid brass
- Lowest profile extends just up to 3/16" above the floor and is ADA compliant

## CHOOSE THE RIGHT FLOOR BOX OR POKE-THRU DEVICE



### MODULINK™ 880MP SERIES FLOOR BOXES



New concrete floors

- Easy to recognize
- High configurability
- More durable covers with solid aluminum and solid brass
- Lowest profile extends just up to 3/16" above the floor and is ADA compliant



### 861™ SERIES FLOOR BOXES



Wood floors

- Easy to recognize and intuitive to use
- Cover automatically closes for a clean look that stays protected
- Multiple prewired configurations
- Low profile extends only 3/8" to 1/2" above the floor and is ADA compliant