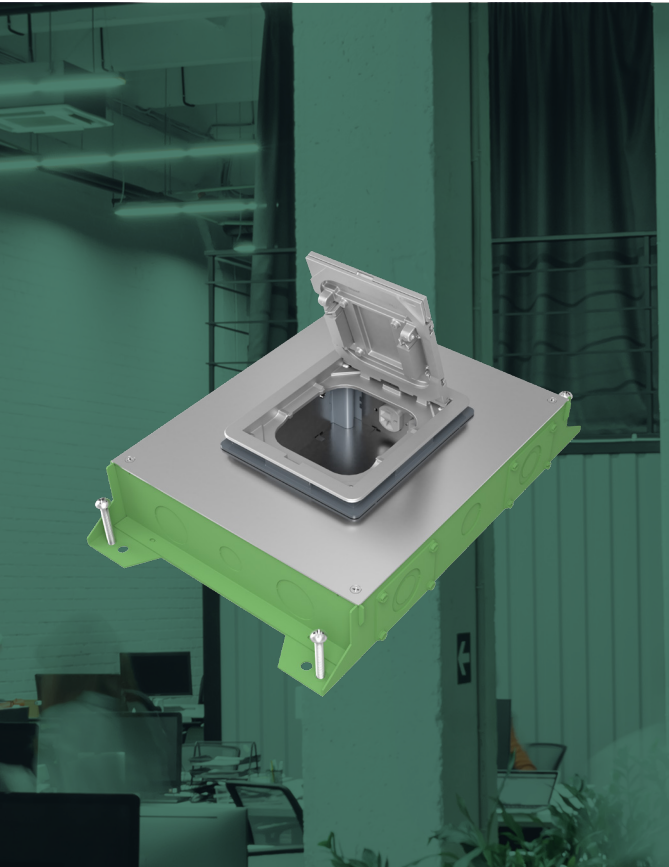
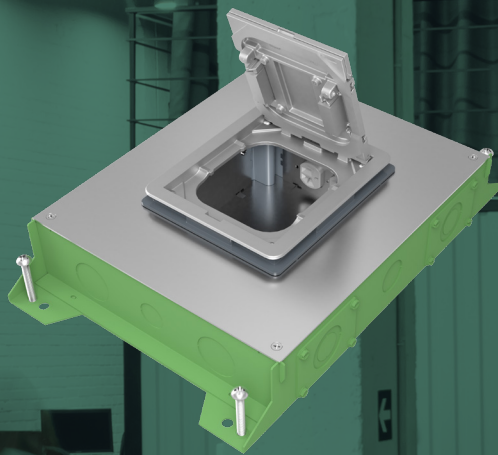




**WIREMOLD®**  
RFBA™ Series  
Floor Boxes



**HIT REFRESH**  
ON YOUR NEXT FLOOR BOX INSTALLATION

#LegrandImprovingLives





## Your Versatile, Go-To Floor Box

RFBA Series Floor Boxes are designed for maximum efficiency throughout an entire building, bringing versatile recessed activations for power and data services to open space areas or directly to workstations. No matter what size you choose, components and accessories work across the entire line interchangeably. Simply mix-and-match as needed for your project. Improved wire and cable routing makes wire pulling much easier in adjacent compartments and around corners. Available in 2-, 4-, 6- and 10-gang models with a variety of covers, colors and profiles.



### PERFECT FOR MANY APPLICATIONS

Schools | Financial institutions | MDUs | Commercial offices | Hospitality spaces

### INSTALLS IN MANY FLOOR TYPES

Tile | Stone | Carpet | Polished Concrete | Terrazzo | Wood

### INNOVATIVE DESIGN

- Eight device plates consolidate SKUs
- Device plates install with just one screw
- Components and accessories work with all sizes
- Removable plastic insert simplifies installation
- Smooth wire pulling inside of each box
- 2" conduit feed on standard boxes meets all requirements

### FEATURES & BENEFITS

#### One consistent design.

Mix-and-match RFBA Series Floor Boxes of any size with interchangeable, shared components and accessories. Makes every project installation quick and efficient.

#### Improved wire and cable routing.

Allows for easier wire pulling in adjacent compartments and around corners, reducing the overall cost for most cabling requirements.

#### Universal-sized conduit feed meets all requirements for each box.

2- and 4-gang shallow boxes accept a 1" conduit feed, while all standard boxes accept a 2" conduit feed.

#### Wide range of capacity options.

Choose from 2-, 4-, 6- and 10-gang sizes to fit any space.

#### Two cover options.

Covers include both round and rectangular versions with egress capacity that's sufficient for the number of gangs.

#### Two finishes.

Every box configuration is available in either a standard zinc-plated construction or a lightweight "slab-on-grade" finish with fusion-bonded epoxy corrosion-resistant paint.

#### Buy America Compliant Versions Available.

Some styles of the RFBA Floor Box also come in a Buy America compliant version.

#### Removable dividers post-pour.

Fully adjustable before and after the concrete pour.

#### Adapts to most power and communications needs.

Common mounting plates can be used for any of the RFBA Series Floor Boxes. Reduces overall life cycle cost.

#### Every floor type.

Installs in tile, stone, carpet and wood. When used with the Concrete/Terrazzo Trim Ring, the floor boxes can also be installed in polished concrete or terrazzo.

#### FloorPort Activation Covers.

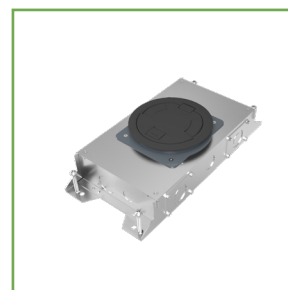
Provides TopGuard protection from water, dirt and debris.

#### Datacom connectivity options.

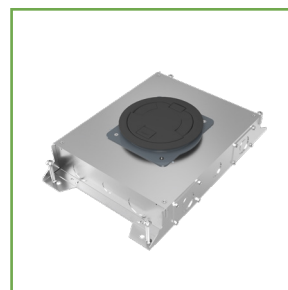
Accepts industry standard and proprietary devices from a wide range of manufacturers for a seamless interface. A wide selection of data and bezel options are available for use with Ortronics® TracJack™ and Series II devices. Also supports A/V connections.

#### Height adjustable.

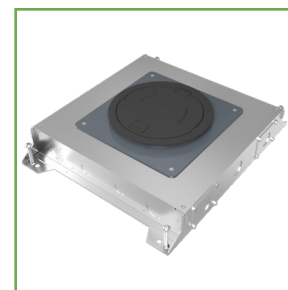
Using the 4" extension ring, adjust the height as needed to be flush with the floor.



2-GANG



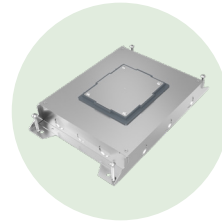
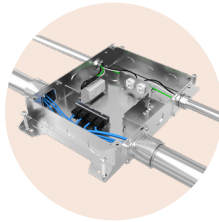
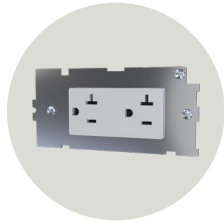
4-GANG



6-GANG



10-GANG



[legrand.us](mailto:legrand.us)



[youtube.com/legrand](https://youtube.com/legrand)



[linkedin.com/company/legrand-north-america](https://linkedin.com/company/legrand-north-america)



[x.com/Legrand](https://x.com/Legrand)



**Electrical Wiring Systems**  
60 Woodlawn Street  
West Hartford, CT 06110  
1.877.BY.LEGRAND (295.3472)  
[www.legrand.us](http://www.legrand.us)

Canada  
1.800.723.5175; 905.738.9195  
[www.legrand.ca](http://www.legrand.ca)